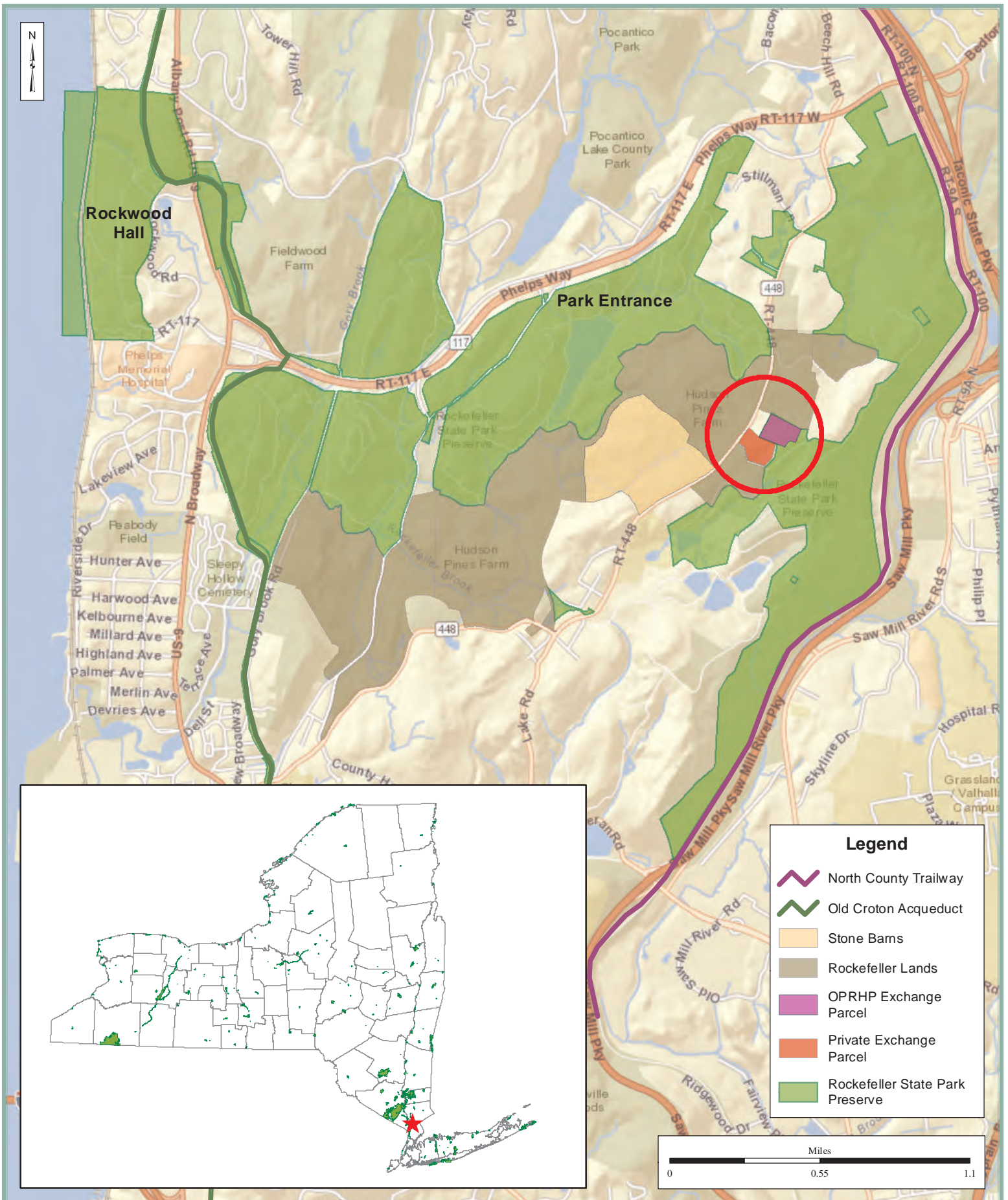


**Figure 1. Vicinity  
Rockefeller State Park Preserve Land Exchange**  
Town of Mount Pleasant, Westchester County

Map produced by NYSOPRHP GIS Bureau, August 06, 2015.



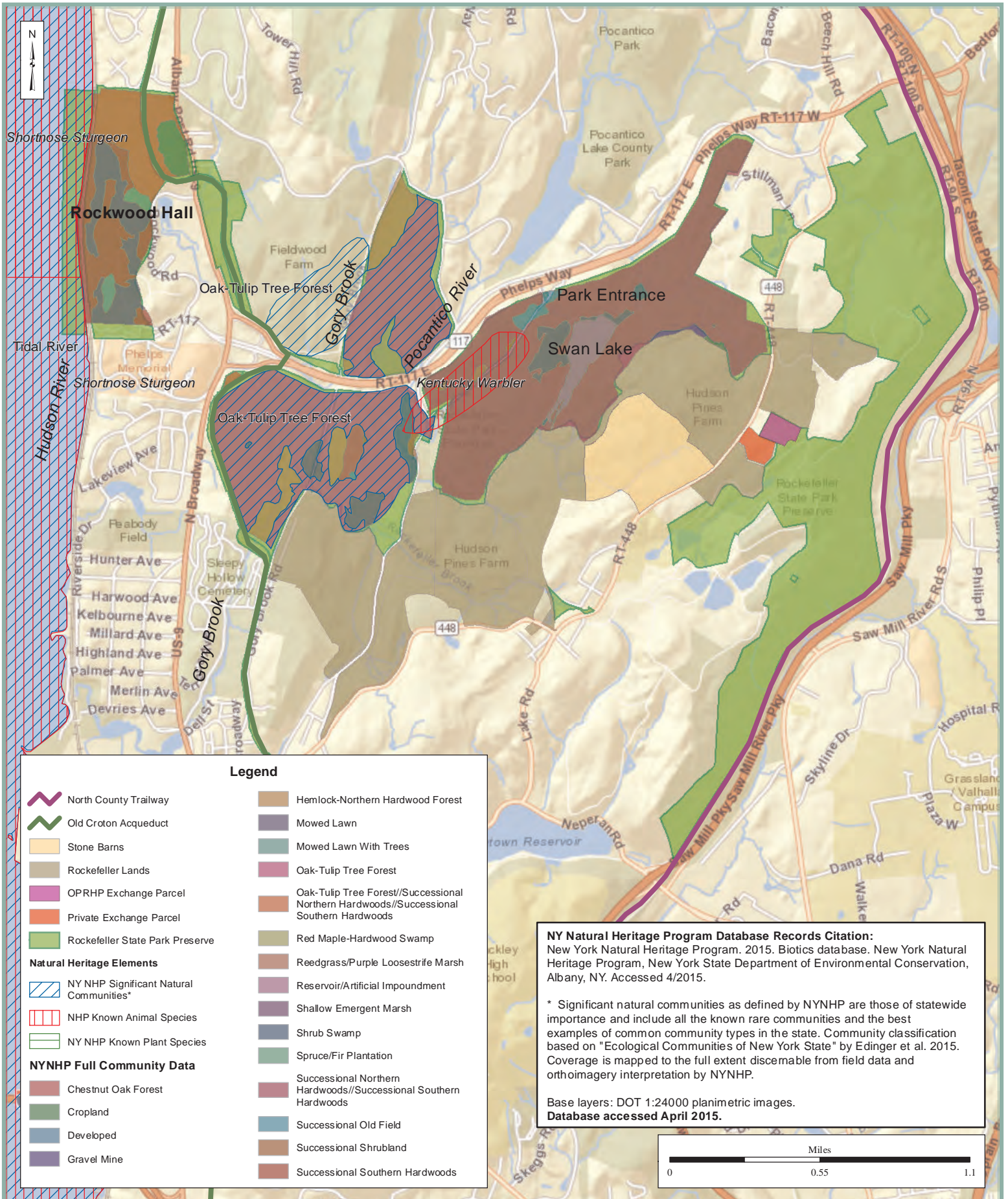


**Fig 2. Location  
Rockefeller State Park Preserve Land Exchange**

Town of Mount Pleasant, Westchester County  
Map produced by NYSOPRHP GIS Bureau, August 06, 2015.







**Figure 5. Significant and Ecological Communities  
 Rockefeller State Park Preserve Land Exchange**

Town of Mount Pleasant, Westchester County  
 Map produced by NYSOPRHP GIS Bureau, August 06, 2015.



**Parks, Recreation  
 and Historic  
 Preservation**

# Rockefeller State Park Preserve

125 Phelps Way, Pleasantville, NY 105705

Preserve Office: (914) 631-1470  
 Taconic Regional Office: (845) 889-4100  
 State Park Police: (845) 889-8866  
 In Case of Emergency: call 911  
 Website: <http://nysparks.com/parks/59/details.aspx>  
 Blog: <http://rsvpvolunteers.com>

**Please note:**  
 Rockefeller Family Trails (RF)  
 are carriage roads on private family  
 lands that are open to the public.  
 Please respect the  
 posted rules and regulations.

## Support the Preserve!



The Natural Heritage Trust (NHT) receives and administers gifts to the Preserve which are used for exhibits, science and land stewardship. To donate to the Preserve via NHT, contact the Preserve Office.



## Friends of the Rockefeller State Park Preserve

whose mission is to help restore and maintain the Preserve's unique system of carriage roads and pastoral landscapes. To donate to the Friends, go to [friendsrock.org](http://friendsrock.org)

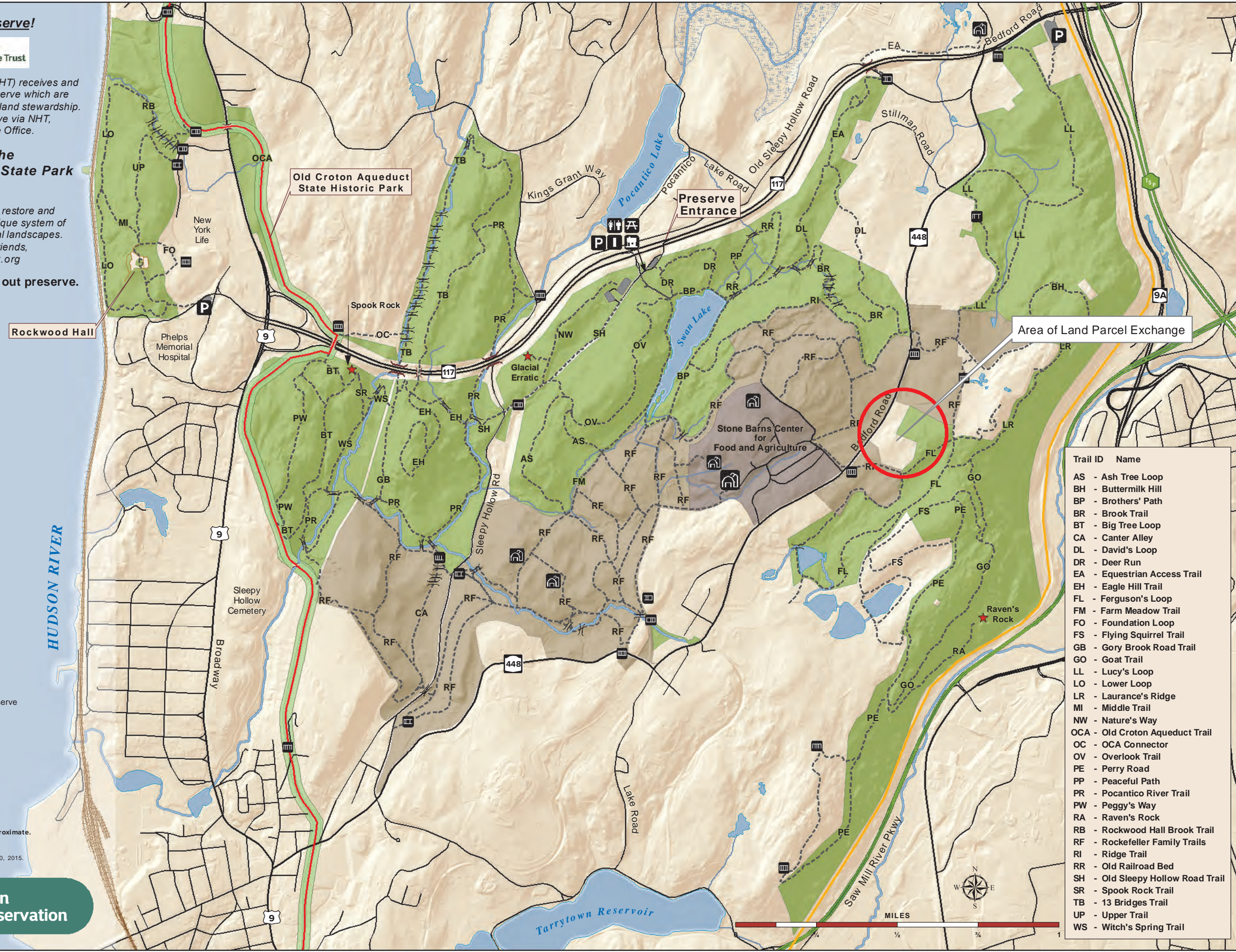
This is a carry in - carry out preserve.

### Legend

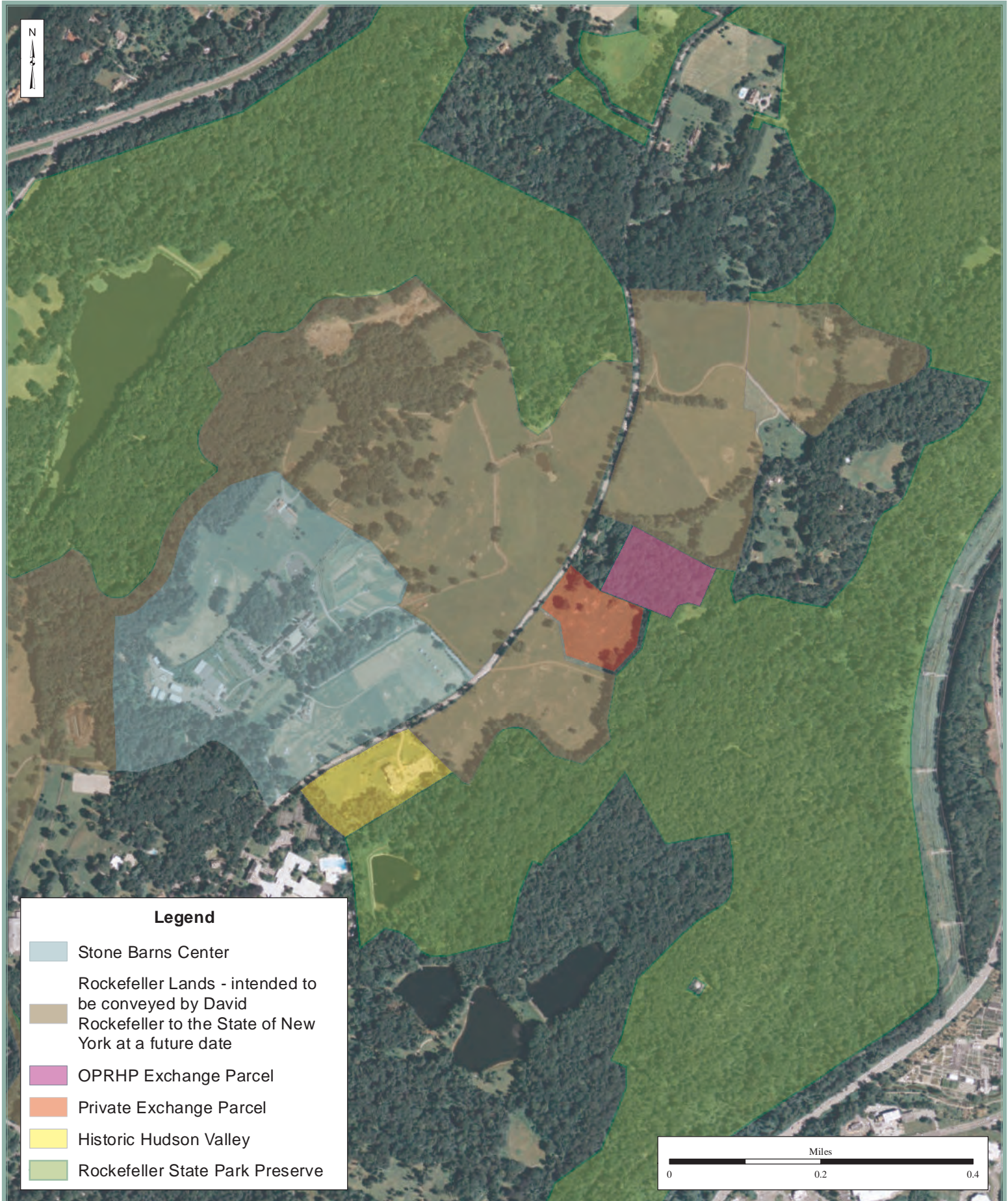
- Barn/Farm
- Bridge
- Gate
- Preserve Office
- Parking Lot
- Picnic Site
- Comfort Station
- Visitor Center
- Rock Formation
- Trail
- Paved Road
- Old Croton Aqueduct Trail
- North County Trail
- Active Railroad
- Roads
- State Parkway
- Highway
- Stream
- Rockefeller State Park Preserve
- Other Park Land
- Rockefeller Lands
- Stone Barns Center
- Wetlands

Please be considerate of other park users.  
 Please report any accident or incident immediately to park police.  
 All boundaries and trails are shown as approximate.  
 Be aware of changing trail conditions.

Map produced by NYSOPRHP GIS Bureau, August 20, 2015.



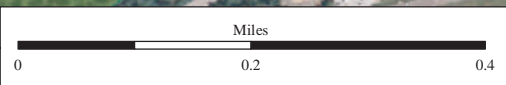
Trail ID	Name
AS	Ash Tree Loop
BH	Buttermilk Hill
BP	Brothers' Path
BR	Brook Trail
BT	Big Tree Loop
CA	Canter Alley
DL	David's Loop
DR	Deer Run
EA	Equestrian Access Trail
EH	Eagle Hill Trail
FL	Ferguson's Loop
FM	Farm Meadow Trail
FO	Foundation Loop
FS	Flying Squirrel Trail
GB	Gory Brook Road Trail
GO	Goat Trail
LL	Lucy's Loop
LO	Lower Loop
LR	Laurance's Ridge
MI	Middle Trail
NW	Nature's Way
OCA	Old Croton Aqueduct Trail
OC	OCA Connector
OV	Overlook Trail
PE	Perry Road
PP	Peaceful Path
PR	Pocantico River Trail
PW	Peggy's Way
RA	Raven's Rock
RB	Rockwood Hall Brook Trail
RF	Rockefeller Family Trails
RI	Ridge Trail
RR	Old Railroad Bed
SH	Old Sleepy Hollow Road Trail
SR	Spook Rock Trail
TB	13 Bridges Trail
UP	Upper Trail
WS	Witch's Spring Trail

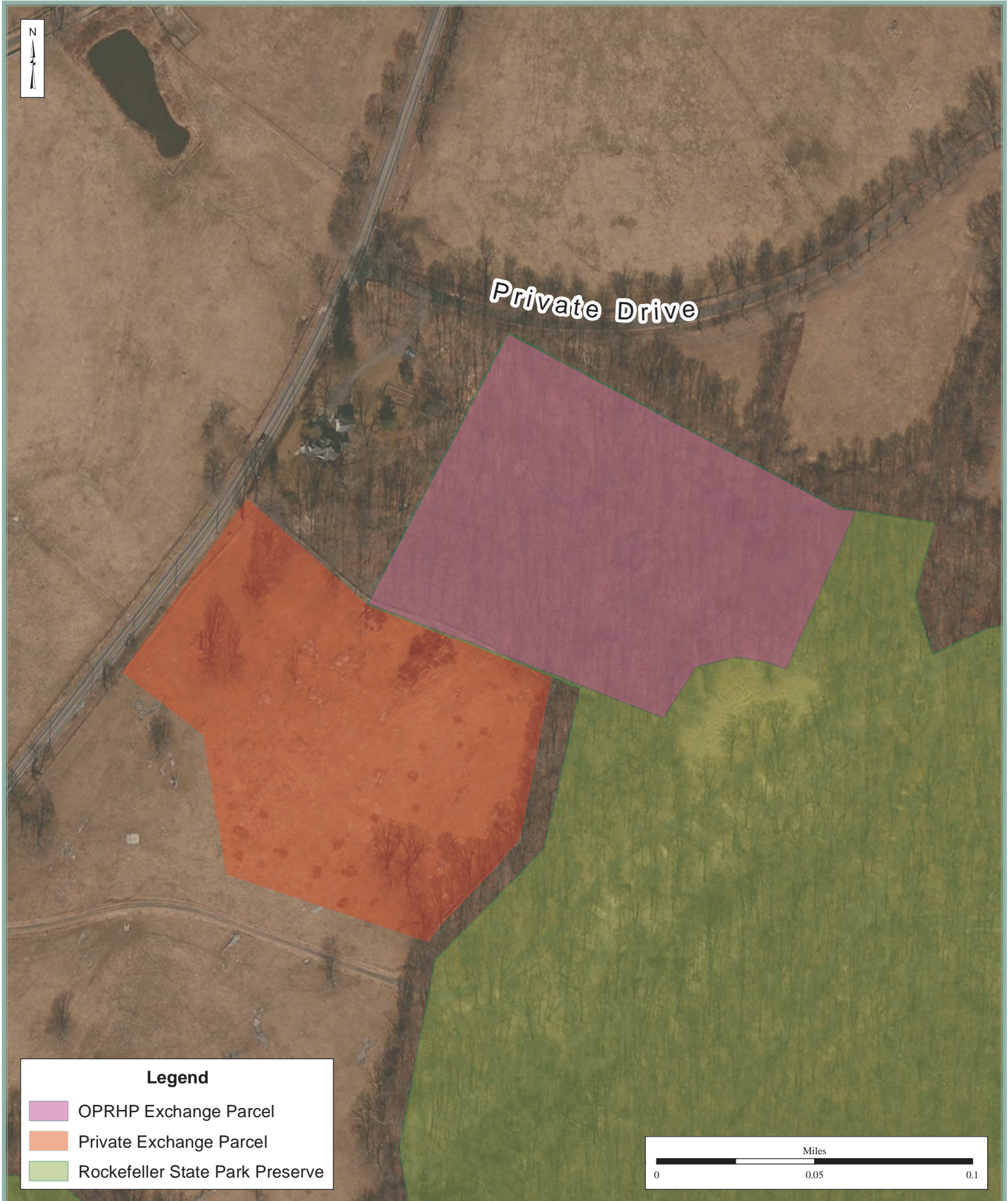


**Legend**

- Stone Barns Center
- Rockefeller Lands - intended to be conveyed by David Rockefeller to the State of New York at a future date
- OPRHP Exchange Parcel
- Private Exchange Parcel
- Historic Hudson Valley
- Rockefeller State Park Preserve

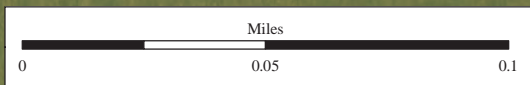
**Figure 7. Lands Exchanged  
Rockefeller State Park Preserve Land Exchange**  
Town of Mount Pleasant, Westchester County  
Map produced by NYSOPRHP GIS Bureau, April 01, 2016.





**Legend**

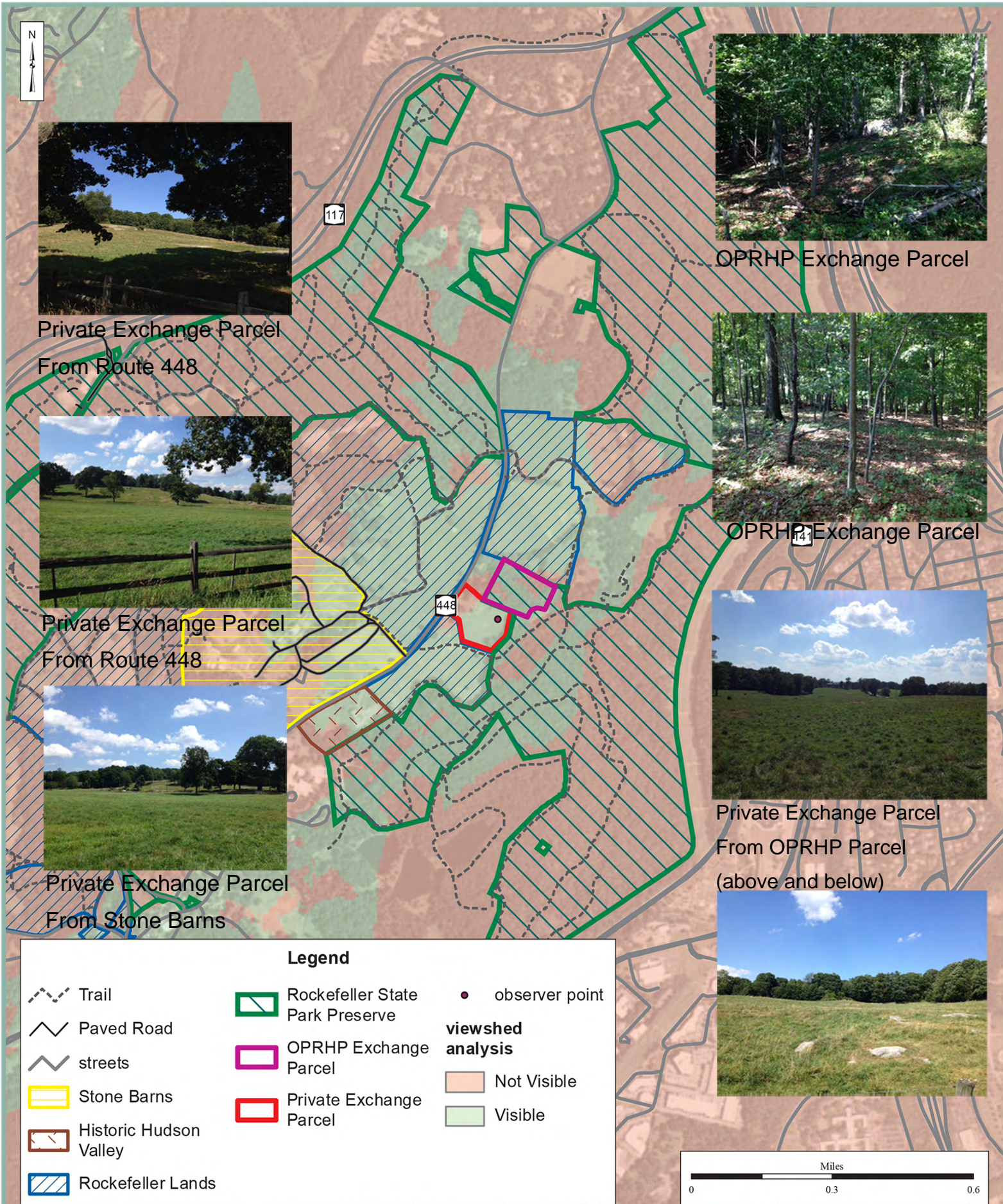
- OPRHP Exchange Parcel
- Private Exchange Parcel
- Rockefeller State Park Preserve



**Figure 8. Close-Up of Lands for Exchange  
Rockefeller State Park Preserve Land Exchange**

Town of Mount Pleasant, Westchester County  
Map produced by NYSOPRHP GIS Bureau, November 13, 2015.





**Figure 9. Viewshed Analysis**  
**Rockefeller State Park Preserve Land Exchange**  
 Town of Mount Pleasant, Westchester County

Map produced by NYSOPRHP GIS Bureau, March 18, 2016.



**Parks, Recreation  
and Historic  
Preservation**