

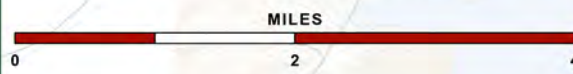
Legend

	Contact Station		ASP Legislative Boundary
	Gate		Allegheny State Park
	Park Office		Conservation Easement
	Hiking		Inholding
	Hiking/Equestrian		Seneca Indian Nation
	Hiking/Biking		Allegheny National Forest
	Unmarked Trails		City/Town
	Unpaved Roads		Water
	Powerlines		
	State Line		
	Streams		

- Equestrian Trails**
- 1 - Carrollton Section
 - 2 - Ridge Run Section
 - 3 - Irish Brook Section
 - 4 - Limestone Run Section
 - 5 - Phelps Section
 - 6 - Rice Brook Section - Yellow
 - 11 - Power line between Camps 10 and 12
 - 12 - Gase Lease Roads - Yellow
 - 13 - France Brook Road
 - 14 - Bay State Rd
 - 15 - Stoney Brook Road
 - 16 - Bivouac Section - Yellow
 - 17 - Stony Ridge Section
 - 18 - Lonkto Section

- Biking Trails**
- BP - Bike Path
 - BPT - Bear Paw Trail
 - CH - Christian Hollow
 - LR - Leonard Run
 - PT - Patterson Trail
 - RR - Ridge Run
 - SR - Snovsnake Run
 - SW - Sweetwater

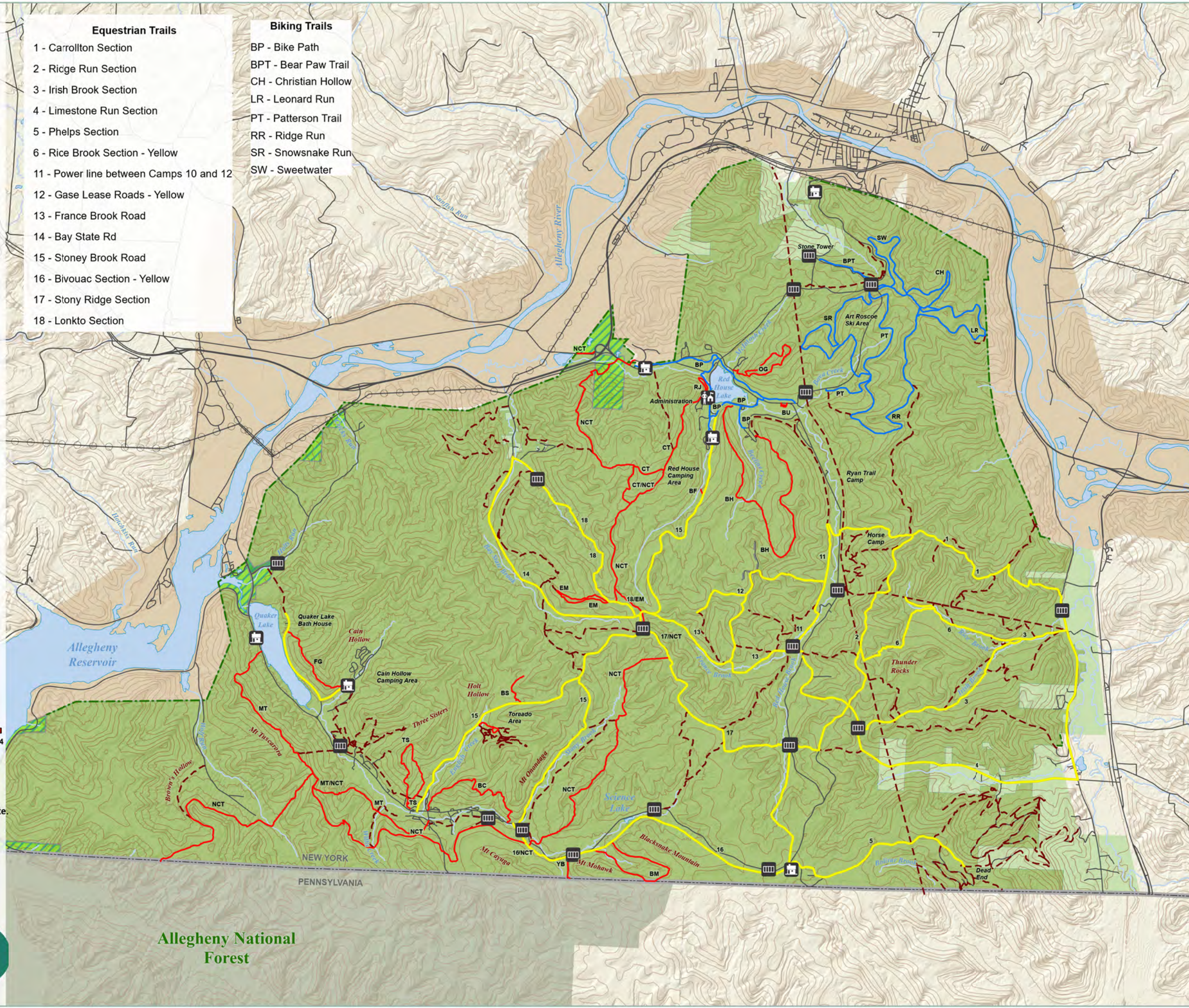
- Hiking Trails**
- BC - Bear Caves/Mt. Seneca - Blue/Red
 - BF - Bridal Falls
 - BH - Beehunter - Blue
 - BM - Black Snake Mountain
 - BS - Bear Springs
 - BU - Butterfly Area
 - CT - Conservation Trail - Blue
 - EM - Eastwood Meadows - Blue
 - FG - Flagg Trail - Blue
 - MT - Mt Tuscarora/Firetower - Blue
 - NCT - North Country Trail - White
 - OG - Osgood Trail
 - RJ - Red Jacket Trail
 - TS - Three Sisters - Blue
 - TR - Old Thunder Run Trail
 - YB - Yeager Brook Trail



Please be considerate of other park users. Please report any accident or incident immediately to park police. All boundaries and trails are shown as approximate. Be aware of changing trail conditions.

Red House Office: (716) 354-9121
 Quaker Office: (716) 354-2182
 Allegheny Regional Office: (716) 354-9101
 In Case of Emergency: 911

Map produced by NYSOPRHP GIS Bureau, July 05, 2023.



Allegheny National Forest