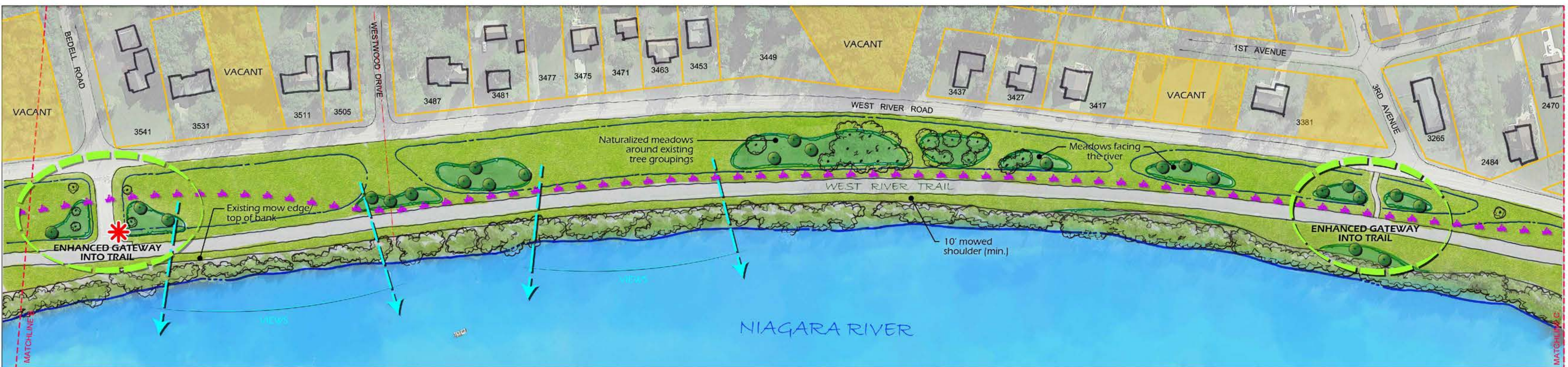
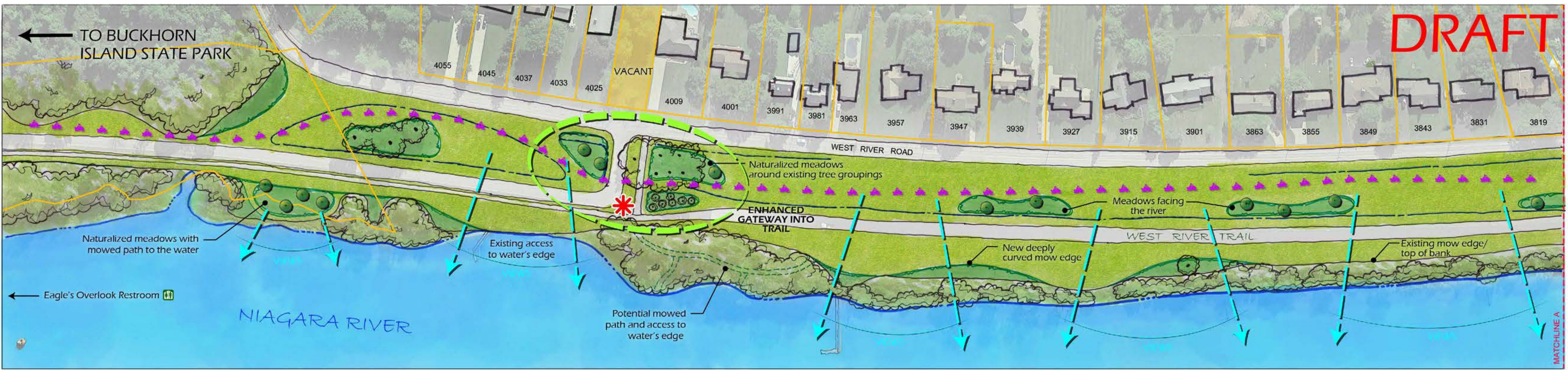














DRAFT

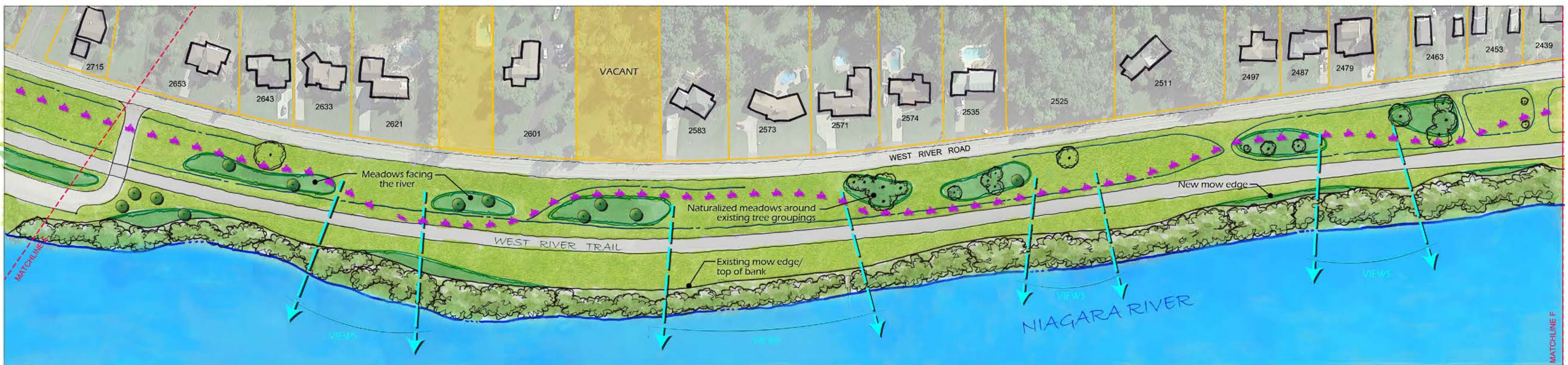
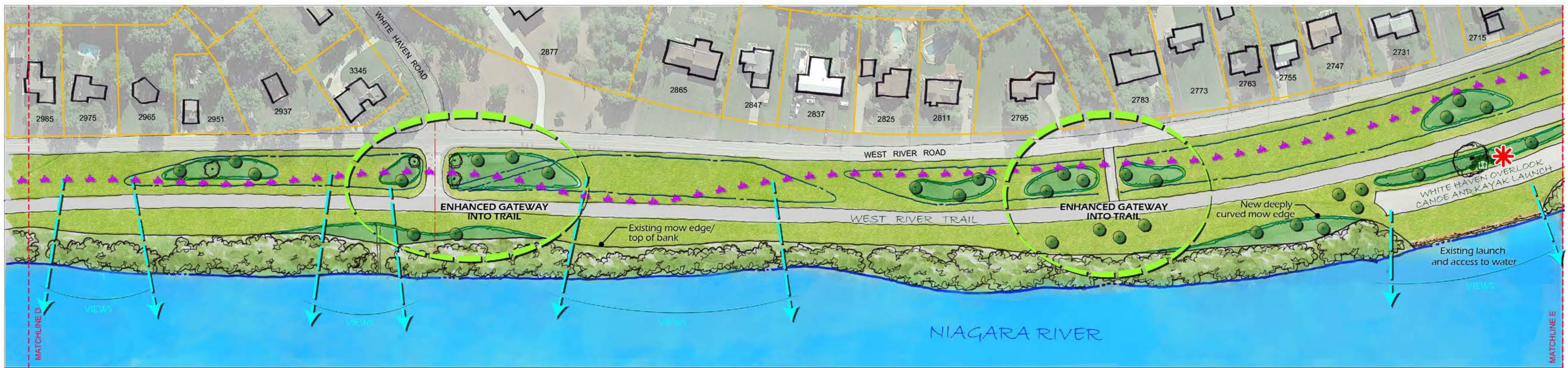
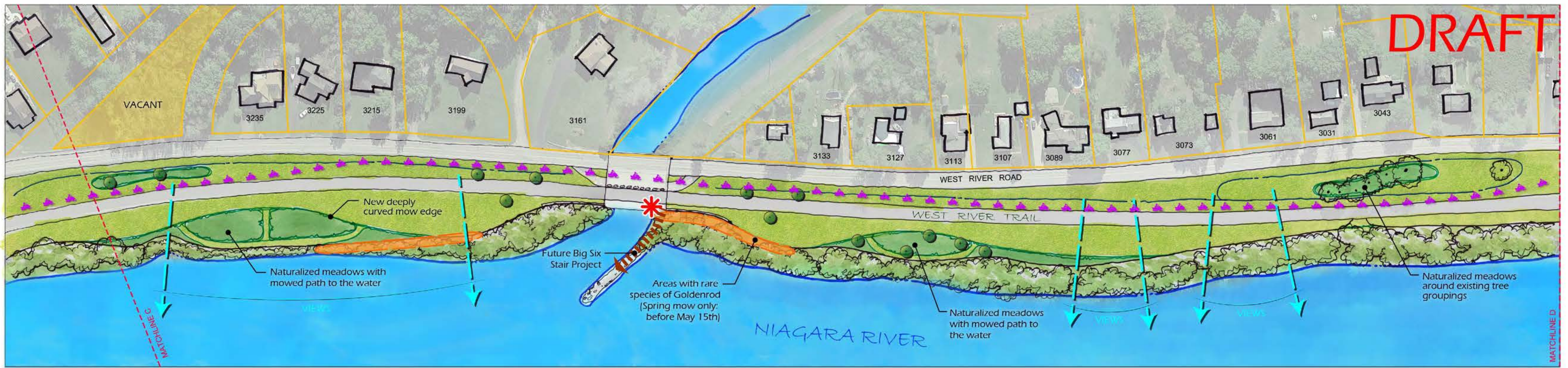


LEGEND:



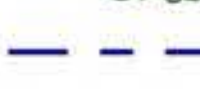









-  Existing Tree
-  Existing Wooded Area (Invasive species removal)
-  Existing Ditch
-  Water's edge
-  Maintained viewsheds
-  Snowmobile Trail
-  Proposed Tree
-  Low-mow (4"-6" high max)  
-to be mowed 6-10 times per year, from May to September
-  High-mow (18"-24" high max)  
-to be mowed 1-3 times in spring and or fall
-  Enhanced Gateway into Trail
-  Potential Portable Toilet Location
-  Site Furnishing (Trash Receptacles and Park Signs)



DRAFT

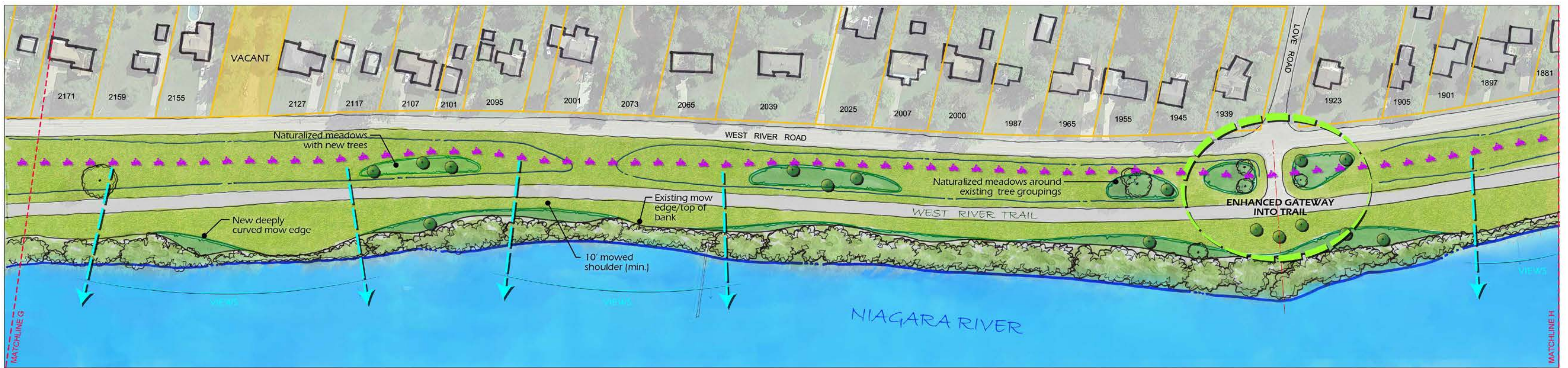


LEGEND:

-  Existing Tree
-  Existing Wooded Area (Invasive species removal)
-  Existing Ditch
-  Water's edge
-  Maintained viewsheds
-  Snowmobile Trail
-  Proposed Tree
-  Low-mow (4"-6" high max)  
-to be mowed 6-10 times per year, from May to September
-  High-mow (18"-24" high max)  
-to be mowed 1-3 times in spring and or fall
-  Enhanced Gateway into Trail
-  Potential Portable Toilet Location
-  Site Furnishing (Trash Receptacles and Park Signs)



DRAFT

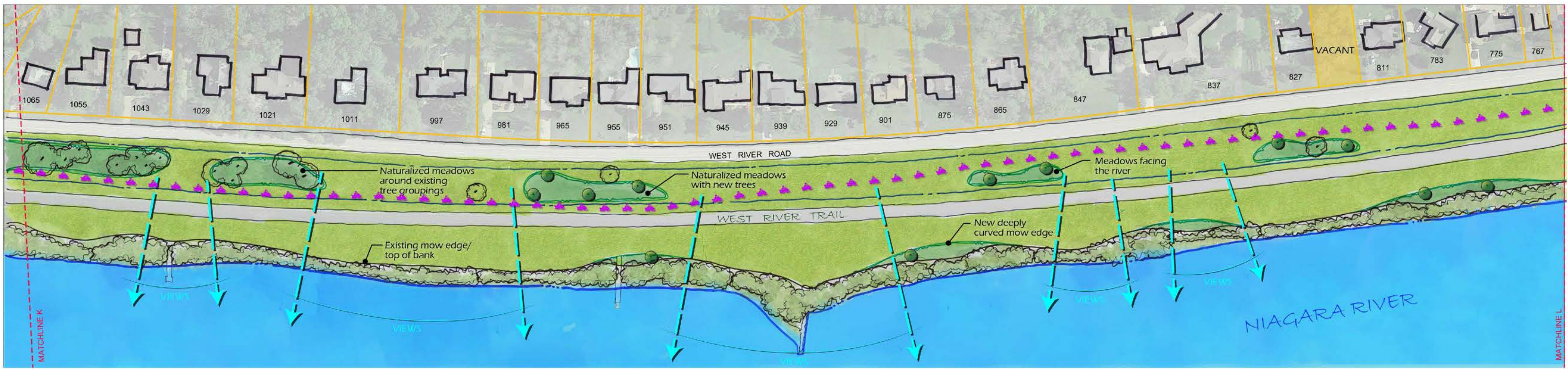
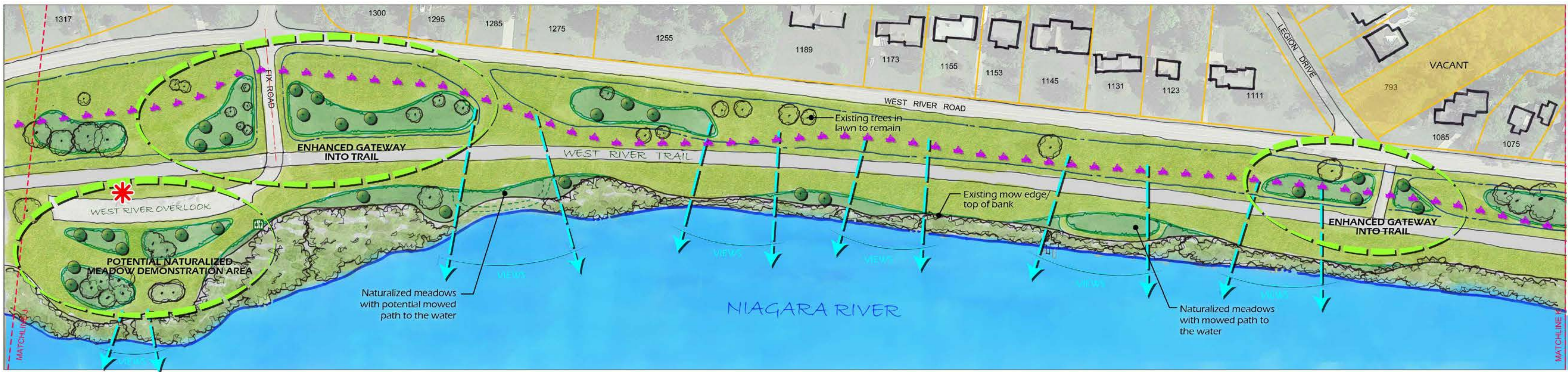
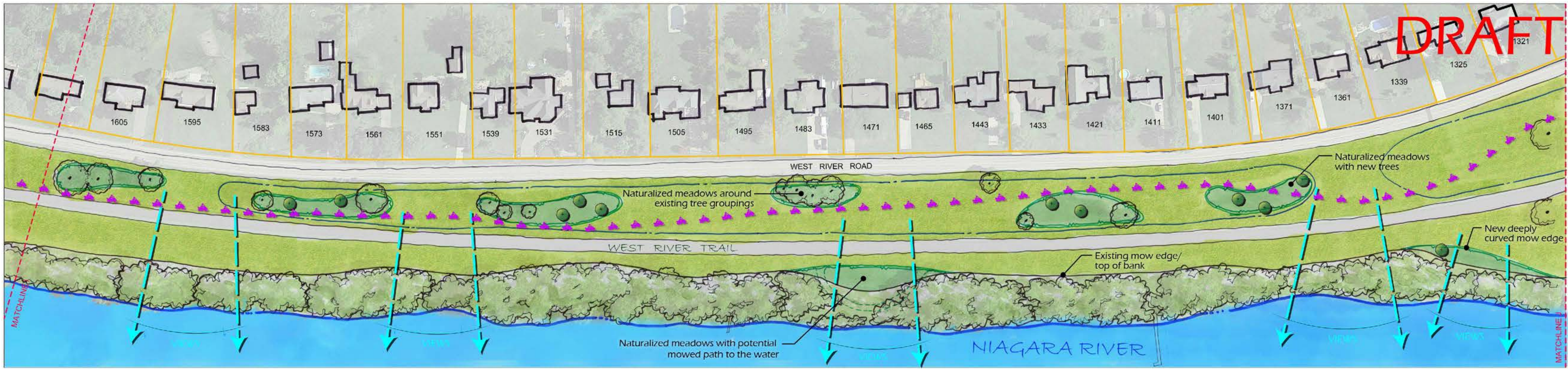


LEGEND:













-  Existing Tree
-  Existing Wooded Area (Invasive species removal)
-  Existing Ditch
-  Water's edge
-  Maintained viewsheds
-  Snowmobile Trail
-  Proposed Tree
-  Low-mow (4"-6" high max)  
-to be mowed 6-10 times per year, from May to September
-  High-mow (18"-24" high max)  
-to be mowed 1-3 times in spring and or fall
-  Enhanced Gateway into Trail
-  Potential Portable Toilet Location
-  Site Furnishing (Trash Receptacles and Park Signs)



DRAFT



LEGEND:

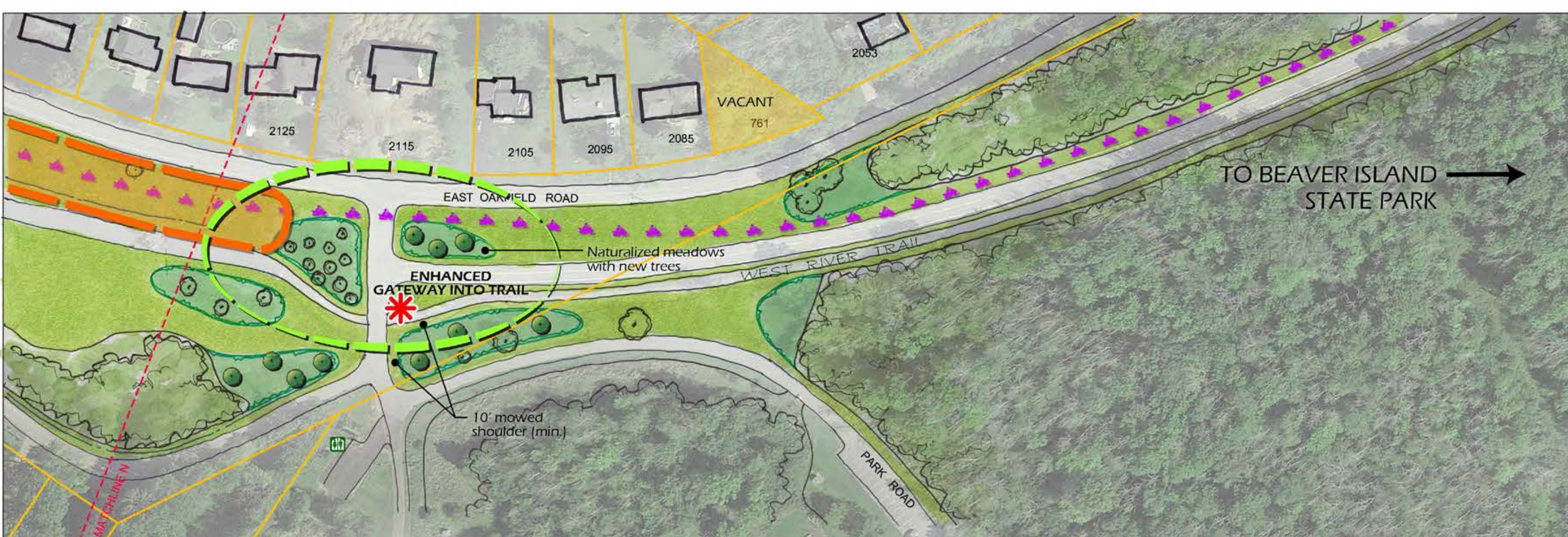
-  Existing Tree
-  Existing Wooded Area (Invasive species removal)
-  Existing Ditch
-  Water's edge
-  Maintained viewsheds
-  Snowmobile Trail
-  Proposed Tree
-  Low-mow (4"-6" high max)  
-to be mowed 6-10 times per year, from May to September
-  High-mow (18"-24" high max)  
-to be mowed 1-3 times in spring and or fall
-  Enhanced Gateway into Trail
-  Potential Portable Toilet Location
-  Site Furnishing (Trash Receptacles and Park Signs)

# WEST RIVER PARKWAY

## LANDSCAPE MANAGEMENT PLAN



**DRAFT**

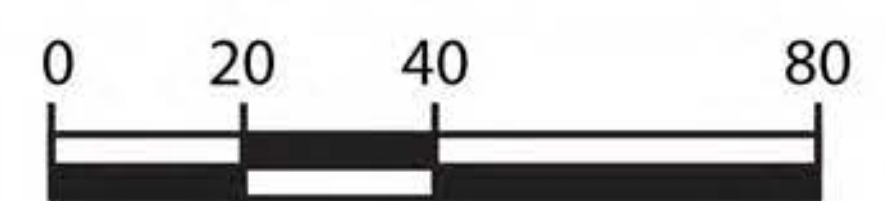
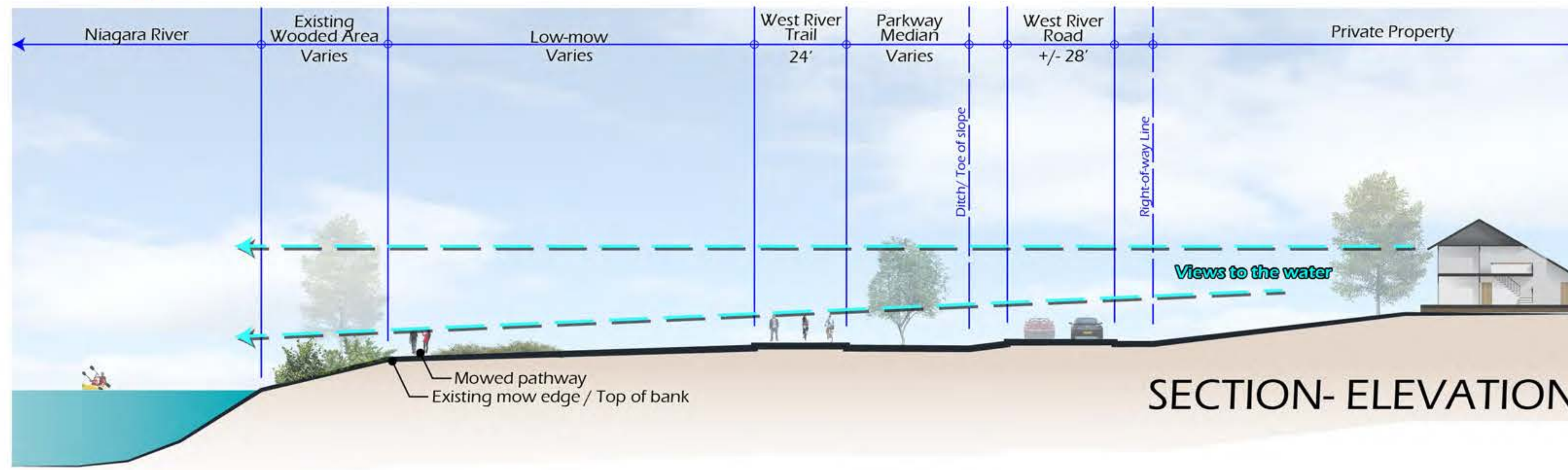
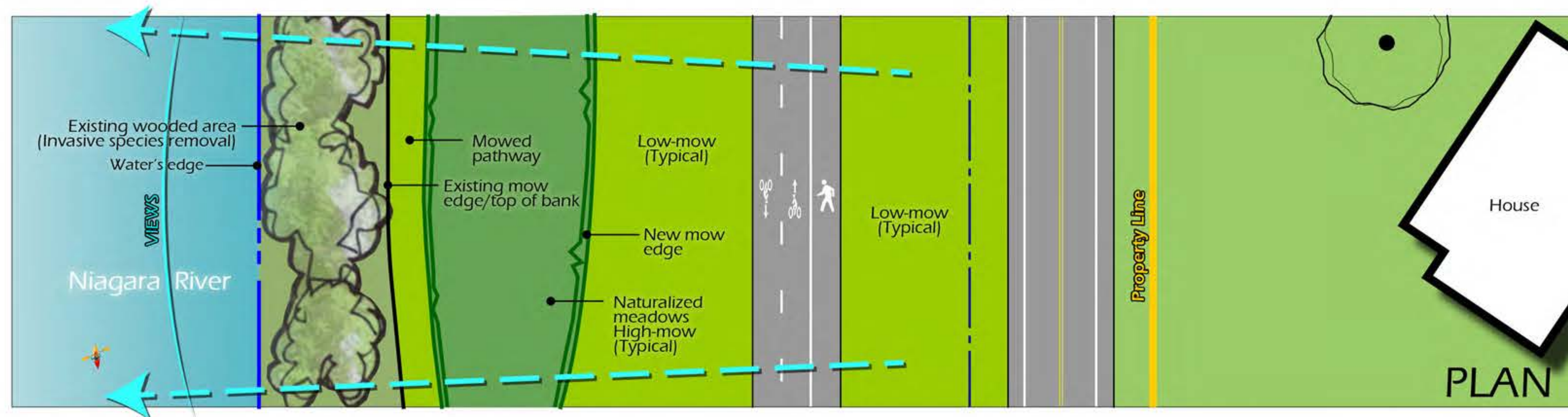
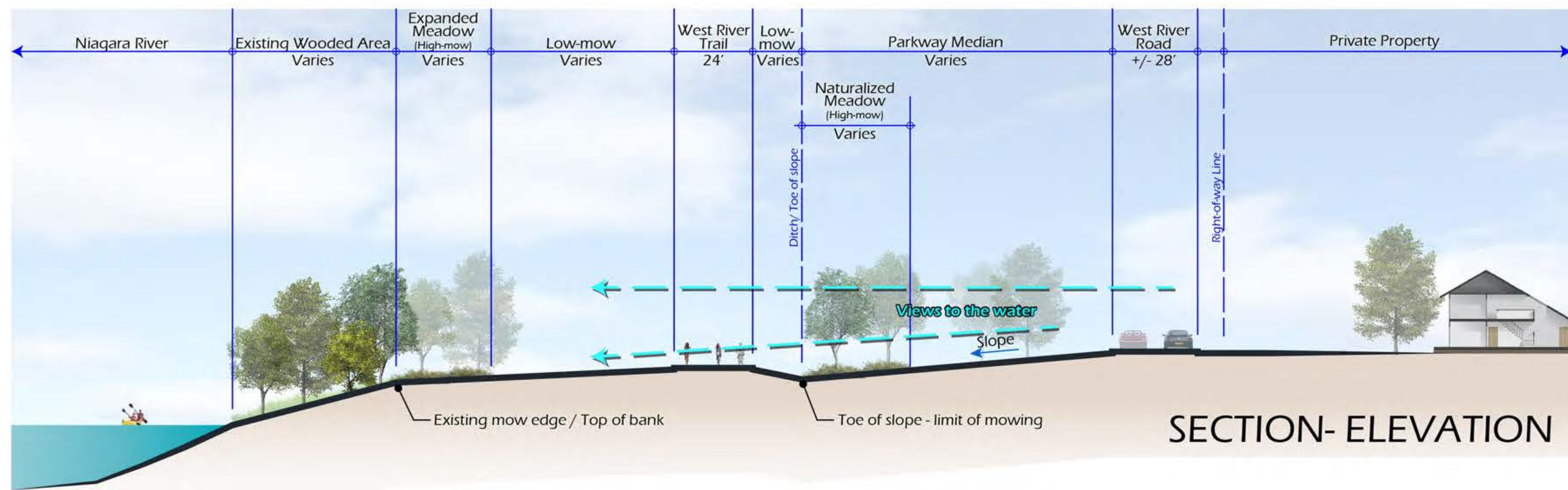
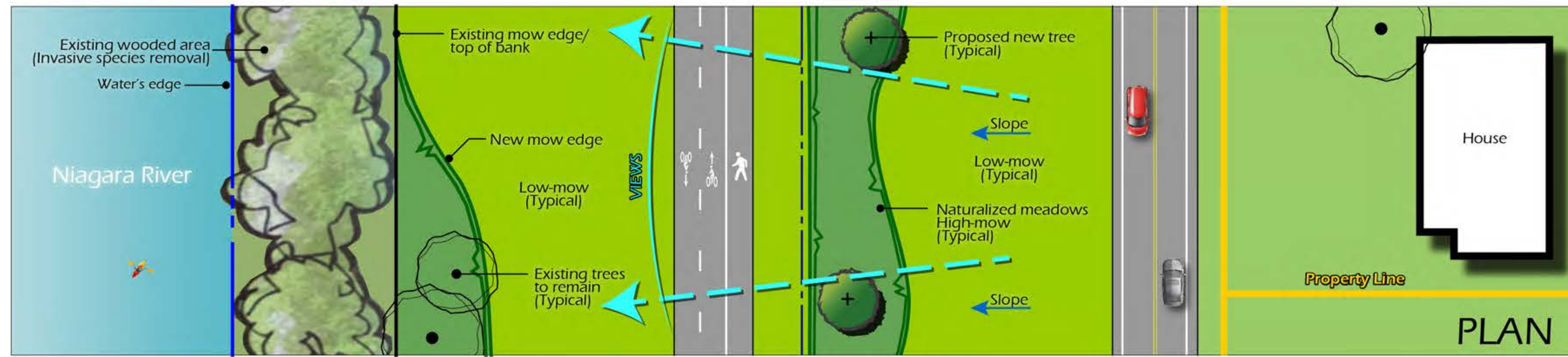


**PLANT PALETTE (Preliminary Options)**

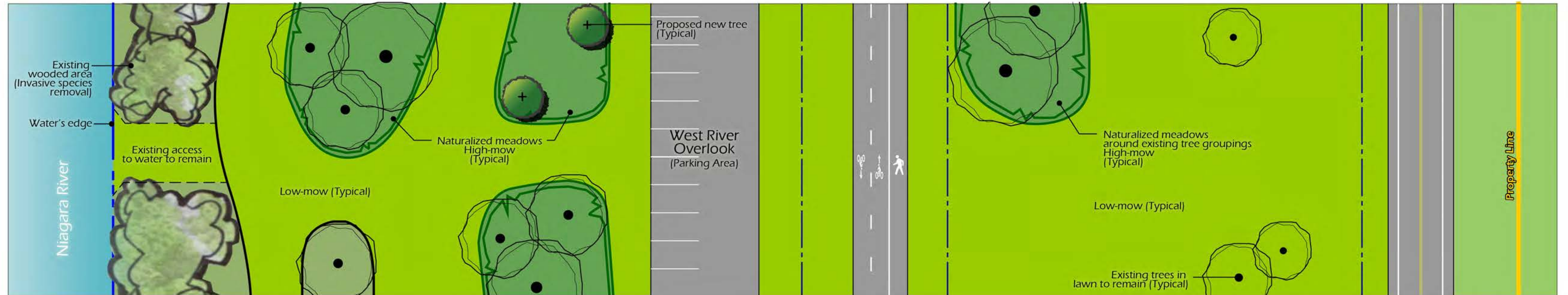

**LEGEND:**

- Existing Tree
- Existing Wooded Area (Invasive species removal)
- Existing Ditch
- Water's edge
- Maintained viewsheds
- Snowmobile Trail
- Proposed Tree
- Low-mow (4"-6" high max) -to be mowed 6-10 times per year, from May to September
- High-mow (18"-24" high max) -to be mowed 1-3 times in spring and or fall
- Enhanced Gateway into Trail
- Potential Portable Toilet Location
- Site Furnishing (Trash Receptacles and Park Signs)

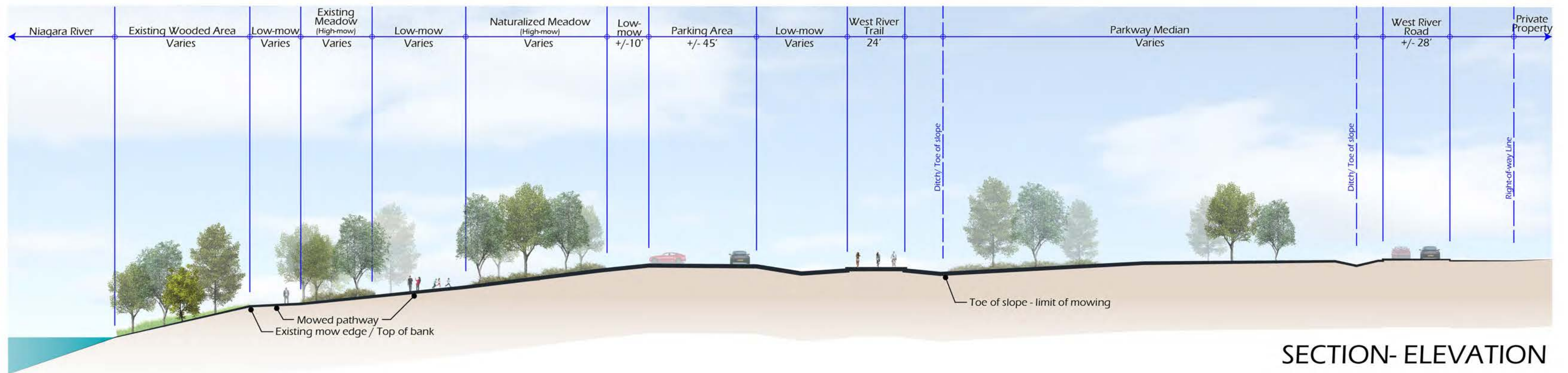








PLAN



SECTION- ELEVATION

