

# Grafton Lakes State Park

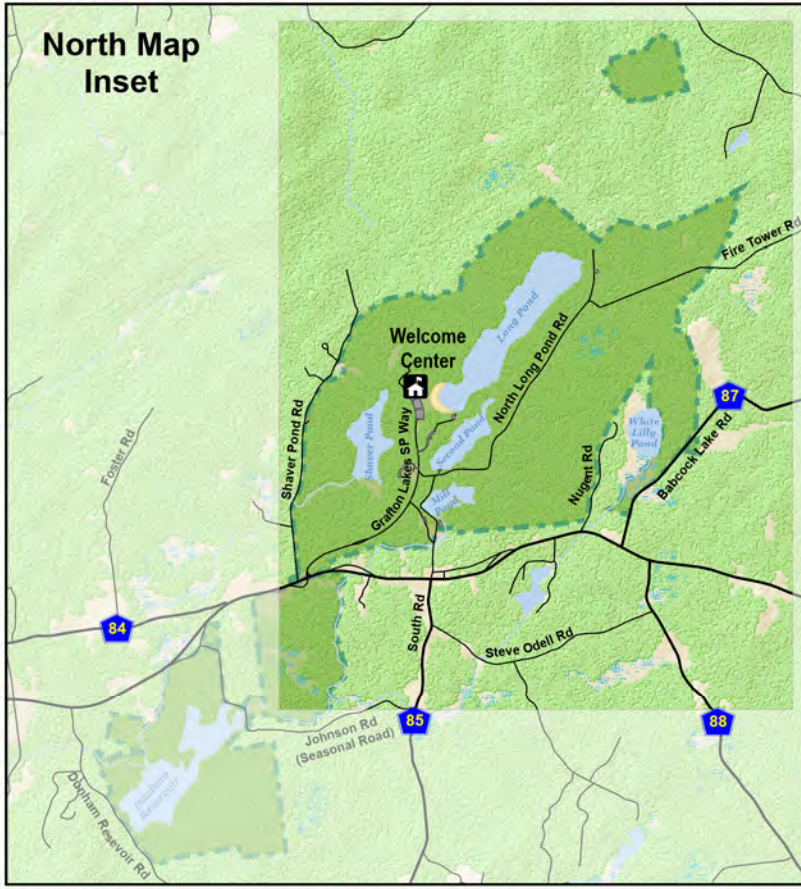
254 Grafton Lakes State Park Way  
Cropseyville, NY 12052

In Case of Emergency: 911  
Park Police: (518) 584-2004  
Welcome Center: (518) 279-1155



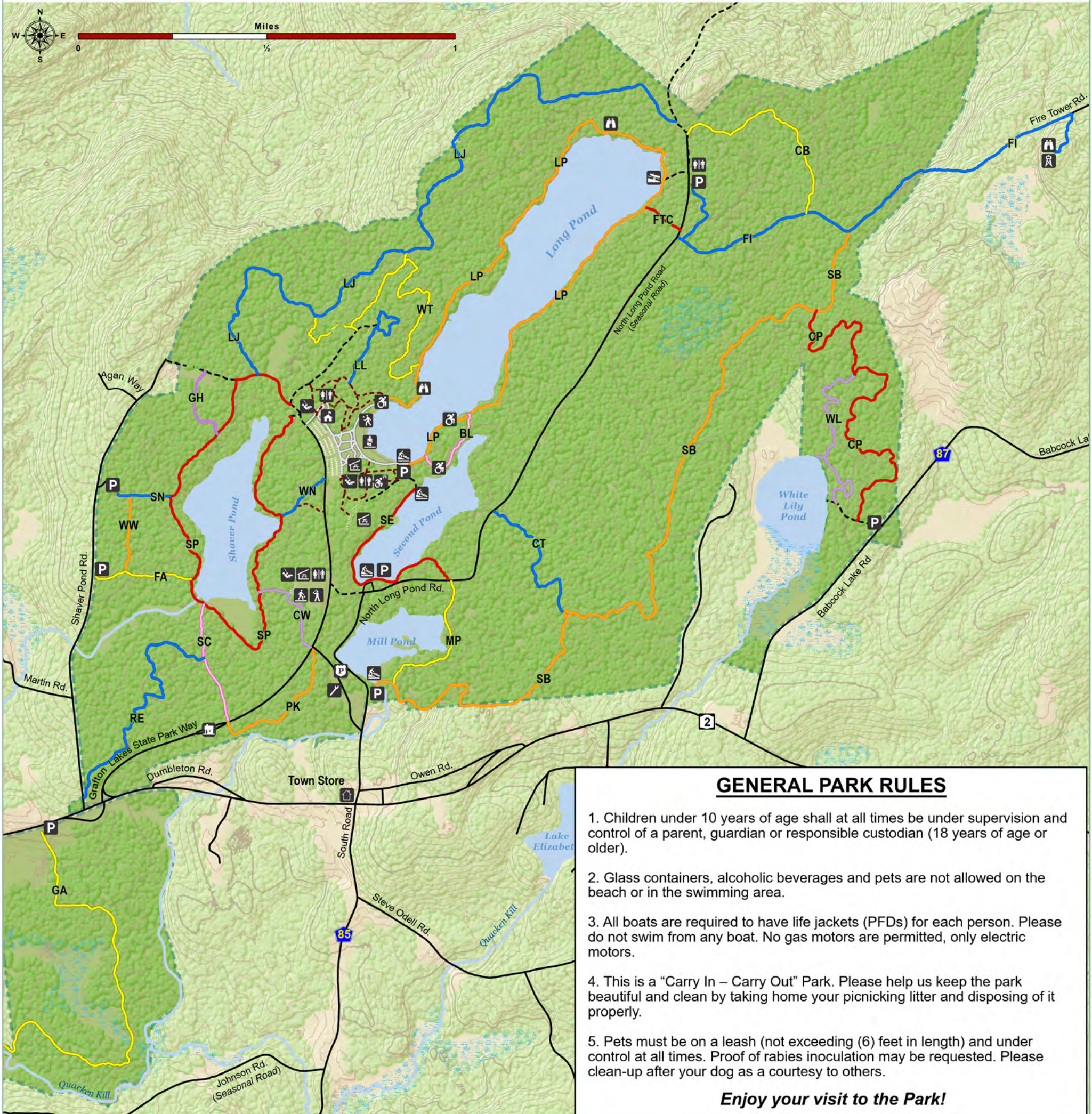
New York State  
Parks, Recreation and  
Historic Preservation

Map produced by NYSOPRHP GIS Bureau, June 15, 2023.



- |                        |                  |                |                                     |
|------------------------|------------------|----------------|-------------------------------------|
| Accessible             | First Aid        | Scenic View    | Unimproved Road (no vehicle access) |
| Accessible Picnic Area | Hand Boat Launch | Softball Field | Unmarked Trail                      |
| Basketball Court       | Maintenance      | Swimming Beach | 100 Foot Contour                    |
| Bathhouse              | Park Police      | Town Store     | 10 Foot Contour                     |
| Boat Launch            | Parking Area     | Volleyball     | Grafton Lakes State Park            |
| Boathouse/Rental       | Picnic Area      | Welcome Center | Water                               |
| Concession Stand       | Picnic Pavilion  | Boardwalk      | Wetland                             |
| Entrance Booth         | Playground       | Road           |                                     |
| Fire Tower             | Public Restroom  |                |                                     |

- Trail Legend**
- |   |                                 |                                    |
|---|---------------------------------|------------------------------------|
| BL-Beaver Lodge - 0.24 Miles            | GA-Gartlers - 1.35 Miles        | SC-Scout - 0.34 Miles              |
| CB-Chet Bell - 0.60 Miles               | GH-Granville Hicks - 0.22 Miles | SE-Second Pond - 0.63 Miles        |
| CP-Conklin Pass - 1.30 Miles            | LJ-Little Johnny's - 2.20 Miles | SN-Shaver Pond Nature - 0.14 Miles |
| CT-Crossover - 0.45 Miles               | LL-Lollipop - 0.38 Miles        | SP-Shaver Pond - 1.90 Miles        |
| CW-Conklin Way - 0.27 Miles             | LP-Long Pond - 2.50 Miles       | WL-White Lily - 0.66 Miles         |
| FA-Fishing Access - 0.27 Miles          | MP-Mill Pond - 0.40 Miles       | WN-Woodland Nature - 0.16 Miles    |
| FI-Fire Tower Interpretive - 1.54 Miles | PK-Perkin's - 0.41 Miles        | WT-Water Tower - 1.12 Miles        |
| FTC-Fire Tower Connector - 0.12 Miles   | RE-Red Eft - 0.78 Miles         | WW-Wildwood - 0.21 Miles           |
|   | SB-Spruce Bog - 2.55 Miles      |                                    |



## GENERAL PARK RULES

- Children under 10 years of age shall at all times be under supervision and control of a parent, guardian or responsible custodian (18 years of age or older).
- Glass containers, alcoholic beverages and pets are not allowed on the beach or in the swimming area.
- All boats are required to have life jackets (PFDs) for each person. Please do not swim from any boat. No gas motors are permitted, only electric motors.
- This is a "Carry In - Carry Out" Park. Please help us keep the park beautiful and clean by taking home your picnicking litter and disposing of it properly.
- Pets must be on a leash (not exceeding (6) feet in length) and under control at all times. Proof of rabies inoculation may be requested. Please clean-up after your dog as a courtesy to others.

**Enjoy your visit to the Park!**