

Figure 1

Trail Assessment - Index Map

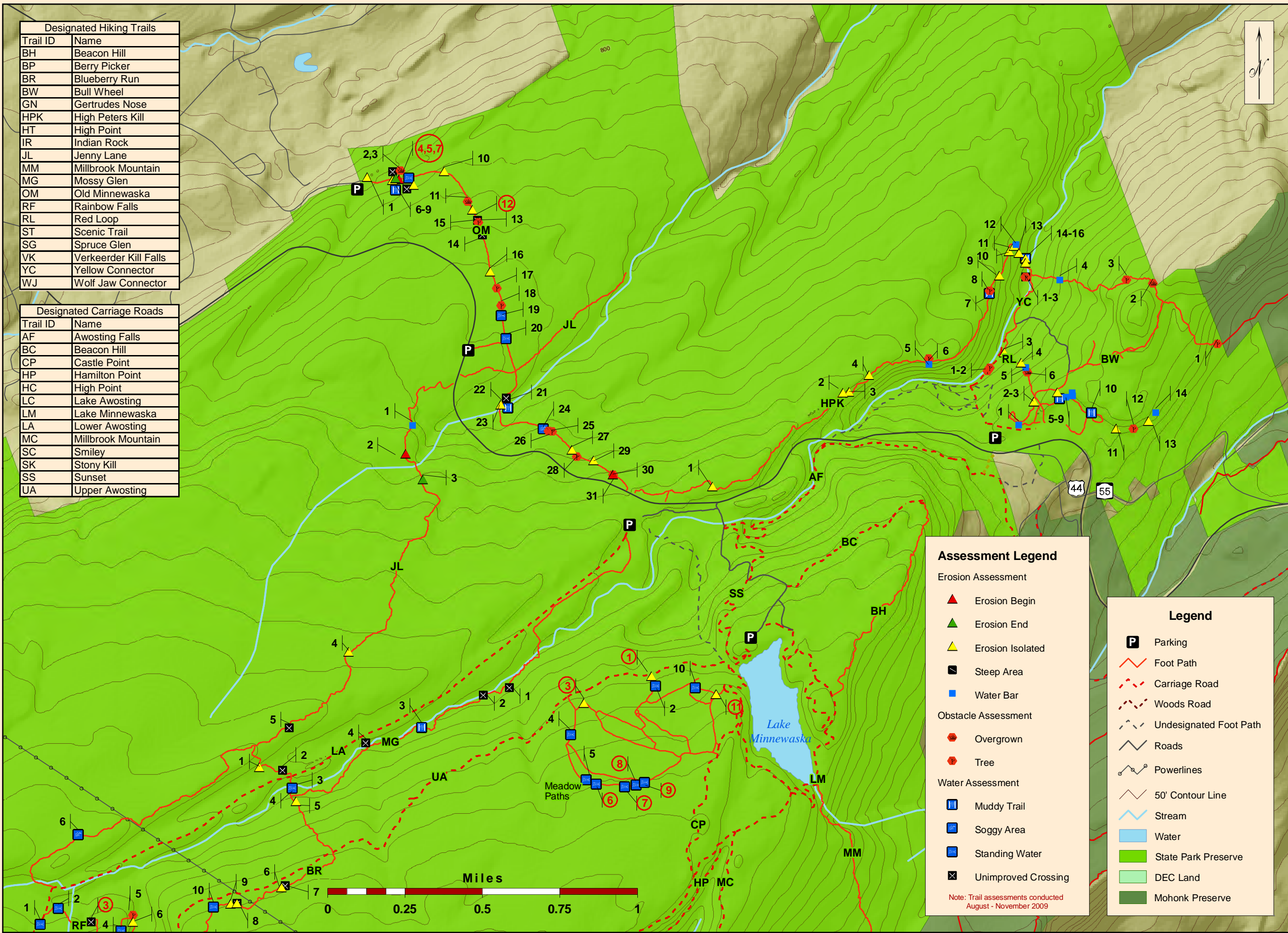
Minnewaska State Park Preserve

Map produced by NYSOPRHP-GIS Unit, April, 2010



Designated Hiking Trails	
Trail ID	Name
BH	Beacon Hill
BP	Berry Picker
BR	Blueberry Run
BW	Bull Wheel
GN	Gertrudes Nose
HPK	High Peters Kill
HT	High Point
IR	Indian Rock
JL	Jenny Lane
MM	Millbrook Mountain
MG	Mossy Glen
OM	Old Minnewaska
RF	Rainbow Falls
RL	Red Loop
ST	Scenic Trail
SG	Spruce Glen
VK	Verkeerder Kill Falls
YC	Yellow Connector
WJ	Wolf Jaw Connector

Designated Carriage Roads	
Trail ID	Name
AF	Awosting Falls
BC	Beacon Hill
CP	Castle Point
HP	Hamilton Point
HC	High Point
LC	Lake Awosting
LM	Lake Minnewaska
LA	Lower Awosting
MC	Millbrook Mountain
SC	Smiley
SK	Stony Kill
SS	Sunset
UA	Upper Awosting



Assessment Legend

Erosion Assessment

- ▲ Erosion Begin
- ▲ Erosion End
- ▲ Erosion Isolated
- Steep Area
- Water Bar

Obstacle Assessment

- Overgrown
- Tree

Water Assessment

- Muddy Trail
- Soggy Area
- Standing Water
- ⊗ Unimproved Crossing

Note: Trail assessments conducted August - November 2009

Legend

- P** Parking
- Foot Path
- - - Carriage Road
- - - Woods Road
- - - Undesignated Foot Path
- Roads
- Powerlines
- 50' Contour Line
- Stream
- Water
- State Park Preserve
- DEC Land
- Mohonk Preserve

Conditions Assessment

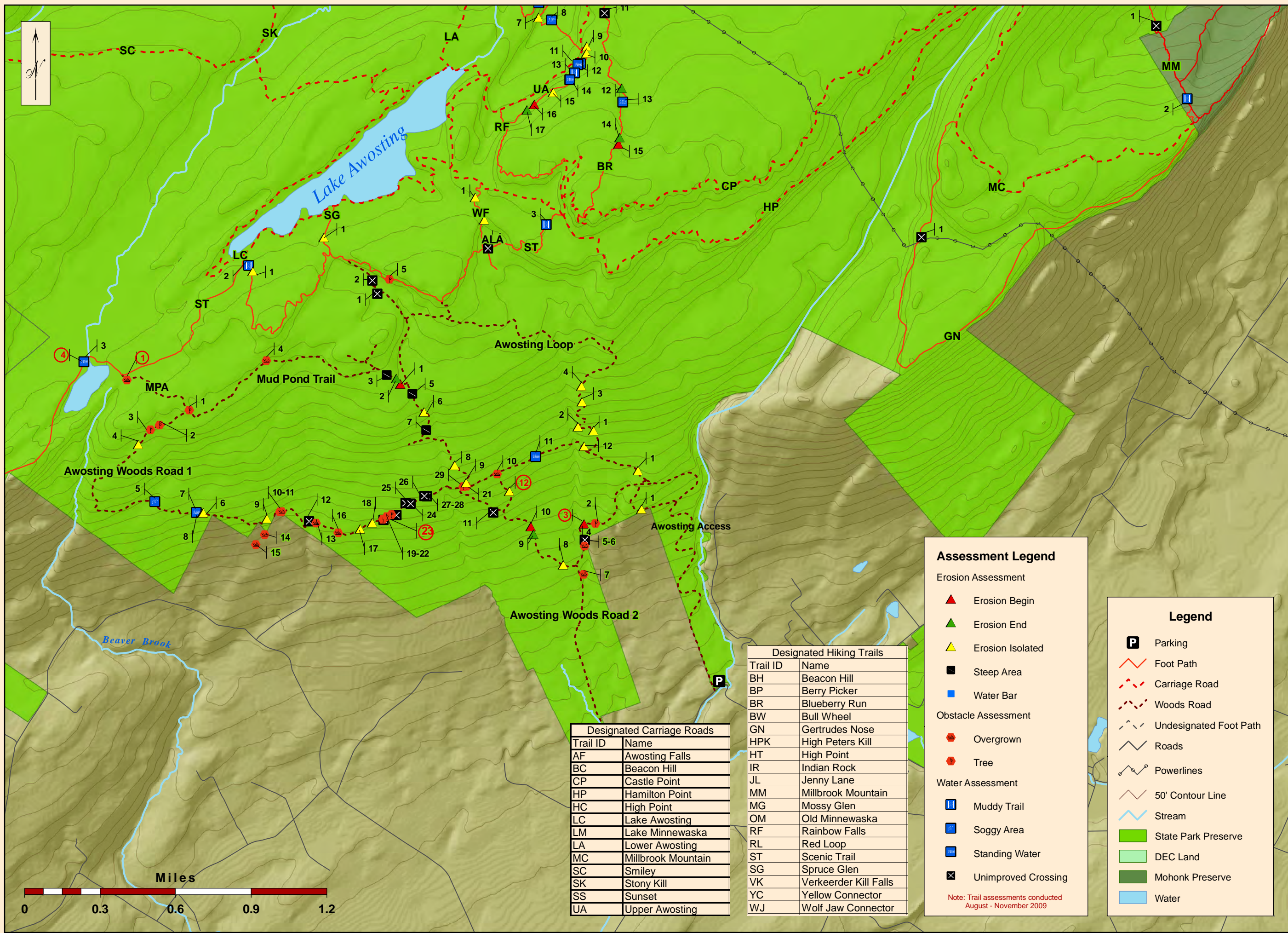
Map A - Northeast

Minnewaska State Park Preserve

Map produced by NYSOPRHP-GIS Unit, December, 2010



Figure 2



Designated Carriage Roads	
Trail ID	Name
AF	Awosting Falls
BC	Beacon Hill
CP	Castle Point
HP	Hamilton Point
HC	High Point
LC	Lake Awosting
LM	Lake Minnewaska
LA	Lower Awosting
MC	Millbrook Mountain
SC	Smiley
SK	Stony Kill
SS	Sunset
UA	Upper Awosting

Designated Hiking Trails	
Trail ID	Name
BH	Beacon Hill
BP	Berry Picker
BR	Blueberry Run
BW	Bull Wheel
GN	Gertrudes Nose
HPK	High Peters Kill
HT	High Point
IR	Indian Rock
JL	Jenny Lane
MM	Millbrook Mountain
MG	Mossy Glen
OM	Old Minnewaska
RF	Rainbow Falls
RL	Red Loop
ST	Scenic Trail
SG	Spruce Glen
VK	Verkeerder Kill Falls
YC	Yellow Connector
WJ	Wolf Jaw Connector

Assessment Legend

Erosion Assessment

- ▲ Erosion Begin
- ▲ Erosion End
- ▲ Erosion Isolated
- Steep Area
- Water Bar

Obstacle Assessment

- Overgrown
- Tree

Water Assessment

- Muddy Trail
- Soggy Area
- Standing Water
- ⊗ Unimproved Crossing

Note: Trail assessments conducted August - November 2009

Legend

- P Parking
- Foot Path
- - - Carriage Road
- - - Woods Road
- - - Undesignated Foot Path
- Roads
- Powerlines
- 50' Contour Line
- Stream
- State Park Preserve
- DEC Land
- Mohonk Preserve
- Water

Conditions Assessment

Map B - Southeast

Minnewaska State Park Preserve

Map produced by NYSOPRHP-GIS Unit, December, 2010



Figure 3

Legend

- Parking
- Foot Path
- Carriage Road
- Woods Road
- Undesignated Foot Path
- Roads
- Powerlines
- 50' Contour Line
- Stream
- Water
- State Park Preserve
- DEC Land
- Mohonk Preserve

Assessment Legend

Erosion Assessment

- Erosion Begin
- Erosion End
- Erosion Isolated

Obstacle Assessment

- Steep Area
- Water Bar
- Overgrown
- Tree

Water Assessment

- Muddy Trail
- Soggy Area
- Standing Water
- Unimproved Crossing

Note: Trail assessments conducted August - November 2009

Designated Hiking Trails

Trail ID	Name
BH	Beacon Hill
BP	Berry Picker
BR	Blueberry Run
BW	Bull Wheel
GN	Gertrudes Nose
HPK	High Peters Kill
HT	High Point
IR	Indian Rock
JL	Jenny Lane
MM	Millbrook Mountain
MG	Mossy Glen
OM	Old Minnewaska
RF	Rainbow Falls
RL	Red Loop
ST	Scenic Trail
SG	Spruce Glen
VK	Verkeerder Kill Falls
YC	Yellow Connector
WJ	Wolf Jaw Connector

Designated Carriage Roads

Trail ID	Name
AF	Awosting Falls
BC	Beacon Hill
CP	Castle Point
HP	Hamilton Point
HC	High Point
LC	Lake Awosting
LM	Lake Minnewaska
LA	Lower Awosting
MC	Millbrook Mountain
SC	Smiley
SK	Stony Kill
SS	Sunset
UA	Upper Awosting

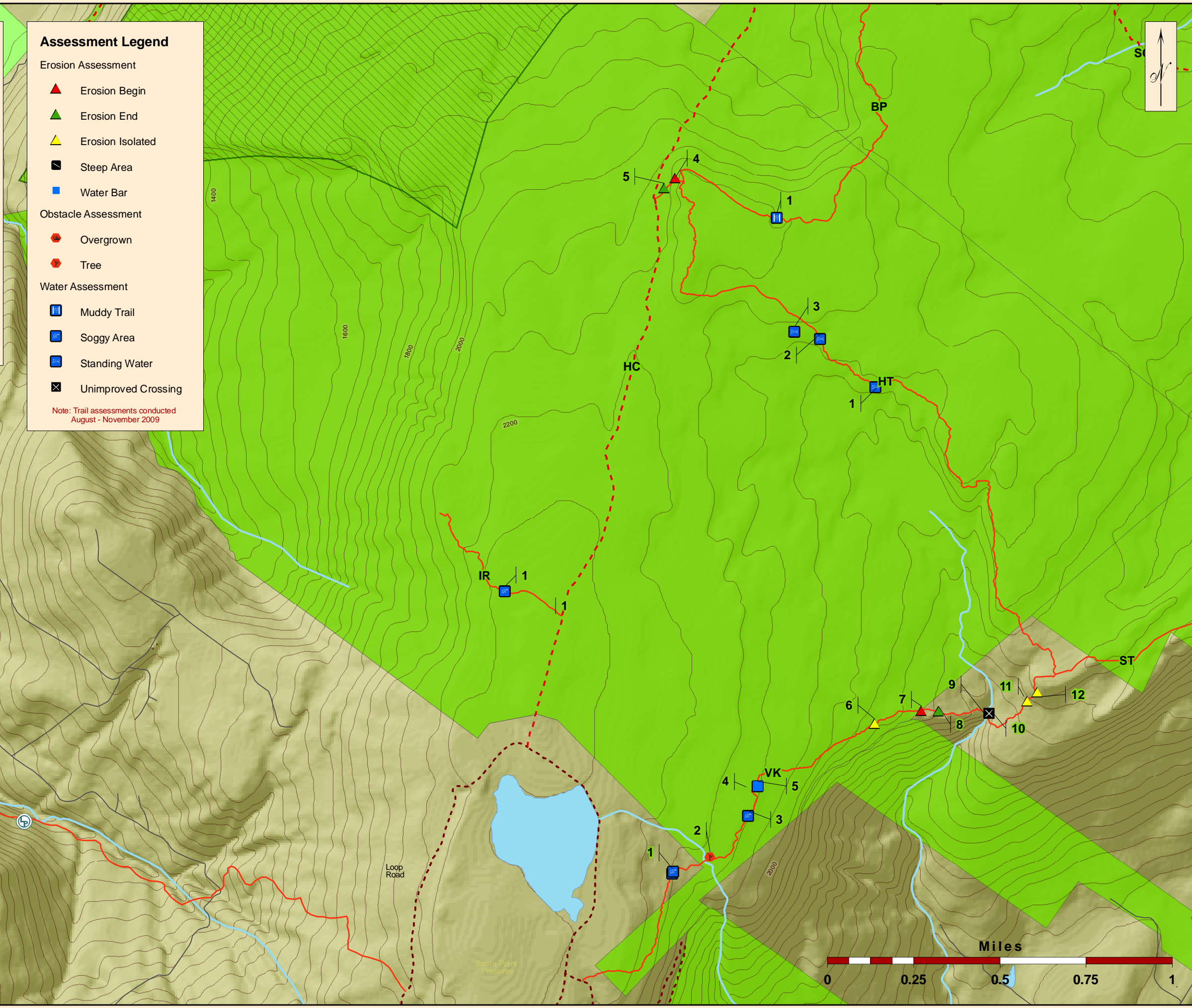
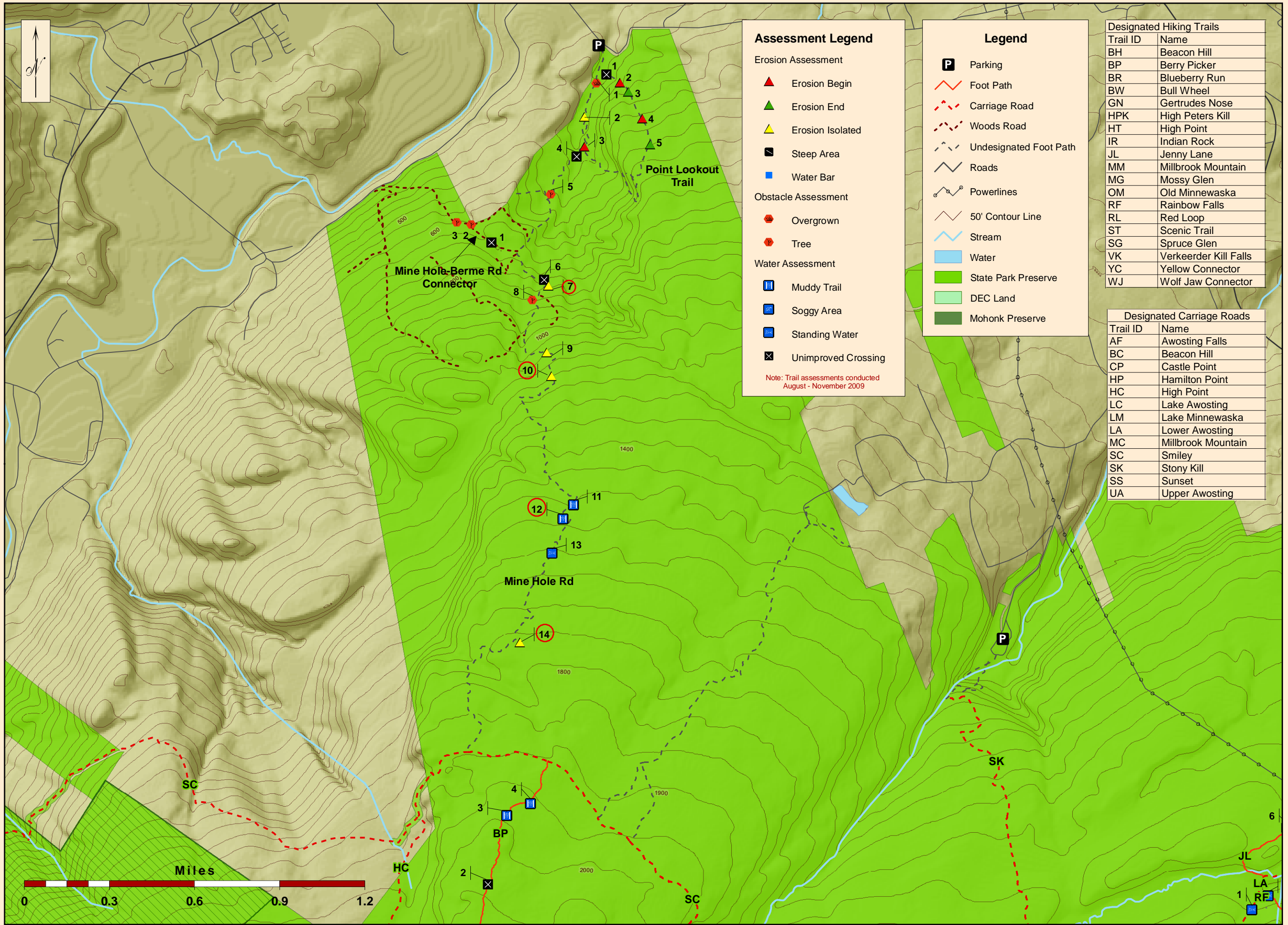


Figure 4

Conditions Assessment
Map C - Southwest
Minnewaska State Park Preserve

Map produced by NYSOPRHP-GIS Unit, December 2010





Assessment Legend

Erosion Assessment

- ▲ Erosion Begin
- ▲ Erosion End
- ▲ Erosion Isolated
- Steep Area
- Water Bar

Obstacle Assessment

- Overgrown
- Tree

Water Assessment

- Muddy Trail
- Soggy Area
- Standing Water
- ⊠ Unimproved Crossing

Note: Trail assessments conducted August - November 2009

Legend

- Parking
- Foot Path
- - - Carriage Road
- - - Woods Road
- - - Undesignated Foot Path
- Roads
- Powerlines
- 50' Contour Line
- Stream
- Water
- State Park Preserve
- DEC Land
- Mohonk Preserve

Designated Hiking Trails

Trail ID	Name
BH	Beacon Hill
BP	Berry Picker
BR	Blueberry Run
BW	Bull Wheel
GN	Gertrudes Nose
HPK	High Peters Kill
HT	High Point
IR	Indian Rock
JL	Jenny Lane
MM	Millbrook Mountain
MG	Mossy Glen
OM	Old Minnewaska
RF	Rainbow Falls
RL	Red Loop
ST	Scenic Trail
SG	Spruce Glen
VK	Verkeerder Kill Falls
YC	Yellow Connector
WJ	Wolf Jaw Connector

Designated Carriage Roads

Trail ID	Name
AF	Awosting Falls
BC	Beacon Hill
CP	Castle Point
HP	Hamilton Point
HC	High Point
LC	Lake Awosting
LM	Lake Minnewaska
LA	Lower Awosting
MC	Millbrook Mountain
SC	Smiley
SK	Stony Kill
SS	Sunset
UA	Upper Awosting

Figure 5

Conditions Assessment

Map D - Northwest

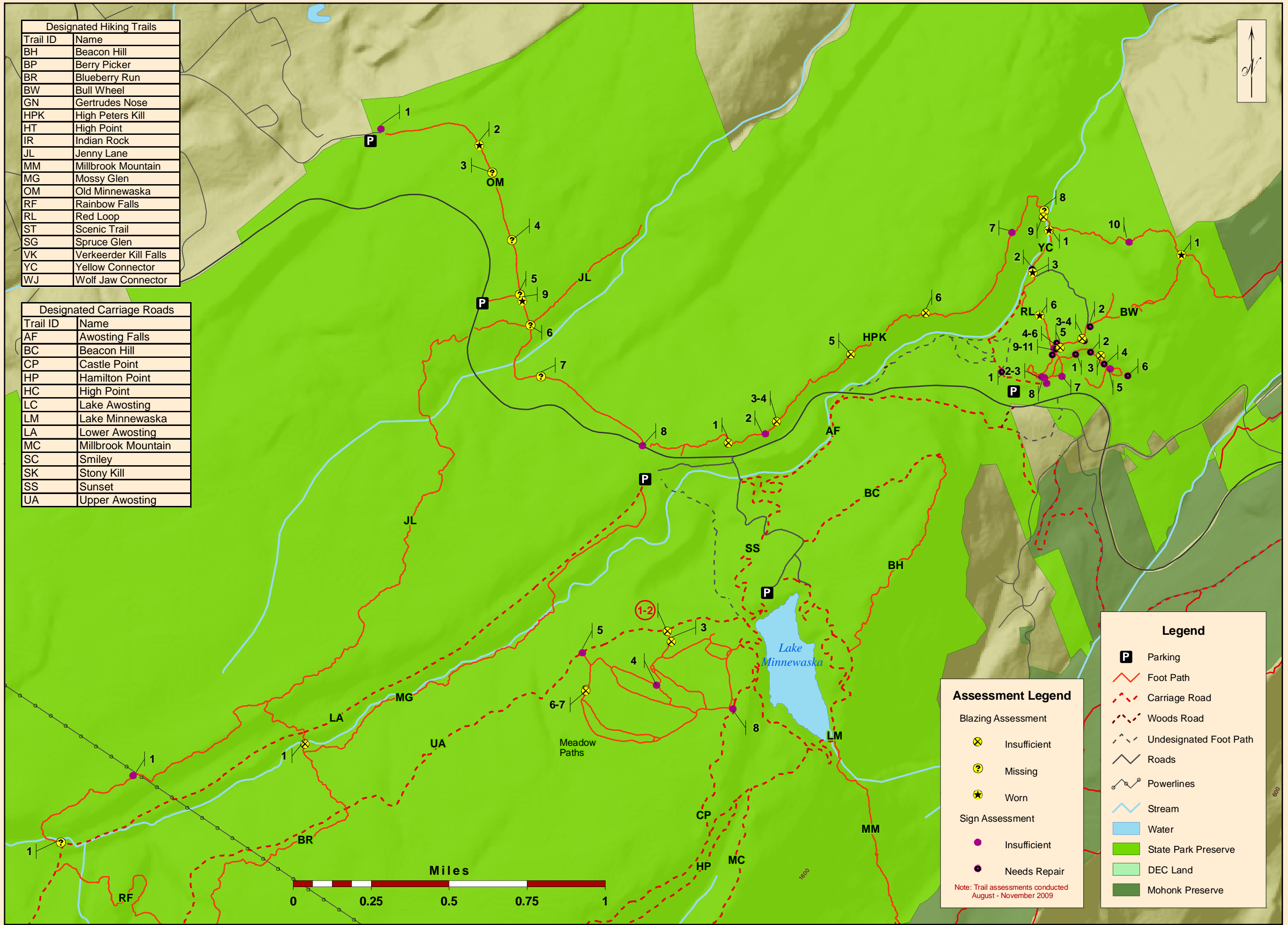
Minnewaska State Park Preserve

Map produced by NYSOPRHP-GIS Unit, December 2010



Designated Hiking Trails	
Trail ID	Name
BH	Beacon Hill
BP	Berry Picker
BR	Blueberry Run
BW	Bull Wheel
GN	Gertrudes Nose
HPK	High Peters Kill
HT	High Point
IR	Indian Rock
JL	Jenny Lane
MM	Millbrook Mountain
MG	Mossy Glen
OM	Old Minnewaska
RF	Rainbow Falls
RL	Red Loop
ST	Scenic Trail
SG	Spruce Glen
VK	Verkeerder Kill Falls
YC	Yellow Connector
WJ	Wolf Jaw Connector

Designated Carriage Roads	
Trail ID	Name
AF	Awosting Falls
BC	Beacon Hill
CP	Castle Point
HP	Hamilton Point
HC	High Point
LC	Lake Awosting
LM	Lake Minnewaska
LA	Lower Awosting
MC	Millbrook Mountain
SC	Smiley
SK	Stony Kill
SS	Sunset
UA	Upper Awosting



Assessment Legend

Blazing Assessment

- ⊗ Insufficient
- ⊙ Missing
- ★ Worn

Sign Assessment

- Insufficient
- Needs Repair

Note: Trail assessments conducted August - November 2009

Legend

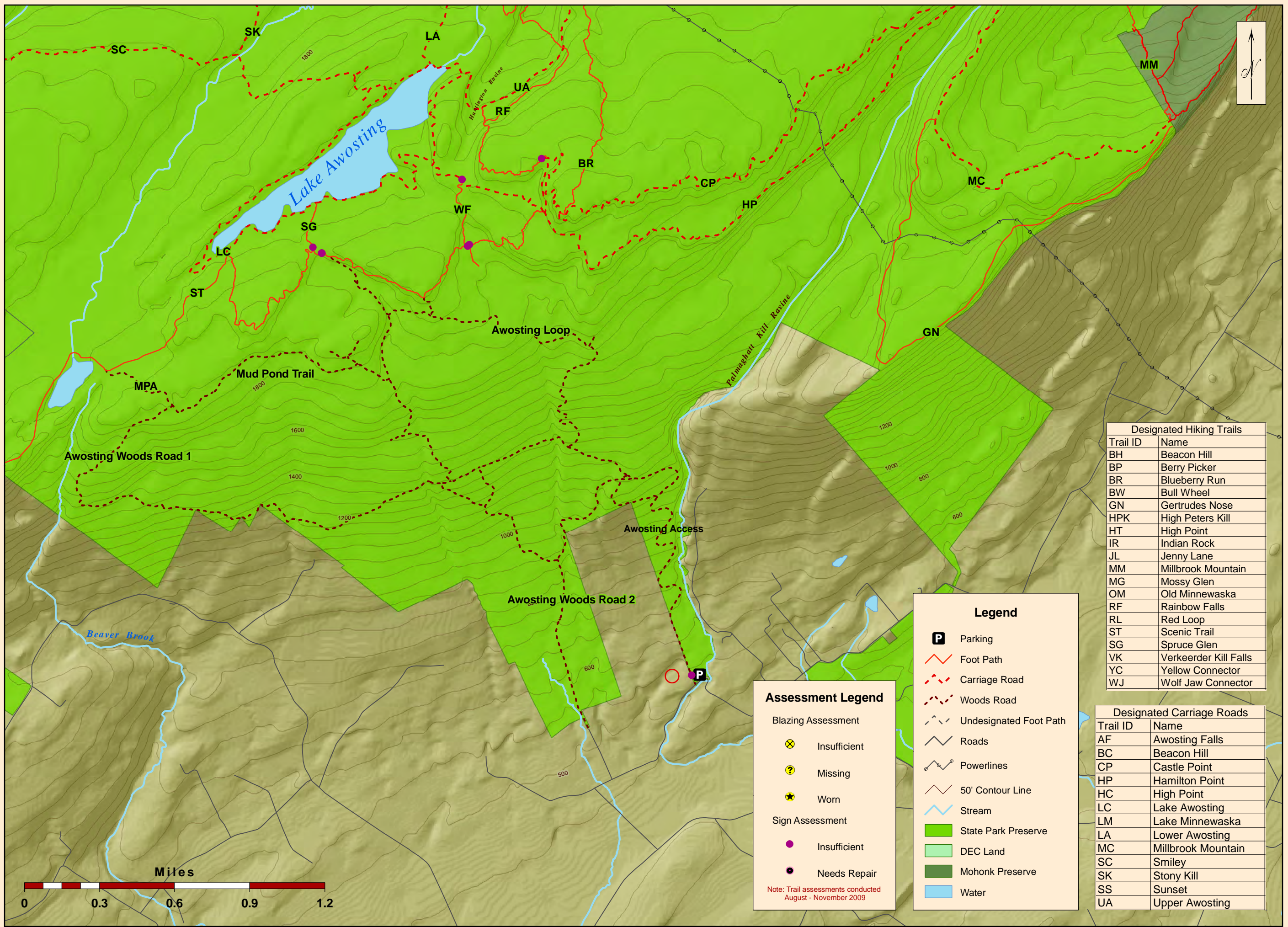
- P Parking
- Foot Path
- - - Carriage Road
- - - Woods Road
- - - Undesignated Foot Path
- Roads
- Powerlines
- Stream
- Water
- State Park Preserve
- DEC Land
- Mohonk Preserve

Blazing and Signage Assessment
Map A - Northeast
Minnewaska State Park Preserve

Figure 6



Map produced by NYSOPRHP-GIS Unit, December 2010



Assessment Legend

Blazing Assessment

- Insufficient
- Missing
- Worn

Sign Assessment

- Insufficient
- Needs Repair

Note: Trail assessments conducted August - November 2009

Legend

- Parking
- Foot Path
- Carriage Road
- Woods Road
- Undesignated Foot Path
- Roads
- Powerlines
- 50' Contour Line
- Stream
- State Park Preserve
- DEC Land
- Mohonk Preserve
- Water

Designated Hiking Trails

Trail ID	Name
BH	Beacon Hill
BP	Berry Picker
BR	Blueberry Run
BW	Bull Wheel
GN	Gertrudes Nose
HPK	High Peters Kill
HT	High Point
IR	Indian Rock
JL	Jenny Lane
MM	Millbrook Mountain
MG	Mossy Glen
OM	Old Minnewaska
RF	Rainbow Falls
RL	Red Loop
ST	Scenic Trail
SG	Spruce Glen
VK	Verkeerder Kill Falls
YC	Yellow Connector
WJ	Wolf Jaw Connector

Designated Carriage Roads

Trail ID	Name
AF	Awosting Falls
BC	Beacon Hill
CP	Castle Point
HP	Hamilton Point
HC	High Point
LC	Lake Awosting
LM	Lake Minnewaska
LA	Lower Awosting
MC	Millbrook Mountain
SC	Smiley
SK	Stony Kill
SS	Sunset
UA	Upper Awosting

Blazing and Signage Assessment
Map B - Southeast
Minnewaska State Park Preserve

Map produced by NY SOPRHP-GIS Unit, December 2010



Figure 7

Legend

- Parking
- Foot Path
- Carriage Road
- Woods Road
- Undesignated Foot Path
- Roads
- Powerlines
- 50' Contour Line
- Stream
- Water
- State Park Preserve
- DEC Land
- Mohonk Preserve

Assessment Legend

Blazing Assessment

- Insufficient
- Missing
- Worn

Sign Assessment

- Insufficient
- Needs Repair

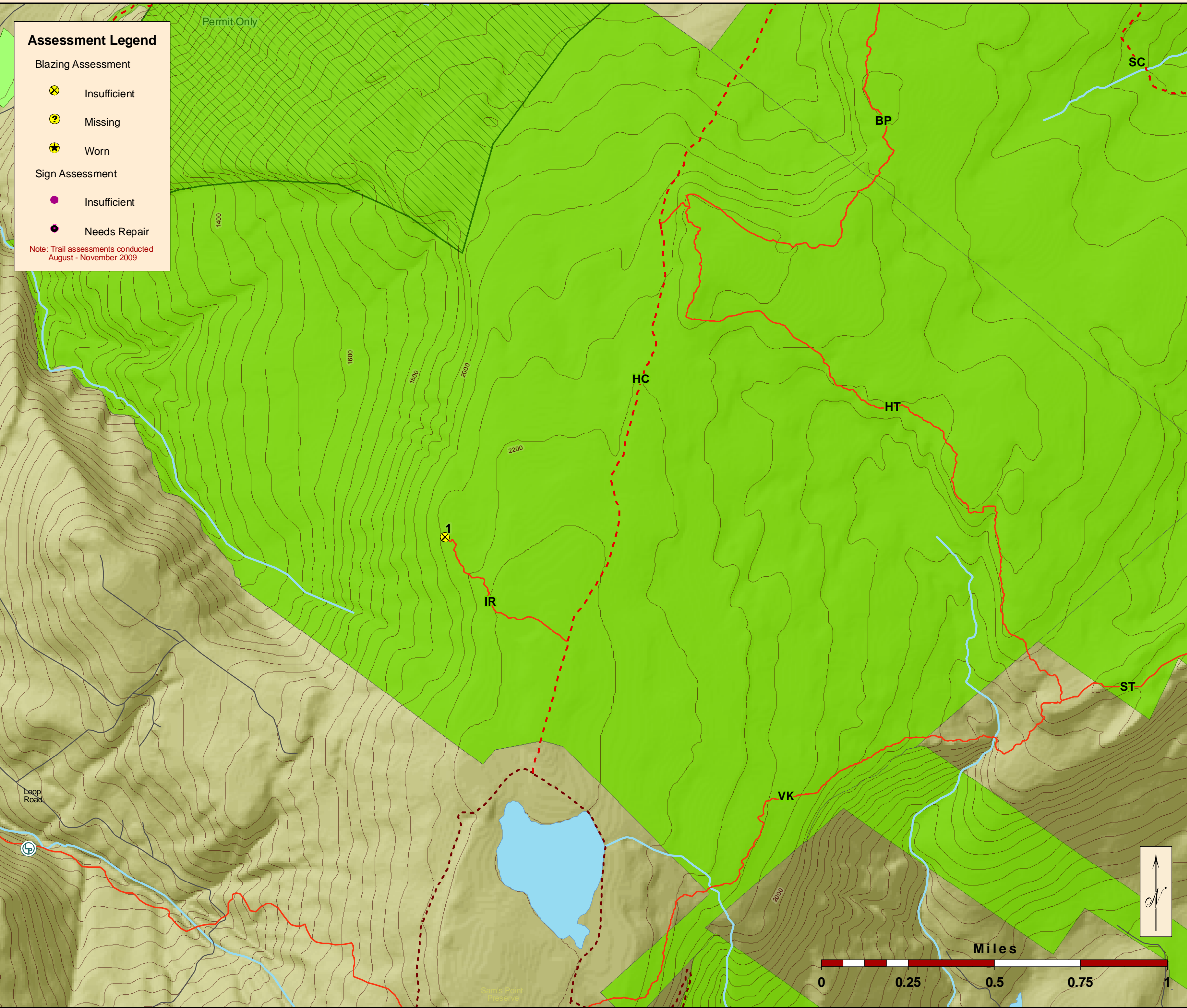
Note: Trail assessments conducted August - November 2009

Designated Hiking Trails

Trail ID	Name
BH	Beacon Hill
BP	Berry Picker
BR	Blueberry Run
BW	Bull Wheel
GN	Gertrudes Nose
HPK	High Peters Kill
HT	High Point
IR	Indian Rock
JL	Jenny Lane
MM	Millbrook Mountain
MG	Mossy Glen
OM	Old Minnewaska
RF	Rainbow Falls
RL	Red Loop
ST	Scenic Trail
SG	Spruce Glen
VK	Verkeerder Kill Falls
YC	Yellow Connector
WJ	Wolf Jaw Connector

Designated Carriage Roads

Trail ID	Name
AF	Awosting Falls
BC	Beacon Hill
CP	Castle Point
HP	Hamilton Point
HC	High Point
LC	Lake Awosting
LM	Lake Minnewaska
LA	Lower Awosting
MC	Millbrook Mountain
SC	Smiley
SK	Stony Kill
SS	Sunset
UA	Upper Awosting

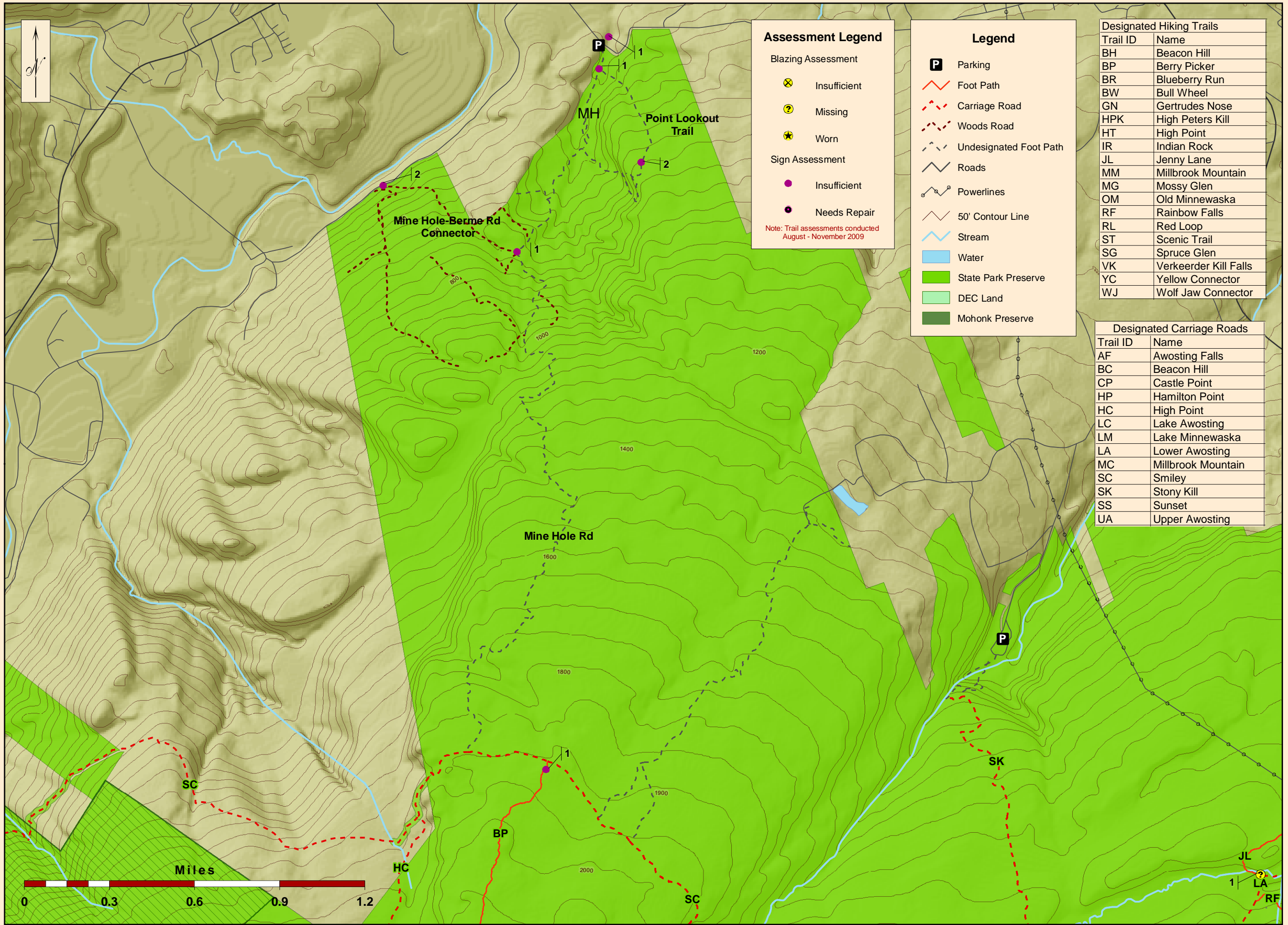


Blazing and Signage Assessment
Map C - Southwest
Minnewaska State Park Preserve

Map produced by NYSOPRHP-GIS Unit, December 2010



Figure 8



Assessment Legend

Blazing Assessment

- ⊗ Insufficient
- ⊙ Missing
- ★ Worn

Sign Assessment

- Insufficient
- Needs Repair

Note: Trail assessments conducted August - November 2009

Legend

- P** Parking
- Foot Path
- - - Carriage Road
- · - Woods Road
- · - Undesignated Foot Path
- Roads
- Powerlines
- 50' Contour Line
- Stream
- Water
- State Park Preserve
- DEC Land
- Mohonk Preserve

Designated Hiking Trails

Trail ID	Name
BH	Beacon Hill
BP	Berry Picker
BR	Blueberry Run
BW	Bull Wheel
GN	Gertrudes Nose
HPK	High Peters Kill
HT	High Point
IR	Indian Rock
JL	Jenny Lane
MM	Millbrook Mountain
MG	Mossy Glen
OM	Old Minnewaska
RF	Rainbow Falls
RL	Red Loop
ST	Scenic Trail
SG	Spruce Glen
VK	Verkeerder Kill Falls
YC	Yellow Connector
WJ	Wolf Jaw Connector

Designated Carriage Roads

Trail ID	Name
AF	Awosting Falls
BC	Beacon Hill
CP	Castle Point
HP	Hamilton Point
HC	High Point
LC	Lake Awosting
LM	Lake Minnewaska
LA	Lower Awosting
MC	Millbrook Mountain
SC	Smiley
SK	Stony Kill
SS	Sunset
UA	Upper Awosting

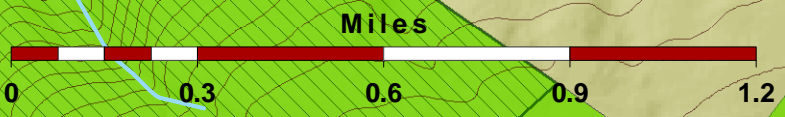


Figure 9

Blazing and Signage Assessment
Map D - Northwest
Minnewaska State Park Preserve

Map produced by NYSOPRHP-GIS Unit, December 2010

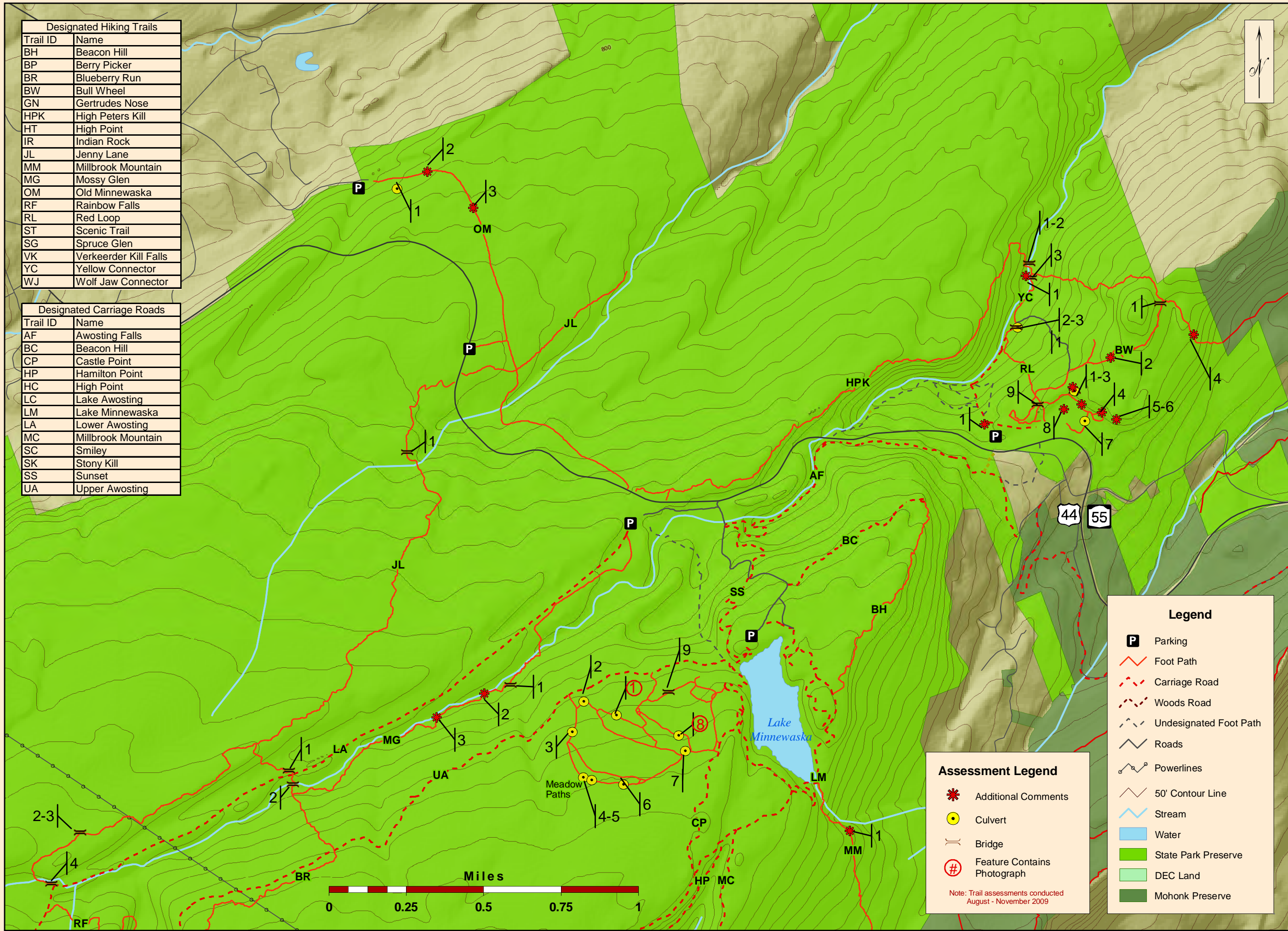


Designated Hiking Trails

Trail ID	Name
BH	Beacon Hill
BP	Berry Picker
BR	Blueberry Run
BW	Bull Wheel
GN	Gertrudes Nose
HPK	High Peters Kill
HT	High Point
IR	Indian Rock
JL	Jenny Lane
MM	Millbrook Mountain
MG	Mossy Glen
OM	Old Minnewaska
RF	Rainbow Falls
RL	Red Loop
ST	Scenic Trail
SG	Spruce Glen
VK	Verkeerder Kill Falls
YC	Yellow Connector
WJ	Wolf Jaw Connector

Designated Carriage Roads

Trail ID	Name
AF	Awosting Falls
BC	Beacon Hill
CP	Castle Point
HP	Hamilton Point
HC	High Point
LC	Lake Awosting
LM	Lake Minnewaska
LA	Lower Awosting
MC	Millbrook Mountain
SC	Smiley
SK	Stony Kill
SS	Sunset
UA	Upper Awosting



Legend

- Parking
- Foot Path
- Carriage Road
- Woods Road
- Undesignated Foot Path
- Roads
- Powerlines
- 50' Contour Line
- Stream
- Water
- State Park Preserve
- DEC Land
- Mohonk Preserve

Assessment Legend

- Additional Comments
- Culvert
- Bridge
- Feature Contains Photograph

Note: Trail assessments conducted August - November 2009

Culverts, Bridges and Additional Comments

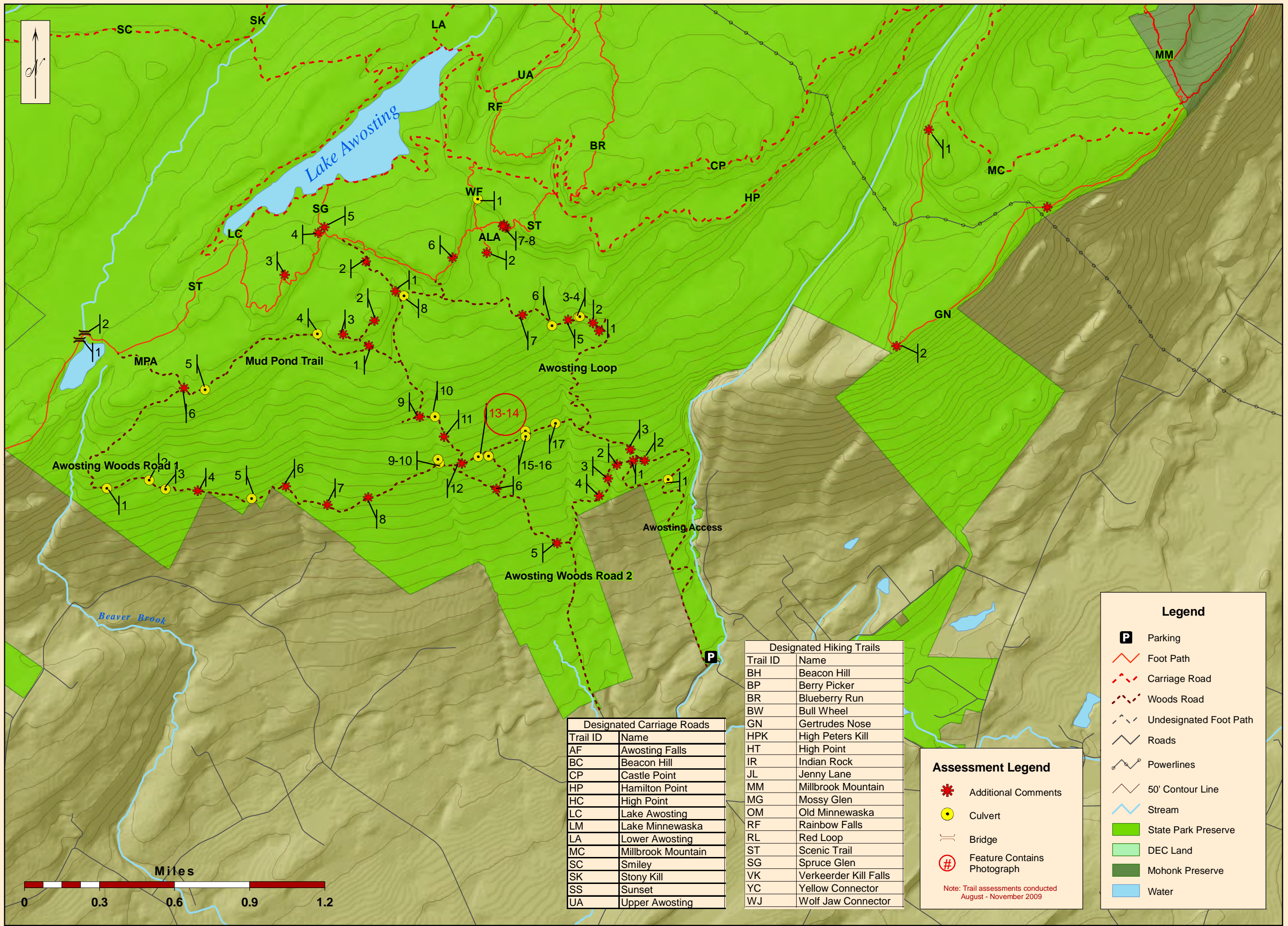
Map A - Northeast

Minnewaska State Park Preserve

Figure 10



Map produced by NYSOPRHP-GIS Unit, December 2010



Designated Carriage Roads	
Trail ID	Name
AF	Awosting Falls
BC	Beacon Hill
CP	Castle Point
HP	Hamilton Point
HC	High Point
LC	Lake Awosting
LM	Lake Minnewaska
LA	Lower Awosting
MC	Millbrook Mountain
SC	Smiley
SK	Stony Kill
SS	Sunset
UA	Upper Awosting

Designated Hiking Trails	
Trail ID	Name
BH	Beacon Hill
BP	Berry Picker
BR	Blueberry Run
BW	Bull Wheel
GN	Gertrudes Nose
HPK	High Peters Kill
HT	High Point
IR	Indian Rock
JL	Jenny Lane
MM	Millbrook Mountain
MG	Mossy Glen
OM	Old Minnewaska
RF	Rainbow Falls
RL	Red Loop
ST	Scenic Trail
SG	Spruce Glen
VK	Verkeerder Kill Falls
YC	Yellow Connector
WJ	Wolf Jaw Connector

Assessment Legend

- Additional Comments
- Culvert
- Bridge
- Feature Contains Photograph

Note: Trail assessments conducted August - November 2009

Legend

- Parking
- Foot Path
- Carriage Road
- Woods Road
- Undesignated Foot Path
- Roads
- Powerlines
- 50' Contour Line
- Stream
- State Park Preserve
- DEC Land
- Mohonk Preserve
- Water

Culverts, Bridges and Additional Comments
Map B - Southeast
Minnewaska State Park Preserve
Map produced by NYSOPRHP-GIS Unit, December 2010



Figure 11

Legend

- Parking
- Foot Path
- Carriage Road
- Woods Road
- Undesignated Foot Path
- Roads
- Powerlines
- 50' Contour Line
- Stream
- Water
- State Park Preserve
- DEC Land
- Mohonk Preserve

Assessment Legend

- Additional Comments
- Culvert
- Bridge

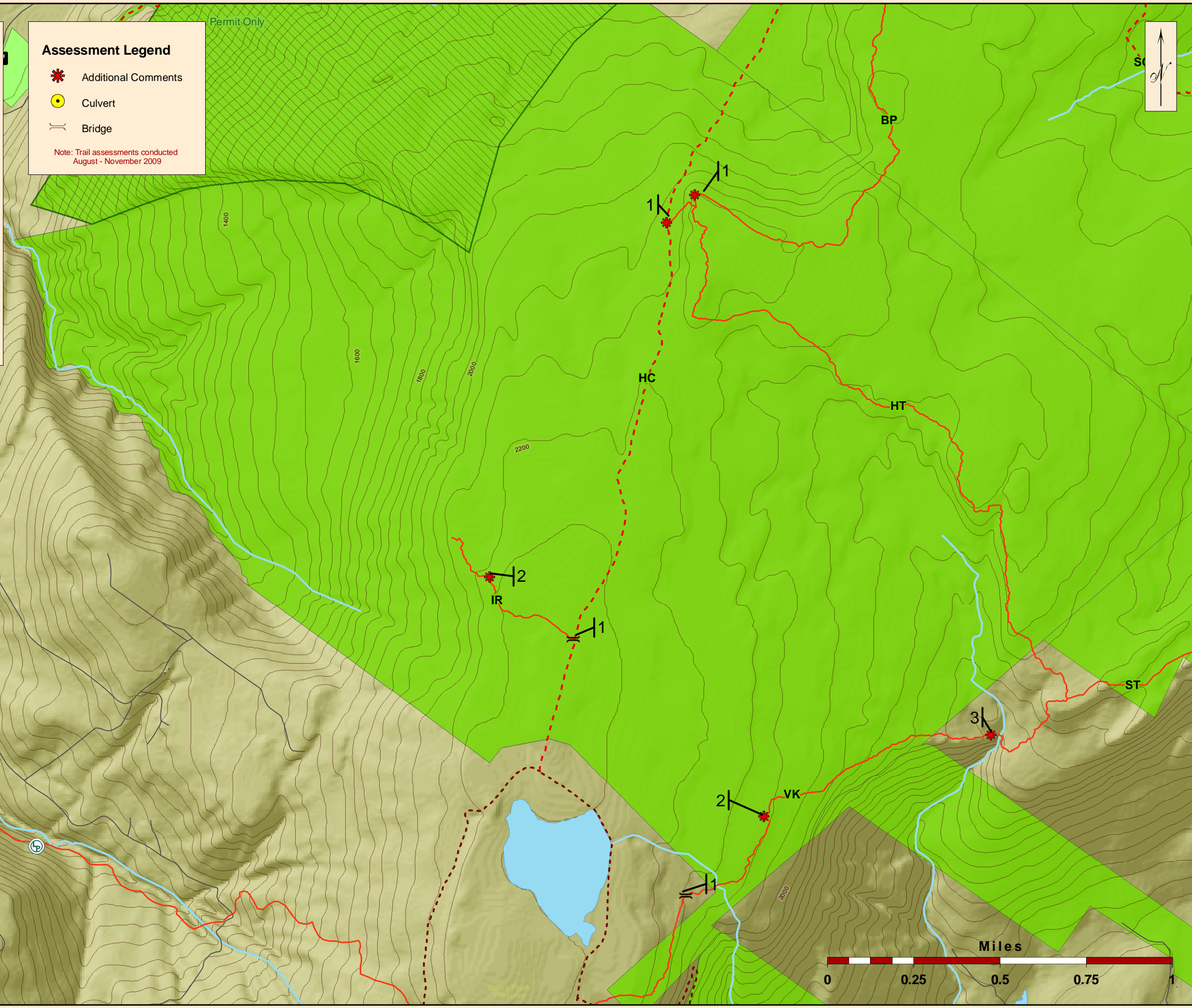
Note: Trail assessments conducted August - November 2009

Designated Hiking Trails

Trail ID	Name
BH	Beacon Hill
BP	Berry Picker
BR	Blueberry Run
BW	Bull Wheel
GN	Gertrudes Nose
HPK	High Peters Kill
HT	High Point
IR	Indian Rock
JL	Jenny Lane
MM	Millbrook Mountain
MG	Mossy Glen
OM	Old Minnewaska
RF	Rainbow Falls
RL	Red Loop
ST	Scenic Trail
SG	Spruce Glen
VK	Verkeerder Kill Falls
YC	Yellow Connector
WJ	Wolf Jaw Connector

Designated Carriage Roads

Trail ID	Name
AF	Awosting Falls
BC	Beacon Hill
CP	Castle Point
HP	Hamilton Point
HC	High Point
LC	Lake Awosting
LM	Lake Minnewaska
LA	Lower Awosting
MC	Millbrook Mountain
SC	Smiley
SK	Stony Kill
SS	Sunset
UA	Upper Awosting

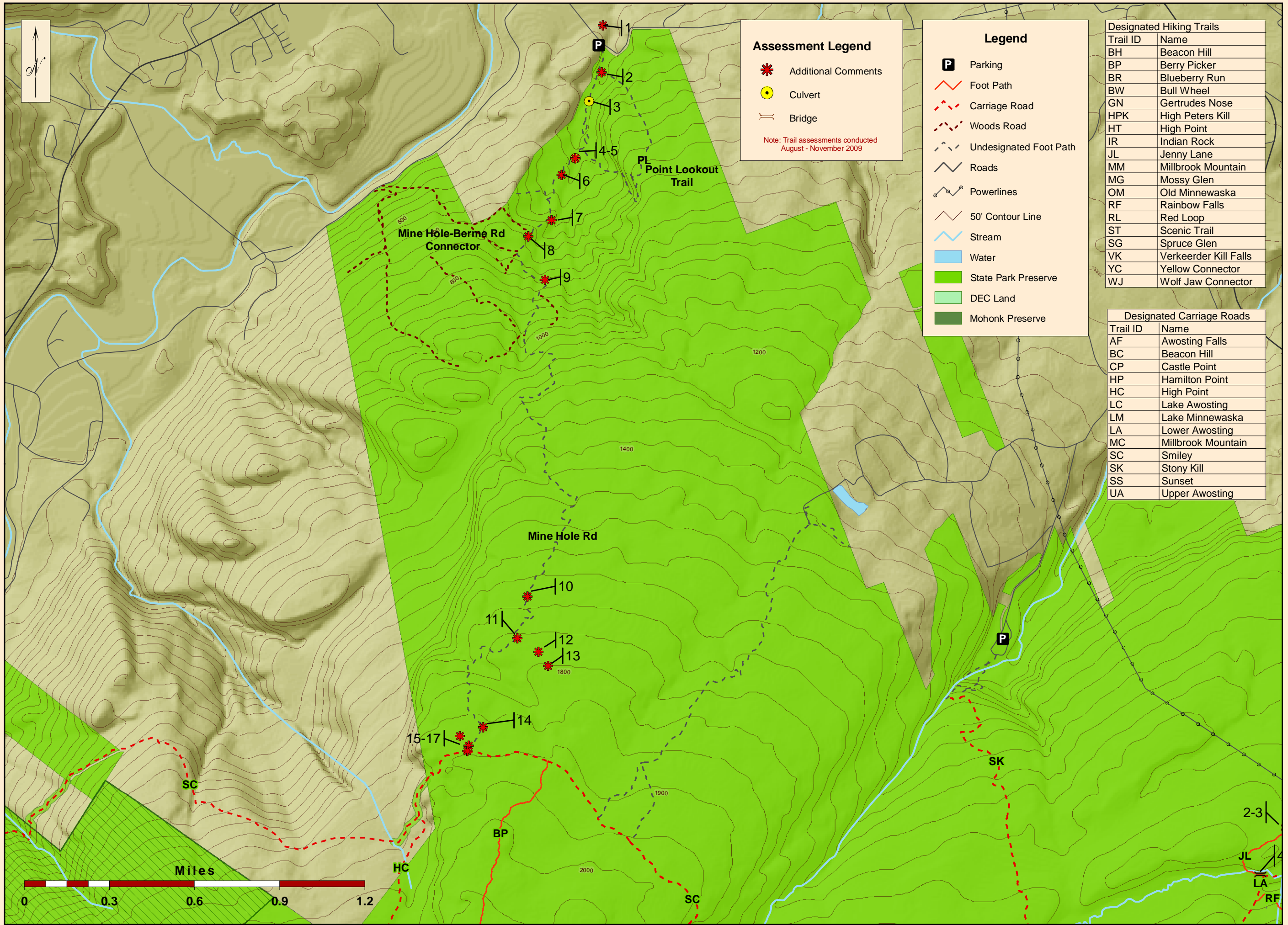


Culverts, Bridges and Additional Comments
Map C - Southwest
Minnewaska State Park Preserve

Map produced by NYSOPRHP-GIS Unit, December 2010



Figure 12



Assessment Legend

- Additional Comments
- Culvert
- Bridge

Note: Trail assessments conducted August - November 2009

Legend

- Parking
- Foot Path
- Carriage Road
- Woods Road
- Undesignated Foot Path
- Roads
- Powerlines
- 50' Contour Line
- Stream
- Water
- State Park Preserve
- DEC Land
- Mohonk Preserve

Designated Hiking Trails	
Trail ID	Name
BH	Beacon Hill
BP	Berry Picker
BR	Blueberry Run
BW	Bull Wheel
GN	Gertrudes Nose
HPK	High Peters Kill
HT	High Point
IR	Indian Rock
JL	Jenny Lane
MM	Millbrook Mountain
MG	Mossy Glen
OM	Old Minnewaska
RF	Rainbow Falls
RL	Red Loop
ST	Scenic Trail
SG	Spruce Glen
VK	Verkeerder Kill Falls
YC	Yellow Connector
WJ	Wolf Jaw Connector

Designated Carriage Roads	
Trail ID	Name
AF	Awosting Falls
BC	Beacon Hill
CP	Castle Point
HP	Hamilton Point
HC	High Point
LC	Lake Awosting
LM	Lake Minnewaska
LA	Lower Awosting
MC	Millbrook Mountain
SC	Smiley
SK	Stony Kill
SS	Sunset
UA	Upper Awosting

Culverts, Bridges and Additional Comments
Map D - Northwest
Minnewaska State Park Preserve

Figure 13

Map produced by NYSOPRHP-GIS Unit, December 2010

