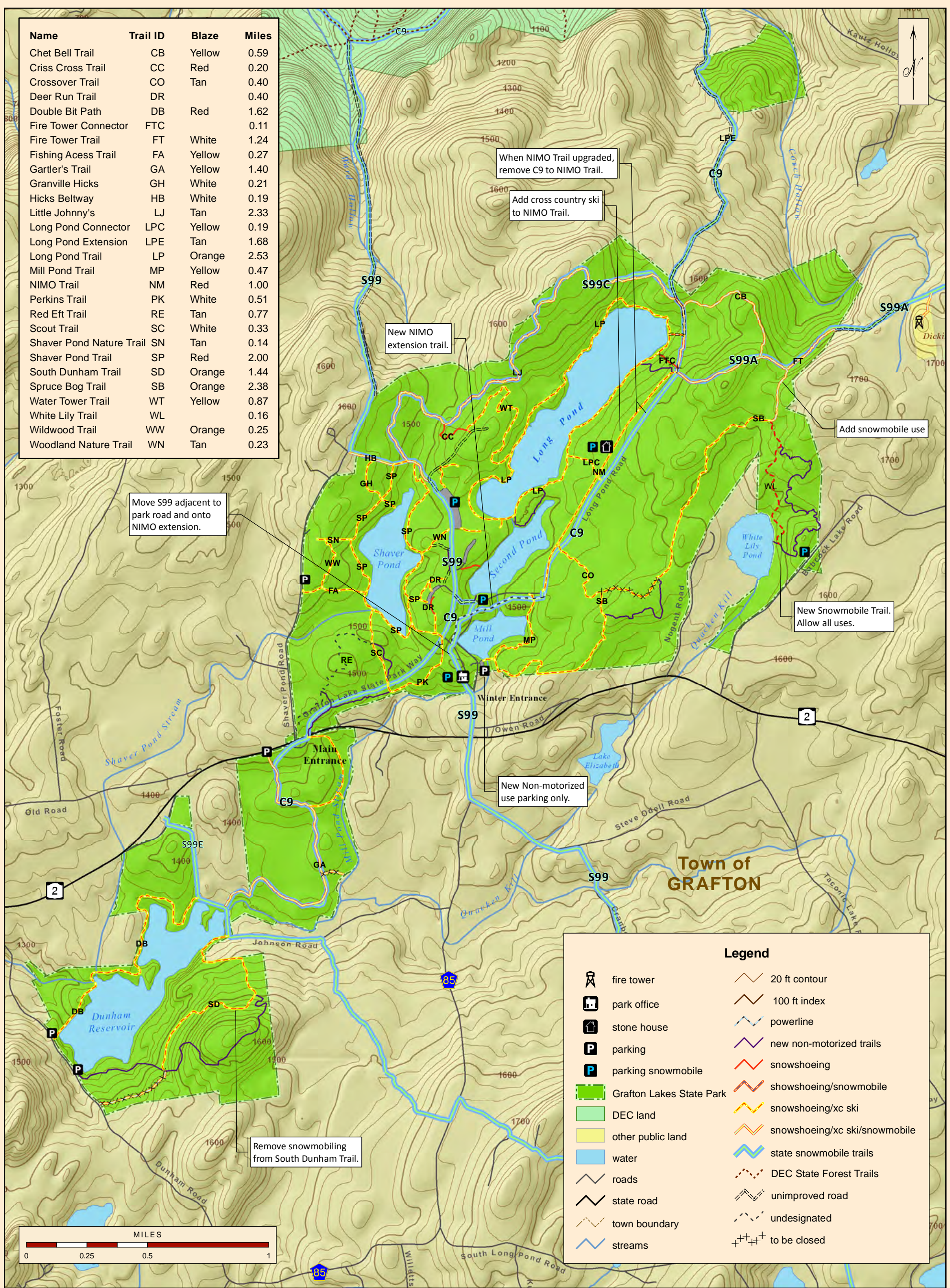


Name	Trail ID	Blaze	Miles
Chet Bell Trail	CB	Yellow	0.59
Criss Cross Trail	CC	Red	0.20
Crossover Trail	CO	Tan	0.40
Deer Run Trail	DR	Red	0.40
Double Bit Path	DB	Red	1.62
Fire Tower Connector	FTC	White	0.11
Fire Tower Trail	FT	White	1.24
Fishing Access Trail	FA	Yellow	0.27
Gartler's Trail	GA	Yellow	1.40
Granville Hicks	GH	White	0.21
Hicks Beltway	HB	White	0.19
Little Johnny's	LJ	Tan	2.33
Long Pond Connector	LPC	Yellow	0.19
Long Pond Extension	LPE	Tan	1.68
Long Pond Trail	LP	Orange	2.53
Mill Pond Trail	MP	Yellow	0.47
NIMO Trail	NM	Red	1.00
Perkins Trail	PK	White	0.51
Red Eft Trail	RE	Tan	0.77
Scout Trail	SC	White	0.33
Shaver Pond Nature Trail	SN	Tan	0.14
Shaver Pond Trail	SP	Red	2.00
South Dunham Trail	SD	Orange	1.44
Spruce Bog Trail	SB	Orange	2.38
Water Tower Trail	WT	Yellow	0.87
White Lily Trail	WL	Orange	0.16
Wildwood Trail	WW	Orange	0.25
Woodland Nature Trail	WN	Tan	0.23



Move S99 adjacent to park road and onto NIMO extension.

When NIMO Trail upgraded, remove C9 to NIMO Trail.

Add cross country ski to NIMO Trail.

New NIMO extension trail.

Add snowmobile use

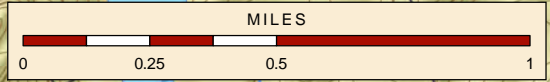
New Snowmobile Trail. Allow all uses.

New Non-motorized use parking only.

Remove snowmobiling from South Dunham Trail.

**Legend**

- fire tower
- park office
- stone house
- parking
- parking snowmobile
- Grafton Lakes State Park
- DEC land
- other public land
- water
- roads
- state road
- town boundary
- streams
- 20 ft contour
- 100 ft index
- powerline
- new non-motorized trails
- snowshoeing
- showshoeing/snowmobile
- snowshoeing/xc ski
- snowshoeing/xc ski/snowmobile
- state snowmobile trails
- DEC State Forest Trails
- unimproved road
- undesignated
- to be closed



# Trail Alternatives-Winter Trail System

## Grafton Lakes State Park

### Trails Plan

Figure 9

Map produced by NYSOPRHP-GIS Unit, December 20, 2011.