



**Final Master Plan and
Final Environmental Impact Statement for
Clermont State Historic Site
Town of Clermont, Columbia County**

Appendices

July 26, 2023

APPENDICES

Figures

Figure 1	Location Map
Figure 2	Boundary and Topography
Figure 3	Adjacent Land Use
Figure 4	Surficial Geology
Figure 5	Bedrock Geology
Figure 6	Watershed
Figure 7	Water Resources
Figure 8	Soils
Figure 9	Ecological Communities
Figure 10	Recreational Resources
Figure 11	Existing Trails Map
Figure 11a	Trails Conditions Assessment
Figure 11b	Trails Alternatives
Figure 12	Master Plan Map (insert)

Appendices

Appendix A	Historic/Non-Historic Designations for Existing Buildings
Appendix B	Flora Species List
Appendix C	Fauna Species List
Appendix D	OPRHP Tree Removal Policy
Appendix E	Existing Site Infrastructure
Appendix F	Solar Development Concept Plan
Appendix G	Clermont Hunting Map
Appendix H	NYS Coastal Assessment Form

Figure 1 – Park Location Map

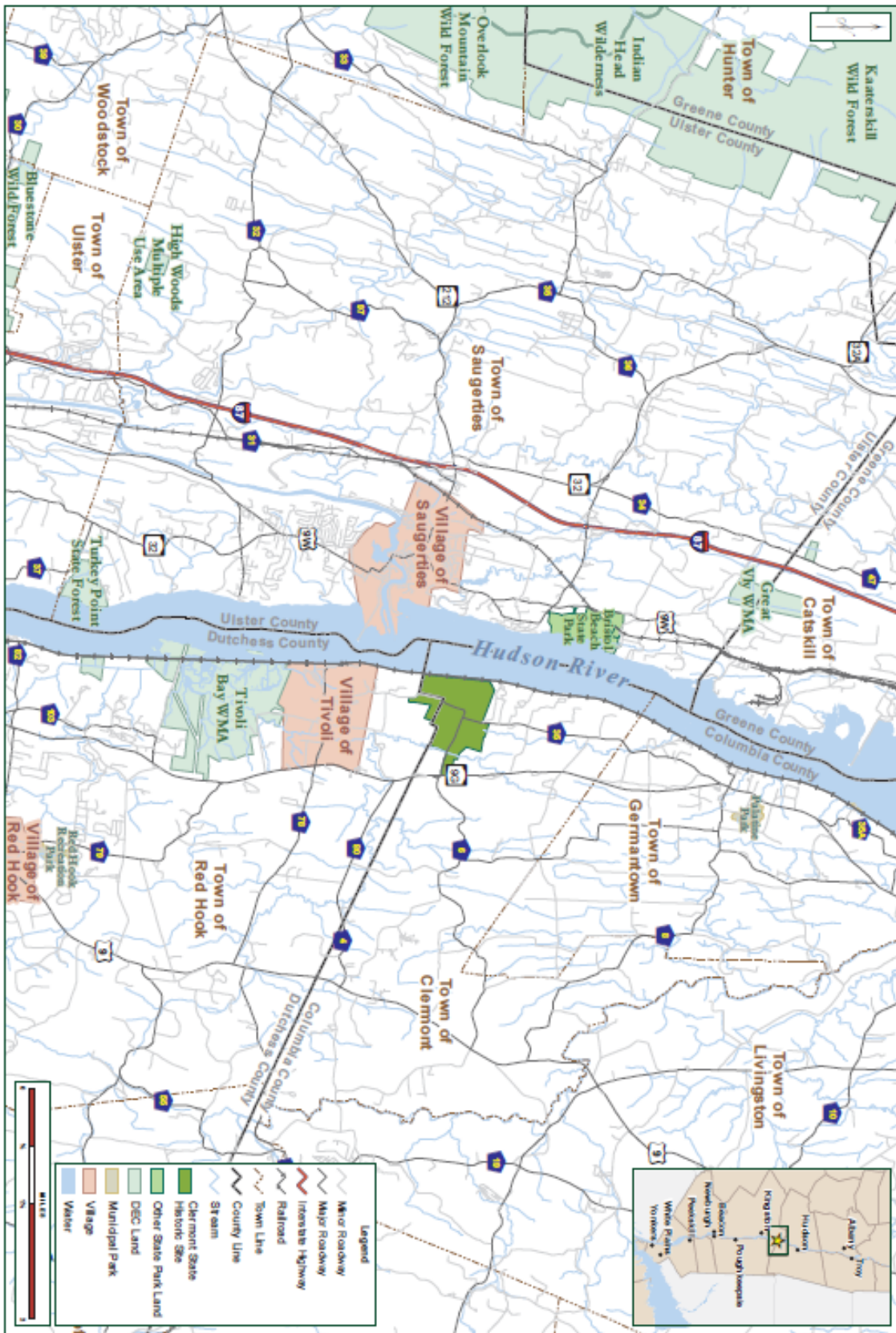


Figure 01 - Site Location

Clermont State Historic Site

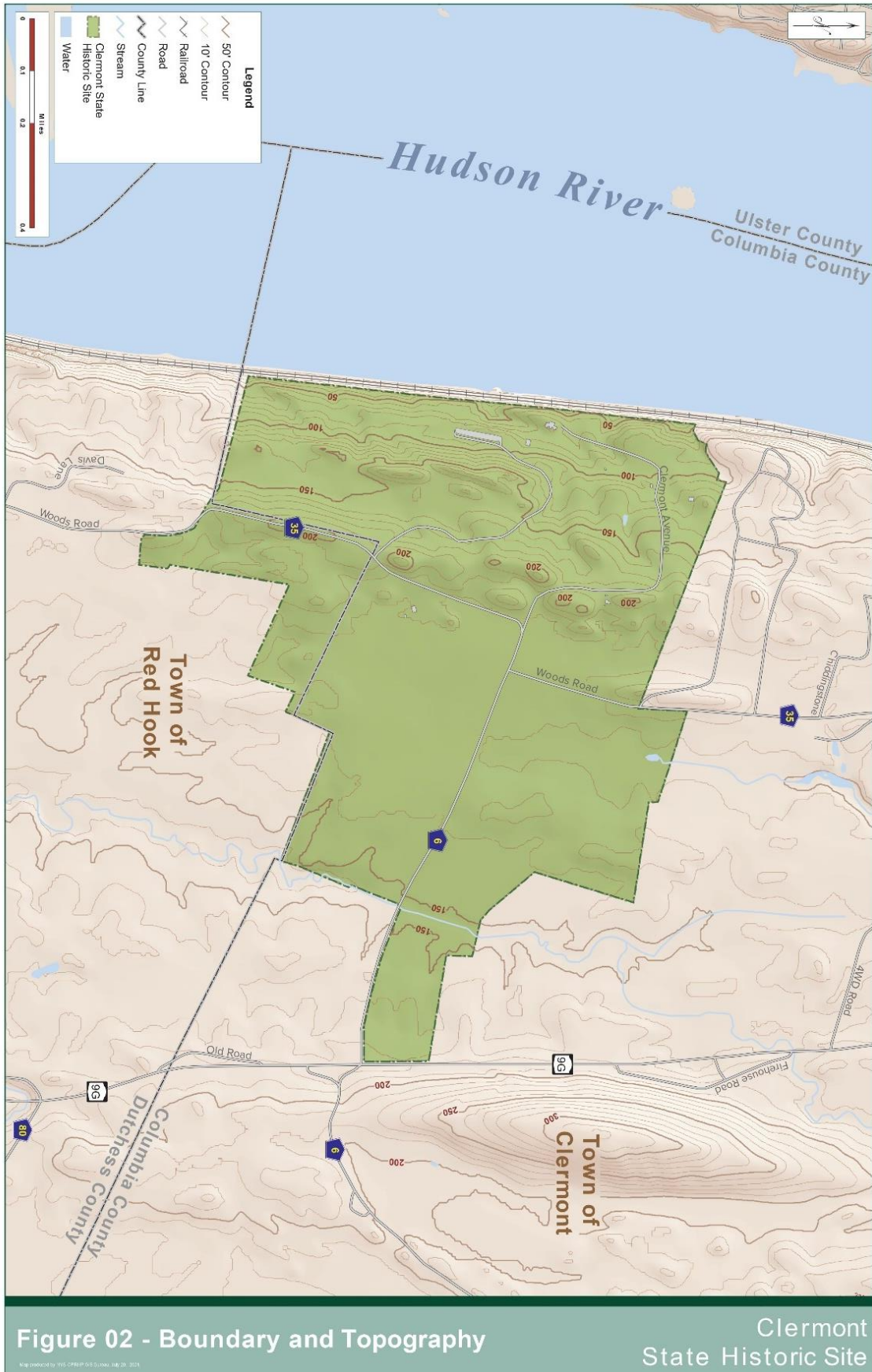


Figure 3 – Adjacent Land Use

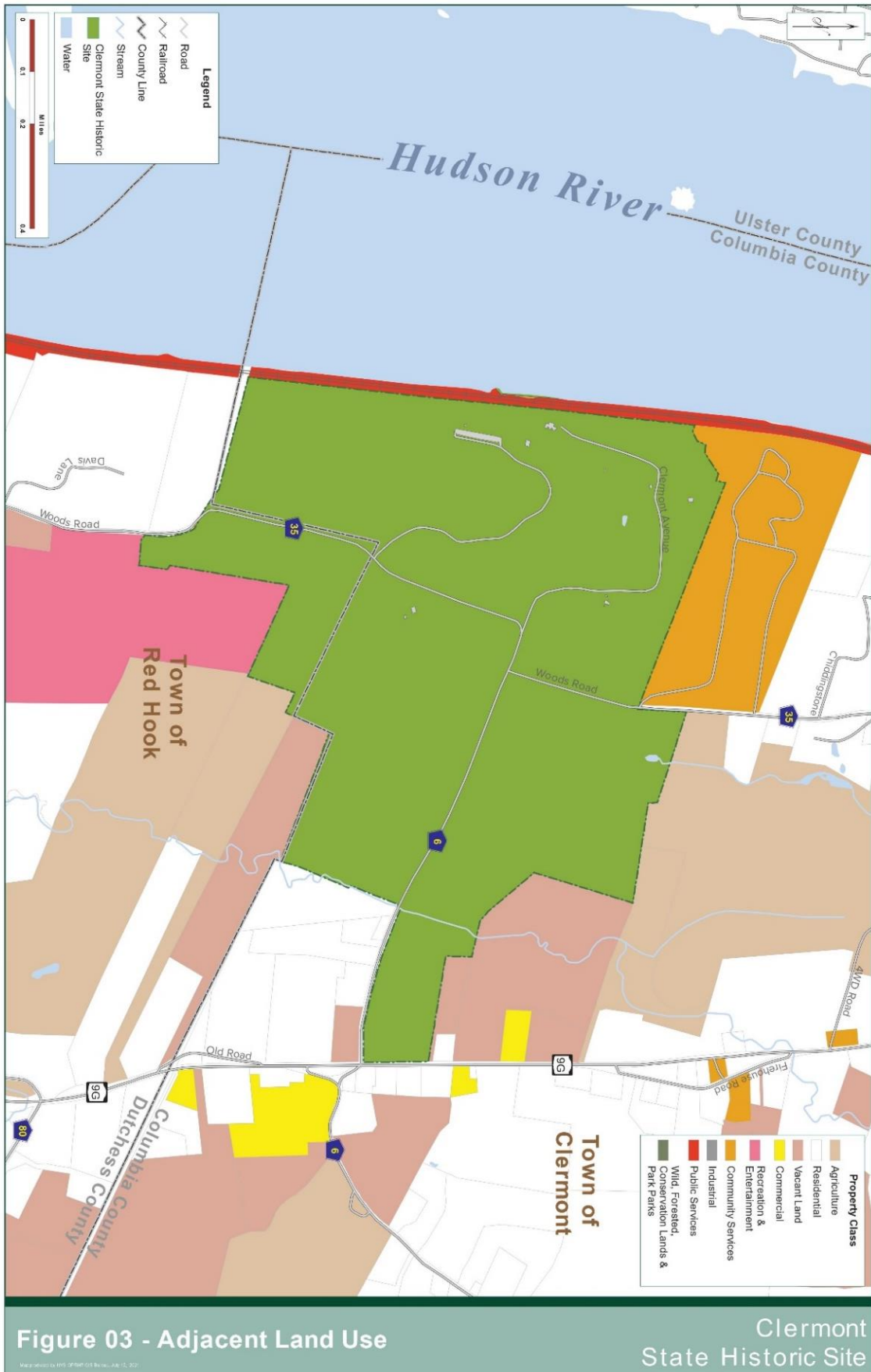


Figure 4 –Surfacial Geology

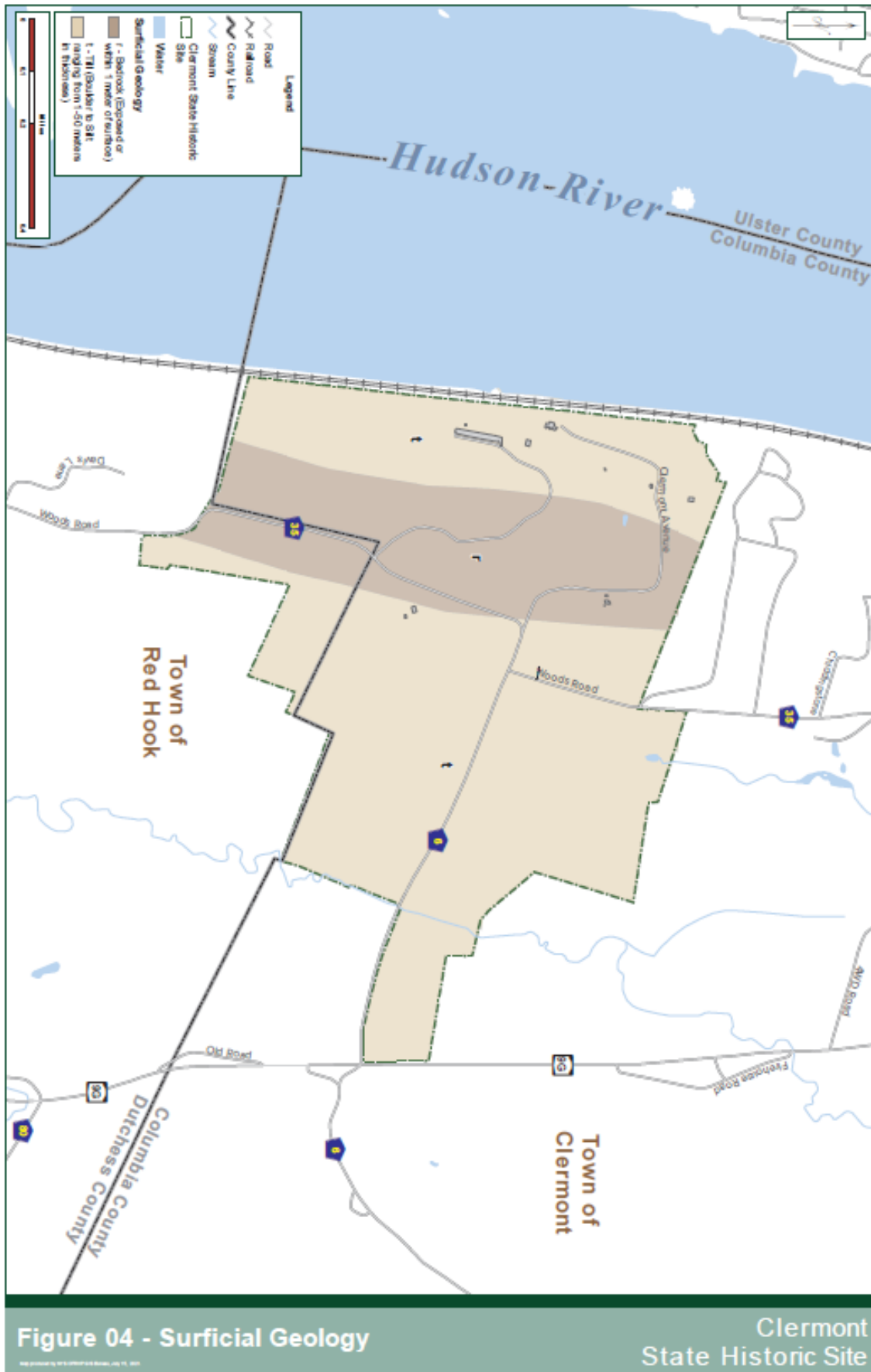


Figure 04 - Surficial Geology

Clermont
State Historic Site

Figure 5 – Bedrock Geology

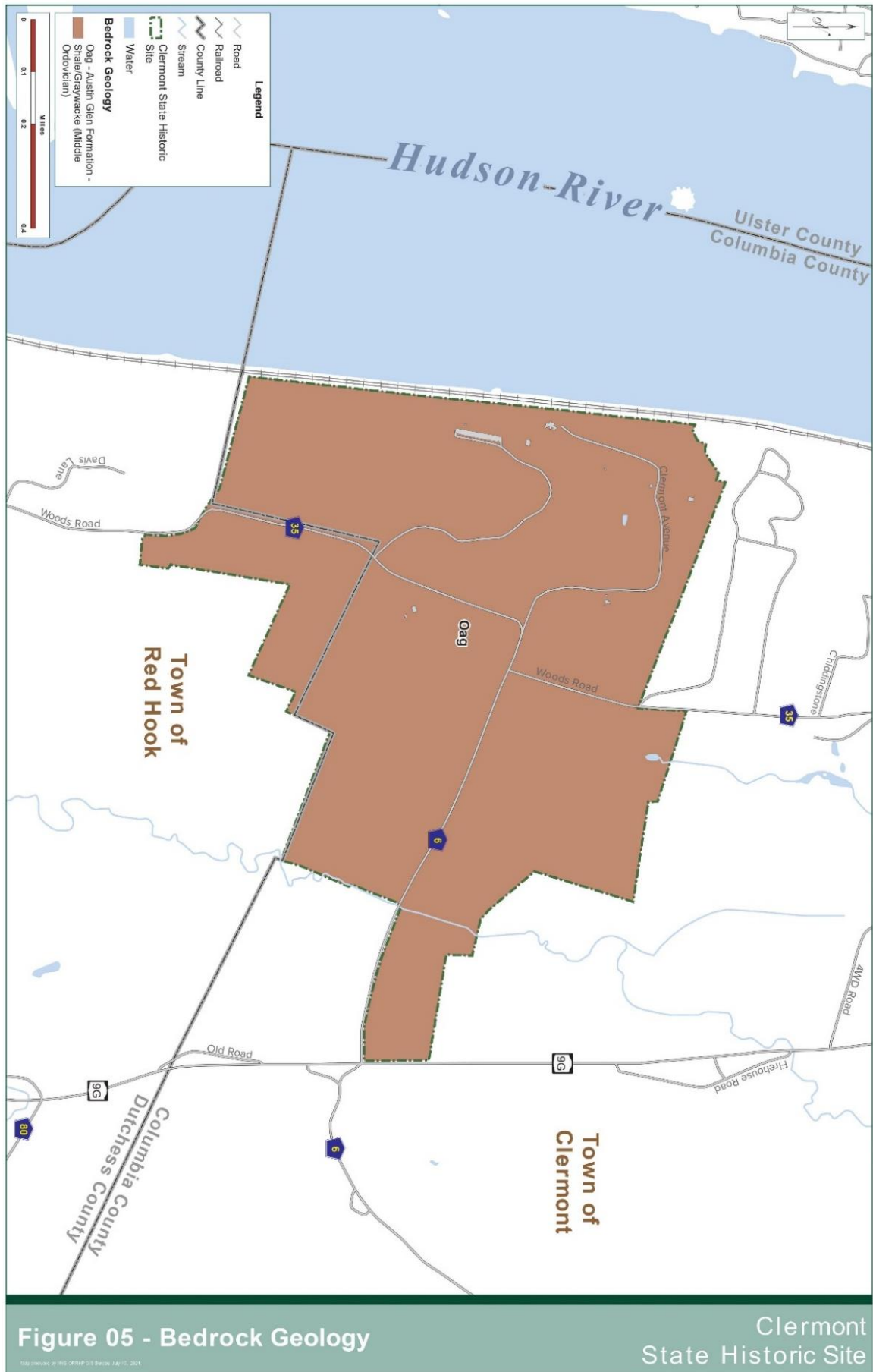


Figure 6 – Watershed

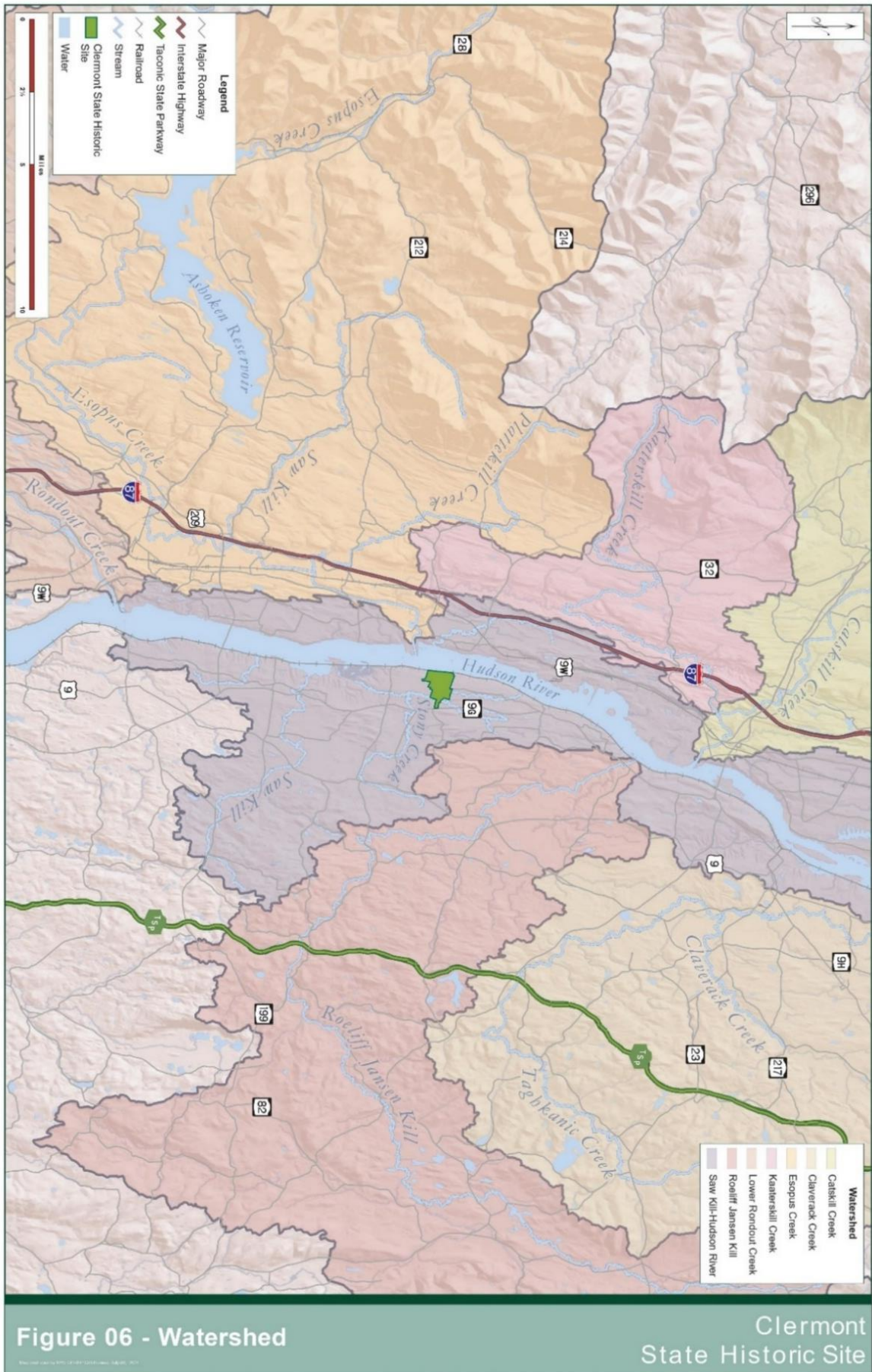


Figure 7 –Water Resources

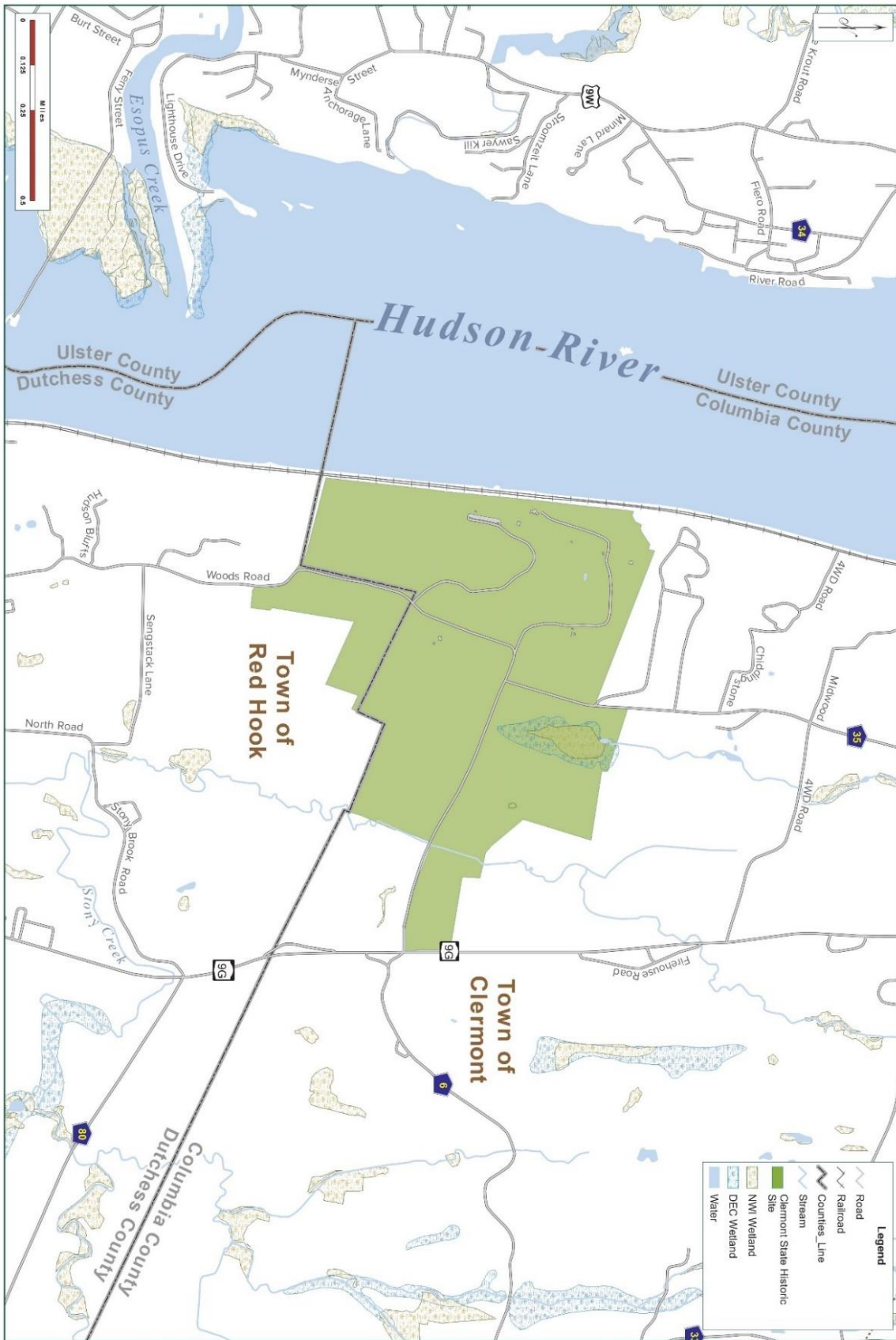


Figure 07 - Water Resources

Clermont State Historic Site

Figure 9 — Ecological Communities

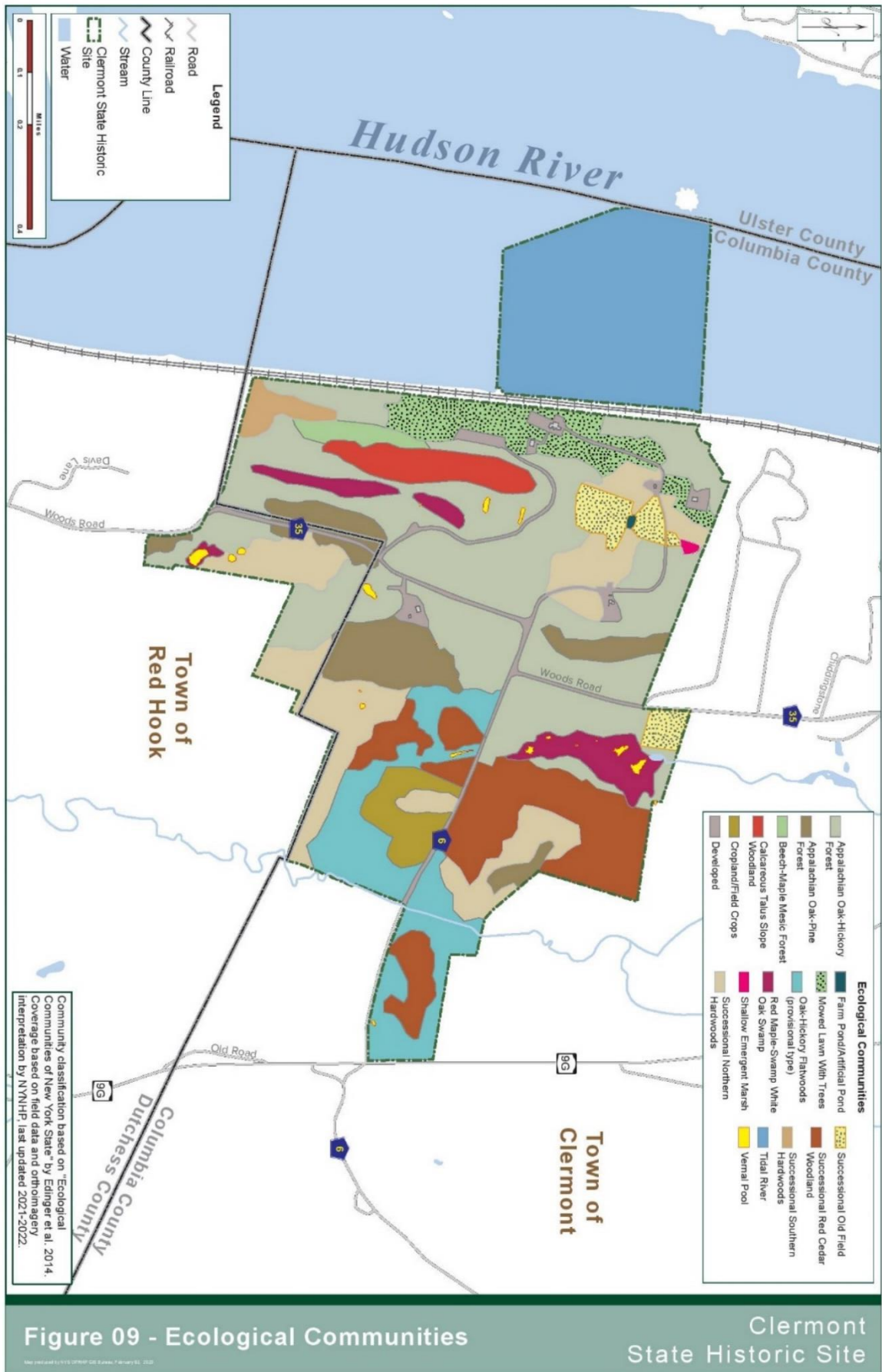


Figure 10 – Recreational Resources



Figure 10 - Recreational Resources

Clermont State Historic Site

Figure 11 – Existing Trails Map

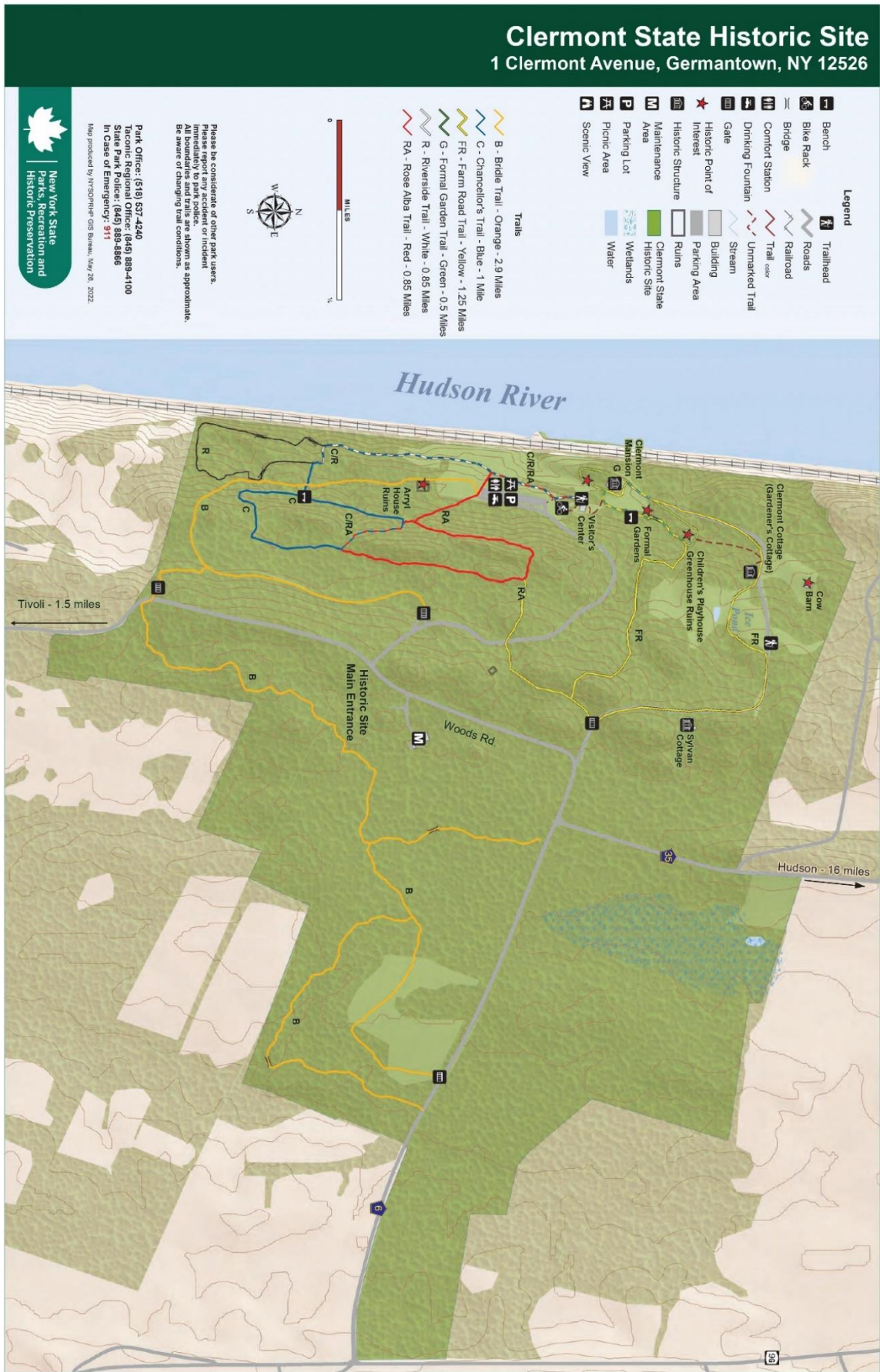


Figure 11a – Trails Conditions Assessment



Figure 11b – Trails Alternatives Map

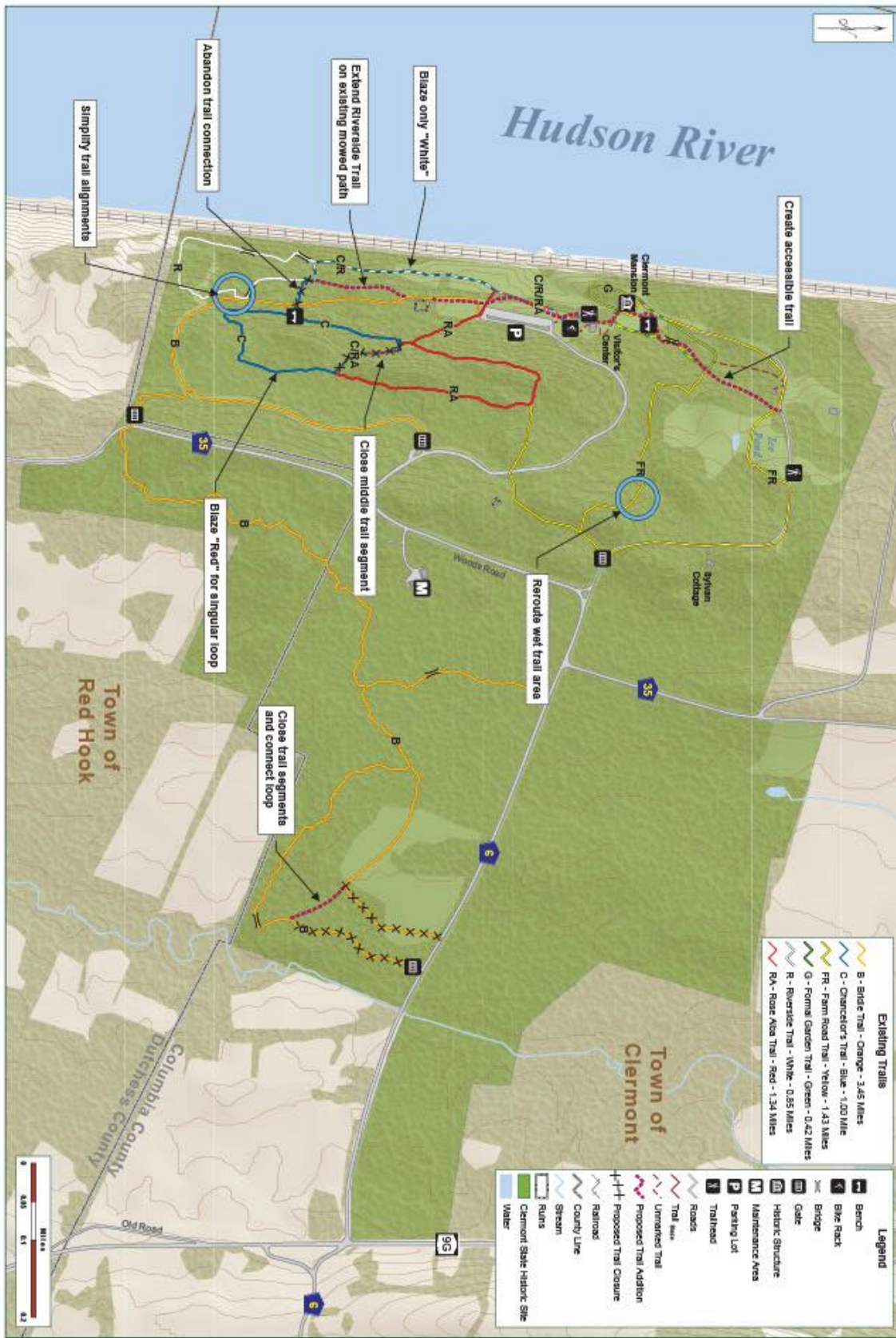


Figure 12 - Trail Alternatives

Clermont State Historic Site

Appendix A – Historic/Non-Historic Designations for Existing Buildings

Clermont SHS/Building, Structure and Landscape Feature List

Clermont State Historic Site’s boundary corresponds with three distinct historic designations. The first is a 1971 National Historic Landmark designation for Clermont, the boundary consisting of the site’s southern two-thirds; the associated documentation is poor and fails to itemize what features are considered historic/contributing. The second designation is the 1979-80 State and National Register of Historic Places-listed Clermont Estates Historic District; the northern third of the site is contained within this boundary and includes three historic/contributing Clermont features. Lastly, all of the site is contained within the 1990 Hudson River Historic District National Historic Landmark; the period of significance for that district is 1688-1940. All extant historic features pre-dating 1940 are generally considered historic/contributing to that district, provided they maintain sufficient physical integrity to portray relevant nomination themes; more recent features, such as the ca. 1970 public restroom and maintenance infrastructure, are not classified as historic/contributing.

The following list consists of buildings and structures, along with landscape features that have built components; archaeological sites have been excluded, excepting those that still exist in a visible but ruinous state. Resources include both the State Financial System (SFS) asset number, where applicable, and the Unique Site Number (USN), which is the number assigned to resources within the state’s Cultural Resource Information System, or CRIS. Dates of construction, or date ranges, are provided where known.

Abbreviations: NC (non-contributing); R (ruinous); R/F (ruinous; foundation only).

Resource Name	SFS Asset #	Date	Historic Status
Clermont House	04BR03200100	ca. 1740-50; ca. 1783 & later	Historic/contributing
Arryl House/Idele	N/A	ca. 1790s	Historic/contributing [R]
Clermont Cottage	04BR03201100	ca. 1790-1810 & later	Historic/contributing
Sylvan Cottage	04BR03201500	ca. 1790-1810 & later	Historic/contributing
Playhouse	04BR03200500	ca. 1911-13	Historic/contributing
Carriage Barn	VC 04BR03200200	ca. 1850-60; ca. 1875 & later	Historic/contributing
Red/Cow Barn	04BR03201300	ca. 1890-1900	Historic/contributing
Ice House	N/A	ca. 1790-1810	Historic/contributing [R/F]
Root Cellar	N/A	ca. 1790-1810	Historic/contributing [R/F]
East Lawn	N/A	ca. 1920s-30s	Historic/contributing
Walled garden	N/A	ca. 1920s-30s	Historic/contributing
Lilac Walk	N/A	1820s; ca. 1920s	Historic/contributing
Greenhouse/Shed	N/A	ca. 1912	Historic/contributing [R]
Entrance Piers/Wall	N/A	ca. 1850-75	Historic/contributing
Pump House (Barn)	04BR03201400	pre-1940	Historic/contributing
Auto Garage (Sylvan)	04BR03201600	pre-1940	Historic/contributing
Well House (Sylvan)	04BR03201700	ca. 1800	Historic/contributing
Maintenance Garage	04BR03200900	ca. 1985	Non-historic/NC
Fueling Station	N/A	ca. 1985	Non-historic/NC
Maintenance Storage	04BR03200800	ca. 1985	Non-historic/NC
Maintenance Shed	N/A	ca. 1985	Non-historic/NC [R]
HVAC Bunker	04BR03201000	ca. 1982	Non-historic/NC
Contact Station	N/A	post-1940	Non-historic/NC
Public Restroom	04BR03200300	ca. 1969	Non-historic/NC

Appendix B – Flora Species List

Common Name	Scientific Name
Swamp Milkweed	<i>Asclepias incarnata</i>
Purple Loosestrife	<i>Lythrum salicaria</i>
Common Reed	<i>Phragmites australis</i>
Black Swallowwort	<i>Vincetoxicum nigrum</i>
Narrow-leaved Cattail	<i>Typha angustifolia</i>
Common Milkweed	<i>Asclepias syriaca</i>
Narrow-leaved Mountain Mint	<i>Pycnanthemum tenuifolium</i>
Multiflora Rose	<i>Rosa multiflora</i>
Black Walnut	<i>Juglans nigra</i>
Black Locust	<i>Robinia pseudoacacia</i>
Magnolia sp. (ornamental, probably saucer)	<i>Magnolia</i> sp. (probably <i>Magnolia denudata</i> x <i>M. liliiflora</i>)
Queen Anne's Lace	<i>Daucus carota</i>
Spotted Knapweed	<i>Centaurea stoebe</i> ssp. <i>micranthos</i>
Yarrow (likely common yarrow)	<i>Achillea</i> sp. (likely <i>A. millefolium</i>)
Japanese Stiltgrass	<i>Microstegium vimineum</i>
Flat-topped Goldenrod?	<i>Solidago</i> sp.
Sensitive Fern	<i>Onoclea sensibilis</i>
Japanese Barberry	<i>Berberis thunbergii</i>
Dogbane sp.	<i>Apocynum androsaemifolium</i>
Shagbark Hickory	<i>Carya ovata</i>
Fleabane Daisy sp.	<i>Erigeron</i> sp.
Sycamore	<i>Platanus occidentalis</i>
Bedstraw sp.	<i>Galium</i> sp.
Bottlebrush Grass	<i>Elymus hystrix</i>
Autumn Olive	<i>Elaeagnus umbellata</i>
Oriental Bittersweet	<i>Celastrus orbiculatus</i>
Poison Ivy	<i>Toxicodendron radicans</i>
Virginia Creeper	<i>Parthenocissus quinquefolia</i>
Virgin's Bower	<i>Clematis virginiana</i>
Red Maple	<i>Acer rubrum</i>
White Pine	<i>Pinus strobus</i>
Tree of Heaven	<i>Ailanthus altissima</i>
Trumpet Creeper	<i>Campsis radicans</i>
Maidenhair Fern	<i>Adiantum pedatum</i>
Greater Celandine	<i>Chelidonium majus</i>
Ground Ivy	<i>Glechoma heracea</i>
5-leaved Aralia?	<i>Eleutherococcus sieboldianus</i>
Common Yellow Wood Sorrel	<i>Oxalis stricta</i>
Burdock	<i>Arctium</i> sp.
Black Raspberry	<i>Rubus occidentalis</i>
Common White Snakeroot	<i>Ageratina altissima</i>
Grape sp.	<i>Vitis</i> sp.
Common Wild Bergamot	<i>Monarda fistulosa</i>
Ragweed	<i>Ambrosia</i> sp.

Indian Tobacco	<i>Lobelia inflata</i>
Spicebush	<i>Lindera benzoin</i>
Border Privet	<i>Ligustrum obtusifolium</i>
Norway Spruce	<i>Picea abies</i>
White Clover	<i>Trifolium repens</i>
Tulip Poplar	<i>Liriodendron tulipifera</i>
Tick Trefoil	<i>Desmodium</i> sp. OR <i>Hylodesmum</i> sp.
Forsythia	<i>Forsythia</i> sp.
Jewelweed sp.	<i>Impatiens</i> sp.
Pokeweed	<i>Phytolacca americana</i> var. <i>americana</i>
Mock Orange? Opposite branching	<i>Philadelphus</i> sp.
Catalpa	<i>Catalpa</i> sp.
Japanese Honeysuckle	<i>Lonicera japonica</i>
Wild Black Cherry	<i>Prunus serotina</i> var. <i>serotina</i>
Plantain sp.	depends on species

Appendix C – Fauna Species List

Fauna - Clermont State Historic Site			
	Scientific Name	Common Name	Potentially There, not confirmed
MAMMALS			
Bats	<i>Eptesicus fuscus</i>	Big Brown Bat	Y
	<i>Lasionycteris noctivagans</i>	Silver-haired Bat	Y
	<i>Lasiurus borealis</i>	Eastern Red Bat	Y
	<i>Lasiurus cinereus</i>	Hoary Bat	Y
	<i>Myotis lucifugus</i>	Little Brown Bat	Y
Rabbits and Hares	<i>Sylvilagus floridanus</i>	Eastern Cottontail	
Rodents	<i>Blarina brevicauda</i>	Short-tailed Shrew	Y?
	<i>Marmota monax</i>	Woodchuck	
	<i>Microtus pennsylvanicus</i>	Meadow Vole	Y?
	<i>Ondatra zibethicus</i>	Muskrat	
	<i>Peromyscus leucopus</i>	White-footed Mouse	
	<i>Sciurus carolinensis</i>	Eastern Gray Squirrel	
	<i>Tamias striatus</i>	Eastern Chipmunk	
Carnivores	<i>Canis latrans</i>	Eastern Coyote	
	<i>Didelphis virginiana</i>	Virginia Opossum	
	<i>Lynx rufus</i>	Bobcat	
	<i>Mephitis mephitis</i>	Striped Skunk	
	<i>Mustela frenata</i>	Long-tailed Weasel	Y?
	<i>Neovison vison</i>	American Mink	?
	<i>Procyon lotor</i>	Raccoon	
	<i>Ursus americanus</i>	American Black Bear	
	<i>Vulpes vulpes</i>	Red Fox	
Even-toed Ungulates	<i>Odocoileus virginianus</i>	White-tailed Deer	
BIRDS			
Hérons, Ibis, and Allies	<i>Ardea alba</i>	Great Egret	
	<i>Ardea herodias</i>	Great Blue Heron	
	<i>Botaurus lentiginosus</i>	American Bittern	
	<i>Butorides virescens</i>	Green Heron	
Swans and Geese	<i>Branta bernicla</i>	Brant	
	<i>Branta canadensis</i>	Canada Goose	
	<i>Chen caerulescens</i>	Snow Goose	
	<i>Cygnus olor</i>	Mute Swan	
Dabbling Ducks	<i>Aix svonsa</i>	Wood Duck	
	<i>Anas acuta</i>	Northern Pintail	
	<i>Anas carolinensis</i>	Green-winged Teal	
	<i>Anas discors</i>	Blue-winged Teal	
	<i>Anas platyrhynchos</i>	Mallard	
	<i>Anas rubripes</i>	American Black Duck	

cont.

Diving Ducks	<i>Aythya affinis</i>	Lesser Scaup	
	<i>Aythya collaris</i>	Ring-necked Duck	
	<i>Aythya valisineria</i>	Canvasback	
	<i>Bucephala albeola</i>	Bufflehead	
	<i>Bucephala clangula</i>	Common Goldeneye	
	<i>Melanitta deglandi</i>	White-winged Scoter	
	<i>Melanitta nigra</i>	Black Scoter	
	<i>Mergus mergansus</i>	Common Merganser	
	<i>Mergus serrator</i>	Red-breasted Merganser	
Pelicans and Cormorants	<i>Phalacrocorax auritus</i>	Double-crested Cormorant	
Diurnal Raptors	<i>Accipiter cooperii</i>	Cooper's Hawk	
	<i>Accipiter striatus</i>	Sharp-shinned Hawk	
	<i>Buteo jamaicensis</i>	Red-tailed Hawk	
	<i>Buteo lineatus</i>	Red-shouldered Hawk	
	<i>Buteo platypterus</i>	Broad-winged Hawk	
	<i>Cathartes aura</i>	Turkey Vulture	
	<i>Circus cyaneus</i>	Northern Harrier	
	<i>Coragyps atratus</i>	Black Vulture	
	<i>Haliaeetus leucocephalus</i>	Bald Eagle	
	<i>Pandion haliaetus</i>	Osprey	
Upland Game Birds	<i>Meleagris gallopavo</i>	Wild Turkey	
	<i>Phasianus colchicus</i>	Ring-necked Pheasant	
Rails, Gallinules, and Allies	<i>Fulica americana</i>	American Coot	
Shorebirds	<i>Actitis macularius</i>	Spotted Sandpiper	
	<i>Charadrius vociferus</i>	Killdeer	
	<i>Scolopax minor</i>	American Woodcock	
Skuas, Jaegers, Gulls	<i>Larus delawarensis</i>	Ring-billed Gull	
	<i>Larus marinus</i>	Great Black-backed Gull	
	<i>Larus smithsonianus</i>	American Herring Gull	
Pigeons and Doves	<i>Columba livia</i>	Rock Pigeon	
	<i>Zenaida macroura</i>	Mourning Dove	
Cuckoos	<i>Coccyzus americanus</i>	Yellow-billed Cuckoo	
	<i>Coccyzus erythrophthalmus</i>	Black-billed Cuckoo	
Owls	<i>Bubo virginianus</i>	Great Horned Owl	
	<i>Otus asio</i>	Eastern Screech Owl	
	<i>Strix varia</i>	Barred Owl	
Swifts	<i>Chaetura pelagica</i>	Chimney Swift	
Hummingbirds	<i>Archilochus colubris</i>	Ruby-throated Hummingbird	
Kingfishers	<i>Megaceryle alcyon</i>	Belted Kingfisher	
Woodpeckers	<i>Drvocopus pileatus</i>	Pileated Woodpecker	
	<i>Colaptes auratus</i>	Northern Flicker	
	<i>Melanerpes carolinus</i>	Red-bellied Woodpecker	
	<i>Picoides pubescens</i>	Downy Woodpecker	
	<i>Picoides villosus</i>	Hairy Woodpecker	
	<i>Sphyrapicus varius</i>	Yellow-bellied Sapsucker	

cont.

Falcons	<i>Falco columbarius</i>	Merlin	
	<i>Falco peregrinus</i>	Peregrine Falcon	
	<i>Falco sparverius</i>	American Kestrel	
Tyrant Flycatchers	<i>Contopus cooperi</i>	Olive-sided flycatcher	
	<i>Contopus virens</i>	Eastern Wood-Pewee	
	<i>Emidonax alnorum</i>	Alder Flycatcher	
	<i>Empidonax minimus</i>	Least Flycatcher	
	<i>Empidonax traillii</i>	Willow Flycatcher	Y?
	<i>Myiarchus crinitus</i>	Great Crested Flycatcher	
	<i>Sayornis phoebe</i>	Eastern Phoebe	
	<i>Tyrannus tyrannus</i>	Eastern Kingbird	
Vireos	<i>Vireo flavifrons</i>	Yellow-throated Vireo	
	<i>Vireo gilvus</i>	Warbling Vireo	
	<i>Vireo olivaceus</i>	Red-eyed Vireo	
	<i>Vireo philadelphicus</i>	Philadelphia Vireo	
	<i>Vireo solitarius</i>	Blue-headed Vireo	
Jays and Crows	<i>Corvus brachyrhynchos</i>	American Crow	
	<i>Corvus corax</i>	Common Raven	
	<i>Cyanocitta cristata</i>	Blue Jay	
	<i>Corvus ossifragus</i>	Fish Crow	
Swallows	<i>Hirundo rustica</i>	Barn Swallow	
	<i>Tachycineta bicolor</i>	Tree Swallow	
Chickadees, Nuthatches, and Their Allies	<i>Baeolophus bicolor</i>	Tufted Titmouse	
	<i>Certhia americana</i>	Brown Creeper	
	<i>Poecile atricapilla</i>	Black-capped Chickadee	
	<i>Sitta canadensis</i>	Red-breasted Nuthatch	
	<i>Sitta carolinensis</i>	White-breasted Nuthatch	
Wrens	<i>Thryothorus ludovicianus</i>	Carolina Wren	
	<i>Troglodytes aedon</i>	House Wren	
Kinglets and Gnatcatchers	<i>Poliophtila caerulea</i>	Blue-gray Gnatcatcher	
	<i>Regulus calendula</i>	Ruby-crowned Kinglet	
	<i>Regulus satrapa</i>	Golden-crowned Kinglet	
Thrushes	<i>Sialia sialis</i>	Eastern Bluebird	
	<i>Catharus fuscescens</i>	Veery	
	<i>Catharus ustulatus</i>	Swainson's Thrush	
	<i>Catharus guttatus</i>	Hermit Thrush	
	<i>Hylocichla mustelina</i>	Wood Thrush	
	<i>Turdus migratorius</i>	American Robin	

cont.

Mimids	<i>Dumetella carolinensis</i>	Gray Catbird	
	<i>Mimus polyglottos</i>	Northern Mockingbird	
	<i>Toxostoma rufum</i>	Brown Thrasher	
Waxwings	<i>Bombycilla cedrorum</i>	Cedar Waxwing	
Starlings, Myna, and Bulbul	<i>Sturnus vulgaris</i>	European Starling	
Wood-warblers	<i>Cardellina canadensis</i>	Canada Warbler	
	<i>Cardellina pusilla</i>	Wilson's Warbler	
	<i>Dendroica discolor</i>	Prairie Warbler	
	<i>Geothlypis trichas</i>	Common Yellowthroat	
	<i>Leiothlypis peregrina</i>	Tennessee Warbler	
	<i>Leiothlypis ruficapilla</i>	Nashville Warbler	
	<i>Mniotilta varia</i>	Black-and-white Warbler	
	<i>Parkesia motacilla</i>	Louisiana Waterthrush	
	<i>Parkesia noveboracensis</i>	Northern Waterthrush	
	<i>Seiurus aurocapilla</i>	Ovenbird	
	<i>Setophaga americana</i>	Northern Parula	
	<i>Setophaga caerulescens</i>	Black-throated Blue Warbler	
	<i>Setophaga coronata</i>	Yellow-rumped Warbler	
	<i>Setophaga fusca</i>	Blackburnian Warbler	
	<i>Setophaga magnolia</i>	Magnolia Warbler	
	<i>Setophaga palmarum</i>	Palm Warbler	
	<i>Setophaga pensylvanica</i>	Chestnut-sided Warbler	
	<i>Setophaga petechia</i>	Yellow Warbler	
	<i>Setophaga pinus</i>	Pine Warbler	
	<i>Setophaga ruticilla</i>	American Redstart	
<i>Setophaga striata</i>	Blackpoll Warbler		
<i>Setophaga tigrina</i>	Cape May Warbler		
<i>Setophaga virens</i>	Black-throated Green Warbler		
<i>Vermivora cyanoptera</i>	Blue-winged Warbler		
Tanagers, Cardinals, and Their Allies	<i>Cardinalis cardinalis</i>	Northern Cardinal	
	<i>Passerina cyanea</i>	Indigo Bunting	
	<i>Pheucticus ludovicianus</i>	Rose-breasted Grosbeak	
	<i>Piranga olivacea</i>	Scarlet Tanager	
Emberzine Sparrows and Their Allies	<i>Junco hyemalis</i>	Dark-eyed Junco	
	<i>Melospiza georgiana</i>	Swamp Sparrow	
	<i>Melospiza melodia</i>	Song Sparrow	
	<i>Passerella iliaca</i>	Fox Sparrow	
	<i>Pipilo erythrophthalmus</i>	Eastern Towhee	
	<i>Spizella arborea</i>	American Tree Sparrow	
	<i>Spizella passerina</i>	Chipping Sparrow	
	<i>Spizella pusilla</i>	Field Sparrow	
<i>Zonotrichia albicollis</i>	White-throated Sparrow		
<i>Zonotrichia leucophrys</i>	White-crowned Sparrow		

cont.

Icterids	<i>Agelaius phoeniceus</i>	Red-winged Blackbird	
	<i>Dolichonyx oryzivorus</i>	Bobolink	
	<i>Icterus galbula</i>	Baltimore Oriole	
	<i>Icterus spurius</i>	Orchard Oriole	
	<i>Molothrus ater</i>	Brown-headed Cowbird	
	<i>Quiscalus quiscula</i>	Common Grackle	
	<i>Sturnella magna</i>	Eastern Meadowlark	
Finches and Old World Sparrows			
	<i>Acanthis flammea</i>	Common Redpoll	
	<i>Haemorhous mexicanus</i>	House Finch	
	<i>Haemorhous purpureus</i>	Purple Finch	
	<i>Passer domesticus</i>	House Sparrow	
	<i>Spinus pinus</i>	Pine Siskin	
	<i>Spinus tristis</i>	American Goldfinch	
REPTILES			
Turtles	<i>Chelydra serpentina</i>	Snapping Turtle	
	<i>Chrysemys picta</i>	Painted Turtle	
	<i>Glyptemys insculpta</i>	Wood Turtle	?
	<i>Sternotherus odoratus</i>	Eastern Musk Turtle	?
	<i>Terrapene carolina</i>	Eastern Box Turtle	?
Snakes			
	<i>Lampropeltis triangulum</i>	Eastern Milksnake	?
	<i>Nerodia sipedon</i>	Northern Water Snake	Y
	<i>Pantherophis obsoletus</i>	Black Ratsnake	
	<i>Storeria dekayi</i>	DeKay's Brown Snake	
	<i>Thamnophis sauritus</i>	Eastern Ribbon Snake	?
	<i>Thamnophis sirtalis</i>	Eastern Garter Snake	
AMPHIBIANS			
Frogs and Toads	<i>Anaxyrus americanus</i>	American Toad	
	<i>Hyla versicolor</i>	Gray Treefrog	Y
	<i>Lithobates catesbeianus</i>	American Bullfrog	Y?
	<i>Lithobates clamitans</i>	Green Frog	
	<i>Lithobates palustris</i>	Pickerel Frog	Y
	<i>Lithobates sylvaticus</i>	Wood Frog	
	<i>Pseudacris crucifer</i>	Spring Peeper	
Salamanders & Newts			
	<i>Ambystoma maculatum</i>	Spotted Salamander	
	<i>Notophthalmus viridescens</i>	Red-spotted Newt	Y
	<i>Plethodon cinereus</i>	Eastern Red-backed Salamander	Y
FISH			
	<i>Acipenser brevirostrum</i>	Shortnose Sturgeon	
	<i>Acipenser oxyrinchus</i>	Atlantic Sturgeon	
	<i>Catostomus commersonii</i>	White Sucker	Y
	<i>Lepomis gibbosus</i>	Pumpkinseed	Y
	<i>Lepomis macrochirus</i>	Bluegill	Y
	<i>Micropterus salmoides</i>	Largemouth Bass	
	<i>Notemigonus crysoleucas</i>	Golden Shiner	Y
	<i>Rhinichthys atratulus</i>	Eastern Blacknose Dace	Y

cont.

INVERTEBRATES - Data Lacking			
Beetles	<i>Cicindela sexguttata</i>	Six-spotted Tiger Beetle	Y?
Butterflies	<i>Danaus plexippus</i>	Monarch	
	<i>Nymphalis antiopa</i>	Mourning Cloak	
	<i>Papilio glaucus</i>	Eastern Tiger Swallowtail	
Odonates	<i>Calopteryx maculata</i>	Ebony Jewelwing	Y
	<i>Erythemis simplicicollis</i>	Eastern Pondhawk	Y

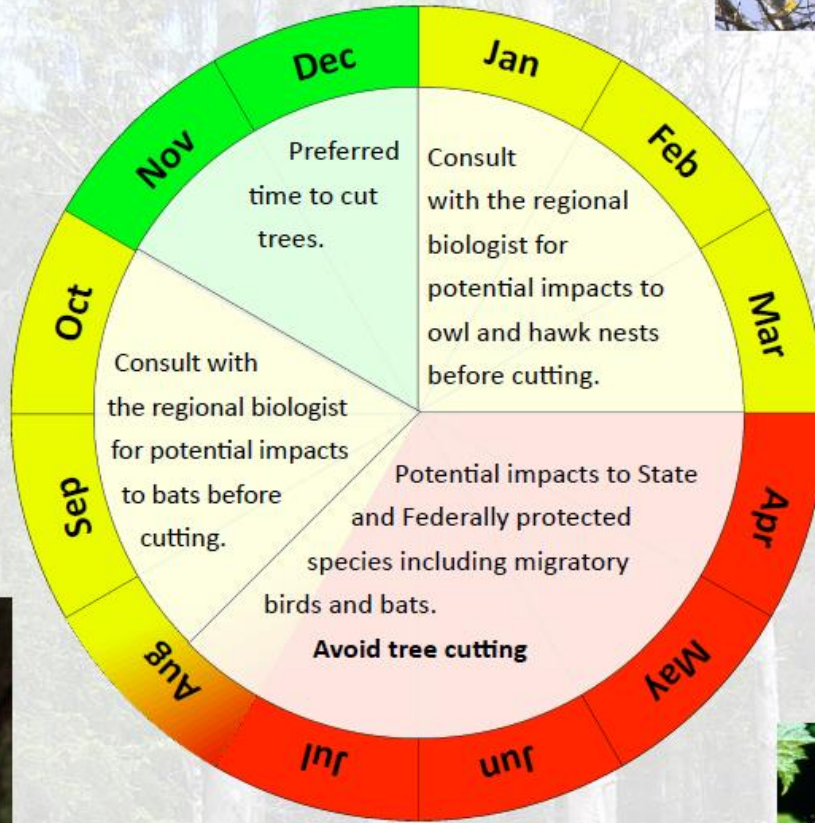
Appendix D – OPRHP Tree Removal Policy



Northern Long-eared Bat
Photo Credit: Al Hicks NYDEC



Bald Eagle
Photo Credit: Steve Hillebrand, USFWS

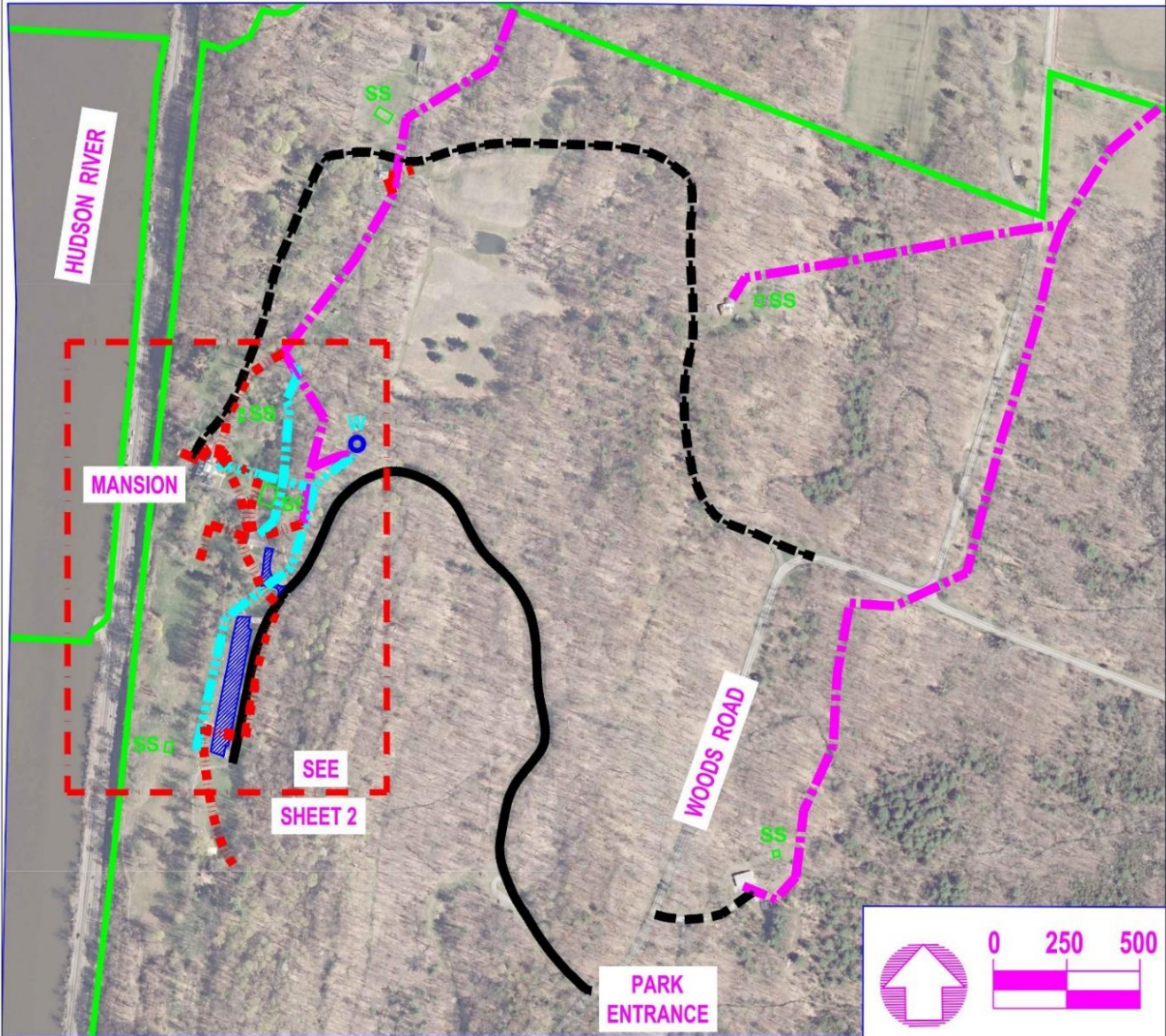


Indiana Bat
Photo Credit: Adam Mann



Hooded Warbler
Photo Credit: USFWS

Appendix E – Existing Site Infrastructure



LEGEND	
	PARK BOUNDARY
	PAVED ROADS - 3,400'
	GRAVEL ROADS - 4,600'
	WATER LINES - 2,100'
	OVERHEAD ELECTRIC - 6,900'
	UNDERGROUND ELECTRIC - 3,500'
	PARKING LOTS - 110 SPACES & 6 ACCESSIBLE
	SEPTIC SYSTEMS - 6
	WELL

SEPT. 27, 2021
SHEET 1 of 2

CLERMONT STATE HISTORIC PARK
MISCELLANEOUS INFRASTRUCTURE
Columbia County, New York

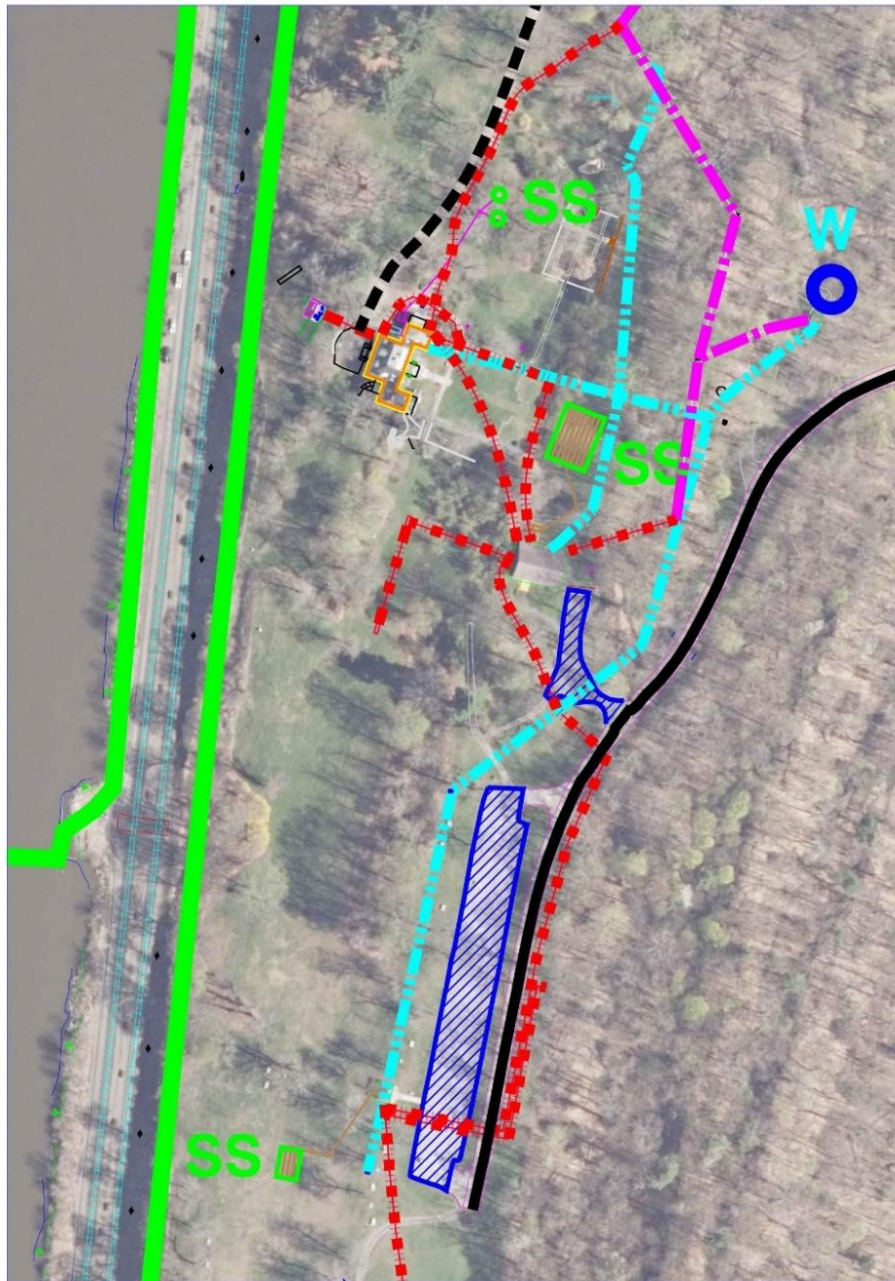


Parks, Recreation and Historic Preservation
Kathy Hochul
Governor
Erik Kulleseid
Commissioner

TACONIC REGION
PO Box 308, 9 Old Post Road
Staatsburg, NY 12580
Ph: 845.889.4100
Fax: 845.889.8321
www.nysparks.com

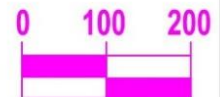
cont.

Existing Site Infrastructure, cont.



LEGEND

- | | | | | | |
|--|-----------------------|--|---|--|--------------------|
| | PARK BOUNDARY | | OVERHEAD ELECTRIC - 6,900' | | SEPTIC SYSTEMS - 6 |
| | PAVED ROADS - 3,400' | | UNDERGROUND ELECTRIC - 3,500' | | WELL |
| | GRAVEL ROADS - 4,600' | | PARKING LOTS - 110 SPACES
& 6 ACCESSIBLE | | |
| | WATER LINES - 2,100' | | | | |



SEPT. 27, 2021

CLERMONT STATE HISTORIC PARK
MISCELLANEOUS INFRASTRUCTURE

Columbia County, New York



**Parks, Recreation
and Historic Preservation**

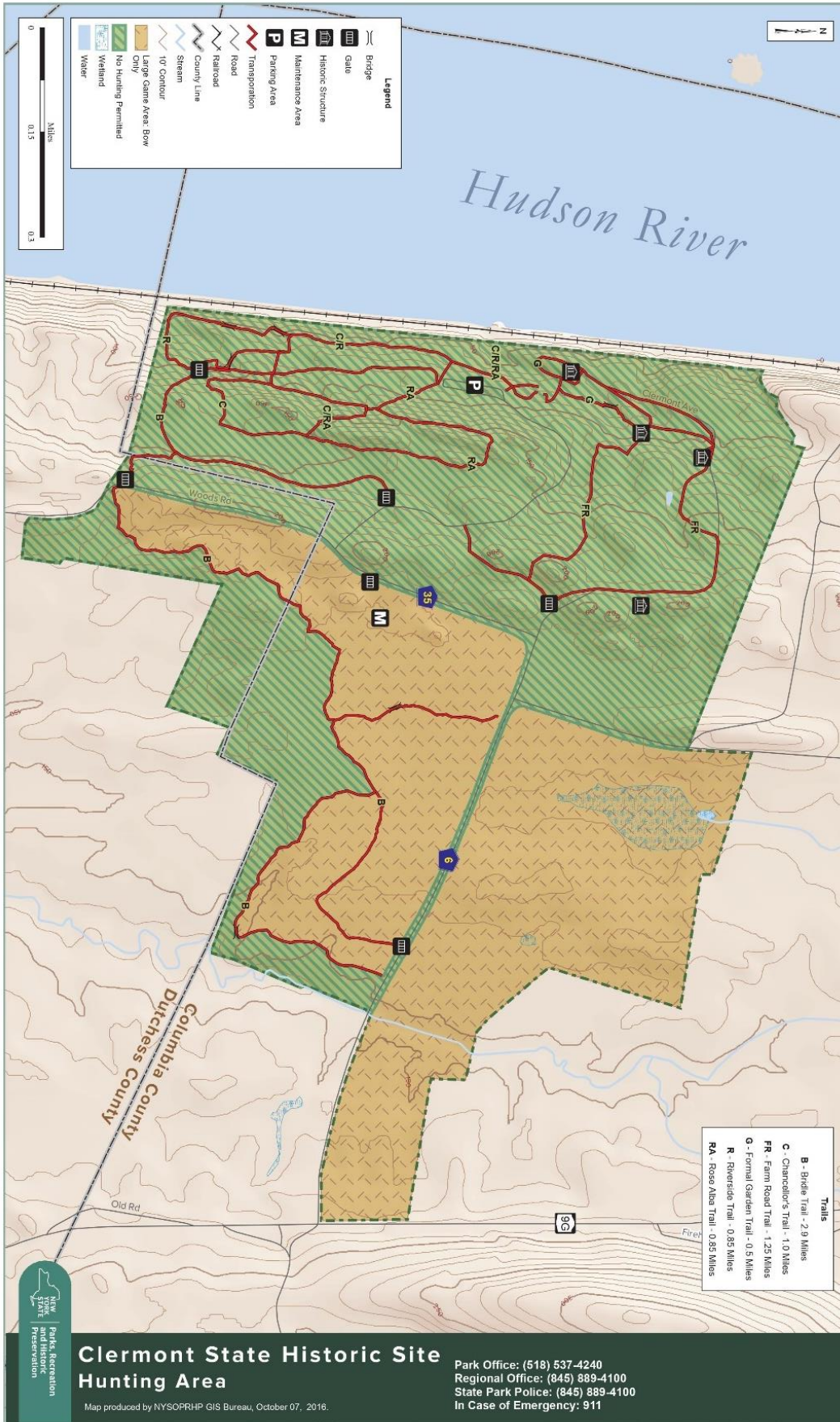
Kathy Hochul
Governor

Erik Kulleseid
Commissioner

TACONIC REGION
PO Box 308, 9 Old Post Road
Staatsburg, NY 12580
Ph: 845.889.4100
Fax: 845.889.8321
www.nysparks.com

SHEET 2 of 2

Appendix G – Clermont Hunting Map



**Clermont State Historic Site
Hunting Area**

Park Office: (518) 537-4240
 Regional Office: (845) 889-4100
 State Park Police: (845) 889-4100
 In Case of Emergency: 911

Map produced by NYSOPRHP GIS Bureau, October 07, 2016.

Appendix H – NYS Coastal Assessment Form

NEW YORK STATE DEPARTMENT OF STATE COASTAL MANAGEMENT PROGRAM

Coastal Assessment Form

A. INSTRUCTIONS (Please print or type all answers)

1. State agencies shall complete this CAF for proposed actions which are subject to Part 600 of Title 19 of the NYCRR. This assessment is intended to supplement other information used by a state agency in making a determination of significance pursuant to the State Environmental Quality Review Act (see 6 NYCRR, Part 617). If it is determined that a proposed action will not have a significant effect on the environment, this assessment is intended to assist a state agency in complying with the certification requirements of 19 NYCRR Section 600.4.
2. If any question in Section C on this form is answered "yes", then the proposed action may affect the achievement of the coastal policies contained in Article 42 of the Executive Law. Thus, the action should be analyzed in more detail and, if necessary, modified prior to either (a) making a certification of consistency pursuant to 19 NYCRR Part 600 or, (b) making the findings required under SEQR, 6 NYCRR, Section 617.11, if the action is one for which an environmental impact statement is being prepared. If an action cannot be certified as consistent with the coastal policies, it shall not be undertaken.
3. Before answering the questions in Section C, the preparer of this form should review the coastal policies contained in 19 NYCRR Section 600.5. A proposed action should be evaluated as to its significant beneficial and adverse effects upon the coastal area.

B. DESCRIPTION OF PROPOSED ACTION

1. Type of state agency action (check appropriate response):

- (a) Directly undertaken (e.g. capital construction, planning activity, agency regulation, land transaction)
- (b) Financial assistance (e.g. grant, loan, subsidy)
- (c) Permit, license, certification

2. Describe nature and extent of action: _____
The action is the adoption and implementation of a Master Plan for Clermont State Historic Site.

3. Location of action:
- | | | |
|--------------------------|----------------------------------|----------------------------|
| Dutchess/Columbia | Pleasant Valley, NY 12569 | 14 Maintenance Lane |
| County | City, Town or Village | Street or Site Description |

4. If an application for the proposed action has been filed with the state agency, the following information shall be provided:
- (a) Name of applicant: _____
- (b) Mailing address: _____
- (c) Telephone Number: Area Code (____) _____
- (d) State agency application number: _____

5. Will the action be directly undertaken, require funding, or approval by a federal agency?
 Yes No If yes, which federal agency? _____

C. COASTAL ASSESSMENT (Check either "YES" or "NO" for each of the following questions)

YES NO

1. Will the proposed activity be located in, or contiguous to, or have a significant effect upon any of the resource areas identified on the coastal area map:

(a) Significant fish or wildlife habitats?	<input checked="" type="checkbox"/>	<input type="checkbox"/>
(b) Scenic resources of statewide significance?	<input checked="" type="checkbox"/>	<input type="checkbox"/>
(c) Important agricultural lands?	<input type="checkbox"/>	<input checked="" type="checkbox"/>

2. Will the proposed activity have a significant effect upon:

(a) Commercial or recreational use of fish and wildlife resources?	<input type="checkbox"/>	<input checked="" type="checkbox"/>
(b) Scenic quality of the coastal environment?	<input type="checkbox"/>	<input checked="" type="checkbox"/>
(c) Development of future, or existing water dependent uses?	<input type="checkbox"/>	<input checked="" type="checkbox"/>
(d) Operation of the State's major ports?	<input type="checkbox"/>	<input checked="" type="checkbox"/>
(e) Land and water uses within the State's small harbors?	<input type="checkbox"/>	<input checked="" type="checkbox"/>
(f) Existing or potential public recreation opportunities?	<input type="checkbox"/>	<input checked="" type="checkbox"/>
(g) Structures, sites or districts of historic, archeological or cultural significance to the State or nation?	<input checked="" type="checkbox"/>	<input type="checkbox"/>

3. Will the proposed activity involve or result in any of the following:

- (a) Physical alteration of two (2) acres or more of land along the shoreline, land under water or coastal waters?
- (b) Physical alteration of five (5) acres or more of land located elsewhere in the coastal area?
- (c) Expansion of existing public services of infrastructure in undeveloped or low density areas of the coastal area?
- (d) Energy facility not subject to Article VII or VIII of the Public Service Law?
- (e) Mining, excavation, filling or dredging in coastal waters?
- (f) Reduction of existing or potential public access to or along the shore?
- (g) Sale or change in use of state-owned lands located on the shoreline or under water?
- (h) Development within a designated flood or erosion hazard area?
- (i) Development on a beach, dune, barrier island or other natural feature that provides protection against flooding or erosion?

4. Will the proposed action be located in or have a significant effect upon an area included in an approved Local Waterfront Revitalization Program?

D. SUBMISSION REQUIREMENTS

If any question in Section C is answered "Yes", AND either of the following two conditions is met:

Section B.1(a) or B.1(b) is checked; or
Section B.1(c) is checked AND B.5 is answered "Yes",

THEN a copy of this completed Coastal Assessment Form shall be submitted to:

New York State Department of State
Office of Coastal, Local Government and Community Sustainability
One Commerce Plaza
99 Washington Avenue, Suite 1010
Albany, New York 12231-0001

If assistance or further information is needed to complete this form, please call the Department of State at (518) 474-6000.

E. REMARKS OR ADDITIONAL INFORMATION

The EIS includes a summary discussion of coastal consistency within Chapter 4 – Environmental Impacts and Mitigation. A full discussion of applicable policies is included in the following pages of this Appendix.

Preparer's Name: Mark Hohengasser
(Please print)

Title: Planner Agency: Office of Parks, Recreation and Historic Preservation

Telephone Number: (518) 408-1827 Date: 4/18/2023

Coastal Assessment Form Addendum: Coastal Policy Discussion

New York State coastal policies are organized under major headings. Those policy areas and specific policies applicable to the master plan are listed below. Following each applicable policy is a brief discussion on the extent of consistency of the master plan with the policy.

Refer to the EIS Chapter 4 - Environmental Impacts and Mitigation under Relationship to Other Programs, for an explanation of general applicability of the coastal program to state agency actions, as well as OPRHP's certification of consistency with State coastal policies

Fish and Wildlife Policies

POLICY b (1) - Significant coastal fish and wildlife habitats, as identified on the coastal area map, shall be protected, preserved and, where practical, restored so as to maintain their viability as habitats.

Clermont State Historic Site borders the Germantown-Clermont Flats Significant Coastal Fish and Wildlife Habitat (SCFWH) within the Hudson River. The master plan proposes no in-water or shoreline work. The master plan is consistent with this policy as it calls for increased natural resource protection of the park. The park provides important watershed protection for habitats within and that lead to the Hudson River. The actions proposed under the Plan will have no negative impact or will have beneficial impacts on these ecosystems and the fish and wildlife species that they support. The Plan includes a focus on invasive species management. All development, including the restoration of the original entrance road, a trailhead parking lot and the restoration of park features, will utilize Best Management Practices related to stormwater management and erosion to protect the habitat of the wetlands and the Hudson River. No additional recreation or activities are proposed which will adversely impact wildlife at Clermont State Historic Site or the concentrations of waterfowl, reptiles, turtle, fish and other wildlife on the Germantown-Clermont Flats SCFWH area.

Scenic Quality Policies

POLICY d (1) Prevent impairment of scenic resources of statewide significance, as identified on the coastal area map. Impairment shall include: (i) the irreversible modification of geological forms, the destruction or removal of vegetation, the destruction or removal of structures, wherever the geologic forms, vegetation or structures are significant to the scenic quality of an identified resource; and (ii) the addition of structures which because of siting or scale will reduce identified views or which because of scale, form or materials will diminish the scenic quality of an identified resource.

POLICY d (2) Protect, restore and enhance natural and man-made resources which are not identified as being of statewide significance, but which contribute to the scenic quality of the coastal area.

Clermont State Historic Site is located within the Hudson River Estates District (ED) - Subunits (1) Clermont and (2) Clermont/Tivoli Estate Farmland Scenic Areas of Statewide Significance (SASS). Clermont State Historic Site is noted as a predominant feature of the Subunits' SASS description, as its physical and cultural character and viewshed are representative of the subunits' characteristics. The protection of the high scenic quality of this Site, both from within the Site and from outside the Site is a goal of the Master Plan and this scenic quality will not be impaired in the implementation of any of the actions proposed under the plan.

The addition to the mansion will not be visible from the Hudson River and will be consistent with the historic visual character of the Site. The trailhead parking lot, restroom replacement, trail improvements, restoration of the original roadway and small solar installation will not adversely impact scenic resources. Vegetative buffers will remain in place to protect the scenic nature of the area.

Additionally, offshore of the Site is the Ulster North (UN) – 4 Saugerties Bluff Subunit SASS. The Subunit is considered of high scenic quality as it includes steep wooded bluffs along the Hudson River shoreline with historic landscaped estates upland of the shoreline. The Master Plan proposes no in-water or shoreline work or any improvements that would directly impact the bluffs or views of the Site from offshore or across the Site to views of the Hudson River and beyond.

Public access policies

POLICY e (1) Protect, maintain, and increase the levels and types of access to public water-related recreation resources and facilities so that these resources and facilities may be fully utilized by all the public in accordance with reasonably anticipated public recreation needs and the protection of historic and natural resources. In providing such access, priority shall be given to public beaches, boating facilities, fishing areas and waterfront parks.

POLICY e (2) Access to the publicly owned foreshore and to lands immediately adjacent to the foreshore or the water's edge that are publicly owned shall be provided, and it should be provided in a manner compatible with adjoining uses. Such lands shall be retained in public ownership.

The Master Plan protects and maintains all public access to this waterfront site and its shoreline areas for recreation and public use. All proposals contained within the Master Plan are consistent with the current recreational use of the Site and this policy.

Recreation Policies

POLICY f (3) Protect, enhance and restore structures, districts, areas or sites that are of significance in the history, architecture, archeology or culture of the State, its communities or the nation.

The Master Plan is consistent with this policy. Direct consultation with OPRHP's Division for Historic Preservation occurred during the development of the Master Plan to assure proper consideration and protection of historic and cultural resources. Additional detailed review under the State Historic Preservation Act will be completed prior to any proposed actions requiring ground disturbance or to any Register eligible structures to further insure that potential historic and cultural resources are protected.

Water Resources Policies

POLICY h (3) Best management practices will be used to ensure the control of stormwater runoff and combined sewer overflows draining into coastal waters.

POLICY h (5) Best management practices will be utilized to minimize the non-point discharge of excess nutrients, organics and eroded soils into coastal waters.

All proposed development, including the restoration of the original entrance road, a trailhead parking lot and the restoration of park features, will utilize Best Management Practices related to stormwater management and erosion to protect wetlands and the Hudson River. The Master Plan includes strong provisions to protect the freshwater wetlands of the park and adjacent waters and therefore will be consistent with these policies. No new development is proposed within or near state or federal wetlands within the Site. Existing trails that are located adjacent to wetland areas will be surveyed to ensure that habitat and water quality are not being impacted from recreational use or invasive species.

Resources:

New York Department of State. 2012. Significant coastal fish and wildlife habitat narrative for Germantown-Clermont Flats. New York Department of State, Division of Coastal Resources and Waterfront Revitalization, Albany NY.
https://dos.ny.gov/system/files/documents/2020/03/germantown_clermont_flats_final.pdf

New York Department of State. 1993 (Reprinted 2004). Scenic Areas of Statewide Significance. New York Department of State, Division of Coastal Resources and Waterfront Revitalization, Albany, NY.
<https://dos.ny.gov/system/files/documents/2020/08/udson-river-valley-sass.pdf>