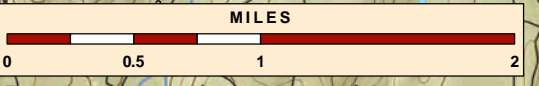
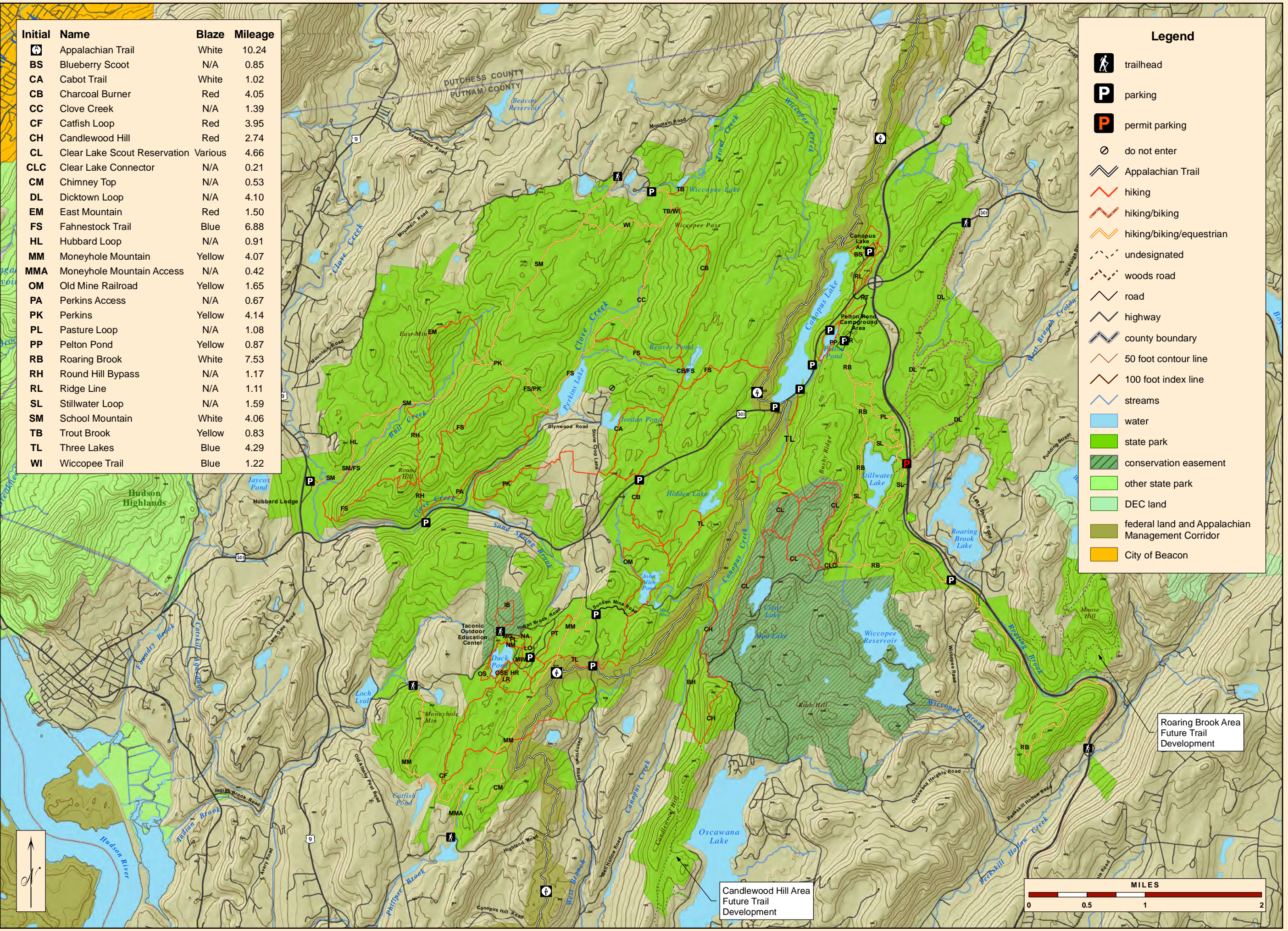


| Initial | Name | Blaze | Mileage |
|---------|------------------------------|---------|---------|
| A | Appalachian Trail | White | 10.24 |
| BS | Blueberry Scoot | N/A | 0.85 |
| CA | Cabot Trail | White | 1.02 |
| CB | Charcoal Burner | Red | 4.05 |
| CC | Clove Creek | N/A | 1.39 |
| CF | Catfish Loop | Red | 3.95 |
| CH | Candlewood Hill | Red | 2.74 |
| CL | Clear Lake Scout Reservation | Various | 4.66 |
| CLC | Clear Lake Connector | N/A | 0.21 |
| CM | Chimney Top | N/A | 0.53 |
| DL | Dicktown Loop | N/A | 4.10 |
| EM | East Mountain | Red | 1.50 |
| FS | Fahnestock Trail | Blue | 6.88 |
| HL | Hubbard Loop | N/A | 0.91 |
| MM | Moneyhole Mountain | Yellow | 4.07 |
| MMA | Moneyhole Mountain Access | N/A | 0.42 |
| OM | Old Mine Railroad | Yellow | 1.65 |
| PA | Perkins Access | N/A | 0.67 |
| PK | Perkins | Yellow | 4.14 |
| PL | Pasture Loop | N/A | 1.08 |
| PP | Pelton Pond | Yellow | 0.87 |
| RB | Roaring Brook | White | 7.53 |
| RH | Round Hill Bypass | N/A | 1.17 |
| RL | Ridge Line | N/A | 1.11 |
| SL | Stillwater Loop | N/A | 1.59 |
| SM | School Mountain | White | 4.06 |
| TB | Trout Brook | Yellow | 0.83 |
| TL | Three Lakes | Blue | 4.29 |
| WI | Wicopee Trail | Blue | 1.22 |

Legend

- trailhead
- parking
- permit parking
- do not enter
- Appalachian Trail
- hiking
- hiking/biking
- hiking/biking/equestrian
- undesignated
- woods road
- road
- highway
- county boundary
- 50 foot contour line
- 100 foot index line
- streams
- water
- state park
- conservation easement
- other state park
- DEC land
- federal land and Appalachian Management Corridor
- City of Beacon



Trails Plan

Figure #19

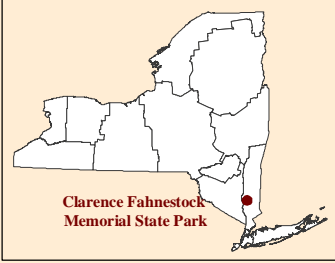
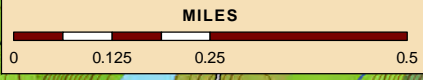
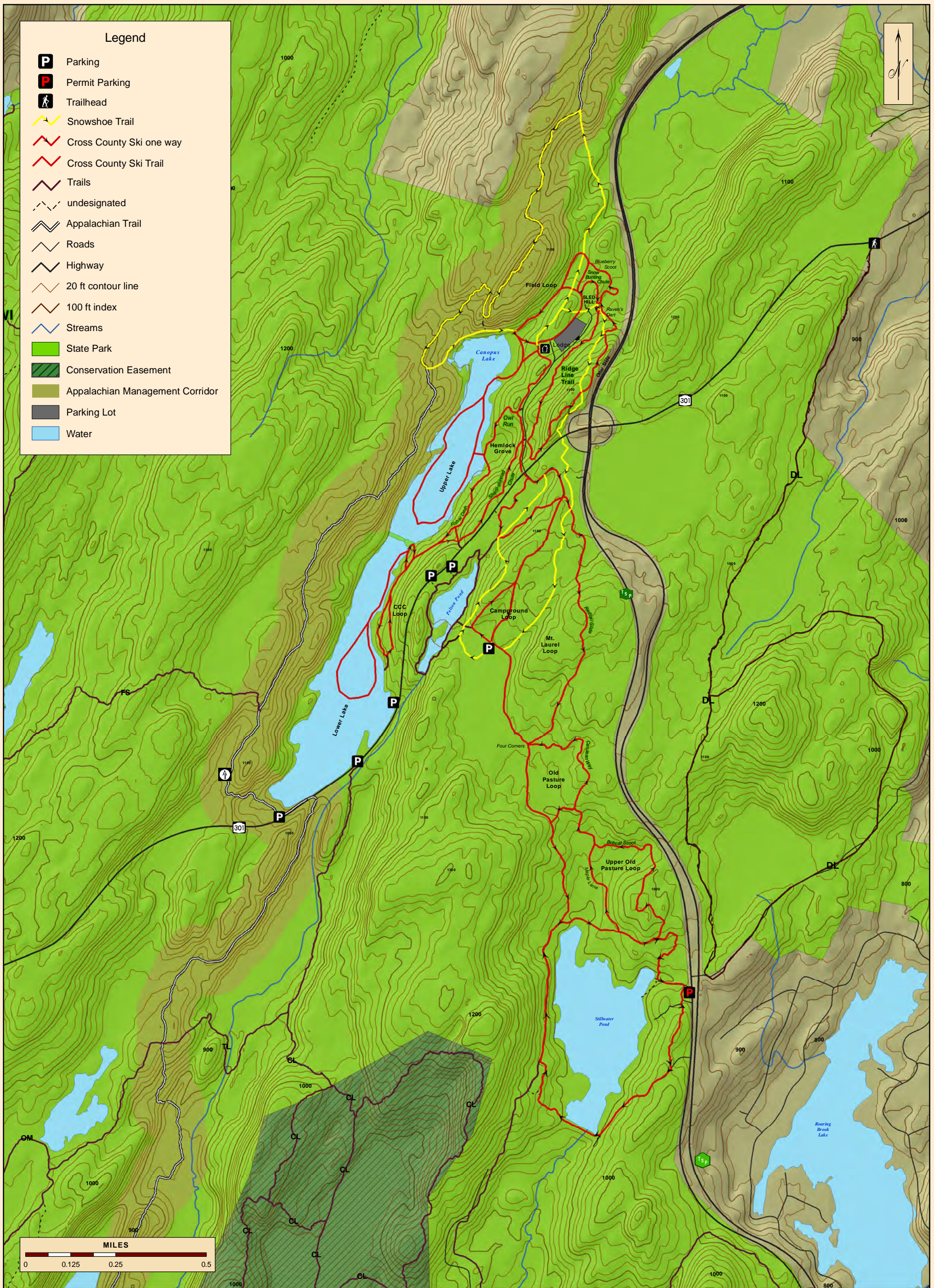
Trails Plan

Clarence Fahnestock Memorial State Park

Map produced by NYSOPRHP-GIS Unit, November 24, 2010.



Clarence Fahnestock Memorial State Park



Trails Plan - Winter Park

Clarence Fahnestock Memorial State Park

Map produced by NYSOPRHP-GIS Unit, September 9, 2010.

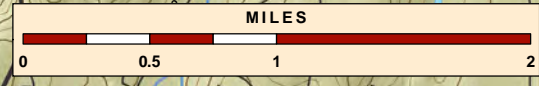
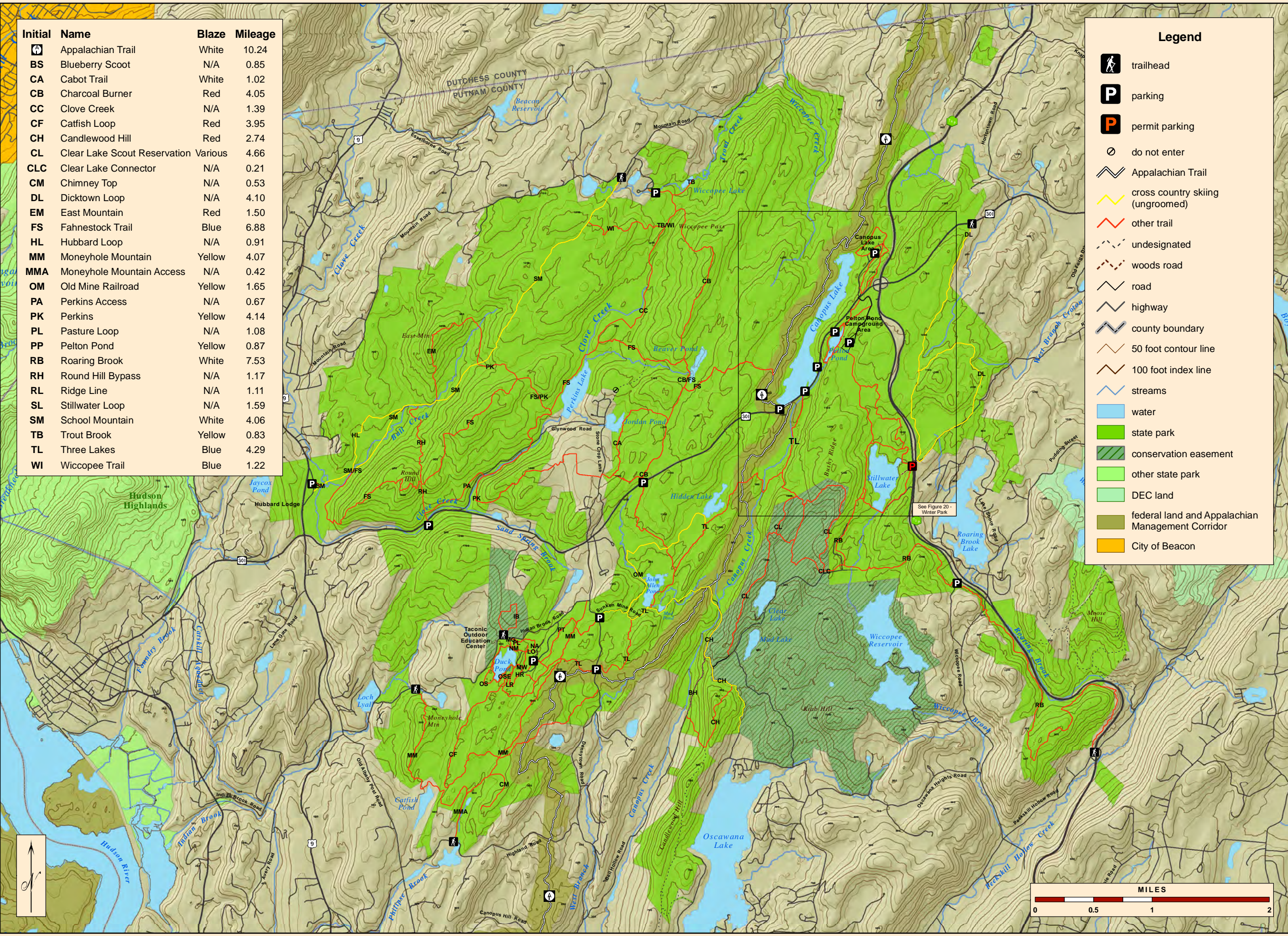
Trails Plan

Figure #20

| Initial | Name | Blaze | Mileage |
|---------|------------------------------|---------|---------|
| AT | Appalachian Trail | White | 10.24 |
| BS | Blueberry Scoot | N/A | 0.85 |
| CA | Cabot Trail | White | 1.02 |
| CB | Charcoal Burner | Red | 4.05 |
| CC | Clove Creek | N/A | 1.39 |
| CF | Catfish Loop | Red | 3.95 |
| CH | Candlewood Hill | Red | 2.74 |
| CL | Clear Lake Scout Reservation | Various | 4.66 |
| CLC | Clear Lake Connector | N/A | 0.21 |
| CM | Chimney Top | N/A | 0.53 |
| DL | Dicktown Loop | N/A | 4.10 |
| EM | East Mountain | Red | 1.50 |
| FS | Fahnestock Trail | Blue | 6.88 |
| HL | Hubbard Loop | N/A | 0.91 |
| MM | Moneyhole Mountain | Yellow | 4.07 |
| MMA | Moneyhole Mountain Access | N/A | 0.42 |
| OM | Old Mine Railroad | Yellow | 1.65 |
| PA | Perkins Access | N/A | 0.67 |
| PK | Perkins | Yellow | 4.14 |
| PL | Pasture Loop | N/A | 1.08 |
| PP | Pelton Pond | Yellow | 0.87 |
| RB | Roaring Brook | White | 7.53 |
| RH | Round Hill Bypass | N/A | 1.17 |
| RL | Ridge Line | N/A | 1.11 |
| SL | Stillwater Loop | N/A | 1.59 |
| SM | School Mountain | White | 4.06 |
| TB | Trout Brook | Yellow | 0.83 |
| TL | Three Lakes | Blue | 4.29 |
| WI | Wicopee Trail | Blue | 1.22 |

Legend

- trailhead
- parking
- permit parking
- do not enter
- Appalachian Trail
- cross country skiing (ungroomed)
- other trail
- undesignated
- woods road
- road
- highway
- county boundary
- 50 foot contour line
- 100 foot index line
- streams
- water
- state park
- conservation easement
- other state park
- DEC land
- federal land and Appalachian Management Corridor
- City of Beacon



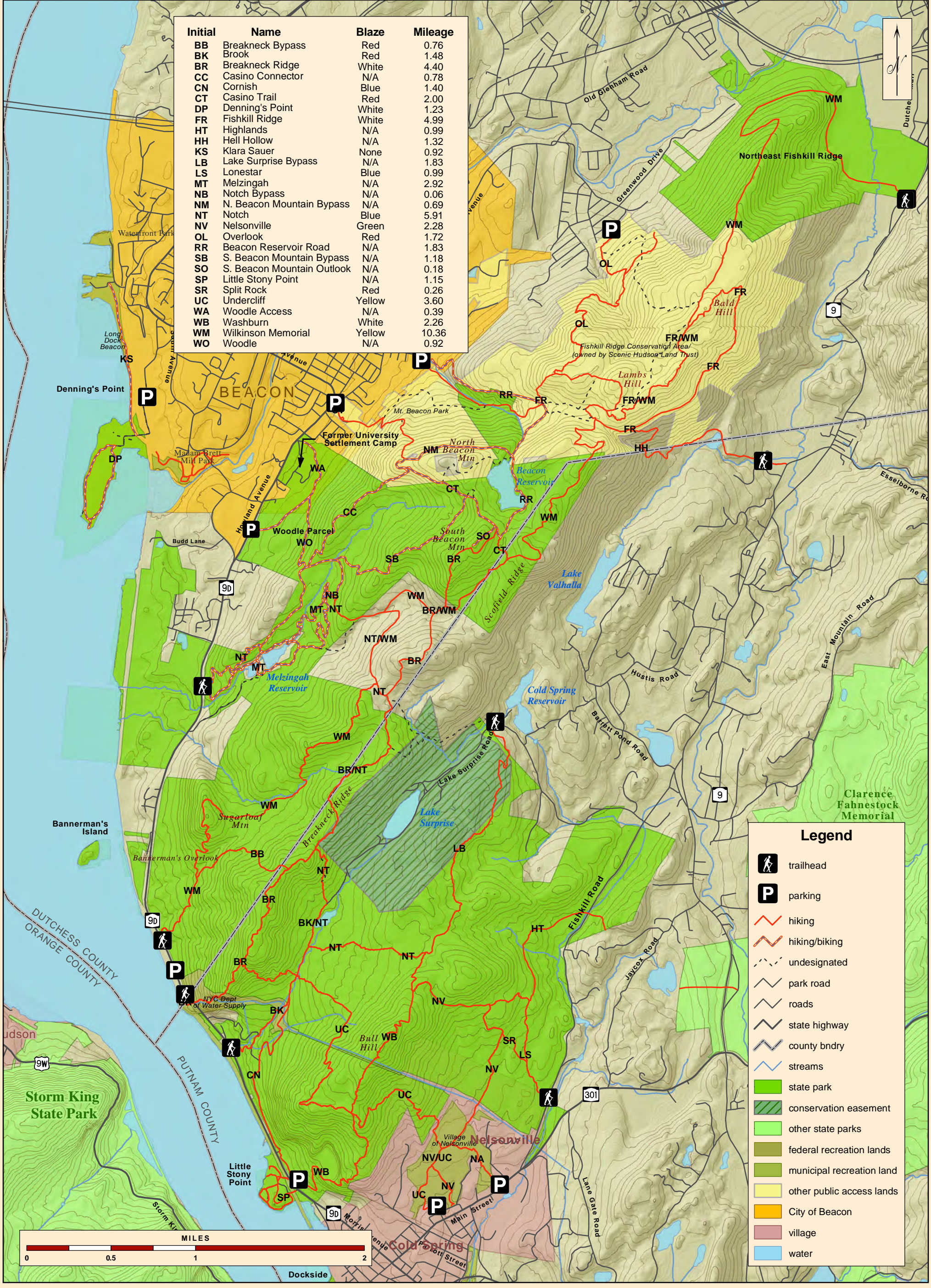
Trails Plan
Figure #21

Trails Plan - Cross Country Skiing Trails Clarence Fahnestock Memorial State Park

Map produced by NYSOPRHP-GIS Unit, September 9, 2010.



| Initial | Name | Blaze | Mileage |
|---------|----------------------------|--------|---------|
| BB | Breakneck Bypass | Red | 0.76 |
| BK | Breakneck Ridge | White | 1.48 |
| BR | Breakneck Ridge | Red | 4.40 |
| CC | Casino Connector | N/A | 0.78 |
| CN | Cornish | Blue | 1.40 |
| CT | Casino Trail | Red | 2.00 |
| DP | Denning's Point | White | 1.23 |
| FR | Fishkill Ridge | White | 4.99 |
| HT | Highlands | N/A | 0.99 |
| HH | Hell Hollow | N/A | 1.32 |
| KS | Klara Sauer | None | 0.92 |
| LB | Lake Surprise Bypass | N/A | 1.83 |
| LS | Lonestar | Blue | 0.99 |
| MT | Melzingah | N/A | 2.92 |
| NB | Notch Bypass | N/A | 0.06 |
| NM | N. Beacon Mountain Bypass | N/A | 0.69 |
| NT | Notch | Blue | 5.91 |
| NV | Nelsonville | Green | 2.28 |
| OL | Overlook | Red | 1.72 |
| RR | Beacon Reservoir Road | N/A | 1.83 |
| SB | S. Beacon Mountain Bypass | N/A | 1.18 |
| SO | S. Beacon Mountain Outlook | N/A | 0.18 |
| SP | Little Stony Point | N/A | 1.15 |
| SR | Split Rock | Red | 0.26 |
| UC | Undercliff | Yellow | 3.60 |
| WA | Woodle Access | N/A | 0.39 |
| WB | Washburn | White | 2.26 |
| WM | Wilkinson Memorial | Yellow | 10.36 |
| WO | Woodle | N/A | 0.92 |

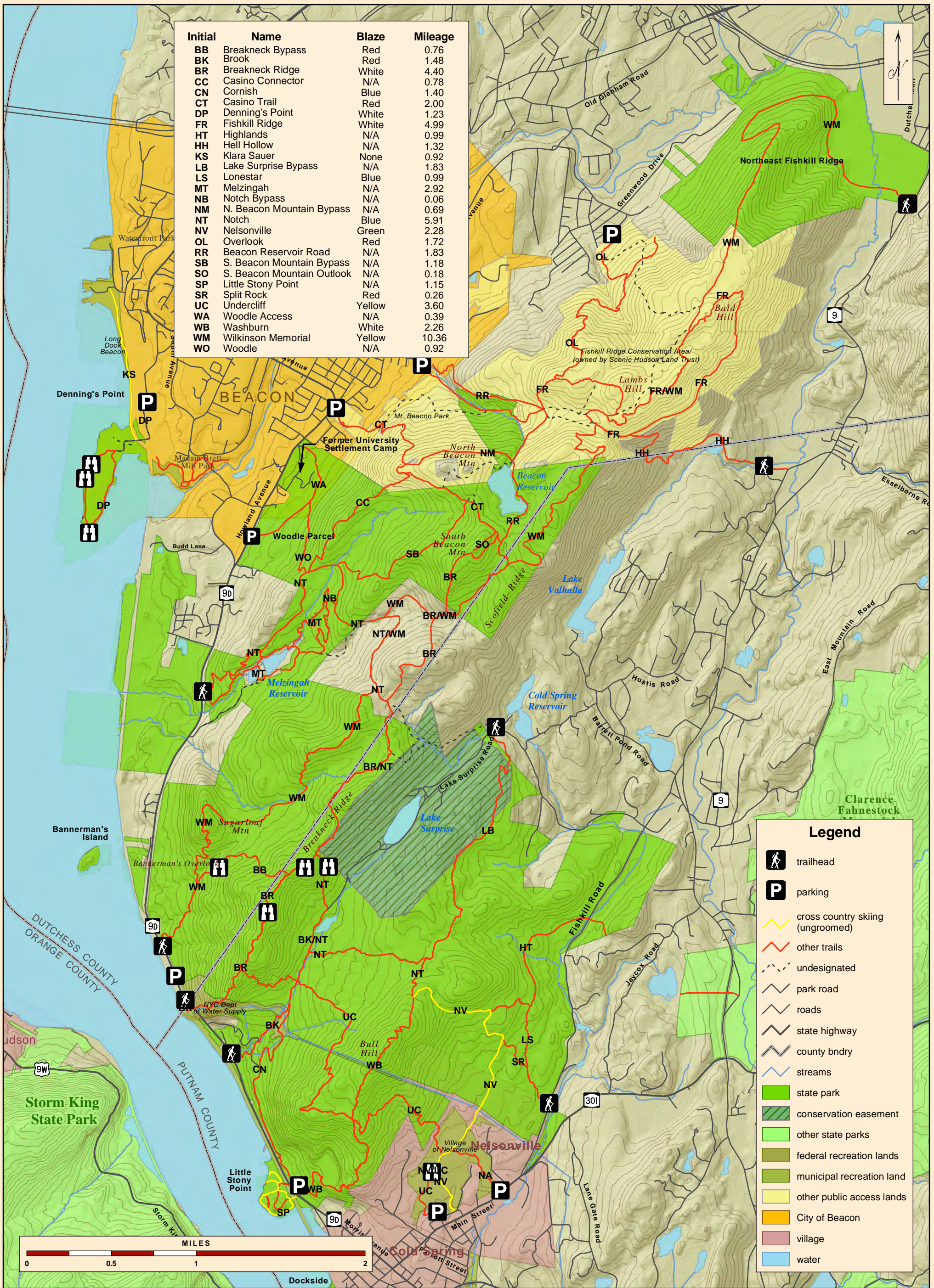


Trails Plan - North

Hudson Highlands State Park Preserve

Trails Plan
Figure #22

Map produced by NYSOPRHP-GIS Unit, November 24, 2010.

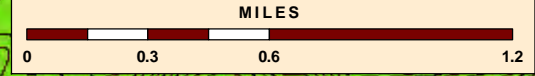
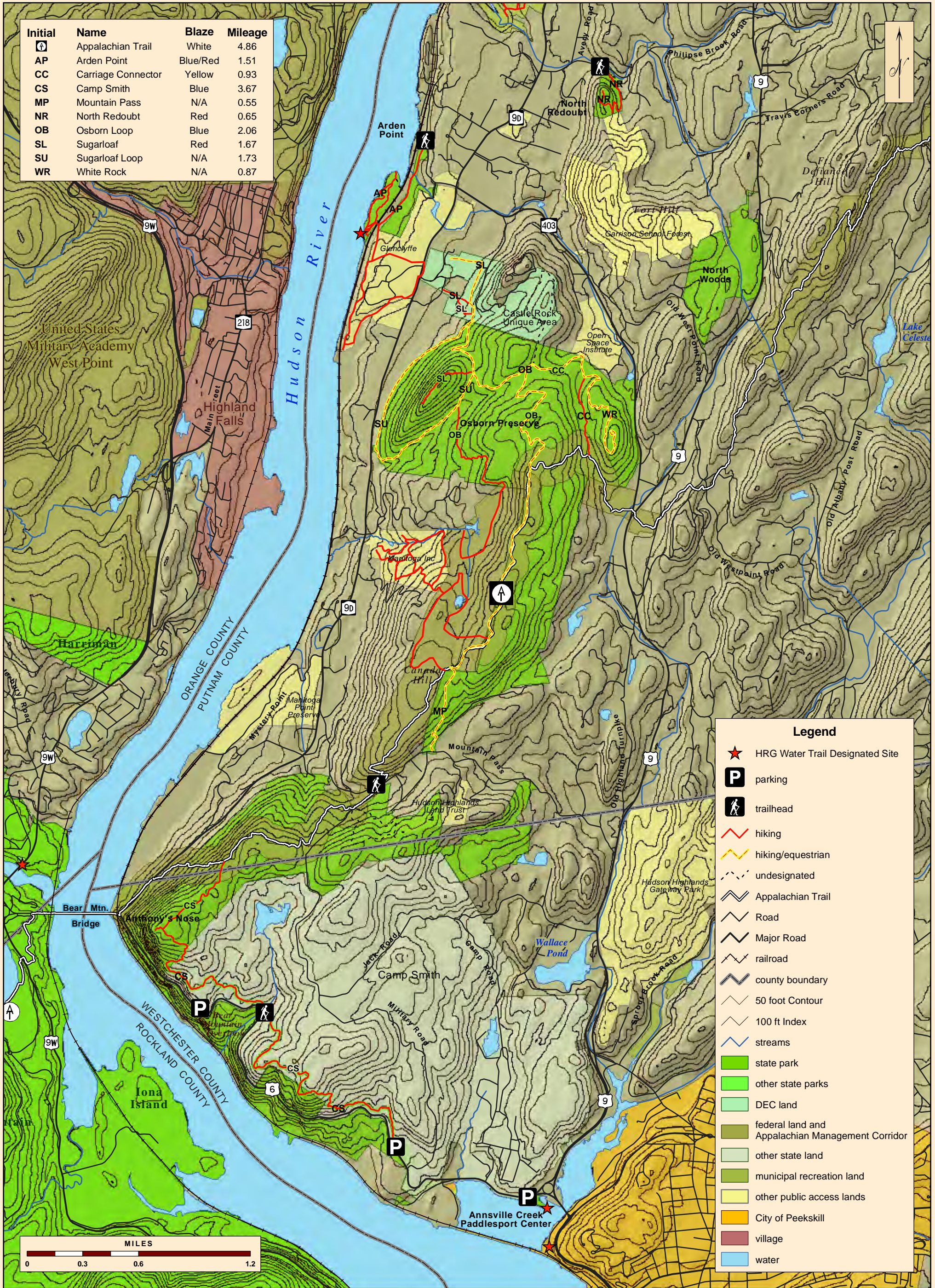


Trails Plan - Cross Country Skiing North Hudson Highlands State Park Preserve

Map produced by NYSOPRHP-GIS Unit, November 24, 2010.

Trails Plan
Figure #23

| Initial | Name | Blaze | Mileage |
|---------|--------------------|----------|---------|
| AT | Appalachian Trail | White | 4.86 |
| AP | Arden Point | Blue/Red | 1.51 |
| CC | Carriage Connector | Yellow | 0.93 |
| CS | Camp Smith | Blue | 3.67 |
| MP | Mountain Pass | N/A | 0.55 |
| NR | North Redoubt | Red | 0.65 |
| OB | Osborn Loop | Blue | 2.06 |
| SL | Sugarloaf | Red | 1.67 |
| SU | Sugarloaf Loop | N/A | 1.73 |
| WR | White Rock | N/A | 0.87 |



| Legend | |
|--------|--|
| ★ | HRG Water Trail Designated Site |
| P | parking |
| 🚶 | trailhead |
| 👉 | hiking |
| 👉 | hiking/equestrian |
| --- | undesignated |
| 👉 | Appalachian Trail |
| 👉 | Road |
| 👉 | Major Road |
| 👉 | railroad |
| 👉 | county boundary |
| 👉 | 50 foot Contour |
| 👉 | 100 ft Index |
| 👉 | streams |
| 🟩 | state park |
| 🟩 | other state parks |
| 🟩 | DEC land |
| 🟩 | federal land and Appalachian Management Corridor |
| 🟩 | other state land |
| 🟩 | municipal recreation land |
| 🟩 | other public access lands |
| 🟡 | City of Peekskill |
| 🟤 | village |
| 🟦 | water |



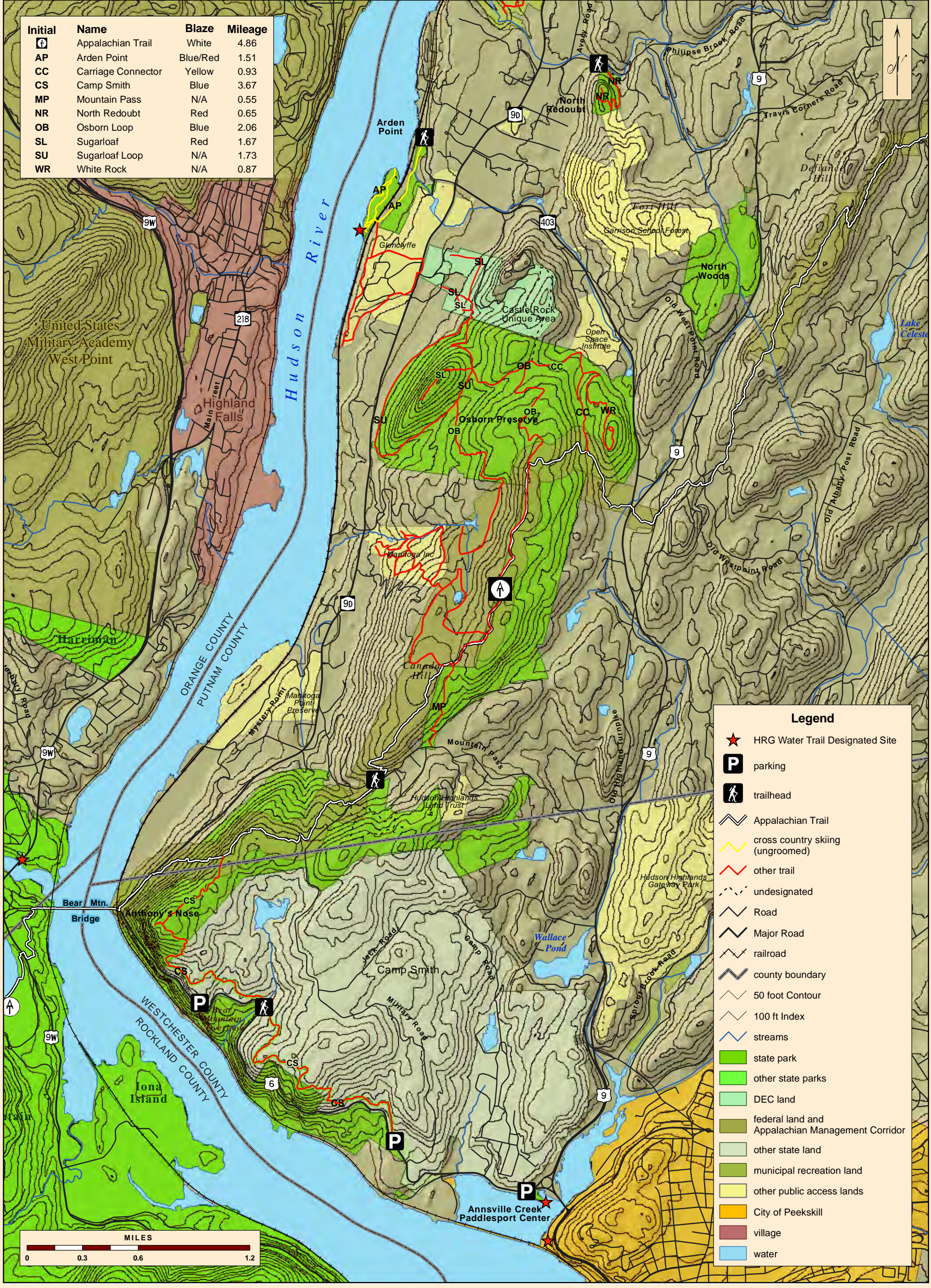
Trails Plan - South

Hudson Highlands State Park Preserve

Trails Plan
Figure #24

Map produced by NYSOPRHP-GIS Unit, November 24, 2010.

| Initial | Name | Blaze | Mileage |
|---------|--------------------|----------|---------|
| AT | Appalachian Trail | White | 4.86 |
| AP | Arden Point | Blue/Red | 1.51 |
| CC | Carriage Connector | Yellow | 0.93 |
| CS | Camp Smith | Blue | 3.67 |
| MP | Mountain Pass | N/A | 0.55 |
| NR | North Redoubt | Red | 0.65 |
| OB | Osborn Loop | Blue | 2.06 |
| SL | Sugarloaf | Red | 1.67 |
| SU | Sugarloaf Loop | N/A | 1.73 |
| WR | White Rock | N/A | 0.87 |



Legend

- ★ HRG Water Trail Designated Site
- P parking
- 🚶 trailhead
- ⚡ Appalachian Trail
- 🏂 cross country skiing (ungroomed)
- 👉 other trail
- ⋯ undesignated
- 🛣 Road
- 🛣 Major Road
- 🚂 railroad
- 🗺 county boundary
- 📏 50 foot Contour
- 📏 100 ft Index
- 🌊 streams
- 🌿 state park
- 🌿 other state parks
- 🌿 DEC land
- 🌿 federal land and Appalachian Management Corridor
- 🌿 other state land
- 🌿 municipal recreation land
- 🌿 other public access lands
- 🏡 City of Peekskill
- 🏡 village
- 💧 water



Trails Plan - Cross Country Trails South Hudson Highlands State Park Preserve

Map produced by NYSOPRHP-GIS Unit, November 24, 2010.

Trails Plan
Figure #25