

# Harriet Hollister Spencer State Park

6775 Canadice Hill Road  
Springwater, Ny 14560

Park Office: (585) 335-8111  
Regional Office: (607) 387-7041  
Park Police: (800) 255-3577  
In Case of Emergency: 911



New York State  
Parks, Recreation and  
Historic Preservation

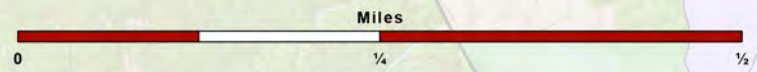
## Legend

- Bench
- Bridge
- Gate
- Information
- Parking Area
- Picnic Area
- Picnic Pavilion
- Public Restroom
- Scenic View
- County Line
- Roads
- Trails
- Single Track Trails
- Building
- Harriet Hollister Spencer State Park
- Honeye Inlet WMA

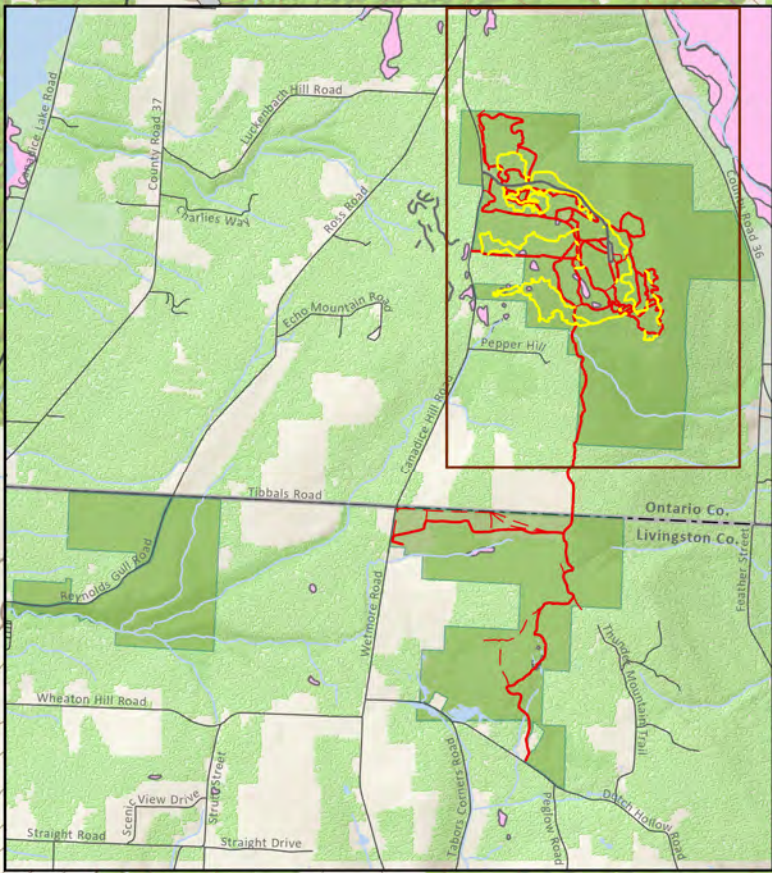
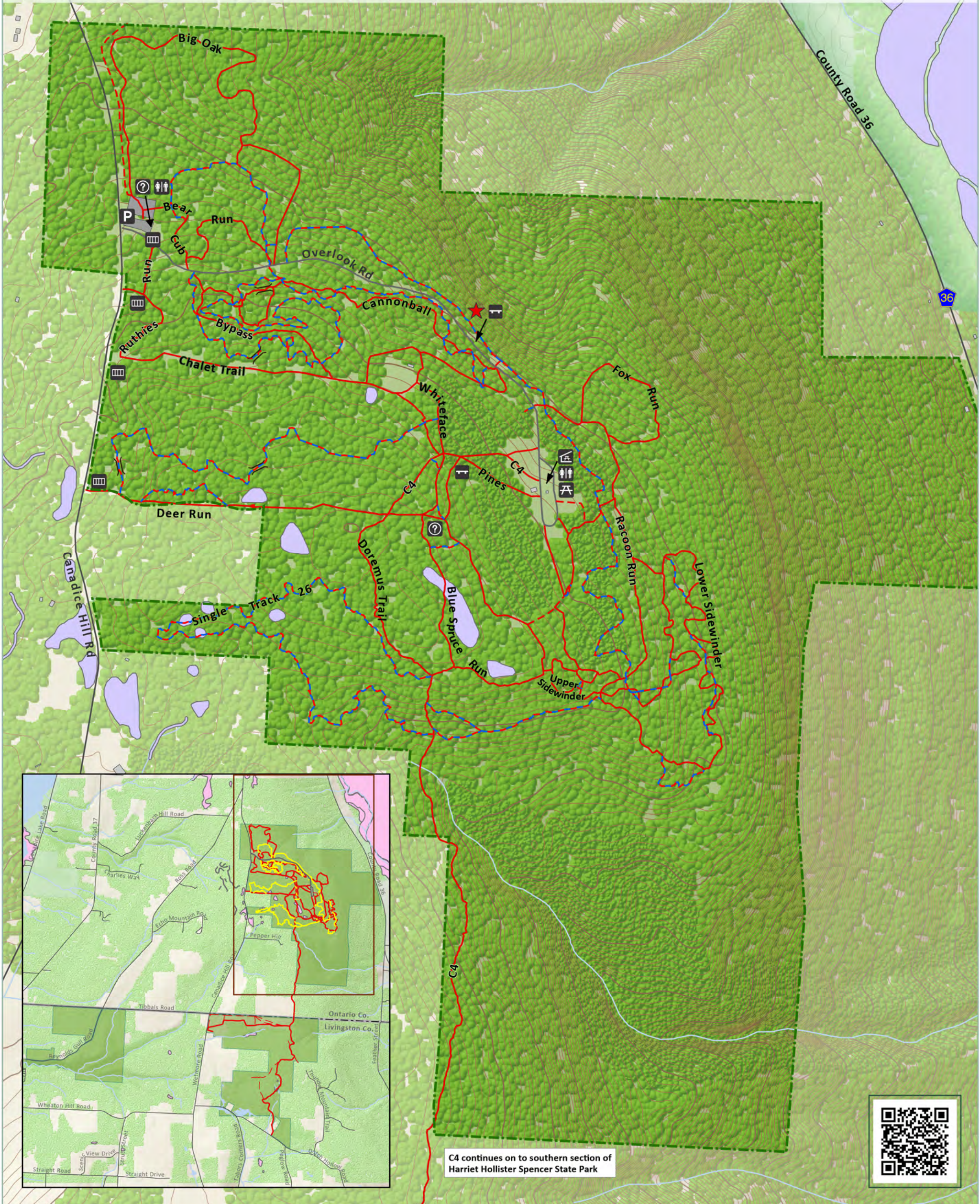
## Park Trails & Distance

Bear Cub Run	0.4	Deer Run	0.5
Big Elk	0.1	Fox Run	0.32
Big Oak	1.0	Lower Sidewinder	1.2
Blue Spruce Run	0.7	Pines	0.3
Bypass	0.3	Raccoon Run	0.8
Corridor 4 (C4)	3.8	Ruthies Run	0.21
Cannonball	0.7	S26 Single Track	6.3
Chalet Loop	0.24	Upper Sidewinder	0.2
Chalet	0.36	Whiteface	0.4

Please be considerate of other park users.  
Please report any accident or incident immediately to park police.  
All boundaries and trails are shown as approximate.  
Be aware of changing trail conditions.



Map produced by NYSOPRHP GIS Bureau, July 11, 2023.



C4 continues on to southern section of Harriet Hollister Spencer State Park

