

# Verona Beach State Park

6541 Lakeshore Rd, Verona Beach, NY 13162

Park Office: (315) 762 - 4463  
 Regional Office: (315) 492 - 1756  
 Park Police: (315) 492 - 6422  
 In Case of Emergency: 911



New York State  
 Parks, Recreation and  
 Historic Preservation

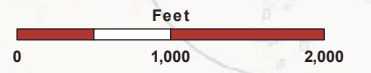
## Legend

- |  |                       |  |                 |
|--|-----------------------|--|-----------------|
|  | Barn                  |  | Park Office     |
|  | Beach                 |  | Picnic Pavilion |
|  | Bridge                |  | County Boundary |
|  | Gate                  |  | Roads           |
|  | Hand Boat Launch      |  | Paved Footpath  |
|  | Interpretational Sign |  | 10' Contour     |
|  | No Horses Permitted   |  | Streams         |
|  | Observation Deck      |  | Park Boundary   |
|  | Outdoor Shower        |  | Wetlands        |
|  | Parking               |  |                 |

## Park Trails

ID - Name - Blaze - Miles

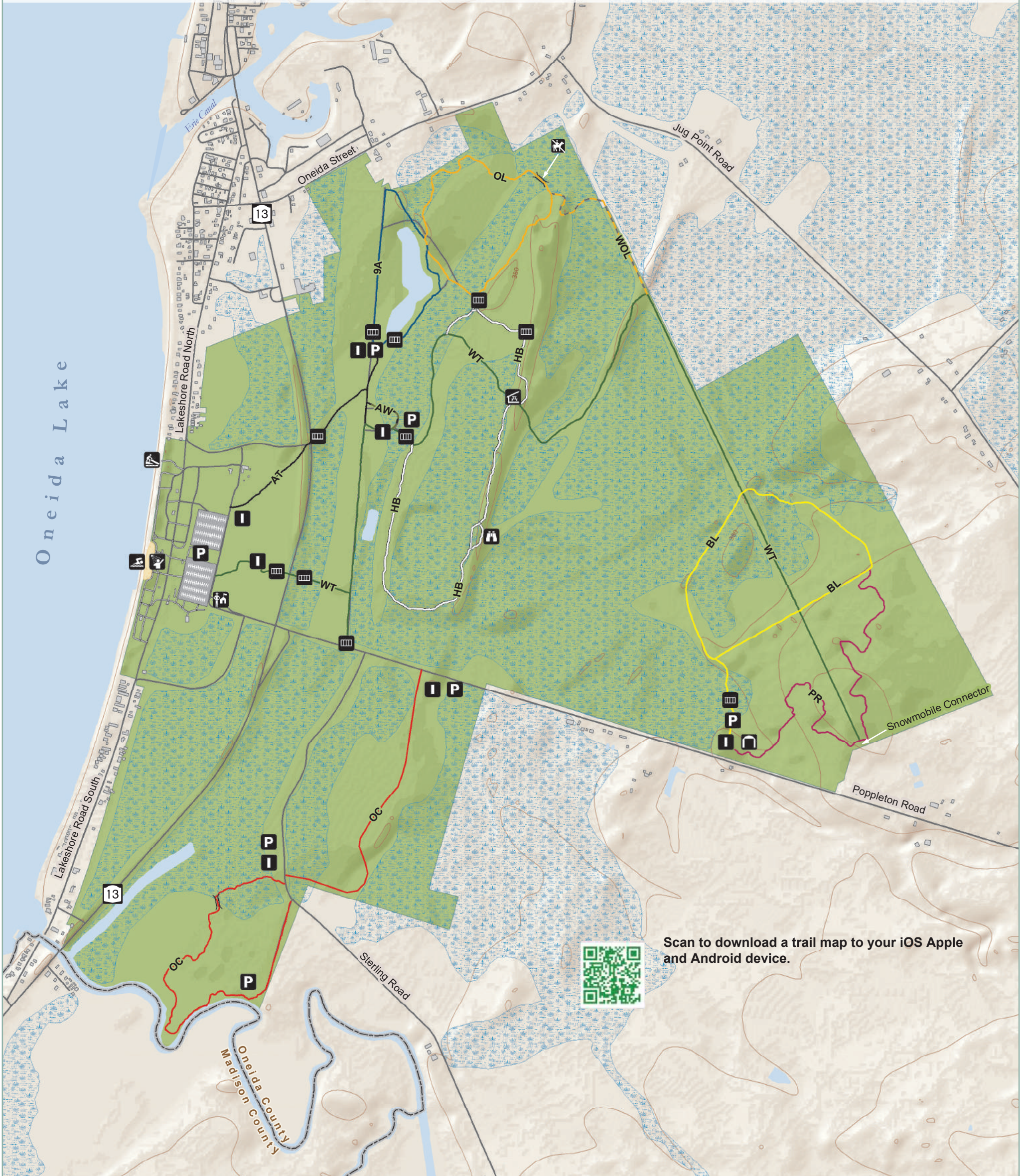
- 9A - 9 Acre Pond Trail - Blue - 0.9 Miles
- AT - Access Trail - Black - 0.7 Miles
- AW - Access Wetlands Cut - Green/Black - 0.15 Miles
- BL - Beaver Lodge Trail - Yellow - 1.6 Miles
- HB - Hog's Back Trail - White - 2.0 Miles
- OC - Oneida Creek Trail - Red - 2.0 Miles
- OL - Owl Loop Trail - Orange - 1.1 Miles
- PR - Pheasant Run - Purple - 1.33 Miles
- WT - Wetlands Trail - Green - 3.5 Miles
- WOL - Wetlands Owl Loop Cut - Orange/Green - 0.5 Miles



Bicycles, equestrians, and cross country skis are permitted on trails at Verona Beach State Park except otherwise noted. Snowmobiles are permitted on the Wetlands Trail.

Please be considerate of other park users. Please report any accident or incident immediately to park police. All boundaries and trails are shown as approximate. Be aware of changing trail conditions.

Map produced by NYSOPRHP GIS Bureau, November 21, 2022.



Scan to download a trail map to your iOS Apple and Android device.