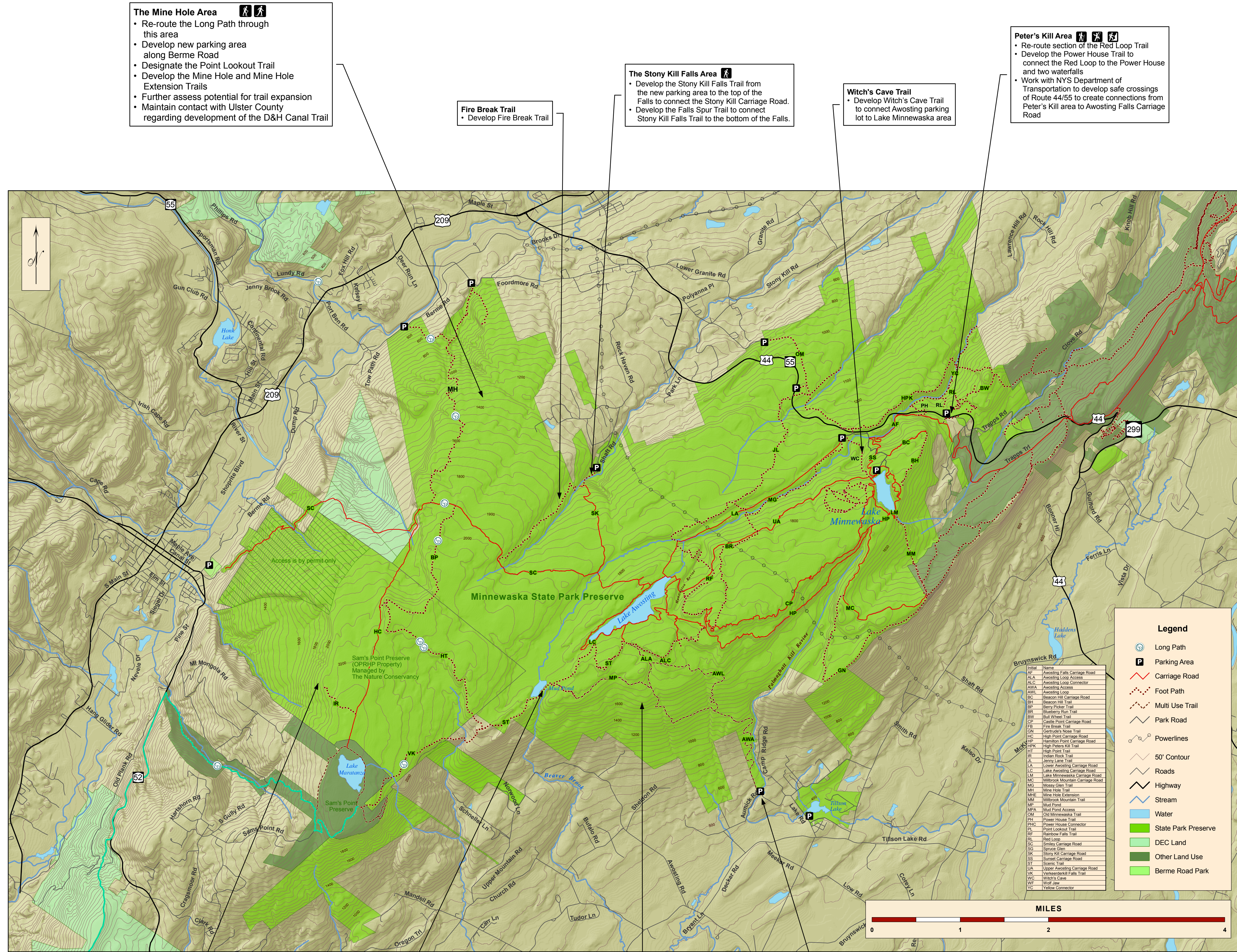


# Final Trails Plan

## Minnewaska State Park Preserve

Map produced by NYSORHP GTR Unit, March 30, 2010.



**The Mine Hole Area**

- Re-route the Long Path through this area
- Develop new parking area along Berne Road
- Designate the Point Lookout Trail
- Develop the Mine Hole and Mine Hole Extension Trails
- Further assess potential for trail expansion
- Maintain contact with Ulster County regarding development of the D&H Canal Trail

**Fire Break Trail**

- Develop Fire Break Trail

**The Stony Kill Falls Area**

- Develop the Stony Kill Falls Trail from the new parking area to the top of the Falls to connect the Stony Kill Carriage Road.
- Develop the Falls Spur Trail to connect Stony Kill Falls Trail to the bottom of the Falls.

**Witch's Cave Trail**

- Develop Witch's Cave Trail to connect Awosting parking lot to Lake Minnewaska area

**Peter's Kill Area**

- Re-route section of the Red Loop Trail
- Develop the Power House Trail to connect the Red Loop to the Power House and two waterfalls
- Work with NYS Department of Transportation to develop safe crossings of Route 44/55 to create connections from Peter's Kill area to Awosting Falls Carriage Road

**General Trail Considerations**

- Maintain trails system for designated uses, including hiking, biking, equestrian, cross-country skiing and snowshoeing
- Conditions assessment for footpaths and wood roads scheduled for 2009
- Restoration of carriage roads to be conducted in conjunction with Mohonk Preserve and Sam's Point Preserve
- Develop a long-term maintenance and monitoring plan to ensure continued sustainability of the trails system.
- Expand interpretive programming.
- Continue coordination with volunteer groups for the maintenance of the trails system.
- Maintain connections to external trail systems
- Explore connection for the Preserve and trails system to mass transit.

**Designated Uses**

- Footpaths:
  - Hiking, Snowshoeing
- Maintained Carriage Roads:
  - Hiking, biking, equestrian, snowshoeing (if ungrooved), and cross country skiing
- Unmaintained Carriage Roads:
  - Hiking, snowshoeing and cross country skiing (High Point Carriage Road only)
- Awosting Reserve Area:
  - Wood Roads trail system:
    - Hiking, biking, equestrian, snowshoeing
  - Single track trails system:
    - Biking

**Sam's Point Preserve**

- Continue working with The Nature Conservancy regarding management of footpaths and carriage roads in Sam's Point Preserve

**Mud Pond Area**

- Re-route of Scenic Trail around Mud Pond

**The Awosting Reserve Area**

- Develop multi-use (hiking, biking, equestrian) trails system utilizing wood roads
- Develop single track, biking only trail system

**Awosting Reserve Parking**

- Construct a 20 vehicle parking lot at the Awosting Reserve entrance road for horse trailers and cars.

**Legend**

- Long Path
- Parking Area
- Carriage Road
- Foot Path
- Multi Use Trail
- Park Road
- Powerlines
- 50' Contour
- Roads
- Highway
- Stream
- Water
- State Park Preserve
- DEC Land
- Other Land Use
- Berne Road Park

Abbrev	Name
ALA	Awosting Falls Carriage Road
ALC	Awosting Look Access
ALD	Awosting Loop
ALW	Awosting Loop
AWA	Awosting Access
AWL	Awosting Loop
AWM	Awosting Main
AWP	Awosting Point
AWR	Awosting Ridge
AWS	Awosting Spur
AWT	Awosting Trail
AWY	Awosting Yard
AWZ	Awosting Zone
AWA	Awosting Access
AWL	Awosting Loop
AWM	Awosting Main
AWP	Awosting Point
AWR	Awosting Ridge
AWS	Awosting Spur
AWT	Awosting Trail
AWY	Awosting Yard
AWZ	Awosting Zone
AWA	Awosting Access
AWL	Awosting Loop
AWM	Awosting Main
AWP	Awosting Point
AWR	Awosting Ridge
AWS	Awosting Spur
AWT	Awosting Trail
AWY	Awosting Yard
AWZ	Awosting Zone

