

**Palmertown Range
Addition to Moreau Lake State Park
Management Plan:
Addendum to the Moreau Lake State Park Master Plan
Saratoga County, Towns of Moreau, Wilton and Corinth
January 13, 2016**



**Parks, Recreation
and Historic Preservation**

Management Plan For Palmertown Range Addition to Moreau Lake State Park January 13, 2016

Towns of Moreau, Wilton and Corinth, Saratoga County
Prepared by

The New York State Office of Parks, Recreation & Historic Preservation

Completed: January 13, 2016
Contact: Alane Ball Chinian, Regional Director
Saratoga – Capital District State Park Region
19 Roosevelt Drive
Saratoga Springs, NY 12886
518-584-2000

Diana Carter, Director
Resource and Facility Planning Bureau
NYS Office of Parks, Recreation and Historic Preservation
625 Broadway, 2nd Floor
Albany, NY 12238
518-486-2909

Email: PalmertownRange.plan@parks.ny.gov

Andrew Cuomo
Governor

Rose Harvey
Commissioner

Table of Contents

Table of Contents	5
Table of Figures	6
Introduction	7
Purpose of the Plan	7
Establishment and Scope of the Plan.....	7
Previous Planning.....	7
Relation to Moreau Lake State Park.....	7
Background.....	8
Document Structure	9
Part 1 - Operation, Management and Maintenance	11
Goals and Objectives.....	11
Agency Mission	11
Agency Guiding Principles.....	11
Management Plan Vision and Goals	11
Vision.....	11
Recreation Goals and Strategies	12
Natural Resource Goals.....	13
Operation Goals	14
Operation, Management and Maintenance	15
Responsible Parties.....	15
Trail Design.....	17
General Guidelines.....	17
Part 2 Existing Conditions	18
Physical Resources	18
Geology	18
Topography	18
Soil	18
Water Resources	19
Wetlands	19
Cultural and Historic Resources	19
Scenic Resources.....	20
Existing Recreation Resources	21
Nearby Parkland and State Forests	21
Community Emergency Services	21
State Environmental Quality Review	21
References	23
Part 3 – Appendices	25
Appendix A – Full Environmental Assessment Form	25

Table of Figures

Figure 1 "Hotel Balmoral, Wilton NY" by Henry Lee	8
Figure 2 Sanatorium on the Mountain	8
Figure 3 Looking East	20
Figure 4 Bird Conservation Area	59
Figure 5 Natural Heritage Area	61
Figure 6 Park Preservation Area	63
Figure 7 Management Areas.....	65
Figure 8 Vicinity Map.....	67
Figure 9 Topography	69

Introduction

Purpose of the Plan

This Management Plan is being prepared as an addendum to the Moreau Lake State Park Master Plan (OPRHP 2006) to provide direction for the operation, management, recreational development and natural resource protection strategies for the next 10-15 years in the Palmertown Range Addition to Moreau Lake State Park (the Park). This addition includes the McGregor, MacKenzie and Clothier acquisitions.

Factors such as budget constraints, changing intensity and type of use, natural disasters and other unforeseen occurrences may necessitate deviations from scheduled management activities.

Establishment and Scope of the Plan

The creation of this addendum was prompted by the recent acquisition of the McGregor parcel, an approximately 763 acre parcel located adjacent to Moreau Lake State Park (the Park) along the Palmertown Range in the Towns of Wilton and Corinth, New York in Saratoga County. Jurisdiction over this parcel was transferred to OPRHP on October 15, 2015 following the closure of the Mount McGregor Correctional Facility in July 2014.

The management recommendations in this document also include the recently acquired adjacent parcels of Clothier (60 acres) and MacKenzie (208 acres). Taken together, the McGregor, Clothier, and MacKenzie parcels comprise 1031 acres and are, collectively, the Palmertown Range Addition to Moreau Lake State Park (the Addition).

This addendum also specifies changes to the natural resource designations in Moreau Lake State Park. (Figures 4 through 7)

Previous Planning

A master plan for the Park (OPRHP, 2006) was completed in 2006 before these new properties were acquired. Parts of this addendum are summaries of information more fully described in the text of the primary master plan.

Relation to Moreau Lake State Park

This management plan refers to lands added to Moreau Lake State Park (the Park) in 2015 by a Transfer of Jurisdiction after the closing of the Mount McGregor correctional facility.

In the 2006 master plan (OPRHP 2006) the Park was divided into several management areas. The Addition has been added to the Palmertown Mountain Management Area and will inherit all the management practices from that area.

A portion (53 acres) of the McGregor acquisition was added to the Grant Cottage State Historic Site which is a separate facility from the Park. This addendum does not include information on the management of the historic site except.

Background

Mt. McGregor, originally called "Palmertown Mountain," was renamed after Duncan McGregor purchased the land on a tax sale and built a hotel called the Mountain House in 1878. Later the *Saratoga, Mount McGregor, and Lake George Railroad* bought the property and opened the Hotel Balmoral, a more sumptuous resort, at the end of the rail line. When the hotel burned in 1897, the resort faded in popularity.

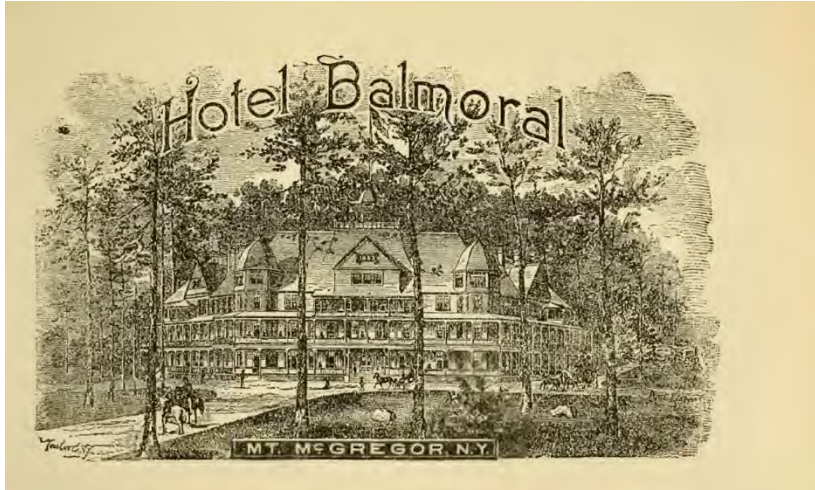


Figure 1 "Hotel Balmoral, Wilton NY" by Henry Lee

In 1913 The Metropolitan Life Insurance Company opened the "Sanatorium on the Mountain" at Mount McGregor for the benefit of its employees suffering from tuberculosis. This sanatorium, fully staffed by doctors and a nursing staff, had a goal of restoring the health of all the company's employees. A labyrinth of underground passages, which were used to transport the bodies of patients who died to the

church and crematorium, still exists. The sanatorium closed in 1945 as the threat of tuberculosis declined.

After World War II, the sanatorium served as a rest facility for military veterans returning to civilian life.

In the 1960s the facility was taken over by the State of New York as a school for the developmentally disabled. At first the school was the Mount McGregor division of Rome State School and later became Wilton State School.

In the 1970s the facility was taken over by the New York State Department of Corrections and Community Supervision (DOCCS). In 2014 New York State decided to close the Mount McGregor Correctional Facility.

Along with the shuttered buildings are approximately 1200 acres of undeveloped land of which approximately 763 acres have been transferred to the Office of Parks, Recreation and Historic Preservation (OPRHP). The remaining acreage is under the



Figure 2 Sanatorium on the Mountain

jurisdiction of Empire State Development which released a request for proposals (RFP) in June of 2015 to attract possible developers.

Landlocked in the OPRHP land is Lake Bonita, which was used as a water source for the sanatorium and never transferred to the DOCCS from the then Office of Mental Retardation and Developmental Disabilities (now The New York State Office for People with Developmental Disabilities (OPWDD)). The jurisdiction of Lake Bonita is also planned to be transferred to OPRHP.

The Ulysses S. Grant Cottage, a state historic site, is located on the property as well. This document does not include management of that property. (Figure 1 – Vicinity) For more information on Grant Cottage see the website <http://www.grantcottage.org>.

Document Structure

This document is divided into three (3) parts. Part 1 is a description of the operation, maintenance and management of the acquisition. It includes sections on goals and objectives and specific strategies for various aspects of Park operation, management and maintenance.

Part 2 consists of background information about the physical, natural, scenic, cultural and historic resources in the Addition. This information was used in the development of the strategies in the first part.

Part 3 is an Appendix with the Full Environmental Assessment Form which is under development.

Part 1 - Operation, Management and Maintenance

Goals and Objectives

Agency Mission

The mission of the Office of Parks, Recreation and Historic Preservation is to provide safe and enjoyable recreational and interpretive opportunities for all New York State residents and visitors and to be responsible stewards of our valuable natural, historic and cultural resources.

Agency Guiding Principles

Fundamental to the successful achievement of our mission is the dedication of our employees and the adherence to a common set of values. These guiding principles serve as a pledge to the people we serve and a commitment to ourselves and to each other.

- A **Commitment to People**. We are committed to serving and protecting the public to the best of our ability, with courtesy and respect. We are committed to our employees and volunteers, encouraging teamwork, self-improvement and mutual support.
- A **Commitment to Preservation**. State Parks and Historic Sites are unique and irreplaceable public assets. We are committed to wise acquisition, planning, and, where appropriate, development; timely and professional care and maintenance; and a responsibility to future generations in whose trust we manage our resources. We are committed to providing encouragement to all agencies and individuals to identify, evaluate and protect recreational, natural, historic and cultural resources.
- A **Commitment to Service**. The availability of recreational, educational and cultural opportunities to all is vital in today's society. We are committed to equal access and outreach to all segments of our society, recognizing individual needs and interests. We are committed to safety, security, creativity and accountability in providing our programs and services.
- A **Commitment to Leadership**. We recognize the preeminence of the New York State Park and Historic Site System. We are committed to excellence, innovation and professionalism. We are committed to forging partnerships with others who are responsible for providing recreational, natural, historic and cultural services.

Management Plan Vision and Goals

Vision

The Palmertown Range Addition to the Park will be considered an extension of the existing Palmertown Mountain Management Area as described in the Moreau Lake

State Park Master Plan (OPRHP 2016). That master plan is available online at the following URL <http://www.nysparks.com/inside-our-agency/master-plans.aspx>.

All visions, natural resource protections and recreation development recommended for the PMMA will now extend into the new acquisitions.

Recreation Goals and Strategies

Goal #1 - Provide access to recreation opportunities

Strategies

- Access and parking will be provided primarily from Wilton Mountain Road. (See Draft Management Plan Map) The new land can also be accessed by existing parking areas and trails originating within Moreau Lake State Park. The existing road (Mount McGregor Road) which traverses former prison property still held by New York State for redevelopment will offer an additional access opportunity upon adaptive reuse of the prison.
- Principles of universal design will be used wherever possible

Goal #2 - Provide limited, primitive, walk in camping opportunities

Strategies

- A limited number of primitive sites can be made available on the Eastern and Western Ridge Trails which will connect to a planned through trail
- Utilize lean-to as primitive camping shelter and rehab as necessary
- There will be no provision of water or electricity at these sites
- Provide outhouses at the primitive camping sites

Goal #3 - Offer fishing opportunities on Lake Bonita

Strategies

- Fishing will be available from designated points on the lake shore
- To protect the lake's ecosystem no live bait will be allowed

Goal #4 - Implement a system of non-motorized multi-use, sustainably designed trails that will connect to the trail system in the rest of Moreau Lake State Park, to Grant Cottage and to planned regional trails outside the park

Strategies

- All trails will be single track, non-motorized, multi-use trails
- Possible uses of the trails will include nature activities such as birding, bicycling, hiking, equestrian, and non-motorized winter sports
- A trail connecting Grant Cottage with the trail system will be developed

- Trails will be designed using universal design principles wherever possible

Goal #5 - Provide protection for sensitive bog islands in Lake Bonita

Strategies

- Install interpretive signage at north and south ends of the lake describing the origins, sensitivity and value of the bog islands and why it is important to preserve them
- To prevent patrons from walking on or otherwise impacting the bog islands, boats, including kayaks, canoes, row boats, other human powered and motorized craft will be excluded from use on Lake Bonita

Goal #6 - Allow hunting on a permit basis

Strategies

- Hunting is a permitted activity in the Park. Hunting, in season, will be allowed in the new acquisition, except for the trail corridor between Lake Ann and Grant Cottage, with the same permitting process as in all other management areas of the Park where hunting is allowed.
- Hunters will be provided with a map showing the excluded area between Lake Ann and Grant Cottage

Natural Resource Goals

The natural resources of the Addition will be preserved and protected and all natural resource goals and strategies in the PMMA will be extended to the new Addition.

Goal #7 - Change the boundaries of the existing Natural Heritage Area (NHA), Park Preservation Area (PPA) and Bird Conservation Area (BCA) in Moreau Lake State Park to reflect the new park boundaries

Strategies

- Adjust the boundaries of the Bird Conservation Area in the Park to include the entire park and the Addition. (see figure 4)
- Adjust the boundaries of the Natural Heritage Area to include the new Additions. (see figure 5)
- Adjust the Park Preservation Area of the existing Palmertown Mountain Management Area to include the entire Addition excluding the Grant Cottage State Historic Site (see figure 6)
- The Addition is to be added to the existing PMMA (see figure 7)

Goal #8 - Design a trail around Lake Bonita that provides recreational access while also protecting the integrity of the lake ecosystem

Strategies

- Provide a buffer around the lake except for a limited number of trail spurs that go nearer to the lake shore for visibility of the lake
- Shoreline access will be limited to designated access points on the shore at rocky outcrops
- Install interpretive signage periodically to educate trail users about the importance and sensitivity of the ecosystem of Lake Bonita

Goal #9 - Protect the water quality of Lake Ann and Lake Bonita

Strategies

- Provide education to park users to mitigate impacts to the lakes
 - Inform people about the ecosystems on the bog islands and why access to them is prohibited through interpretive signage and other means such as leaflets and environmental education sessions
 - Inform people about the lack of aquatic invasives in the lake and provide information on how they can participate in aquatic invasives control activities
- Provide park users with information about the importance of not moving Bass from Lake Bonita to Lake Ann
- Provide education about unique qualities of Lake Ann
- The existing dock near the pump house at the southeast end of the lake will be removed. The stairs will remain in order to access the pump house.

Goal #10 - Provide protection for threatened and endangered animals and plants

Strategies

- Educate the public about Northern Hognose snakes which may be present in the new acquisitions

Operation Goals

Goal #11 - The new acquisitions will be open to the general public in the same hours as the main park

Strategy

- As part of Moreau Lake State Park the operating hours will reflect those used in the Park in general

Goal #12 – Toilet facilities may be provided at parking areas

Strategies

- Portable toilets may be placed at parking areas to meet demand
- If demand is shown to be high, solar powered composting toilets may be installed at parking areas in the future

Goal #13 – Appropriate access points will be established

Strategies

- The existing road from Wilton Mountain Road to Lake Bonita will be used for maintenance only (see Management Area Plan Map)
- A second gate and parking area on Wilton Road will be established for general public access (see Management Area Plan Map)
- When the disposition of the remaining former prison property is resolved, a gate and public parking area will be established at the entrance to the new addition on the gravel road from Mount MacGregor Road (see Management Area Plan Map)

Goal #14 – Vehicular, bicycle and pedestrian access to Grant Cottage will be maintained

Strategy

- Trail access from Lake Ann to the new addition will be developed

Goal #16 - Develop a signage plan

Strategies

- Place information kiosks at parking areas
- Install visually consistent welcome, orientation, wayfinding, interpretive, and policy signage at the entrances

Goal #17 – Maintenance Shed

Strategies

- The existing cinder block building acquired through the MacKenzie acquisition will be repurposed for on-mountain maintenance functions such as equipment and material storage

Operation, Management and Maintenance

Responsible Parties

The Addition will become part of Moreau Lake State Park and its operation and management will fall under the responsibilities of the park staff and regional management.

Groups such as members of the Saratoga Mountain Bike Association, Friends of Moreau Lake State Park, Friends of Grant Cottage, Audubon Society Southern ADK Chapter and others may be invited to provide volunteers for special or ongoing projects.

Trail Design

Trails will be single track, non-motorized, multi-use trails. The final routing of trails will be done on site following the guidance of OPRHP biologists.

General Guidelines

Wherever possible recreational development will reflect the character of and will be integrated into the landscape. Grading and landform modifications will be as minimal as possible. Accommodations for visitor use such as comfort facilities, benches, kiosks, signage, parking and trailheads will also be subordinate to the natural characteristics of the landscape.

Part 2 Existing Conditions

The Palmertown Range Addition to Moreau Lake State Park is located in Saratoga County. It includes lands that are part of the Towns of Moreau, Wilton and Corinth. (Figure 8)

Unless otherwise noted, the information in this section is summarized from the 2006 Moreau Lake Master Plan (OPRHP 2006) which can be accessed at the following URL: <http://www.nysparks.com/inside-our-agency/master-plans.aspx>.

Physical Resources

Geology

New York State was impacted by glaciation several times during the Pleistocene Epoch (2.6 Million to 11,700 years ago). Glacial deposits found in the area of the state covered by the Hudson Mohawk sheet (NYSED 1970) are almost entirely of the late Wisconsinan glaciation. In the Town of Wilton these deposits consist generally of dunes, lacustrine sands, lacustrine silt and clay and a small area of kame moraine. In the area west of Route 9 (Palmertown Range) bedrock is exposed.

Bedrock Geology. Based on a review of the "Geologic Map of New York- Hudson-Mohawk Sheet" (NYSED, 1970), the bedrock is almost entirely Canajoharie Shale with parts underlain by dolostone and limestone.

Surface Geology. Mostly till of variable texture (boulders to silt), usually poorly sorted sand rich diamict deposited under glacier ice. Permeability varies with compaction. The thickness is variable – 1 to 50 meters (3 ¼ to 164 feet). The surface also has areas of bedrock outcroppings.

Topography

The current topographic conditions prevalent in this region are extremely irregular and developed primarily as a result of the glacio-fluvial activities during the waning stages of the Wisconsin Glacial Epoch and the stabilization of the drainage patterns from Glacial Lakes Iroquois and Albany and the Proto-Mohawk River. The area is very variable and inconsistent topographically exhibiting a variation of topographic conditions ranging from gentle slopes (2% to 9%) to steep slopes with gradients up to 37%.

Elevations generally increase towards the northwest. Several peaks and plateaus in the Palmertown Range reach an elevation over 1100 feet MSL. Topographic relief levels out near the eastern limits of the Park, which consist of rolling to undulating hills, formed from glacio-fluvial and alluvial soils along the Spier Falls Road and Mountain Road. (Figure 9)

Soil

This relatively steep area has three primary soil series, Charlton loam, and two Chatfield-Hollis complexes. Charlton loam is a very deep well-drained soil formed in

glacial till. It is found on the sides and tops of hills in glacially modified uplands. The Chatfield-Hollis complexes are made up of moderately deep, well drained to somewhat excessively drained soils and shallow, well-drained soils. It is on bedrock controlled upland till plains. These series occur where the surface topography is often irregular and sloping in many different directions because of the underlying bedrock.

Water Resources

Lakes

Lake Bonita is the most significant water resource on the property. It is presently a dammed man-made lake but may have at one time been a natural lake which was a boggy depression (hence the bog islands which persist today.) The lake was originally dammed to be the source of drinking water for the Metropolitan Life tuberculosis sanitarium. It was later enlarged further through raising the top of the dam, to be the drinking water source for the McGregor Correctional Facility.

Lake Ann is a small, bog-like lake approximately one acre in size. Lake Ann was identified by the Natural Heritage Program report as a bog lake community. Bog lakes are typically low in all types of aquatic organisms, including fish. Many bog lakes have no fish at all most likely due to the highly acidic water (Reschke, 1990). Water samples and sites visits to Lake Ann indicate that the lake is very acidic (pH 4.3) and has brown stained water that is low in nutrients and oxygen. A floating mat of vegetation that contains black humus rims the lake. Although peat mosses (*Sphagnum* spp) are most prevalent, many other bog plants can be found at Lake Ann. It is currently accessible to the public from a park trail. It is not used for water supplies or for recreational purposes.

Streams

Beaver Brook is the outflow stream from Lake Bonita. It flows in a northwesterly direction from the dam site and into Stony Creek which flows into the Hudson River. Beaver Brook, as well as other, smaller, un-named streams are classified by NYS DEC as “C”, suitable for fishing and contact recreation.

Wetlands

According to the DEC Environmental Resource Mapper website (<http://www.dec.ny.gov/imsmaps/ERM/viewer.htm>) there are no New York State regulated wetlands on this site. National Wetland Inventory (NWI) wetlands are present on the site. (see Management Plan Map)

Cultural and Historic Resources

The Moreau Lake State Park Master Plan (OPRHP, 2006) contains a summary of cultural and historic resources associated with the Park. Previous studies have identified several archaeological sites (both prehistoric and historic) within the Park. These studies also indicate a moderate to high potential for additional, as yet unidentified, prehistoric sites within the Park’s boundaries.

None of the previous cultural resource surveys encompassed the lands associated with the Clothier, Mackenzie or McGregor land acquisitions (the Palmertown Range Addition). Given their similar topography as well as their proximity to water and other natural resources, these three land parcels are expected to have the same moderate to high potential for the presence of prehistoric archaeological sites. A limited review of topographic maps dating from the late 19th and early 20th centuries did not reveal any significant historical development within the Clothier or Mackenzie parcels.

The McGregor parcel includes part of the former Metropolitan Life Insurance Company Sanatorium. The Sanatorium, which was developed and expanded between 1910 and 1945, has been determined eligible for listing in the State and National Registers of Historic Places for its association with developments in social history, health/medicine, and institutional architecture (DHP Resource Evaluation Form; February 19, 2015). The boundaries of this eligible historic district include all of the land that was subsequently acquired by the State of New York and commonly known as the Mount McGregor Correctional Facility. The two-story frame residence known as Grant Cottage (which is located within the boundaries of the Metropolitan Life Insurance Company Sanatorium historic district) was listed in the National Register of Historic Places in 1971 for its association with General Ulysses S. Grant. (The visitor center is a contributing historic building associated with the Sanatorium's historic district).

The majority of the historic buildings and structures associated with the Sanatorium are located on the portion of the former Mount McGregor Correctional Facility that is under the jurisdiction of the Empire State Development Corporation. A notable exception is the pump house at Lake Bonita. Lake Anne and Lake Bonita are cited as contributing features of the Sanatorium's designed landscape along with a network of carriage roads and small formal gardens, some of which may extend into the Palmertown Range Addition. There is also physical evidence of one or more former carriage roads along the eastern escarpment that runs between Grant Cottage and Lake Anne.

Scenic Resources

Although the scenic resources in the Addition are limited to short range views of Lake Bonita and the woodlands, trails that will be developed in this area will connect with very scenic opportunities in other parts of the Park. From the Western Ridge trail there are a number of scenic overlooks that provide expansive views of the Hudson River, the foothills of the Adirondacks and the forested park land on the Hudson River's north shore. As mentioned in the Historic Resources section of this document, views to the North, East and South are available at the Grant Cottage overlook (Figure 3) which will connect to the rest of the Addition by trail.



Figure 3 Looking East

Existing Recreation Resources

Hiking, Fishing and Hunting are the current major summer recreation opportunities in the new additions. Snowshoeing, cross country skiing and winter hiking are available in the winter months.

The rest of the Park has abundant recreation resources such as camping, swimming, boating, winter activities and more. These resources are well described in the master plan for Moreau Lake State Park. (OPRHP 2006)

Nearby Parkland and State Forests

Approximately 3 miles to the southwest in the town of Greenfield is Lincoln Mountain State Forest which is approximately 993 forested acres with a 2 mile main trail and other shorter trail offshoots which are remnants of earlier roads. The Management Plan map shows a proposed trail that could possibly provide part of a connector trail to Lincoln Mountain State Forest. (see Management Plan Map)

Community Emergency Services

First responder to emergencies is the New York State Park Police.

These parcels fall within the towns of Moreau and Corinth which also have fire and EMT services. Fire service in the Town of Moreau is supplied by the South Glens Falls Fire Company. In Corinth services are supplied by Corinth Volunteer Fire Department.

State Environmental Quality Review

This management plan is accompanied by a Full Environmental Assessment Form ([Appendix A](#)). The form indicates that the plan is a Type 1 action and assigns a negative declaration.

References

- NYSED. (1970). *Surficial Geologic Map of New York State - Hudson-Mohawk Sheet*. (New York State Department of Education) Retrieved 2015, from https://www.nysm.nysed.gov/gis/surficial_scans/surf_hudsonmohawk.jpg
- OPRHP. (2006). *Moreau Lake State Park Final Master Plan/Final Environmental Impact Statement*. Albany: Office of Parks, Recreation and Historic Preservation.
- OPRHP. (2015). *Cultural Resource Information System*. Retrieved 2015, from <https://cris.parks.ny.gov>
- Reschke, C. (1990). *Ecological Communities of New York State*. Albany: New York State Natural Heritage Program, NYS DEC.

Part 3 – Appendices

Appendix A – Full Environmental Assessment Form

Palmertown Range Addition to Moreau Lake State Park
 Management Plan – Master Plan Addendum
 Part 3 – Appendices – Appendix A Full Environmental Assessment Form

*Full Environmental Assessment Form
 Part 1 - Project and Setting*

Instructions for Completing Part 1

Part 1 is to be completed by the applicant or project sponsor. Responses become part of the application for approval or funding, are subject to public review, and may be subject to further verification.

Complete Part 1 based on information currently available. If additional research or investigation would be needed to fully respond to any item, please answer as thoroughly as possible based on current information; indicate whether missing information does not exist, or is not reasonably available to the sponsor; and, when possible, generally describe work or studies which would be necessary to update or fully develop that information.

Applicants/sponsors must complete all items in Sections A & B. In Sections C, D & E, most items contain an initial question that must be answered either “Yes” or “No”. If the answer to the initial question is “Yes”, complete the sub-questions that follow. If the answer to the initial question is “No”, proceed to the next question. Section F allows the project sponsor to identify and attach any additional information. Section G requires the name and signature of the project sponsor to verify that the information contained in Part 1 is accurate and complete.

A. Project and Sponsor Information.

Name of Action or Project: Adoption and Implementation of the Management Plan for the Palmertown Range Addition to Moreau Lake State Park		
Project Location (describe, and attach a general location map): Towns of Moreau, Wilton and Corinth, Saratoga County. See attached map.		
Brief Description of Proposed Action (include purpose or need): This Management Plan was prepared to provide direction for the operation, management, recreational development and natural resource protection strategies for the next 10-15 years in the Palmertown Range Addition to Moreau Lake State Park. This addition includes the McGregor, MacKenzie and Clothier acquisitions. The creation of this plan was prompted by the recently acquired McGregor parcel, an approximately 750 acre parcel located adjacent to the Moreau Lake State Park (the Park) along the Palmertown Range in the Town of Wilton, New York in Saratoga County. This parcel was transferred to OPRHP in October of 2015 after the closing of the Mount McGregor Correctional Facility in 2014. The scope of this document also includes management recommendations for two other recently acquired adjacent parcels totaling 268 acres, as well as management changes to the adjacent areas of the Park. The plan calls for providing public access to the parcels through the addition of two parking areas each approximately 100'x60' connected to Wilton Mountain Road and McGregor Mountain Road. The plan also calls for approximately 7 miles of new trails connecting to the existing Park trail system. Finally, the plan includes designations of the new park areas as Bird Conservation Areas, Natural Heritage Areas and Park Preservation Areas and extensions of these designations into some new areas of Moreau Lake State Park.		
Name of Applicant/Sponsor: NYS Office of Parks, Recreation and Historic Preservation	Telephone: 518-486-2909	E-Mail: palmertownrange.plan@parks.ny.gov
Address: 625 Broadway		
City/PO: Albany	State: NY	Zip Code: 12207
Project Contact (if not same as sponsor, give name and title/role): Salim Chishti, Park Planner	Telephone: 517-474-6722	E-Mail: salim.chishti@parks.ny.gov
Address: OPRHP, Planning Bureau, 625 Broadway		
City/PO: Albany	State: NY	Zip Code: 12207
Property Owner (if not same as sponsor):	Telephone:	E-Mail:
Address:		
City/PO:	State:	Zip Code:

Palmertown Range Addition to Moreau Lake State Park
 Management Plan – Master Plan Addendum
 Part 3 – Appendices – Appendix A Full Environmental Assessment Form

B. Government Approvals

B. Government Approvals, Funding, or Sponsorship. ("Funding" includes grants, loans, tax relief, and any other forms of financial assistance.)		
Government Entity	If Yes: Identify Agency and Approval(s) Required	Application Date (Actual or projected)
a. City Council, Town Board, <input type="checkbox"/> Yes <input checked="" type="checkbox"/> No or Village Board of Trustees		
b. City, Town or Village <input type="checkbox"/> Yes <input checked="" type="checkbox"/> No Planning Board or Commission		
c. City Council, Town or <input type="checkbox"/> Yes <input checked="" type="checkbox"/> No Village Zoning Board of Appeals		
d. Other local agencies <input type="checkbox"/> Yes <input checked="" type="checkbox"/> No		
e. County agencies <input type="checkbox"/> Yes <input checked="" type="checkbox"/> No		
f. Regional agencies <input type="checkbox"/> Yes <input checked="" type="checkbox"/> No		
g. State agencies <input type="checkbox"/> Yes <input checked="" type="checkbox"/> No		
h. Federal agencies <input type="checkbox"/> Yes <input checked="" type="checkbox"/> No		
i. Coastal Resources.		
i. Is the project site within a Coastal Area, or the waterfront area of a Designated Inland Waterway?		<input type="checkbox"/> Yes <input checked="" type="checkbox"/> No
ii. Is the project site located in a community with an approved Local Waterfront Revitalization Program?		<input type="checkbox"/> Yes <input checked="" type="checkbox"/> No
iii. Is the project site within a Coastal Erosion Hazard Area?		<input type="checkbox"/> Yes <input checked="" type="checkbox"/> No

C. Planning and Zoning

C.1. Planning and zoning actions.	
Will administrative or legislative adoption, or amendment of a plan, local law, ordinance, rule or regulation be the only approval(s) which must be granted to enable the proposed action to proceed? <input type="checkbox"/> Yes <input checked="" type="checkbox"/> No	
<ul style="list-style-type: none"> • If Yes, complete sections C, F and G. • If No, proceed to question C.2 and complete all remaining sections and questions in Part 1 	
C.2. Adopted land use plans.	
a. Do any municipally- adopted (city, town, village or county) comprehensive land use plan(s) include the site where the proposed action would be located?	<input checked="" type="checkbox"/> Yes <input type="checkbox"/> No
If Yes, does the comprehensive plan include specific recommendations for the site where the proposed action would be located?	<input type="checkbox"/> Yes <input checked="" type="checkbox"/> No
b. Is the site of the proposed action within any local or regional special planning district (for example: Greenway Brownfield Opportunity Area (BOA); designated State or Federal heritage area; watershed management plan; or other?)	<input checked="" type="checkbox"/> Yes <input type="checkbox"/> No
If Yes, identify the plan(s): NYS Heritage Areas: Mohawk Valley Heritage Corridor _____ _____ _____	
c. Is the proposed action located wholly or partially within an area listed in an adopted municipal open space plan, or an adopted municipal farmland protection plan?	<input type="checkbox"/> Yes <input checked="" type="checkbox"/> No
If Yes, identify the plan(s): _____ _____ _____	

Palmertown Range Addition to Moreau Lake State Park
 Management Plan – Master Plan Addendum
 Part 3 – Appendices – Appendix A Full Environmental Assessment Form

C.3. Zoning	
a. Is the site of the proposed action located in a municipality with an adopted zoning law or ordinance. If Yes, what is the zoning classification(s) including any applicable overlay district? Recreation. However, NYS Parks is not subject to local zoning regulations.	<input checked="" type="checkbox"/> Yes <input type="checkbox"/> No
b. Is the use permitted or allowed by a special or conditional use permit?	<input type="checkbox"/> Yes <input type="checkbox"/> No
c. Is a zoning change requested as part of the proposed action? If Yes, i. What is the proposed new zoning for the site?	<input type="checkbox"/> Yes <input checked="" type="checkbox"/> No
C.4. Existing community services.	
a. In what school district is the project site located? n/a	
b. What police or other public protection forces serve the project site? State Park Police	
c. Which fire protection and emergency medical services serve the project site? Towns of Moreau, Wilton and Corinth	
d. What parks serve the project site? Moreau Lake State Park	

D. Project Details

D.1. Proposed and Potential Development	
a. What is the general nature of the proposed action (e.g., residential, industrial, commercial, recreational; if mixed, include all components)?	Recreation and natural resource preservation
b. a. Total acreage of the site of the proposed action?	1031 acres
b. Total acreage to be physically disturbed?	2 acres
c. Total acreage (project site and any contiguous properties) owned or controlled by the applicant or project sponsor?	5561 acres
c. Is the proposed action an expansion of an existing project or use? i. If Yes, what is the approximate percentage of the proposed expansion and identify the units (e.g., acres, miles, housing units, square feet)?	<input checked="" type="checkbox"/> Yes <input type="checkbox"/> No % 20 Units: acres
d. Is the proposed action a subdivision, or does it include a subdivision? If Yes, i. Purpose or type of subdivision? (e.g., residential, industrial, commercial; if mixed, specify types)	<input type="checkbox"/> Yes <input checked="" type="checkbox"/> No
ii. Is a cluster/conservation layout proposed?	<input type="checkbox"/> Yes <input type="checkbox"/> No
iii. Number of lots proposed?	
iv. Minimum and maximum proposed lot sizes? Minimum Maximum	
e. Will proposed action be constructed in multiple phases? i. If No, anticipated period of construction:	<input type="checkbox"/> Yes <input checked="" type="checkbox"/> No 36 months
ii. If Yes:	
• Total number of phases anticipated	
• Anticipated commencement date of phase 1 (including demolition)	month year
• Anticipated completion date of final phase	month year
• Generally describe connections or relationships among phases, including any contingencies where progress of one phase may determine timing or duration of future phases:	

Palmertown Range Addition to Moreau Lake State Park
 Management Plan – Master Plan Addendum
 Part 3 – Appendices – Appendix A Full Environmental Assessment Form

f. Does the project include new residential uses? <input type="checkbox"/> Yes <input checked="" type="checkbox"/> No If Yes, show numbers of units proposed. <div style="display: flex; justify-content: space-around; margin-top: 5px;"> <u>One Family</u> <u>Two Family</u> <u>Three Family</u> <u>Multiple Family (four or more)</u> </div> <table style="width: 100%; border-collapse: collapse; margin-top: 5px;"> <tr> <td style="width: 25%; padding: 2px;">Initial Phase</td> <td style="width: 25%; border-bottom: 1px solid black;"></td> <td style="width: 25%; border-bottom: 1px solid black;"></td> <td style="width: 25%; border-bottom: 1px solid black;"></td> </tr> <tr> <td style="padding: 2px;">At completion of all phases</td> <td style="border-bottom: 1px solid black;"></td> <td style="border-bottom: 1px solid black;"></td> <td style="border-bottom: 1px solid black;"></td> </tr> </table>	Initial Phase				At completion of all phases			
Initial Phase								
At completion of all phases								
g. Does the proposed action include new non-residential construction (including expansions)? <input type="checkbox"/> Yes <input checked="" type="checkbox"/> No If Yes, i. Total number of structures _____ ii. Dimensions (in feet) of largest proposed structure: _____ height; _____ width; and _____ length iii. Approximate extent of building space to be heated or cooled: _____ square feet								
h. Does the proposed action include construction or other activities that will result in the impoundment of any liquids, such as creation of a water supply, reservoir, pond, lake, waste lagoon or other storage? <input type="checkbox"/> Yes <input checked="" type="checkbox"/> No If Yes, i. Purpose of the impoundment: _____ ii. If a water impoundment, the principal source of the water: <input type="checkbox"/> Ground water <input type="checkbox"/> Surface water streams <input type="checkbox"/> Other specify: _____ iii. If other than water, identify the type of impounded/contained liquids and their source. _____ iv. Approximate size of the proposed impoundment. Volume: _____ million gallons; surface area: _____ acres v. Dimensions of the proposed dam or impounding structure: _____ height; _____ length vi. Construction method/materials for the proposed dam or impounding structure (e.g., earth fill, rock, wood, concrete): _____								
D.2. Project Operations								
a. Does the proposed action include any excavation, mining, or dredging, during construction, operations, or both? (Not including general site preparation, grading or installation of utilities or foundations where all excavated materials will remain onsite) <input type="checkbox"/> Yes <input checked="" type="checkbox"/> No If Yes: i. What is the purpose of the excavation or dredging? _____ ii. How much material (including rock, earth, sediments, etc.) is proposed to be removed from the site? <ul style="list-style-type: none"> • Volume (specify tons or cubic yards): _____ • Over what duration of time? _____ iii. Describe nature and characteristics of materials to be excavated or dredged, and plans to use, manage or dispose of them. _____ _____ iv. Will there be onsite dewatering or processing of excavated materials? <input type="checkbox"/> Yes <input type="checkbox"/> No If yes, describe. _____ _____ v. What is the total area to be dredged or excavated? _____ acres vi. What is the maximum area to be worked at any one time? _____ acres vii. What would be the maximum depth of excavation or dredging? _____ feet viii. Will the excavation require blasting? <input type="checkbox"/> Yes <input type="checkbox"/> No ix. Summarize site reclamation goals and plan: _____ _____ _____								
b. Would the proposed action cause or result in alteration of, increase or decrease in size of, or encroachment into any existing wetland, waterbody, shoreline, beach or adjacent area? <input type="checkbox"/> Yes <input checked="" type="checkbox"/> No If Yes: i. Identify the wetland or waterbody which would be affected (by name, water index number, wetland map number or geographic description): _____ _____								

Palmertown Range Addition to Moreau Lake State Park
 Management Plan – Master Plan Addendum
 Part 3 – Appendices – Appendix A Full Environmental Assessment Form

ii. Describe how the proposed action would affect that waterbody or wetland, e.g. excavation, fill, placement of structures, or alteration of channels, banks and shorelines. Indicate extent of activities, alterations and additions in square feet or acres:

iii. Will proposed action cause or result in disturbance to bottom sediments? Yes No
 If Yes, describe: _____

iv. Will proposed action cause or result in the destruction or removal of aquatic vegetation? Yes No
 If Yes:
 • acres of aquatic vegetation proposed to be removed: _____
 • expected acreage of aquatic vegetation remaining after project completion: _____
 • purpose of proposed removal (e.g. beach clearing, invasive species control, boat access): _____
 • proposed method of plant removal: _____
 • if chemical/herbicide treatment will be used, specify product(s): _____

v. Describe any proposed reclamation/mitigation following disturbance: _____

c. Will the proposed action use, or create a new demand for water? Yes No
 If Yes:
i. Total anticipated water usage/demand per day: _____ gallons/day
ii. Will the proposed action obtain water from an existing public water supply? Yes No
 If Yes:
 • Name of district or service area: _____
 • Does the existing public water supply have capacity to serve the proposal? Yes No
 • Is the project site in the existing district? Yes No
 • Is expansion of the district needed? Yes No
 • Do existing lines serve the project site? Yes No
iii. Will line extension within an existing district be necessary to supply the project? Yes No
 If Yes:
 • Describe extensions or capacity expansions proposed to serve this project: _____
 • Source(s) of supply for the district: _____
iv. Is a new water supply district or service area proposed to be formed to serve the project site? Yes No
 If, Yes:
 • Applicant/sponsor for new district: _____
 • Date application submitted or anticipated: _____
 • Proposed source(s) of supply for new district: _____
v. If a public water supply will not be used, describe plans to provide water supply for the project: _____
vi. If water supply will be from wells (public or private), maximum pumping capacity: _____ gallons/minute.

d. Will the proposed action generate liquid wastes? Yes No
 If Yes:
i. Total anticipated liquid waste generation per day: _____ gallons/day
ii. Nature of liquid wastes to be generated (e.g., sanitary wastewater, industrial; if combination, describe all components and approximate volumes or proportions of each): _____

iii. Will the proposed action use any existing public wastewater treatment facilities? Yes No
 If Yes:
 • Name of wastewater treatment plant to be used: _____
 • Name of district: _____
 • Does the existing wastewater treatment plant have capacity to serve the project? Yes No
 • Is the project site in the existing district? Yes No
 • Is expansion of the district needed? Yes No

Palmertown Range Addition to Moreau Lake State Park
 Management Plan – Master Plan Addendum
 Part 3 – Appendices – Appendix A Full Environmental Assessment Form

<ul style="list-style-type: none"> • Do existing sewer lines serve the project site? _____ • Will line extension within an existing district be necessary to serve the project? If Yes: <ul style="list-style-type: none"> • Describe extensions or capacity expansions proposed to serve this project: _____ 	<input type="checkbox"/> Yes <input type="checkbox"/> No <input type="checkbox"/> Yes <input type="checkbox"/> No
<p>iv. Will a new wastewater (sewage) treatment district be formed to serve the project site? If Yes:</p> <ul style="list-style-type: none"> • Applicant/sponsor for new district: _____ • Date application submitted or anticipated: _____ • What is the receiving water for the wastewater discharge? _____ <p>v. If public facilities will not be used, describe plans to provide wastewater treatment for the project, including specifying proposed receiving water (name and classification if surface discharge, or describe subsurface disposal plans): _____</p> <p>vi. Describe any plans or designs to capture, recycle or reuse liquid waste: _____</p>	<input type="checkbox"/> Yes <input type="checkbox"/> No
<p>e. Will the proposed action disturb more than one acre and create stormwater runoff, either from new point sources (i.e. ditches, pipes, swales, curbs, gutters or other concentrated flows of stormwater) or non-point source (i.e. sheet flow) during construction or post construction? If Yes:</p> <p>i. How much impervious surface will the project create in relation to total size of project parcel? _____ Square feet or _____ acres (impervious surface) _____ Square feet or _____ acres (parcel size)</p> <p>ii. Describe types of new point sources. _____</p> <p>iii. Where will the stormwater runoff be directed (i.e. on-site stormwater management facility/structures, adjacent properties, groundwater, on-site surface water or off-site surface waters)? _____</p> <ul style="list-style-type: none"> • If to surface waters, identify receiving water bodies or wetlands: _____ • Will stormwater runoff flow to adjacent properties? _____ 	<input type="checkbox"/> Yes <input checked="" type="checkbox"/> No <input type="checkbox"/> Yes <input type="checkbox"/> No
<p>iv. Does proposed plan minimize impervious surfaces, use pervious materials or collect and re-use stormwater?</p> <p>f. Does the proposed action include, or will it use on-site, one or more sources of air emissions, including fuel combustion, waste incineration, or other processes or operations? If Yes, identify:</p> <p>i. Mobile sources during project operations (e.g., heavy equipment, fleet or delivery vehicles) _____</p> <p>ii. Stationary sources during construction (e.g., power generation, structural heating, batch plant, crushers) _____</p> <p>iii. Stationary sources during operations (e.g., process emissions, large boilers, electric generation) _____</p>	<input type="checkbox"/> Yes <input checked="" type="checkbox"/> No <input type="checkbox"/> Yes <input type="checkbox"/> No
<p>g. Will any air emission sources named in D.2.f (above), require a NY State Air Registration, Air Facility Permit, or Federal Clean Air Act Title IV or Title V Permit? If Yes:</p> <p>i. Is the project site located in an Air quality non-attainment area? (Area routinely or periodically fails to meet ambient air quality standards for all or some parts of the year) _____</p> <p>ii. In addition to emissions as calculated in the application, the project will generate:</p> <ul style="list-style-type: none"> • _____ Tons/year (short tons) of Carbon Dioxide (CO₂) • _____ Tons/year (short tons) of Nitrous Oxide (N₂O) • _____ Tons/year (short tons) of Perfluorocarbons (PFCs) • _____ Tons/year (short tons) of Sulfur Hexafluoride (SF₆) • _____ Tons/year (short tons) of Carbon Dioxide equivalent of Hydrofluorocarbons (HFCs) • _____ Tons/year (short tons) of Hazardous Air Pollutants (HAPs) 	<input type="checkbox"/> Yes <input checked="" type="checkbox"/> No <input type="checkbox"/> Yes <input type="checkbox"/> No

Palmertown Range Addition to Moreau Lake State Park
 Management Plan – Master Plan Addendum
 Part 3 – Appendices – Appendix A Full Environmental Assessment Form

h. Will the proposed action generate or emit methane (including, but not limited to, sewage treatment plants, landfills, composting facilities)?	<input type="checkbox"/> Yes <input checked="" type="checkbox"/> No
If Yes:	
<i>i.</i> Estimate methane generation in tons/year (metric): _____	
<i>ii.</i> Describe any methane capture, control or elimination measures included in project design (e.g., combustion to generate heat or electricity, flaring): _____	
<hr/>	
i. Will the proposed action result in the release of air pollutants from open-air operations or processes, such as quarry or landfill operations?	<input type="checkbox"/> Yes <input checked="" type="checkbox"/> No
If Yes: Describe operations and nature of emissions (e.g., diesel exhaust, rock particulates/dust): _____	
<hr/>	
j. Will the proposed action result in a substantial increase in traffic above present levels or generate substantial new demand for transportation facilities or services?	<input type="checkbox"/> Yes <input checked="" type="checkbox"/> No
If Yes:	
<i>i.</i> When is the peak traffic expected (Check all that apply): <input type="checkbox"/> Morning <input type="checkbox"/> Evening <input type="checkbox"/> Weekend <input type="checkbox"/> Randomly between hours of _____ to _____.	
<i>ii.</i> For commercial activities only, projected number of semi-trailer truck trips/day: _____	
<i>iii.</i> Parking spaces: Existing _____ Proposed _____ Net increase/decrease _____	
<i>iv.</i> Does the proposed action include any shared use parking? <input type="checkbox"/> Yes <input type="checkbox"/> No	
<i>v.</i> If the proposed action includes any modification of existing roads, creation of new roads or change in existing access, describe: _____	
<hr/>	
<i>vi.</i> Are public/private transportation service(s) or facilities available within ½ mile of the proposed site? <input type="checkbox"/> Yes <input type="checkbox"/> No	
<i>vii.</i> Will the proposed action include access to public transportation or accommodations for use of hybrid, electric or other alternative fueled vehicles? <input type="checkbox"/> Yes <input type="checkbox"/> No	
<i>viii.</i> Will the proposed action include plans for pedestrian or bicycle accommodations for connections to existing pedestrian or bicycle routes? <input type="checkbox"/> Yes <input type="checkbox"/> No	
<hr/>	
k. Will the proposed action (for commercial or industrial projects only) generate new or additional demand for energy?	<input type="checkbox"/> Yes <input checked="" type="checkbox"/> No
If Yes:	
<i>i.</i> Estimate annual electricity demand during operation of the proposed action: _____	
<hr/>	
<i>ii.</i> Anticipated sources/suppliers of electricity for the project (e.g., on-site combustion, on-site renewable, via grid/local utility, or other): _____	
<hr/>	
<i>iii.</i> Will the proposed action require a new, or an upgrade to, an existing substation? <input type="checkbox"/> Yes <input type="checkbox"/> No	
<hr/>	
l. Hours of operation. Answer all items which apply.	
<i>i.</i> During Construction:	
<ul style="list-style-type: none"> • Monday - Friday: _____ dawn-dusk • Saturday: _____ • Sunday: _____ • Holidays: _____ 	
<i>ii.</i> During Operations:	
<ul style="list-style-type: none"> • Monday - Friday: _____ dawn to dusk • Saturday: _____ dawn to dusk • Sunday: _____ dawn to dusk • Holidays: _____ dawn to dusk 	

Palmertown Range Addition to Moreau Lake State Park
 Management Plan – Master Plan Addendum
 Part 3 – Appendices – Appendix A Full Environmental Assessment Form

<p>m. Will the proposed action produce noise that will exceed existing ambient noise levels during construction, operation, or both? <input type="checkbox"/> Yes <input checked="" type="checkbox"/> No</p> <p>If yes:</p> <p>i. Provide details including sources, time of day and duration:</p> <p>_____</p>	
<p>ii. Will proposed action remove existing natural barriers that could act as a noise barrier or screen? <input type="checkbox"/> Yes <input type="checkbox"/> No</p> <p>Describe: _____</p>	
<p>n. Will the proposed action have outdoor lighting? <input type="checkbox"/> Yes <input checked="" type="checkbox"/> No</p> <p>If yes:</p> <p>i. Describe source(s), location(s), height of fixture(s), direction/aim, and proximity to nearest occupied structures:</p> <p>_____</p>	
<p>ii. Will proposed action remove existing natural barriers that could act as a light barrier or screen? <input type="checkbox"/> Yes <input type="checkbox"/> No</p> <p>Describe: _____</p>	
<p>o. Does the proposed action have the potential to produce odors for more than one hour per day? <input type="checkbox"/> Yes <input checked="" type="checkbox"/> No</p> <p>If Yes, describe possible sources, potential frequency and duration of odor emissions, and proximity to nearest occupied structures:</p> <p>_____</p>	
<p>p. Will the proposed action include any bulk storage of petroleum (combined capacity of over 1,100 gallons) or chemical products 185 gallons in above ground storage or any amount in underground storage? <input type="checkbox"/> Yes <input checked="" type="checkbox"/> No</p> <p>If Yes:</p> <p>i. Product(s) to be stored _____</p> <p>ii. Volume(s) _____ per unit time _____ (e.g., month, year)</p> <p>iii. Generally describe proposed storage facilities: _____</p>	
<p>q. Will the proposed action (commercial, industrial and recreational projects only) use pesticides (i.e., herbicides, insecticides) during construction or operation? <input type="checkbox"/> Yes <input checked="" type="checkbox"/> No</p> <p>If Yes:</p> <p>i. Describe proposed treatment(s):</p> <p>_____</p> <p>_____</p>	
<p>ii. Will the proposed action use Integrated Pest Management Practices? <input type="checkbox"/> Yes <input type="checkbox"/> No</p>	
<p>r. Will the proposed action (commercial or industrial projects only) involve or require the management or disposal of solid waste (excluding hazardous materials)? <input type="checkbox"/> Yes <input checked="" type="checkbox"/> No</p> <p>If Yes:</p> <p>i. Describe any solid waste(s) to be generated during construction or operation of the facility:</p> <ul style="list-style-type: none"> • Construction: _____ tons per _____ (unit of time) • Operation : _____ tons per _____ (unit of time) <p>ii. Describe any proposals for on-site minimization, recycling or reuse of materials to avoid disposal as solid waste:</p> <ul style="list-style-type: none"> • Construction: _____ • Operation: _____ <p>iii. Proposed disposal methods/facilities for solid waste generated on-site:</p> <ul style="list-style-type: none"> • Construction: _____ • Operation: _____ 	

Palmertown Range Addition to Moreau Lake State Park
 Management Plan – Master Plan Addendum
 Part 3 – Appendices – Appendix A Full Environmental Assessment Form

s. Does the proposed action include construction or modification of a solid waste management facility? Yes No
 If Yes:
 i. Type of management or handling of waste proposed for the site (e.g., recycling or transfer station, composting, landfill, or other disposal activities): _____
 ii. Anticipated rate of disposal/processing:
 • _____ Tons/month, if transfer or other non-combustion/thermal treatment, or
 • _____ Tons/hour, if combustion or thermal treatment
 iii. If landfill, anticipated site life: _____ years

t. Will proposed action at the site involve the commercial generation, treatment, storage, or disposal of hazardous waste? Yes No
 If Yes:
 i. Name(s) of all hazardous wastes or constituents to be generated, handled or managed at facility: _____

 ii. Generally describe processes or activities involving hazardous wastes or constituents: _____

 iii. Specify amount to be handled or generated _____ tons/month
 iv. Describe any proposals for on-site minimization, recycling or reuse of hazardous constituents: _____

 v. Will any hazardous wastes be disposed at an existing offsite hazardous waste facility? Yes No
 If Yes: provide name and location of facility: _____

 If No: describe proposed management of any hazardous wastes which will not be sent to a hazardous waste facility:

E. Site and Setting of Proposed Action

E.1. Land uses on and surrounding the project site

a. Existing land uses.
 i. Check all uses that occur on, adjoining and near the project site.
 Urban Industrial Commercial Residential (suburban) Rural (non-farm)
 Forest Agriculture Aquatic Other (specify): Parkland
 ii. If mix of uses, generally describe:

b. Land uses and covertypes on the project site.

Land use or Covertype	Current Acreage	Acreage After Project Completion	Change (Acres +/-)
• Roads, buildings, and other paved or impervious surfaces			
• Forested	1031	1030.7	- 0.3
• Meadows, grasslands or brushlands (non-agricultural, including abandoned agricultural)			
• Agricultural (includes active orchards, field, greenhouse etc.)			
• Surface water features (lakes, ponds, streams, rivers, etc.)	38	38	0
• Wetlands (freshwater or tidal)			
• Non-vegetated (bare rock, earth or fill)			
• Other Describe: <u>pervious parking lots (2)</u>	0	0.3	+0.3

Palmertown Range Addition to Moreau Lake State Park
 Management Plan – Master Plan Addendum
 Part 3 – Appendices – Appendix A Full Environmental Assessment Form

<p>c. Is the project site presently used by members of the community for public recreation? <input checked="" type="checkbox"/> Yes <input type="checkbox"/> No</p> <p><i>i.</i> If Yes: explain: <u>Part of this area is currently used as part of Moreau Lake State Park, part of the area has been closed to the public</u></p>	
<p>d. Are there any facilities serving children, the elderly, people with disabilities (e.g., schools, hospitals, licensed day care centers, or group homes) within 1500 feet of the project site? <input type="checkbox"/> Yes <input checked="" type="checkbox"/> No</p> <p>If Yes,</p> <p><i>i.</i> Identify Facilities:</p> <p>_____</p> <p>_____</p>	
<p>e. Does the project site contain an existing dam? <input checked="" type="checkbox"/> Yes <input type="checkbox"/> No</p> <p>If Yes:</p> <p><i>i.</i> Dimensions of the dam and impoundment:</p> <ul style="list-style-type: none"> • Dam height: _____ <u>14</u> feet • Dam length: _____ <u>295</u> feet • Surface area: _____ <u>38</u> acres • Volume impounded: _____ <u>152 acre-feet</u> gallons OR acre-feet <p><i>ii.</i> Dam's existing hazard classification: <u>A (low)</u></p> <p><i>iii.</i> Provide date and summarize results of last inspection:</p> <p><u>n/a</u></p>	
<p>f. Has the project site ever been used as a municipal, commercial or industrial solid waste management facility, or does the project site adjoin property which is now, or was at one time, used as a solid waste management facility? <input type="checkbox"/> Yes <input checked="" type="checkbox"/> No</p> <p>If Yes:</p> <p><i>i.</i> Has the facility been formally closed? <input type="checkbox"/> Yes <input type="checkbox"/> No</p> <ul style="list-style-type: none"> • If yes, cite sources/documentation: _____ <p><i>ii.</i> Describe the location of the project site relative to the boundaries of the solid waste management facility:</p> <p>_____</p> <p>_____</p> <p><i>iii.</i> Describe any development constraints due to the prior solid waste activities: _____</p> <p>_____</p>	
<p>g. Have hazardous wastes been generated, treated and/or disposed of at the site, or does the project site adjoin property which is now or was at one time used to commercially treat, store and/or dispose of hazardous waste? <input type="checkbox"/> Yes <input checked="" type="checkbox"/> No</p> <p>If Yes:</p> <p><i>i.</i> Describe waste(s) handled and waste management activities, including approximate time when activities occurred:</p> <p>_____</p> <p>_____</p>	
<p>h. Potential contamination history. Has there been a reported spill at the proposed project site, or have any remedial actions been conducted at or adjacent to the proposed site? <input type="checkbox"/> Yes <input checked="" type="checkbox"/> No</p> <p>If Yes:</p> <p><i>i.</i> Is any portion of the site listed on the NYSDEC Spills Incidents database or Environmental Site Remediation database? Check all that apply: <input type="checkbox"/> Yes <input type="checkbox"/> No</p> <p><input type="checkbox"/> Yes – Spills Incidents database Provide DEC ID number(s): _____</p> <p><input type="checkbox"/> Yes – Environmental Site Remediation database Provide DEC ID number(s): _____</p> <p><input type="checkbox"/> Neither database</p> <p><i>ii.</i> If site has been subject of RCRA corrective activities, describe control measures: _____</p> <p>_____</p> <p><i>iii.</i> Is the project within 2000 feet of any site in the NYSDEC Environmental Site Remediation database? <input type="checkbox"/> Yes <input checked="" type="checkbox"/> No</p> <p>If yes, provide DEC ID number(s): _____</p> <p><i>iv.</i> If yes to (i), (ii) or (iii) above, describe current status of site(s): _____</p> <p>_____</p>	

Palmertown Range Addition to Moreau Lake State Park
 Management Plan – Master Plan Addendum
 Part 3 – Appendices – Appendix A Full Environmental Assessment Form

v. Is the project site subject to an institutional control limiting property uses? <input type="checkbox"/> Yes <input type="checkbox"/> No										
<ul style="list-style-type: none"> • If yes, DEC site ID number: _____ • Describe the type of institutional control (e.g., deed restriction or easement): _____ • Describe any use limitations: _____ • Describe any engineering controls: _____ • Will the project affect the institutional or engineering controls in place? <input type="checkbox"/> Yes <input type="checkbox"/> No • Explain: _____ 										
E.2. Natural Resources On or Near Project Site										
a. What is the average depth to bedrock on the project site?	_____ varies greatly 0-6' feet									
b. Are there bedrock outcroppings on the project site? <input checked="" type="checkbox"/> Yes <input type="checkbox"/> No	If Yes, what proportion of the site is comprised of bedrock outcroppings? _____ unknown %									
c. Predominant soil type(s) present on project site:	<table border="0"> <tr> <td>Brice-Woodstock complex steep sto</td> <td>_____</td> <td>23.4 %</td> </tr> <tr> <td>Brice-Woodstock strongly sloping</td> <td>_____</td> <td>14.5 %</td> </tr> <tr> <td>Chatfield-Hollis complex</td> <td>_____</td> <td>13.7 %</td> </tr> </table>	Brice-Woodstock complex steep sto	_____	23.4 %	Brice-Woodstock strongly sloping	_____	14.5 %	Chatfield-Hollis complex	_____	13.7 %
Brice-Woodstock complex steep sto	_____	23.4 %								
Brice-Woodstock strongly sloping	_____	14.5 %								
Chatfield-Hollis complex	_____	13.7 %								
d. What is the average depth to the water table on the project site? Average:	_____ 80 feet									
e. Drainage status of project site soils:	<input type="checkbox"/> Well Drained: _____ % of site <input checked="" type="checkbox"/> Moderately Well Drained: _____ 100 % of site <input type="checkbox"/> Poorly Drained _____ % of site									
f. Approximate proportion of proposed action site with slopes:	<input checked="" type="checkbox"/> 0-10%: _____ 8.8 % of site <input checked="" type="checkbox"/> 10-15%: _____ 46.7 % of site <input checked="" type="checkbox"/> 15% or greater: _____ 44.5 % of site									
g. Are there any unique geologic features on the project site? <input type="checkbox"/> Yes <input checked="" type="checkbox"/> No	If Yes, describe: _____									
h. Surface water features.										
i. Does any portion of the project site contain wetlands or other waterbodies (including streams, rivers, ponds or lakes)? <input checked="" type="checkbox"/> Yes <input type="checkbox"/> No										
ii. Do any wetlands or other waterbodies adjoin the project site? <input checked="" type="checkbox"/> Yes <input type="checkbox"/> No										
If Yes to either <i>i</i> or <i>ii</i> , continue. If No, skip to E.2.i.										
iii. Are any of the wetlands or waterbodies within or adjoining the project site regulated by any federal, state or local agency? <input checked="" type="checkbox"/> Yes <input type="checkbox"/> No										
iv. For each identified regulated wetland and waterbody on the project site, provide the following information:										
<ul style="list-style-type: none"> • Streams: Name <u>941-400, 941-401.1, 941-399.3, 941-7.2, 941-373...</u> Classification <u>C(T), C(TS), AA</u> • Lakes or Ponds: Name <u>Lake Bonita</u> Classification <u>AA</u> • Wetlands: Name <u>Federal Waters, Federal Waters, Federal Waters,...</u> Approximate Size _____ • Wetland No. (if regulated by DEC) _____ 										
v. Are any of the above water bodies listed in the most recent compilation of NYS water quality-impaired waterbodies? <input type="checkbox"/> Yes <input checked="" type="checkbox"/> No	If yes, name of impaired water body/bodies and basis for listing as impaired: _____									
i. Is the project site in a designated Floodway? <input type="checkbox"/> Yes <input checked="" type="checkbox"/> No										
j. Is the project site in the 100 year Floodplain? <input type="checkbox"/> Yes <input checked="" type="checkbox"/> No										
k. Is the project site in the 500 year Floodplain? <input type="checkbox"/> Yes <input checked="" type="checkbox"/> No										
l. Is the project site located over, or immediately adjoining, a primary, principal or sole source aquifer? <input checked="" type="checkbox"/> Yes <input type="checkbox"/> No	If Yes: i. Name of aquifer: <u>Principal Aquifer</u>									

Palmertown Range Addition to Moreau Lake State Park
 Management Plan – Master Plan Addendum
 Part 3 – Appendices – Appendix A Full Environmental Assessment Form

m. Identify the predominant wildlife species that occupy or use the project site: <table style="width: 100%; border: none;"> <tr> <td style="border: none;">white tailed deer _____</td> <td style="border: none;">grey and red squirrel _____</td> <td style="border: none;">raccoon _____</td> </tr> <tr> <td style="border: none;">red fox _____</td> <td style="border: none;">black bear _____</td> <td style="border: none;">coyote _____</td> </tr> </table>	white tailed deer _____	grey and red squirrel _____	raccoon _____	red fox _____	black bear _____	coyote _____
white tailed deer _____	grey and red squirrel _____	raccoon _____				
red fox _____	black bear _____	coyote _____				
n. Does the project site contain a designated significant natural community? <input checked="" type="checkbox"/> Yes <input type="checkbox"/> No If Yes: <i>i.</i> Describe the habitat/community (composition, function, and basis for designation): _____ Calcareous Talus Slope Woodland, Hemlock-Northern Hardwood Forest <i>ii.</i> Source(s) of description or evaluation: _____ <i>iii.</i> Extent of community/habitat: <ul style="list-style-type: none"> • Currently: _____ 35.0, 2740.0, 5232.0 acres • Following completion of project as proposed: _____ acres • Gain or loss (indicate + or -): _____ acres 						
o. Does project site contain any species of plant or animal that is listed by the federal government or NYS as endangered or threatened, or does it contain any areas identified as habitat for an endangered or threatened species? <input type="checkbox"/> Yes <input checked="" type="checkbox"/> No						
p. Does the project site contain any species of plant or animal that is listed by NYS as rare, or as a species of special concern? <input type="checkbox"/> Yes <input checked="" type="checkbox"/> No						
q. Is the project site or adjoining area currently used for hunting, trapping, fishing or shell fishing? <input checked="" type="checkbox"/> Yes <input type="checkbox"/> No If yes, give a brief description of how the proposed action may affect that use: _____ the proposed action will open this site to the public for hunting and fishing with certain restrictions _____						
E.3. Designated Public Resources On or Near Project Site						
a. Is the project site, or any portion of it, located in a designated agricultural district certified pursuant to Agriculture and Markets Law, Article 25-AA, Section 303 and 304? <input type="checkbox"/> Yes <input checked="" type="checkbox"/> No If Yes, provide county plus district name/number: _____						
b. Are agricultural lands consisting of highly productive soils present? <input type="checkbox"/> Yes <input checked="" type="checkbox"/> No <i>i.</i> If Yes: acreage(s) on project site? _____ <i>ii.</i> Source(s) of soil rating(s): _____						
c. Does the project site contain all or part of, or is it substantially contiguous to, a registered National Natural Landmark? <input type="checkbox"/> Yes <input checked="" type="checkbox"/> No If Yes: <i>i.</i> Nature of the natural landmark: <input type="checkbox"/> Biological Community <input type="checkbox"/> Geological Feature <i>ii.</i> Provide brief description of landmark, including values behind designation and approximate size/extent: _____ _____ _____						
d. Is the project site located in or does it adjoin a state listed Critical Environmental Area? <input type="checkbox"/> Yes <input checked="" type="checkbox"/> No If Yes: <i>i.</i> CEA name: _____ <i>ii.</i> Basis for designation: _____ <i>iii.</i> Designating agency and date: _____						

Palmertown Range Addition to Moreau Lake State Park
 Management Plan – Master Plan Addendum
 Part 3 – Appendices – Appendix A Full Environmental Assessment Form

e. Does the project site contain, or is it substantially contiguous to, a building, archaeological site, or district which is listed on, or has been nominated by the NYS Board of Historic Preservation for inclusion on, the State or National Register of Historic Places?	<input checked="" type="checkbox"/> Yes <input type="checkbox"/> No
If Yes:	
i. Nature of historic/archaeological resource:	<input type="checkbox"/> Archaeological Site <input checked="" type="checkbox"/> Historic Building or District
ii. Name:	Grant's Cottage
iii. Brief description of attributes on which listing is based: importance in US History	
f. Is the project site, or any portion of it, located in or adjacent to an area designated as sensitive for archaeological sites on the NY State Historic Preservation Office (SHPO) archaeological site inventory?	<input type="checkbox"/> Yes <input checked="" type="checkbox"/> No
g. Have additional archaeological or historic site(s) or resources been identified on the project site?	<input type="checkbox"/> Yes <input checked="" type="checkbox"/> No
If Yes:	
i. Describe possible resource(s):	
ii. Basis for identification:	
h. Is the project site within five miles of any officially designated and publicly accessible federal, state, or local scenic or aesthetic resource?	<input type="checkbox"/> Yes <input checked="" type="checkbox"/> No
If Yes:	
i. Identify resource:	
ii. Nature of, or basis for, designation (e.g., established highway overlook, state or local park, state historic trail or scenic byway, etc.):	
iii. Distance between project and resource:	_____ miles.
i. Is the project site located within a designated river corridor under the Wild, Scenic and Recreational Rivers Program 6 NYCRR 666?	<input type="checkbox"/> Yes <input checked="" type="checkbox"/> No
If Yes:	
i. Identify the name of the river and its designation:	
ii. Is the activity consistent with development restrictions contained in 6NYCRR Part 666?	<input type="checkbox"/> Yes <input type="checkbox"/> No

F. Additional Information

Attach any additional information which may be needed to clarify your project.

If you have identified any adverse impacts which could be associated with your proposal, please describe those impacts plus any measures which you propose to avoid or minimize them.

G. Verification

I certify that the information provided is true to the best of my knowledge.

Applicant/Sponsor Name Karen B. Terbush Date Jan. 5, 2016

Signature Karen B. Terbush Title Environmental Analyst 2

PRINT FORM

Palmertown Range Addition to Moreau Lake State Park
 Management Plan – Master Plan Addendum
 Part 3 – Appendices – Appendix A Full Environmental Assessment Form

EA Mapper Summary Report

Monday, September 28, 2015 3:21 PM

Disclaimer: The EA Mapper is a screening tool intended to assist project sponsors and reviewing agencies in preparing an environmental assessment form (EAF). Not all questions asked in the EAF are answered by the EA Mapper. Additional information on any EAF question can be obtained by consulting the EAF Workbooks. Although the EA Mapper provides the most up-to-date digital data available to DEC, you may also need to contact local or other data sources in order to obtain data not provided by the Mapper. Digital data is not a substitute for agency determinations.

Sources: Esri, HERE, DeLorme, USGS, Intermap, increment P Corp., NRCAN, Esri Japan, METI, Esri China (Hong Kong), Esri (Thailand), MapmyIndia, © OpenStreetMap contributors, and the GIS User Community

B.i.i [Coastal or Waterfront Area]	No
B.i.ii [Local Waterfront Revitalization Area]	No
C.2.b. [Special Planning District]	Yes - Digital mapping data are not available for all Special Planning Districts. Refer to EAF Workbook.
C.2.b. [Special Planning District - Name]	NYS Heritage Areas: Mohawk Valley Heritage Corridor
E.1.h [DEC Spills or Remediation Site - Potential Contamination History]	Digital mapping data are not available or are incomplete. Refer to EAF Workbook.
E.1.h.i [DEC Spills or Remediation Site - Listed]	Digital mapping data are not available or are incomplete. Refer to EAF Workbook.
E.1.h.i [DEC Spills or Remediation Site - Environmental Site Remediation Database]	Digital mapping data are not available or are incomplete. Refer to EAF Workbook.
E.1.h.iii [Within 2,000' of DEC Remediation Site]	No
E.2.g [Unique Geologic Features]	No
E.2.h.i [Surface Water Features]	Yes
E.2.h.ii [Surface Water Features]	Yes
E.2.h.iii [Surface Water Features]	Yes - Digital mapping information on local and federal wetlands and waterbodies is known to be incomplete. Refer to EAF Workbook.
E.2.h.iv [Surface Water Features - Stream Name]	941-400, 941-401.1, 941-399.3, 941-7.2, 941-373, 941-402, 941-372
E.2.h.iv [Surface Water Features - Stream Classification]	C(T), C(TS), AA
E.2.h.iv [Surface Water Features - Wetlands Name]	Federal Waters
E.2.h.v [Impaired Water Bodies]	No
E.2.i. [Floodway]	Digital mapping data are not available or are incomplete. Refer to EAF Workbook.

Palmertown Range Addition to Moreau Lake State Park
 Management Plan – Master Plan Addendum
 Part 3 – Appendices – Appendix A Full Environmental Assessment Form

E 2.j. [100 Year Floodplain]	Digital mapping data are not available or are incomplete. Refer to EAF Workbook.
E 2.k. [500 Year Floodplain]	Digital mapping data are not available or are incomplete. Refer to EAF Workbook.
E.2.l. [Aquifers]	Yes
E 2.l. [Aquifer Names]	Principal Aquifer
E 2.n. [Natural Communities]	Yes
E 2.n.i [Natural Communities - Name]	Calcareous Talus Slope Woodland, Hemlock-Northern Hardwood Forest
E 2.n.i [Natural Communities - Acres]	35.0, 2740.0, 5232.0
E 2.o. [Endangered or Threatened Species]	No
E 2.p. [Rare Plants or Animals]	No
E 3.a. [Agricultural District]	No
E 3.c. [National Natural Landmark]	No
E.3.d [Critical Environmental Area]	No
E.3.e. [National Register of Historic Places]	Digital mapping data are not available or are incomplete. Refer to EAF Workbook.
E.3.f. [Archeological Sites]	No
E.3.i. [Designated River Corridor]	No

Full EAF Part 1F: ADDITIONAL INFORMATION

Adoption and Implementation of the Management Plan for the Palmertown Range Addition to Moreau Lake State Park - Towns of Moreau, Wilton and Corinth

The Palmertown Range Management Plan has been developed as an addendum to the Moreau Lake State Park Master Plan (OPRHP 2006) to provide direction for the operation, management, recreational development and natural resource protection strategies on lands acquired by NYS Parks since the adoption of the Master Plan including the McGregor, MacKenzie, and Clothier acquisitions totaling 1031 acres. The Palmertown Range Addition to Moreau Lake State Park is considered an extension of the Palmertown Mountain Management Area as described in the Moreau Lake State Park Master Plan (OPRHP 2006).

Very little development is proposed for this new parkland (See Management Plan Map for details). Access to these parcels will be provided through a small parking area (60'X100') and gate off of Wilton Mountain Road and through eventual development of another small (60'X100') parking area and gate at the end of the existing Mt. McGregor Road which traverses through the former prison area, still held by NY State Empire State Development for adaptive reuse of the prison facilities. The total area to be physically disturbed for both of these parking areas combined is approximately 0.3 acres. The parking areas will not be paved. If demand indicates a need, portable toilets may be placed at the parking areas.

The major recreational development proposed for these new lands is a system of new trails, linking to the existing trail system in Moreau Lake State Park. The proposed trails are shown in the table below and on the Management Plan Map.

Trail Name	Length (miles)
Grant Cottage Access	1.06
Main Connection Loop	1.75
Waterfall Trail	0.92
New Trail	0.73
Lake Ann Access	0.02
Lake Bonita Loop	0.94
Palmertown Range Trail	0.95

The trails are proposed to be 2 feet wide and will be single-track, non-motorized, multi-use trails. The final routing of trails will be done onsite following the guidance of the regional biologist. The total area to be physically disturbed for trails is approximately 1.7 acres.

The management plan also calls for changes in Park designations to preserve and protect the natural resources in the new parklands.

Bird Conservation Area (BCA) – The boundaries of the BCA in Moreau Lake State Park will be adjusted to include the entire park, the Grant Cottage State Historic Site and the entire additional lands acquired (see Figure 4). The original boundaries of the BCA excluded the park's day use and camping areas.

Palmertown Range Addition to Moreau Lake State Park
Management Plan – Master Plan Addendum
Part 3 – Appendices – Appendix A Full Environmental Assessment Form

However, recent new designations by NYSOPRHP have considered that usually the entire park provides habitat for birds. Although the primary use in areas of Moreau Lake State Park not previously designated as BCA is recreation, these areas still meet the criteria of the BCA law and have some bird conservation value. The new lands acquired are part of the hemlock-northern hardwood forest complex and contribute to the overall diversity of bird species in the park. The Management Guidance Summary for the Moreau Lake SP BCA will be updated to reflect these changes.

Natural Heritage Area (NHA) – The boundaries of the NHA in Moreau Lake State Park will be adjusted to include all of the new acquisitions, the Grant Cottage State Historic Site and include much more of the park than the original designation. Moreau Lake State Park was one of the first parks to have Natural Heritage Areas designated. At that time, only the boundaries of the significant natural communities (hemlock-northern hardwood and calcareous talus slope woodland) as defined within the Natural Heritage Report for the park were designated. More recently, the Agency has determined not to follow that method as it is impossible to apply on the ground. NHA's have since been mapped either following roads or other obvious boundaries. Thus, the boundaries of the NHA in Moreau Lake State Park are being adjusted as shown on Figure 5) to include the entire park except for the Lake Recreation Area. The new acquisition has mostly been mapped by the NY Natural Heritage Program and is an extension of the significant hemlock-northern hardwood natural community. Surveys of the entire area are not complete and will be updated in the future, however, initial indications are that the significant community continues onto these lands and thus will be included within the NHA.

Park Preservation Areas (PPA) – The boundaries of the PPA for Moreau Lake State Park will be adjusted to include the entire new lands with the exception of the Grant Cottage State Historic Site (see Figure 6). The Moreau Lake Master Plan designated the area identified as the Palmertown Mountain Management Area as a Park Preservation Area as it was most consistent with the intent of a PPA. The new acquisitions are mostly undeveloped areas containing more of the significant hemlock-northern hardwood ecological community found in the adjacent Palmertown Mountain Management Area. The minimal planned development on these new parcels meets the criteria for a PPA under Article 20 of the Parks, Recreation and Historic Preservation Law.

Palmertown Range Addition to Moreau Lake State Park
 Management Plan – Master Plan Addendum
 Part 3 – Appendices – Appendix A Full Environmental Assessment Form

Full Environmental Assessment Form
Part 2 - Identification of Potential Project Impacts

Agency Use Only [If applicable]
Project: <u>Palmertown Range Management Plan</u>
Date: _____

Part 2 is to be completed by the lead agency. Part 2 is designed to help the lead agency inventory all potential resources that could be affected by a proposed project or action. We recognize that the lead agency's reviewer(s) will not necessarily be environmental professionals. So, the questions are designed to walk a reviewer through the assessment process by providing a series of questions that can be answered using the information found in Part 1. To further assist the lead agency in completing Part 2, the form identifies the most relevant questions in Part 1 that will provide the information needed to answer the Part 2 question. When Part 2 is completed, the lead agency will have identified the relevant environmental areas that may be impacted by the proposed activity.

If the lead agency is a state agency **and** the action is in any Coastal Area, complete the Coastal Assessment Form before proceeding with this assessment.

Tips for completing Part 2:

- Review all of the information provided in Part 1.
- Review any application, maps, supporting materials and the Full EAF Workbook.
- Answer each of the 18 questions in Part 2.
- If you answer "Yes" to a numbered question, please complete all the questions that follow in that section.
- If you answer "No" to a numbered question, move on to the next numbered question.
- Check appropriate column to indicate the anticipated size of the impact.
- Proposed projects that would exceed a numeric threshold contained in a question should result in the reviewing agency checking the box "Moderate to large impact may occur."
- The reviewer is not expected to be an expert in environmental analysis.
- If you are not sure or undecided about the size of an impact, it may help to review the sub-questions for the general question and consult the workbook.
- When answering a question consider all components of the proposed activity, that is, the "whole action".
- Consider the possibility for long-term and cumulative impacts as well as direct impacts.
- Answer the question in a reasonable manner considering the scale and context of the project.

1. Impact on Land	<input type="checkbox"/> NO	<input checked="" type="checkbox"/> YES	
Proposed action may involve construction on, or physical alteration of, the land surface of the proposed site. (See Part 1, D.1)			
<i>If "Yes", answer questions a - j. If "No", move on to Section 2.</i>			
	Relevant Part I Question(s)	No, or small impact may occur	Moderate to large impact may occur
a. The proposed action may involve construction on land where depth to water table is less than 3 feet.	E2d	<input checked="" type="checkbox"/>	<input type="checkbox"/>
b. The proposed action may involve construction on slopes of 15% or greater.	E2f	<input checked="" type="checkbox"/>	<input type="checkbox"/>
c. The proposed action may involve construction on land where bedrock is exposed, or generally within 5 feet of existing ground surface.	E2a	<input checked="" type="checkbox"/>	<input type="checkbox"/>
d. The proposed action may involve the excavation and removal of more than 1,000 tons of natural material.	D2a	<input checked="" type="checkbox"/>	<input type="checkbox"/>
e. The proposed action may involve construction that continues for more than one year or in multiple phases.	D1e	<input checked="" type="checkbox"/>	<input type="checkbox"/>
f. The proposed action may result in increased erosion, whether from physical disturbance or vegetation removal (including from treatment by herbicides).	D2e, D2q	<input checked="" type="checkbox"/>	<input type="checkbox"/>
g. The proposed action is, or may be, located within a Coastal Erosion hazard area.	B1i	<input checked="" type="checkbox"/>	<input type="checkbox"/>
h. Other impacts: _____		<input type="checkbox"/>	<input type="checkbox"/>

Palmertown Range Addition to Moreau Lake State Park
 Management Plan – Master Plan Addendum
 Part 3 – Appendices – Appendix A Full Environmental Assessment Form

2. Impact on Geological Features The proposed action may result in the modification or destruction of, or inhibit access to, any unique or unusual land forms on the site (e.g., cliffs, dunes, minerals, fossils, caves). (See Part 1. E.2.g) <input checked="" type="checkbox"/> NO <input type="checkbox"/> YES <i>If "Yes", answer questions a - c. If "No", move on to Section 3.</i>			
	Relevant Part I Question(s)	No, or small impact may occur	Moderate to large impact may occur
a. Identify the specific land form(s) attached: _____	E2g	<input type="checkbox"/>	<input type="checkbox"/>
b. The proposed action may affect or be adjacent to a geological feature listed as a registered National Natural Landmark. Specific feature: _____	E3c	<input type="checkbox"/>	<input type="checkbox"/>
c. Other impacts: _____		<input type="checkbox"/>	<input type="checkbox"/>

3. Impacts on Surface Water The proposed action may affect one or more wetlands or other surface water bodies (e.g., streams, rivers, ponds or lakes). (See Part 1. D.2, E.2.h) <input checked="" type="checkbox"/> NO <input type="checkbox"/> YES <i>If "Yes", answer questions a - l. If "No", move on to Section 4.</i>			
	Relevant Part I Question(s)	No, or small impact may occur	Moderate to large impact may occur
a. The proposed action may create a new water body.	D2b, D1h	<input type="checkbox"/>	<input type="checkbox"/>
b. The proposed action may result in an increase or decrease of over 10% or more than a 10 acre increase or decrease in the surface area of any body of water.	D2b	<input type="checkbox"/>	<input type="checkbox"/>
c. The proposed action may involve dredging more than 100 cubic yards of material from a wetland or water body.	D2a	<input type="checkbox"/>	<input type="checkbox"/>
d. The proposed action may involve construction within or adjoining a freshwater or tidal wetland, or in the bed or banks of any other water body.	E2h	<input type="checkbox"/>	<input type="checkbox"/>
e. The proposed action may create turbidity in a waterbody, either from upland erosion, runoff or by disturbing bottom sediments.	D2a, D2h	<input type="checkbox"/>	<input type="checkbox"/>
f. The proposed action may include construction of one or more intake(s) for withdrawal of water from surface water.	D2c	<input type="checkbox"/>	<input type="checkbox"/>
g. The proposed action may include construction of one or more outfall(s) for discharge of wastewater to surface water(s).	D2d	<input type="checkbox"/>	<input type="checkbox"/>
h. The proposed action may cause soil erosion, or otherwise create a source of stormwater discharge that may lead to siltation or other degradation of receiving water bodies.	D2e	<input type="checkbox"/>	<input type="checkbox"/>
i. The proposed action may affect the water quality of any water bodies within or downstream of the site of the proposed action.	E2h	<input type="checkbox"/>	<input type="checkbox"/>
j. The proposed action may involve the application of pesticides or herbicides in or around any water body.	D2q, E2h	<input type="checkbox"/>	<input type="checkbox"/>
k. The proposed action may require the construction of new, or expansion of existing, wastewater treatment facilities.	D1a, D2d	<input type="checkbox"/>	<input type="checkbox"/>

Palmertown Range Addition to Moreau Lake State Park
 Management Plan – Master Plan Addendum
 Part 3 – Appendices – Appendix A Full Environmental Assessment Form

l. Other impacts: _____ _____		<input type="checkbox"/>	<input type="checkbox"/>
----------------------------------	--	--------------------------	--------------------------

4. Impact on groundwater
 The proposed action may result in new or additional use of ground water, or may have the potential to introduce contaminants to ground water or an aquifer. NO YES
 (See Part 1. D.2.a, D.2.c, D.2.d, D.2.p, D.2.q, D.2.t)
 If "Yes", answer questions a - h. If "No", move on to Section 5.

	Relevant Part I Question(s)	No, or small impact may occur	Moderate to large impact may occur
a. The proposed action may require new water supply wells, or create additional demand on supplies from existing water supply wells.	D2c	<input type="checkbox"/>	<input type="checkbox"/>
b. Water supply demand from the proposed action may exceed safe and sustainable withdrawal capacity rate of the local supply or aquifer. Cite Source: _____	D2c	<input type="checkbox"/>	<input type="checkbox"/>
c. The proposed action may allow or result in residential uses in areas without water and sewer services.	D1a, D2c	<input type="checkbox"/>	<input type="checkbox"/>
d. The proposed action may include or require wastewater discharged to groundwater.	D2d, E2l	<input type="checkbox"/>	<input type="checkbox"/>
e. The proposed action may result in the construction of water supply wells in locations where groundwater is, or is suspected to be, contaminated.	D2c, E1f, E1g, E1h	<input type="checkbox"/>	<input type="checkbox"/>
f. The proposed action may require the bulk storage of petroleum or chemical products over ground water or an aquifer.	D2p, E2l	<input type="checkbox"/>	<input type="checkbox"/>
g. The proposed action may involve the commercial application of pesticides within 100 feet of potable drinking water or irrigation sources.	E2h, D2q, E2l, D2c	<input type="checkbox"/>	<input type="checkbox"/>
h. Other impacts: _____ _____		<input type="checkbox"/>	<input type="checkbox"/>

5. Impact on Flooding
 The proposed action may result in development on lands subject to flooding. NO YES
 (Sec Part 1. E.2)
 If "Yes", answer questions a - g. If "No", move on to Section 6.

	Relevant Part I Question(s)	No, or small impact may occur	Moderate to large impact may occur
a. The proposed action may result in development in a designated floodway.	E2i	<input type="checkbox"/>	<input type="checkbox"/>
b. The proposed action may result in development within a 100 year floodplain.	E2j	<input type="checkbox"/>	<input type="checkbox"/>
c. The proposed action may result in development within a 500 year floodplain.	E2k	<input type="checkbox"/>	<input type="checkbox"/>
d. The proposed action may result in, or require, modification of existing drainage patterns.	D2b, D2e	<input type="checkbox"/>	<input type="checkbox"/>
e. The proposed action may change flood water flows that contribute to flooding.	D2b, E2i, E2j, E2k	<input type="checkbox"/>	<input type="checkbox"/>
f. If there is a dam located on the site of the proposed action, is the dam in need of repair, or upgrade?	E1e	<input type="checkbox"/>	<input type="checkbox"/>

Palmertown Range Addition to Moreau Lake State Park
 Management Plan – Master Plan Addendum
 Part 3 – Appendices – Appendix A Full Environmental Assessment Form

g. Other impacts: _____		<input type="checkbox"/>	<input type="checkbox"/>
-------------------------	--	--------------------------	--------------------------

6. Impacts on Air The proposed action may include a state regulated air emission source. <input checked="" type="checkbox"/> NO <input type="checkbox"/> YES (See Part 1, D.2.f., D.2.h, D.2.g) If "Yes", answer questions a - f. If "No", move on to Section 7.			
	Relevant Part I Question(s)	No, or small impact may occur	Moderate to large impact may occur
a. If the proposed action requires federal or state air emission permits, the action may also emit one or more greenhouse gases at or above the following levels:			
i. More than 1000 tons/year of carbon dioxide (CO ₂)	D2g	<input type="checkbox"/>	<input type="checkbox"/>
ii. More than 3.5 tons/year of nitrous oxide (N ₂ O)	D2g	<input type="checkbox"/>	<input type="checkbox"/>
iii. More than 1000 tons/year of carbon equivalent of perfluorocarbons (PFCs)	D2g	<input type="checkbox"/>	<input type="checkbox"/>
iv. More than .045 tons/year of sulfur hexafluoride (SF ₆)	D2g	<input type="checkbox"/>	<input type="checkbox"/>
v. More than 1000 tons/year of carbon dioxide equivalent of hydrochloroflourocarbons (HFCs) emissions	D2g	<input type="checkbox"/>	<input type="checkbox"/>
vi. 43 tons/year or more of methane	D2h	<input type="checkbox"/>	<input type="checkbox"/>
b. The proposed action may generate 10 tons/year or more of any one designated hazardous air pollutant, or 25 tons/year or more of any combination of such hazardous air pollutants.	D2g	<input type="checkbox"/>	<input type="checkbox"/>
c. The proposed action may require a state air registration, or may produce an emissions rate of total contaminants that may exceed 5 lbs. per hour, or may include a heat source capable of producing more than 10 million BTU's per hour.	D2f, D2g	<input type="checkbox"/>	<input type="checkbox"/>
d. The proposed action may reach 50% of any of the thresholds in "a" through "c", above.	D2g	<input type="checkbox"/>	<input type="checkbox"/>
e. The proposed action may result in the combustion or thermal treatment of more than 1 ton of refuse per hour.	D2s	<input type="checkbox"/>	<input type="checkbox"/>
f. Other impacts: _____		<input type="checkbox"/>	<input type="checkbox"/>

7. Impact on Plants and Animals The proposed action may result in a loss of flora or fauna. (See Part 1, E.2. m.-q.) <input type="checkbox"/> NO <input checked="" type="checkbox"/> YES If "Yes", answer questions a - j. If "No", move on to Section 8.			
	Relevant Part I Question(s)	No, or small impact may occur	Moderate to large impact may occur
a. The proposed action may cause reduction in population or loss of individuals of any threatened or endangered species, as listed by New York State or the Federal government, that use the site, or are found on, over, or near the site.	E2o	<input checked="" type="checkbox"/>	<input type="checkbox"/>
b. The proposed action may result in a reduction or degradation of any habitat used by any rare, threatened or endangered species, as listed by New York State or the federal government.	E2o	<input type="checkbox"/>	<input checked="" type="checkbox"/>
c. The proposed action may cause reduction in population, or loss of individuals, of any species of special concern or conservation need, as listed by New York State or the Federal government, that use the site, or are found on, over, or near the site.	E2p	<input checked="" type="checkbox"/>	<input type="checkbox"/>
d. The proposed action may result in a reduction or degradation of any habitat used by any species of special concern and conservation need, as listed by New York State or the Federal government.	E2p	<input checked="" type="checkbox"/>	<input type="checkbox"/>

Palmertown Range Addition to Moreau Lake State Park
 Management Plan – Master Plan Addendum
 Part 3 – Appendices – Appendix A Full Environmental Assessment Form

e. The proposed action may diminish the capacity of a registered National Natural Landmark to support the biological community it was established to protect.	E3c	<input checked="" type="checkbox"/>	<input type="checkbox"/>
f. The proposed action may result in the removal of, or ground disturbance in, any portion of a designated significant natural community. Source: Hemlock-Northern Hardwood forest	E2n	<input checked="" type="checkbox"/>	<input type="checkbox"/>
g. The proposed action may substantially interfere with nesting/breeding, foraging, or over-wintering habitat for the predominant species that occupy or use the project site.	E2m	<input checked="" type="checkbox"/>	<input type="checkbox"/>
h. The proposed action requires the conversion of more than 10 acres of forest, grassland or any other regionally or locally important habitat. Habitat type & information source: _____	E1b	<input checked="" type="checkbox"/>	<input type="checkbox"/>
i. Proposed action (commercial, industrial or recreational projects, only) involves use of herbicides or pesticides.	D2g	<input checked="" type="checkbox"/>	<input type="checkbox"/>
j. Other impacts: _____		<input checked="" type="checkbox"/>	<input type="checkbox"/>

8. Impact on Agricultural Resources			
The proposed action may impact agricultural resources. (See Part 1, E.3.a. and b.)		<input checked="" type="checkbox"/> NO	<input type="checkbox"/> YES
<i>If "Yes", answer questions a - h. If "No", move on to Section 9.</i>			
	Relevant Part I Question(s)	No, or small impact may occur	Moderate to large impact may occur
a. The proposed action may impact soil classified within soil group 1 through 4 of the NYS Land Classification System.	E2c, E3b	<input type="checkbox"/>	<input type="checkbox"/>
b. The proposed action may sever, cross or otherwise limit access to agricultural land (includes cropland, hayfields, pasture, vineyard, orchard, etc).	E1a, E1b	<input type="checkbox"/>	<input type="checkbox"/>
c. The proposed action may result in the excavation or compaction of the soil profile of active agricultural land.	E3b	<input type="checkbox"/>	<input type="checkbox"/>
d. The proposed action may irreversibly convert agricultural land to non-agricultural uses, either more than 2.5 acres if located in an Agricultural District, or more than 10 acres if not within an Agricultural District.	E1b, E3a	<input type="checkbox"/>	<input type="checkbox"/>
e. The proposed action may disrupt or prevent installation of an agricultural land management system.	E1 a, E1b	<input type="checkbox"/>	<input type="checkbox"/>
f. The proposed action may result, directly or indirectly, in increased development potential or pressure on farmland.	C2c, C3, D2e, D2d	<input type="checkbox"/>	<input type="checkbox"/>
g. The proposed project is not consistent with the adopted municipal Farmland Protection Plan.	C2e	<input type="checkbox"/>	<input type="checkbox"/>
h. Other impacts: _____		<input type="checkbox"/>	<input type="checkbox"/>

Palmertown Range Addition to Moreau Lake State Park
 Management Plan – Master Plan Addendum
 Part 3 – Appendices – Appendix A Full Environmental Assessment Form

9. Impact on Aesthetic Resources
 The land use of the proposed action are obviously different from, or are in sharp contrast to, current land use patterns between the proposed project and a scenic or aesthetic resource. (Part 1, E.1.a, E.1.b, E.3.h.)
 If "Yes", answer questions a - g. If "No", go to Section 10.

NO YES

	Relevant Part I Question(s)	No, or small impact may occur	Moderate to large impact may occur
a. Proposed action may be visible from any officially designated federal, state, or local scenic or aesthetic resource.	E3h	<input type="checkbox"/>	<input type="checkbox"/>
b. The proposed action may result in the obstruction, elimination or significant screening of one or more officially designated scenic views.	E3h, C2b	<input type="checkbox"/>	<input type="checkbox"/>
c. The proposed action may be visible from publicly accessible vantage points: i. Seasonally (e.g., screened by summer foliage, but visible during other seasons) ii. Year round	E3h	<input type="checkbox"/> <input type="checkbox"/>	<input type="checkbox"/> <input type="checkbox"/>
d. The situation or activity in which viewers are engaged while viewing the proposed action is: i. Routine travel by residents, including travel to and from work ii. Recreational or tourism based activities	E3h E2q, E1c	<input type="checkbox"/> <input type="checkbox"/>	<input type="checkbox"/> <input type="checkbox"/>
e. The proposed action may cause a diminishment of the public enjoyment and appreciation of the designated aesthetic resource.	E3h	<input type="checkbox"/>	<input type="checkbox"/>
f. There are similar projects visible within the following distance of the proposed project: 0-1/2 mile 1/4 -3 mile 3-5 mile 5+ mile	D1a, E1a, D1f, D1g	<input type="checkbox"/>	<input type="checkbox"/>
g. Other impacts: _____ _____		<input type="checkbox"/>	<input type="checkbox"/>

10. Impact on Historic and Archeological Resources
 The proposed action may occur in or adjacent to a historic or archaeological resource. (Part 1, E.3.e, f. and g.)
 If "Yes", answer questions a - e. If "No", go to Section 11.

NO YES

	Relevant Part I Question(s)	No, or small impact may occur	Moderate to large impact may occur
a. The proposed action may occur wholly or partially within, or substantially contiguous to, any buildings, archaeological site or district which is listed on or has been nominated by the NYS Board of Historic Preservation for inclusion on the State or National Register of Historic Places.	E3e	<input type="checkbox"/>	<input checked="" type="checkbox"/>
b. The proposed action may occur wholly or partially within, or substantially contiguous to, an area designated as sensitive for archaeological sites on the NY State Historic Preservation Office (SHPO) archaeological site inventory.	E3f	<input checked="" type="checkbox"/>	<input type="checkbox"/>
c. The proposed action may occur wholly or partially within, or substantially contiguous to, an archaeological site not included on the NY SHPO inventory. Source: _____	E3g	<input checked="" type="checkbox"/>	<input type="checkbox"/>

Palmertown Range Addition to Moreau Lake State Park
 Management Plan – Master Plan Addendum
 Part 3 – Appendices – Appendix A Full Environmental Assessment Form

d. Other impacts: _____ _____		<input type="checkbox"/>	<input type="checkbox"/>
e. If any of the above (a-d) are answered "Yes", continue with the following questions to help support conclusions in Part 3:			
i. The proposed action may result in the destruction or alteration of all or part of the site or property.	E3e, E3g, E3f	<input type="checkbox"/>	<input type="checkbox"/>
ii. The proposed action may result in the alteration of the property's setting or integrity.	E3e, E3f, E3g, E1a, E1b	<input type="checkbox"/>	<input type="checkbox"/>
iii. The proposed action may result in the introduction of visual elements which are out of character with the site or property, or may alter its setting.	E3e, E3f, E3g, E3h, C2, C3	<input type="checkbox"/>	<input type="checkbox"/>

11. Impact on Open Space and Recreation The proposed action may result in a loss of recreational opportunities or a reduction of an open space resource as designated in any adopted municipal open space plan. <input checked="" type="checkbox"/> NO <input type="checkbox"/> YES (See Part I. C.2.c, E.1.c., E.2.q.) <i>If "Yes", answer questions a - e. If "No", go to Section 12.</i>			
	Relevant Part I Question(s)	No, or small impact may occur	Moderate to large impact may occur
a. The proposed action may result in an impairment of natural functions, or "ecosystem services", provided by an undeveloped area, including but not limited to stormwater storage, nutrient cycling, wildlife habitat.	D2e, E1b, E2h, E2m, E2o, E2n, E2p	<input type="checkbox"/>	<input type="checkbox"/>
b. The proposed action may result in the loss of a current or future recreational resource.	C2a, E1c, C2c, E2q	<input type="checkbox"/>	<input type="checkbox"/>
c. The proposed action may eliminate open space or recreational resource in an area with few such resources.	C2a, C2c, E1c, E2q	<input type="checkbox"/>	<input type="checkbox"/>
d. The proposed action may result in loss of an area now used informally by the community as an open space resource.	C2c, E1c	<input type="checkbox"/>	<input type="checkbox"/>
e. Other impacts: _____ _____		<input type="checkbox"/>	<input type="checkbox"/>

12. Impact on Critical Environmental Areas The proposed action may be located within or adjacent to a critical environmental area (CEA). (See Part I. E.3.d) <input checked="" type="checkbox"/> NO <input type="checkbox"/> YES <i>If "Yes", answer questions a - c. If "No", go to Section 13.</i>			
	Relevant Part I Question(s)	No, or small impact may occur	Moderate to large impact may occur
a. The proposed action may result in a reduction in the quantity of the resource or characteristic which was the basis for designation of the CEA.	E3d	<input type="checkbox"/>	<input type="checkbox"/>
b. The proposed action may result in a reduction in the quality of the resource or characteristic which was the basis for designation of the CEA.	E3d	<input type="checkbox"/>	<input type="checkbox"/>
c. Other impacts: _____ _____		<input type="checkbox"/>	<input type="checkbox"/>

Palmertown Range Addition to Moreau Lake State Park
 Management Plan – Master Plan Addendum
 Part 3 – Appendices – Appendix A Full Environmental Assessment Form

13. Impact on Transportation
 The proposed action may result in a change to existing transportation systems. NO YES
 (See Part 1. D.2.j)
 If "Yes", answer questions a - g. If "No", go to Section 14.

	Relevant Part I Question(s)	No, or small impact may occur	Moderate to large impact may occur
a. Projected traffic increase may exceed capacity of existing road network.	D2j	<input type="checkbox"/>	<input type="checkbox"/>
b. The proposed action may result in the construction of paved parking area for 500 or more vehicles.	D2j	<input type="checkbox"/>	<input type="checkbox"/>
c. The proposed action will degrade existing transit access.	D2j	<input type="checkbox"/>	<input type="checkbox"/>
d. The proposed action will degrade existing pedestrian or bicycle accommodations.	D2j	<input type="checkbox"/>	<input type="checkbox"/>
e. The proposed action may alter the present pattern of movement of people or goods.	D2j	<input type="checkbox"/>	<input type="checkbox"/>
f. Other impacts: _____		<input type="checkbox"/>	<input type="checkbox"/>

14. Impact on Energy
 The proposed action may cause an increase in the use of any form of energy. NO YES
 (See Part 1. D.2.k)
 If "Yes", answer questions a - e. If "No", go to Section 15.

	Relevant Part I Question(s)	No, or small impact may occur	Moderate to large impact may occur
a. The proposed action will require a new, or an upgrade to an existing, substation.	D2k	<input type="checkbox"/>	<input type="checkbox"/>
b. The proposed action will require the creation or extension of an energy transmission or supply system to serve more than 50 single or two-family residences or to serve a commercial or industrial use.	D1f, D1q, D2k	<input type="checkbox"/>	<input type="checkbox"/>
c. The proposed action may utilize more than 2,500 MWhrs per year of electricity.	D2k	<input type="checkbox"/>	<input type="checkbox"/>
d. The proposed action may involve heating and/or cooling of more than 100,000 square feet of building area when completed.	D1g	<input type="checkbox"/>	<input type="checkbox"/>
e. Other Impacts: _____			

15. Impact on Noise, Odor, and Light
 The proposed action may result in an increase in noise, odors, or outdoor lighting. NO YES
 (See Part 1. D.2.m., n., and o.)
 If "Yes", answer questions a - f. If "No", go to Section 16.

	Relevant Part I Question(s)	No, or small impact may occur	Moderate to large impact may occur
a. The proposed action may produce sound above noise levels established by local regulation.	D2m	<input type="checkbox"/>	<input type="checkbox"/>
b. The proposed action may result in blasting within 1,500 feet of any residence, hospital, school, licensed day care center, or nursing home.	D2m, B1d	<input type="checkbox"/>	<input type="checkbox"/>
c. The proposed action may result in routine odors for more than one hour per day.	D2o	<input type="checkbox"/>	<input type="checkbox"/>

Palmertown Range Addition to Moreau Lake State Park
 Management Plan – Master Plan Addendum
 Part 3 – Appendices – Appendix A Full Environmental Assessment Form

d. The proposed action may result in light shining onto adjoining properties.	D2n	<input type="checkbox"/>	<input type="checkbox"/>
e. The proposed action may result in lighting creating sky-glow brighter than existing area conditions.	D2n, E1a	<input type="checkbox"/>	<input type="checkbox"/>
f. Other impacts: _____		<input type="checkbox"/>	<input type="checkbox"/>

16. Impact on Human Health The proposed action may have an impact on human health from exposure to new or existing sources of contaminants. (See Part 1.D.2.q., E.1. d, f, g, and h.) <input checked="" type="checkbox"/> NO <input type="checkbox"/> YES <i>If "Yes", answer questions a - m. If "No", go to Section 17.</i>				
	Relevant Part I Question(s)	No, or small impact may occur	Moderate to large impact may occur	
a.	The proposed action is located within 1500 feet of a school, hospital, licensed day care center, group home, nursing home or retirement community.	E1d	<input type="checkbox"/>	<input type="checkbox"/>
b.	The site of the proposed action is currently undergoing remediation.	E1g, E1h	<input type="checkbox"/>	<input type="checkbox"/>
c.	There is a completed emergency spill remediation, or a completed environmental site remediation on, or adjacent to, the site of the proposed action.	E1g, E1h	<input type="checkbox"/>	<input type="checkbox"/>
d.	The site of the action is subject to an institutional control limiting the use of the property (e.g., easement or deed restriction).	E1g, E1h	<input type="checkbox"/>	<input type="checkbox"/>
e.	The proposed action may affect institutional control measures that were put in place to ensure that the site remains protective of the environment and human health.	E1g, E1h	<input type="checkbox"/>	<input type="checkbox"/>
f.	The proposed action has adequate control measures in place to ensure that future generation, treatment and/or disposal of hazardous wastes will be protective of the environment and human health.	D2t	<input type="checkbox"/>	<input type="checkbox"/>
g.	The proposed action involves construction or modification of a solid waste management facility.	D2q, E1f	<input type="checkbox"/>	<input type="checkbox"/>
h.	The proposed action may result in the unearthing of solid or hazardous waste.	D2q, E1f	<input type="checkbox"/>	<input type="checkbox"/>
i.	The proposed action may result in an increase in the rate of disposal, or processing, of solid waste.	D2r, D2s	<input type="checkbox"/>	<input type="checkbox"/>
j.	The proposed action may result in excavation or other disturbance within 2000 feet of a site used for the disposal of solid or hazardous waste.	E1f, E1g, E1h	<input type="checkbox"/>	<input type="checkbox"/>
k.	The proposed action may result in the migration of explosive gases from a landfill site to adjacent off site structures.	E1f, E1g	<input type="checkbox"/>	<input type="checkbox"/>
l.	The proposed action may result in the release of contaminated leachate from the project site.	D2s, E1f, D2r	<input type="checkbox"/>	<input type="checkbox"/>
m.	Other impacts: _____			

Palmertown Range Addition to Moreau Lake State Park
 Management Plan – Master Plan Addendum
 Part 3 – Appendices – Appendix A Full Environmental Assessment Form

17. Consistency with Community Plans The proposed action is not consistent with adopted land use plans. <input checked="" type="checkbox"/> NO <input type="checkbox"/> YES (See Part 1. C.1, C.2, and C.3.) If "Yes", answer questions a - h. If "No", go to Section 18.			
	Relevant Part I Question(s)	No, or small impact may occur	Moderate to large impact may occur
a. The proposed action's land use components may be different from, or in sharp contrast to, current surrounding land use pattern(s).	C2, C3, D1a E1a, E1b	<input type="checkbox"/>	<input type="checkbox"/>
b. The proposed action will cause the permanent population of the city, town or village in which the project is located to grow by more than 5%.	C2	<input type="checkbox"/>	<input type="checkbox"/>
c. The proposed action is inconsistent with local land use plans or zoning regulations.	C2, C2, C3	<input type="checkbox"/>	<input type="checkbox"/>
d. The proposed action is inconsistent with any County plans, or other regional land use plans.	C2, C2	<input type="checkbox"/>	<input type="checkbox"/>
e. The proposed action may cause a change in the density of development that is not supported by existing infrastructure or is distant from existing infrastructure.	C3, D1c, D1d, D1f, D1d, E1b	<input type="checkbox"/>	<input type="checkbox"/>
f. The proposed action is located in an area characterized by low density development that will require new or expanded public infrastructure.	C4, D2e, D2d D2j	<input type="checkbox"/>	<input type="checkbox"/>
g. The proposed action may induce secondary development impacts (e.g., residential or commercial development not included in the proposed action)	C2a	<input type="checkbox"/>	<input type="checkbox"/>
h. Other: _____		<input type="checkbox"/>	<input type="checkbox"/>

18. Consistency with Community Character The proposed project is inconsistent with the existing community character. <input checked="" type="checkbox"/> NO <input type="checkbox"/> YES (See Part 1. C.2, C.3, D.2, E.3) If "Yes", answer questions a - g. If "No", proceed to Part 3.			
	Relevant Part I Question(s)	No, or small impact may occur	Moderate to large impact may occur
a. The proposed action may replace or eliminate existing facilities, structures, or areas of historic importance to the community.	E3e, E3f, E3g	<input type="checkbox"/>	<input type="checkbox"/>
b. The proposed action may create a demand for additional community services (e.g. schools, police and fire)	C4	<input type="checkbox"/>	<input type="checkbox"/>
c. The proposed action may displace affordable or low-income housing in an area where there is a shortage of such housing.	C2, C3, D1f D1g, E1a	<input type="checkbox"/>	<input type="checkbox"/>
d. The proposed action may interfere with the use or enjoyment of officially recognized or designated public resources.	C2, E3	<input type="checkbox"/>	<input type="checkbox"/>
e. The proposed action is inconsistent with the predominant architectural scale and character.	C2, C3	<input type="checkbox"/>	<input type="checkbox"/>
f. Proposed action is inconsistent with the character of the existing natural landscape.	C2, C3 E1a, E1b E2g, E2h	<input type="checkbox"/>	<input type="checkbox"/>
g. Other impacts: _____		<input type="checkbox"/>	<input type="checkbox"/>

PRINT FULL FORM

Agency Use Only [If Applicable]	
Project :	Palmertown Range Management Plan
Date :	

Full Environmental Assessment Form
Part 3 - Evaluation of the Magnitude and Importance of Project Impacts
and
Determination of Significance

Part 3 provides the reasons in support of the determination of significance. The lead agency must complete Part 3 for every question in Part 2 where the impact has been identified as potentially moderate to large or where there is a need to explain why a particular element of the proposed action will not, or may, result in a significant adverse environmental impact.

Based on the analysis in Part 3, the lead agency must decide whether to require an environmental impact statement to further assess the proposed action or whether available information is sufficient for the lead agency to conclude that the proposed action will not have a significant adverse environmental impact. By completing the certification on the next page, the lead agency can complete its determination of significance.

Reasons Supporting This Determination:

To complete this section:

- Identify the impact based on the Part 2 responses and describe its magnitude. Magnitude considers factors such as severity, size or extent of an impact.
- Assess the importance of the impact. Importance relates to the geographic scope, duration, probability of the impact occurring, number of people affected by the impact and any additional environmental consequences if the impact were to occur.
- The assessment should take into consideration any design element or project changes.
- Repeat this process for each Part 2 question where the impact has been identified as potentially moderate to large or where there is a need to explain why a particular element of the proposed action will not, or may, result in a significant adverse environmental impact.
- Provide the reason(s) why the impact may, or will not, result in a significant adverse environmental impact
- For Conditional Negative Declarations identify the specific condition(s) imposed that will modify the proposed action so that no significant adverse environmental impacts will result.
- Attach additional sheets, as needed.

SEE ATTACHED

Determination of Significance - Type 1 and Unlisted Actions

SEQR Status:	<input checked="" type="checkbox"/> Type 1	<input type="checkbox"/> Unlisted	
Identify portions of EAF completed for this Project:	<input checked="" type="checkbox"/> Part 1	<input checked="" type="checkbox"/> Part 2	<input checked="" type="checkbox"/> Part 3

Upon review of the information recorded on this EAF, as noted, plus this additional support information

and considering both the magnitude and importance of each identified potential impact, it is the conclusion of the
New York State Office of Parks, Recreation and Historic Preservation as lead agency that:

A. This project will result in no significant adverse impacts on the environment, and, therefore, an environmental impact statement need not be prepared. Accordingly, this negative declaration is issued.

B. Although this project could have a significant adverse impact on the environment, that impact will be avoided or substantially mitigated because of the following conditions which will be required by the lead agency:

There will, therefore, be no significant adverse impacts from the project as conditioned, and, therefore, this conditioned negative declaration is issued. A conditioned negative declaration may be used only for UNLISTED actions (see 6 NYCRR 617.d).

C. This Project may result in one or more significant adverse impacts on the environment, and an environmental impact statement must be prepared to further assess the impact(s) and possible mitigation and to explore alternatives to avoid or reduce those impacts. Accordingly, this positive declaration is issued.

Name of Action: Palmertown Range Addition to Moreau Lake State Park Management Plan

Name of Lead Agency: NYS Office of Parks, Recreation and Historic Preservation

Name of Responsible Officer in Lead Agency: Alane Ball Chinian

Title of Responsible Officer: Regional Director - Saratoga Capital District Region

Signature of Responsible Officer in Lead Agency: *Alane Ball Chinian* Date: 1/11/16

Signature of Preparer (if different from Responsible Officer) Karen Terbush, Environmental Analyst 2 Date: Dec. 29, 2015

For Further Information:

Contact Person: Salim Chishti, Park Planner

Address: OPRHP Planning Bureau, 625 Broadway, Albany, NY 12207

Telephone Number: 518-474-6722

E-mail: salim.chishti@parks.ny.gov

For Type 1 Actions and Conditioned Negative Declarations, a copy of this Notice is sent to:

Chief Executive Officer of the political subdivision in which the action will be principally located (e.g., Town / City / Village of)

Other involved agencies (if any)

Applicant (if any)

Environmental Notice Bulletin: <http://www.dec.ny.gov/enb/enb.html>

PRINT FULL FORM

Palmertown Range Addition to Moreau Lake State Park
Management Plan – Master Plan Addendum
Part 3 – Appendices – Appendix A Full Environmental Assessment Form

Full EAF Part 3: Adoption and Implementation of the Management Plan for the Palmertown Range Addition to Moreau Lake State Park – Towns of Moreau, Wilton and Corinth

As discussed in Part 1, this project involves adoption and implementation of a management plan for new lands recently acquired as additions to Moreau Lake State Park. The only development proposed within the plan includes two small (60'X100') gravel parking lots and approximately 7 miles of new, 2 ft wide multi-use trails and some signage and kiosks. In addition, the plan includes additional designations of the new parkland and additional areas of Moreau Lake State Park as Bird Conservation Areas, Natural Heritage Areas, and Park Preservation Areas.

Impact on Land: The impact on land will be very small, involving total physical disturbance of only about 2 acres for all of the trail work and the 2 proposed parking areas combined. Trails will be single track, non-motorized, multi-use trails. Grading and landform modifications for the trails will be as minimal as possible and no trees will be removed for the trail installations. Some small sections of trails may require grading and switchbacks to reduce or eliminate erosion. The exact location of the trails will be routed on site with State Park biologists and engineers determining the best route to minimize impacts. There will be some tree removal for construction of the parking lots amounting to less than one third of an acre total. Trees will be removed during the winter as discussed below under Wildlife impacts, thus further reducing impacts on land and the potential for erosion. Nonetheless, erosion controls will be put in place where necessary to protect nearby water resources.

Impact on Surface Water: No impacts on surface water are anticipated. The management plan was designed to protect Lake Bonita and Lake Ann by not allowing any development near the lakes. One of the major trails proposed goes around Lake Bonita but far enough from the water that the lake will not be impacted. A few spur trails will be provided to the lake shore in areas with rock outcroppings along the shoreline for fishing and scenic views. Boating and the use of live bait will not be allowed on the lake. These measures should help protect the lake from the spread of aquatic invasive species.

Impact on Plants and Animals: As discussed above, construction of the two parking areas will involve removal of approximately 1/3 acre of trees in a significant hemlock-northern hardwood ecological community. This is a very small impact on this overall community of over 2,000 acres within the park. A search of the New York Natural Heritage Database has not indicated the presence of any rare plants in this area, however, a State Park Biologist will survey the locations of trails and parking areas before the final locations are determined to assure that no rare plants will be impacted.

New York State Parks Environmental Management Bureau has issued guidance to address bat species occurring in New York State that are protected under the federal Endangered Species Act. The Indiana Bat is on the Endangered Species list (both State and Federal) and the northern long-eared bat is listed as federally Threatened. The EMB guidance follows the US Fish and Wildlife Service and DEC guidelines for these species and recommends that for protection of these tree-nesting species of bats, any work involving the removal of trees be conducted from October 1 – April 1 in areas where these species are found. A search of the NY Natural Heritage Database did not indicate the presence of any rare animals in the vicinity of the project area indicating that known habitat for the rare bats is at least ½ mile from

Palmertown Range Addition to Moreau Lake State Park
Management Plan – Master Plan Addendum
Part 3 – Appendices – Appendix A Full Environmental Assessment Form

the project location. However, Moreau Lake State Park is located between two known hibernacula for bats and another is not far away. These 3 hibernacula are all in what is technically the Palmertown Range. The US Fish and Wildlife Service Guidelines would strongly suggest that in order to protect the rare bats, any tree cutting for this project should be conducted during the winter months. Although no federal permits are required for this project, State Parks has determined that it will take a conservative approach and plans to conduct the tree removals during the winter months. This approach will also be beneficial in protecting migratory birds that could be nesting during the spring and summer months.

The importance of the Natural Resources in the park and in this new acquisition area is recognized by the designations of major portions of Moreau Lake State Park and the entire new property as Bird Conservation Area, Natural Heritage Area, and Park Preservation Area. The PPA designation recognizes that the area proposed for designation is an invaluable and irreplaceable part of the state's natural heritage, which warrants special recognition and protection for future generations. Consistent with Article 20 of Parks, Recreation and Historic Preservation Law, very little development will occur within the PPA and environmental education will be encouraged in this area of the park.

Impact on Historic and Archeological Resources: The project area is adjacent to the Grant Cottage State Historic Site which is listed on the National Register of Historic Places. This site will not be impacted by any of the proposed development. Development of the new access point at the end of Mt McGregor road could have a beneficial impact on the historic site as visitors to this area of the park may also visit the nearby historic site. New trails will also provide better access from the park to the historic site.

As discussed within the Management Plan, the McGregor Parcel includes part of the former Metropolitan Life Insurance Company Sanatorium which has been determined to be eligible for listing in the State and National Registers of Historic Places. While most of the historic buildings and structures associated with the Sanatorium are located on the portion of the former Mount McGregor Correctional Facility that has been retained by the Empire State Development Corporation, the new parkland does include a few contributing features. These include the pump house at Lake Bonita, Lake Anne, and Lake Bonita and a network of carriage roads and small formal gardens. These resources will be preserved and protected as part of the Management Plan.

The management plan was reviewed by the State Historic Preservation Office (SHPO). The SHPO has determined that adoption and implementation of the plan will have no adverse impact upon historic or cultural resources (Flagg 2016).

Impact on Open Space and Recreation: Implementation of The Palmertown Range Management Plan will result in beneficial impacts on the availability of recreational opportunities in a new area of Moreau Lake State Park. The trail system will be expanded by approximately 7 miles and new fishing opportunities will be available on Lake Bonita as well.

Based on the information in the Full EAF – Parts 1, 2 and 3 and the discussion above, NYS Office of Parks, Recreation and Historic Preservation, as Lead Agency has determined that the adoption and

Palmertown Range Addition to Moreau Lake State Park
Management Plan – Master Plan Addendum
Part 3 – Appendices – Appendix A Full Environmental Assessment Form

implementation of the Palmertown Range Addition to Moreau Lake State Park Management Plan will not result in any significant adverse impacts.

References:

Flagg, Christopher 2016. Memorandum to Mr. Salim Chishti from Christopher Flagg, NYS Historic Preservation Office RE: OPRHP/SEQR Addendum to Moreau Lake State Park Master Plan (Palmertown Range Addition Management Plan) Moreau Lake State Park, Towns of Corinth, Moreau and Wilton, Saratoga County, Project Review #:16PR00045. Dated: January 5, 2016.

Palmertown Range Addition to Moreau Lake State Park
 Management Plan – Master Plan Addendum
 Figure 4 – Bird Conservation Area

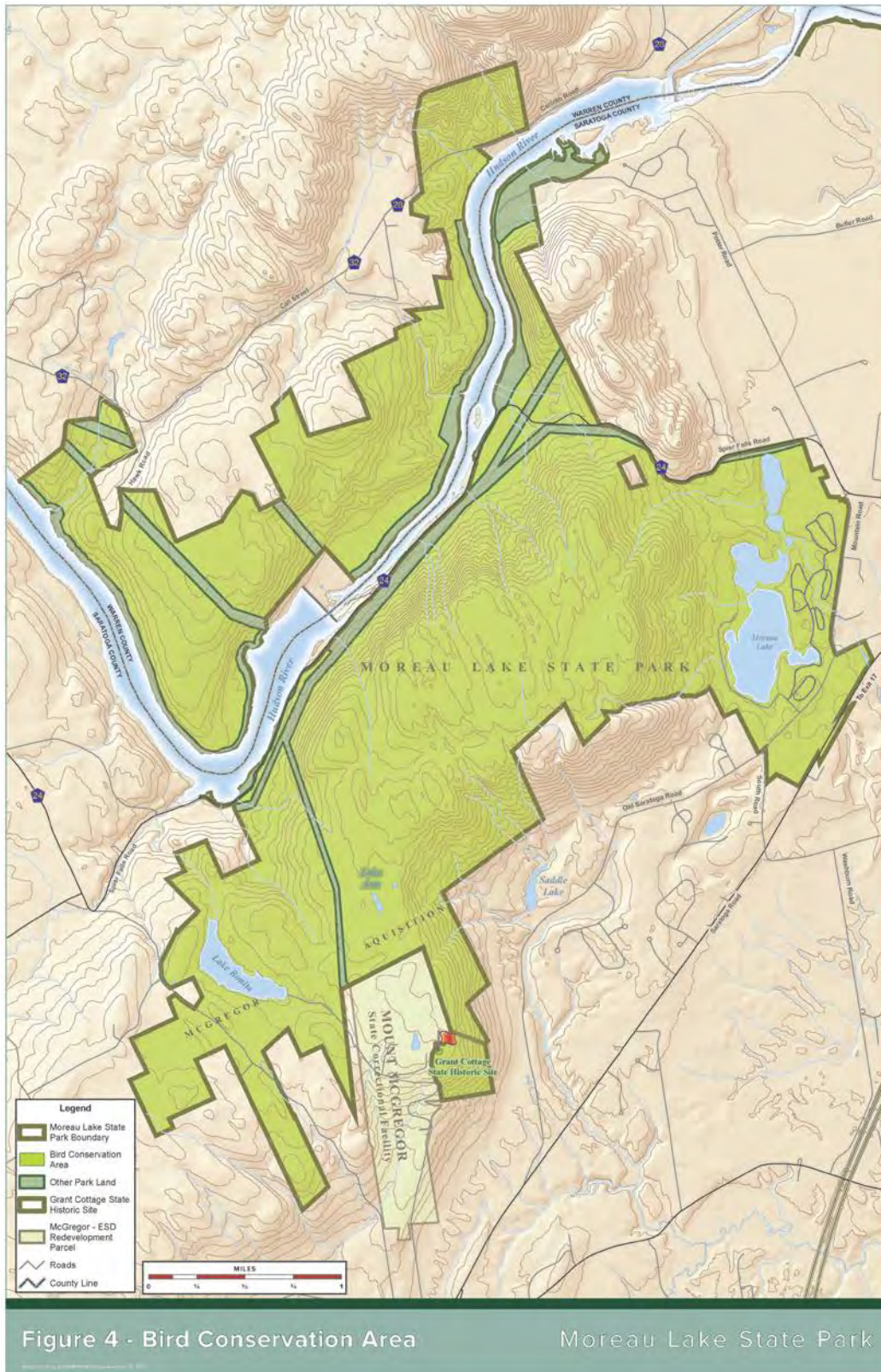


Figure 4 - Bird Conservation Area

Moreau Lake State Park

Figure 4 Bird Conservation Area

Palmertown Range Addition to Moreau Lake State Park
 Management Plan – Master Plan Addendum
 Figure 5 – Natural Heritage Area

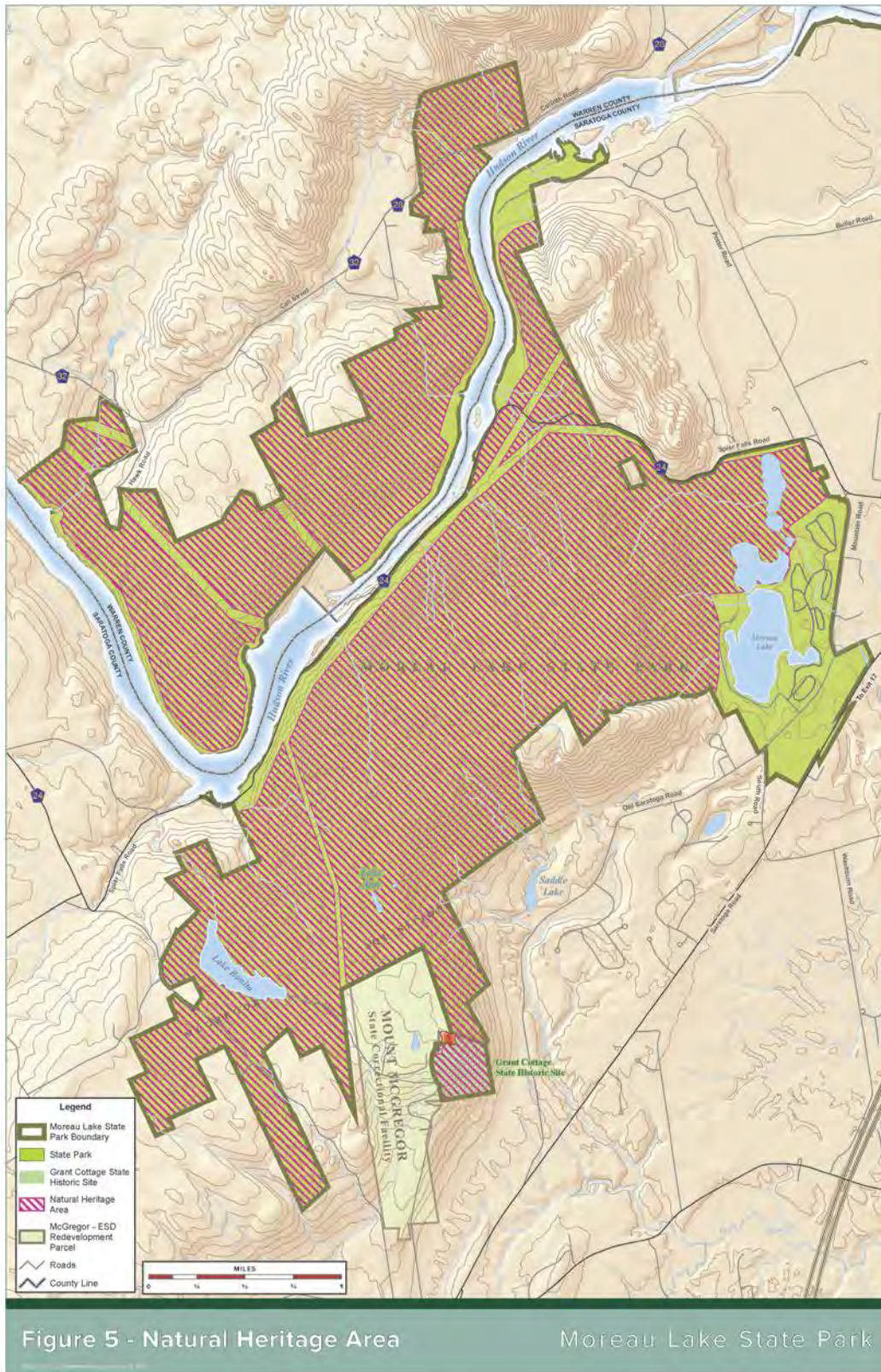


Figure 5 - Natural Heritage Area

Moreau Lake State Park

Figure 5 Natural Heritage Area

Palmertown Range Addition to Moreau Lake State Park
Management Plan – Master Plan Addendum
Figure 6 – Park Preservation Area

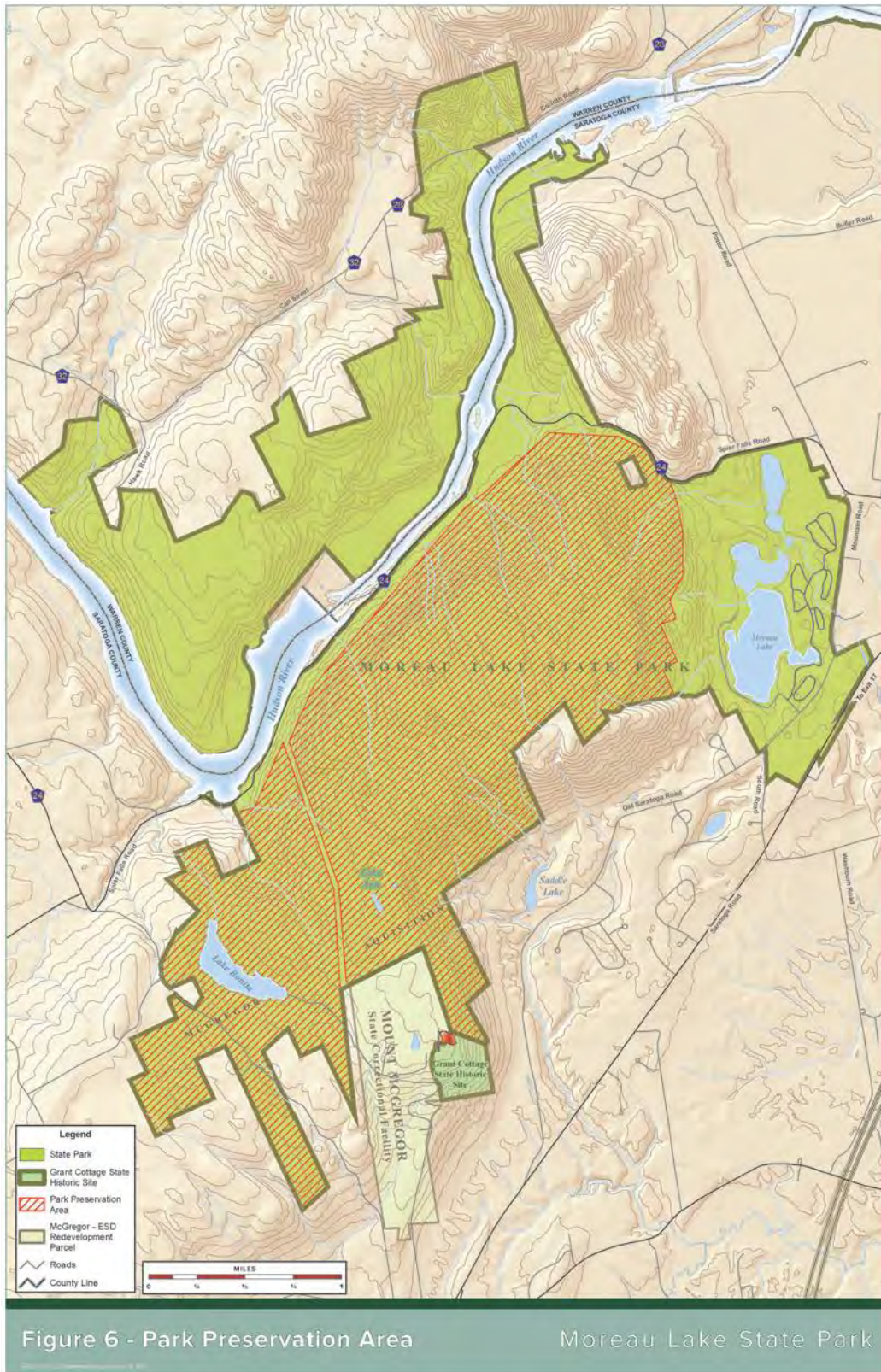


Figure 6 Park Preservation Area

Palmertown Range Addition to Moreau Lake State Park
 Management Plan – Master Plan Addendum
 Figure 7 – Management Areas

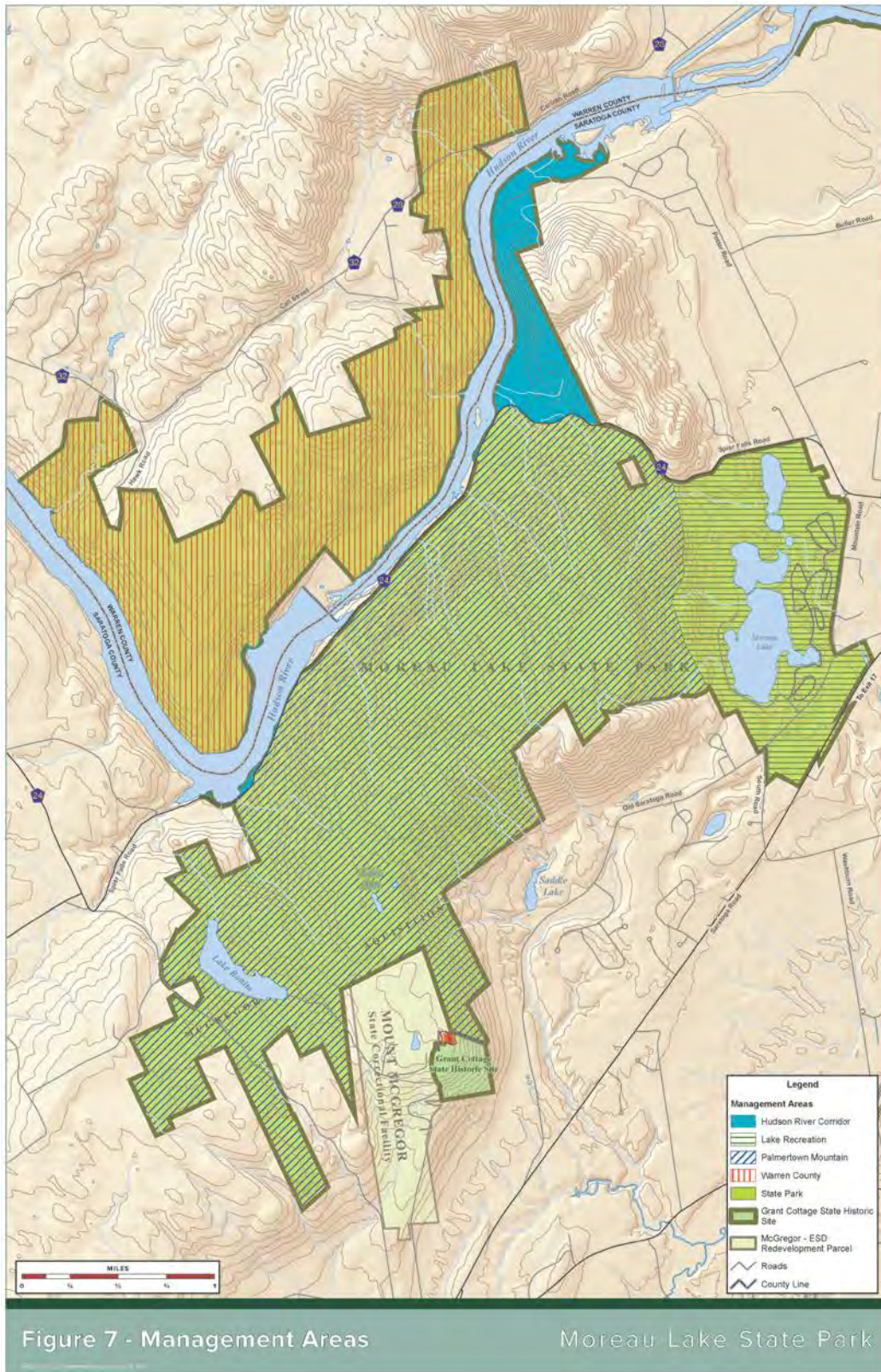


Figure 7 - Management Areas

Moreau Lake State Park

Figure 7 Management Areas

Palmertown Range Addition to Moreau Lake State Park
 Management Plan – Master Plan Addendum
 Figure 8 – Vicinity Map

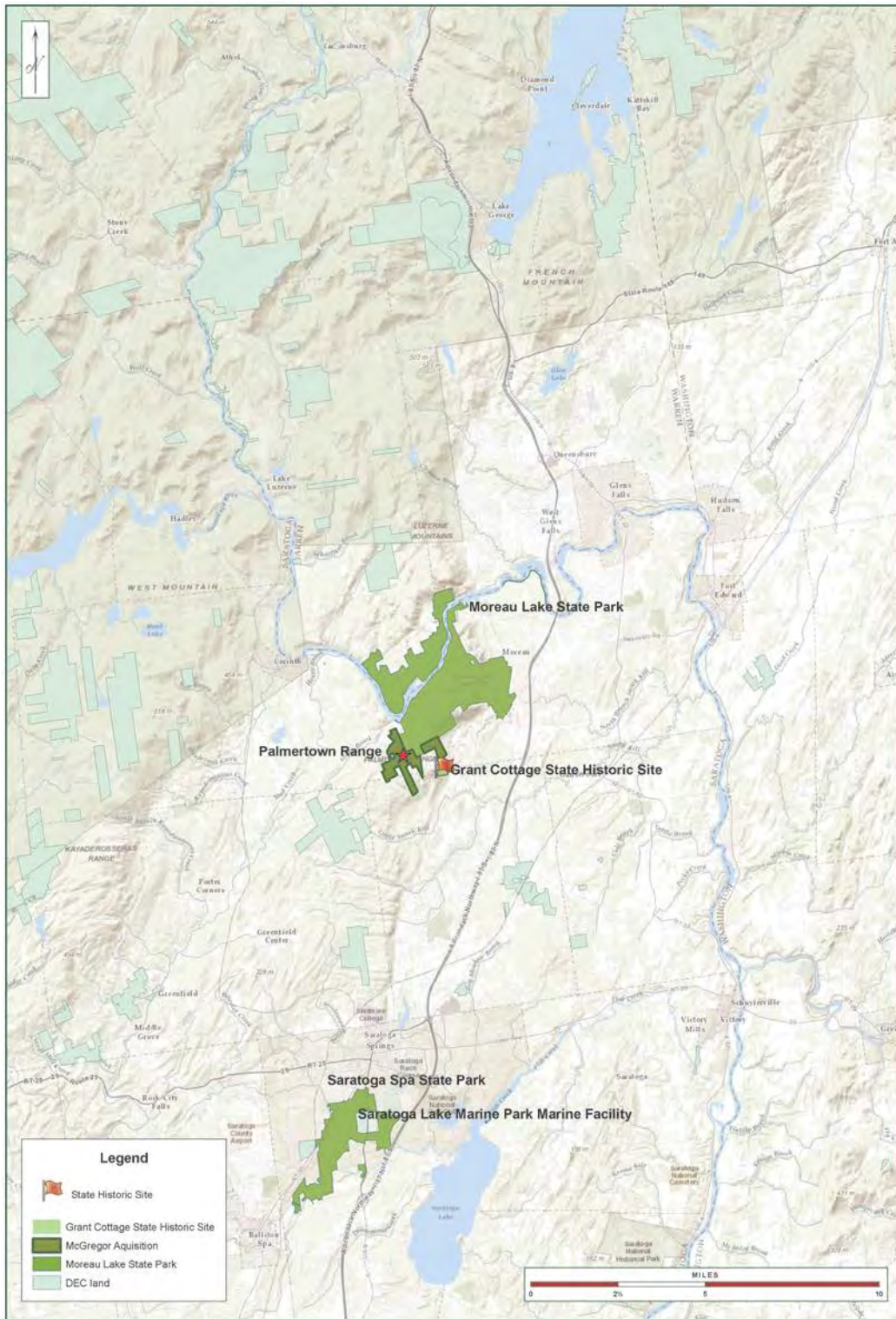


Figure 8 - Vicinity Map Moreau Lake State Park

Figure 8 Vicinity Map

Palmertown Range Addition to Moreau Lake State Park
Management Plan – Master Plan Addendum
Figure 9 - Topography

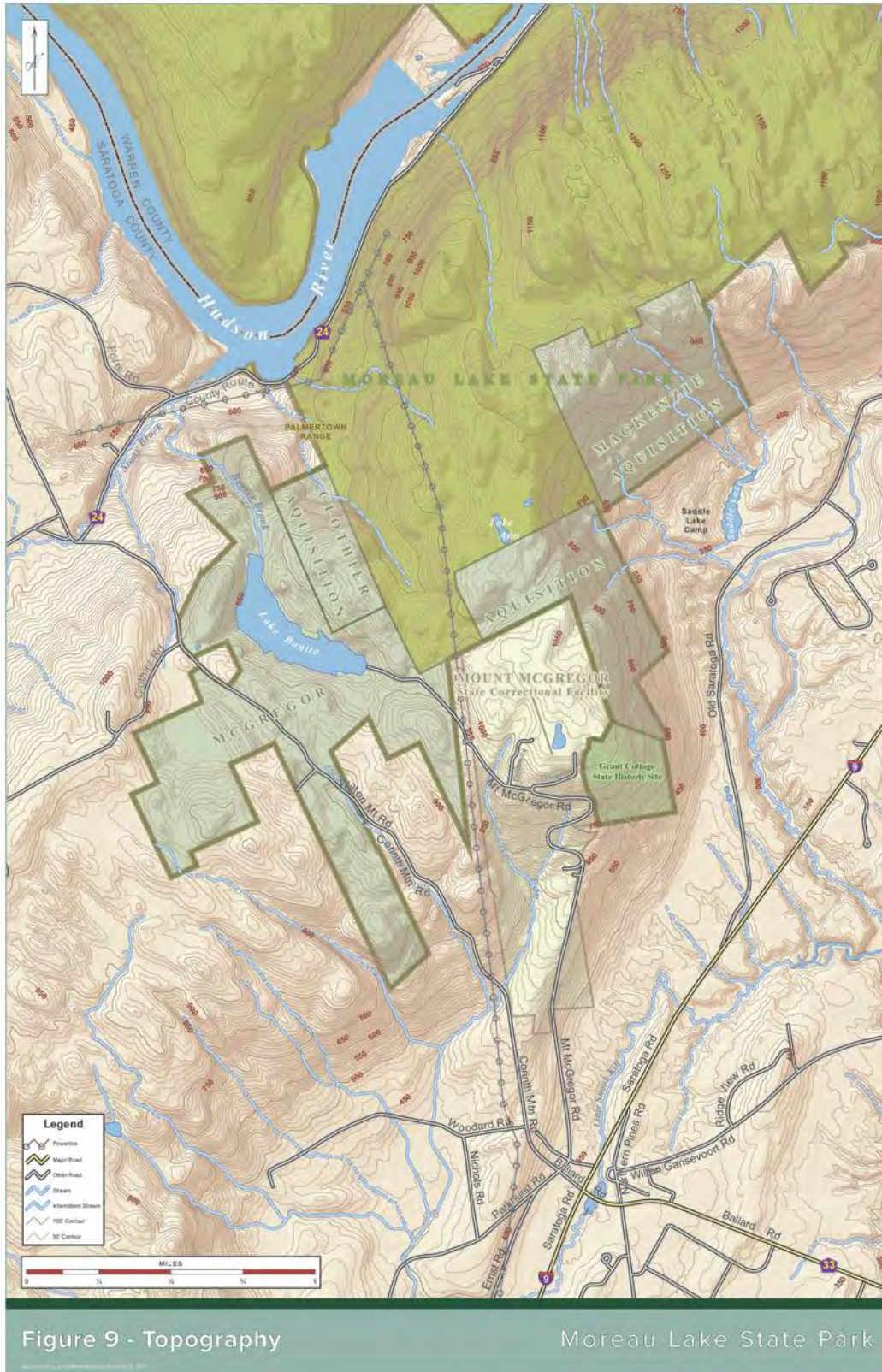


Figure 9 Topography