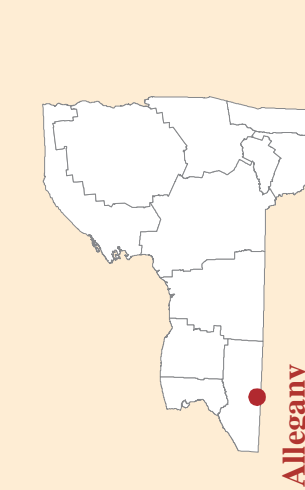




Master Plan Allegheny State Park

Map produced by NYSORHP-GIS Unit, June 30, 2016.



Scenic Resource Protection

- Management and preservation of flora and fauna observation areas
- Management and preservation of vista points

Cultural Resource Protection
Archaeological Resources

- Proposed projects that could result in ground disturbance will require consultation with the Field Services Bureau

Historic Resources

- Rehabilitation and/or modification of contributing structures will be in conformance with the Letter of Resolution
- Cabin rehabilitations and replacements will continue with approved designs

Cain Hollow

- New carry-in camping area
- New basketball court at Cain Hollow

New Boat Launch

- New car top boat launch at southern end of Quaker Lake

Wolf Run

- New backpack camping

Gateway Entrance

- New premier gateway entrance on ASP 2 to include
- Camping registration
- Visitor information services

Maintenance Area

- Relocated Red House maintenance area

Sawmill

- Sawmill and buildings to be stabilized
- Will be available for guided tours and interpretation

Administration Building

- Building will be restored including energy conservation, historic considerations, window restorations and ADA compliance
- Comprehensive landscape plan
- Historic structures report to be written

Beehunter Area

- New visitor/nature center
- New amphitheater

Art Roscoe Ski Touring Area

- Expand warming hut

Bova Road Area

- New full service cottages on Bova Road above Camp Allegheny

Red House Campground Area

- Lower density in Red House Camping Area
- Recreational Vehicle Sites

Group Camp 10

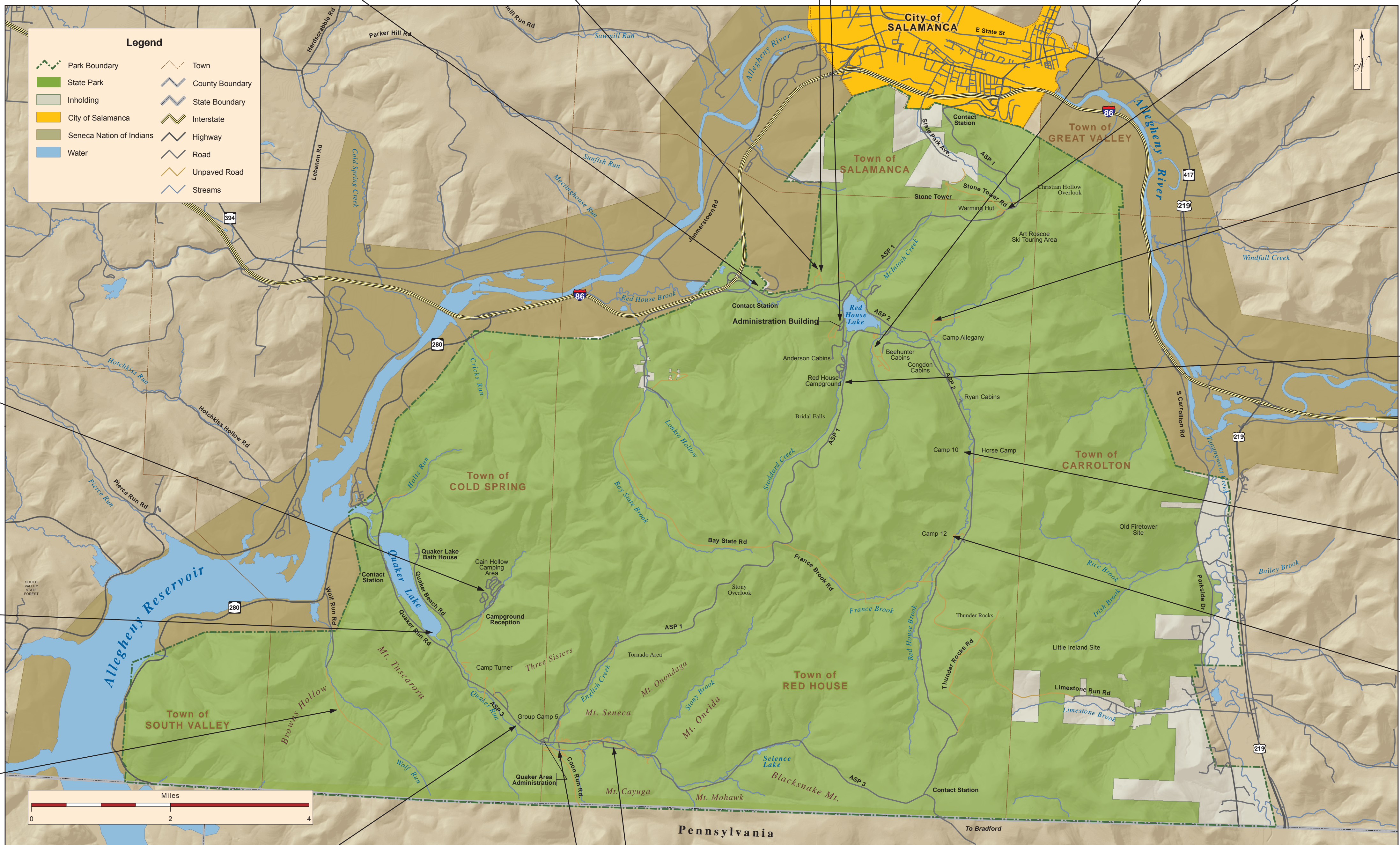
- New equestrian camping Center along with existing facilities

Group Camp 12

- New cabins in the same style as the existing ones
- New wash house
- Rehabilitated mess hall
- Improved landscape infrastructure and drainage

Natural Resource Protection

- Entire park designated as a Bird Conservation Area
- Entire park designated as a Natural Heritage Area
- 83% of the park designated as a Park Preservation Area
- Stream protection and monitoring
- Maintenance dredging of lakes as needed
- Survey and control of Eurasian Water Milfoil in Quaker and Red House Lakes
- Periodic mowing of open fields
- Invasive species management plan



Group Camp 5

- New barracks style accommodations
- New washhouse

Maintenance Area

- Relocated regional maintenance area

Parallel Trail

- Additional new full service cottages

Trails

- New 7.6-mile Quaker Area Bikeway
- 58 miles of trails designated for biking.
- 20-mile network of single-track mountain biking trails
- Designated trails open for equestrian use expanded to 67 miles
- Hiking trail network expanded to 185 miles of single use and shared trails.
- Art Roscoe Ski Touring Area will be rehabilitated and upgraded
- Network of designated snowmobile trails expanded to 88 miles
- Three new snowmobile and equestrian staging areas
- Trailhead parking areas improved
- New interpretive trails