

Figure 08 - Elevations

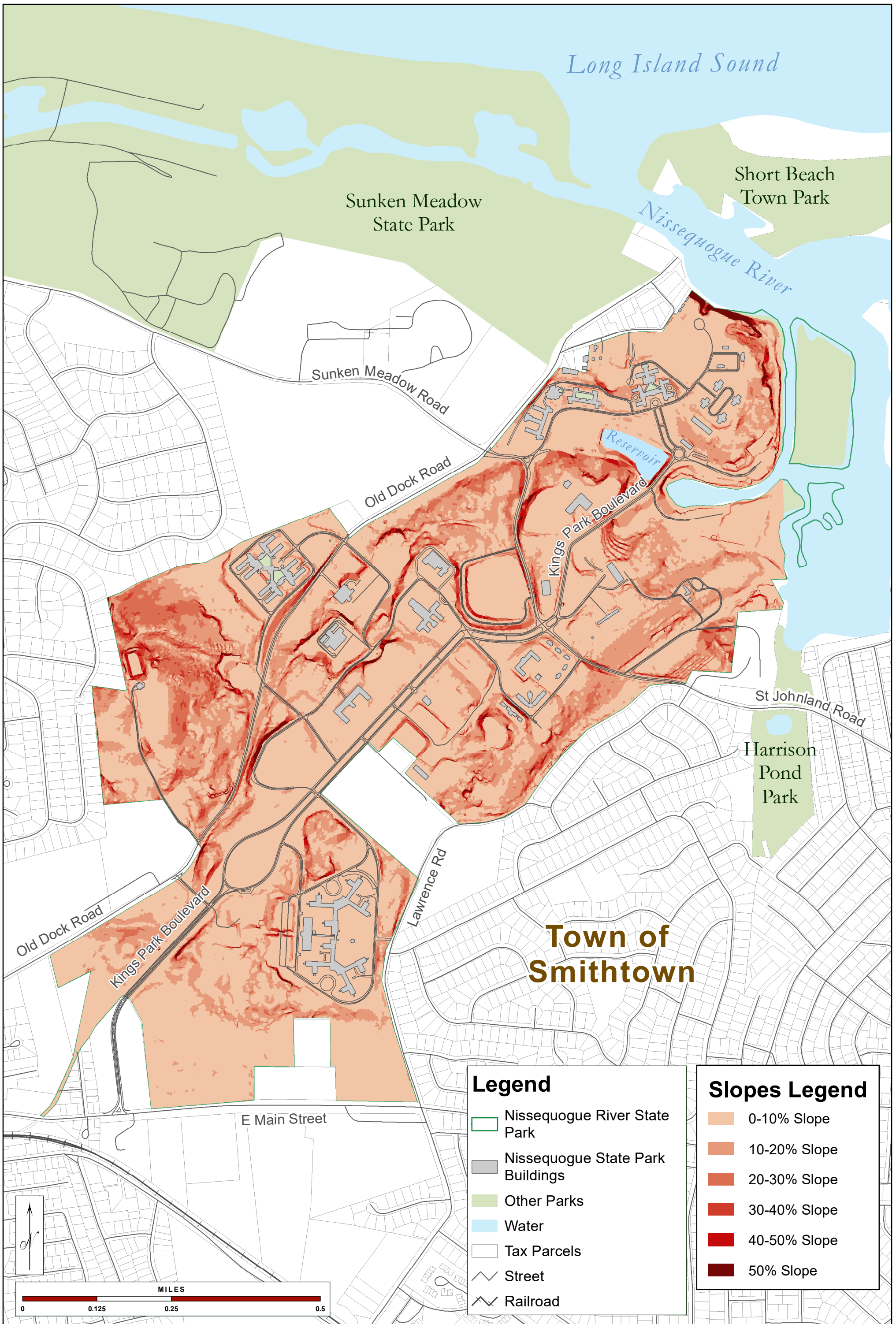


Figure 09 - Slope Analysis

Map produced by NYS OPRHP GIS Bureau, September 09, 2021

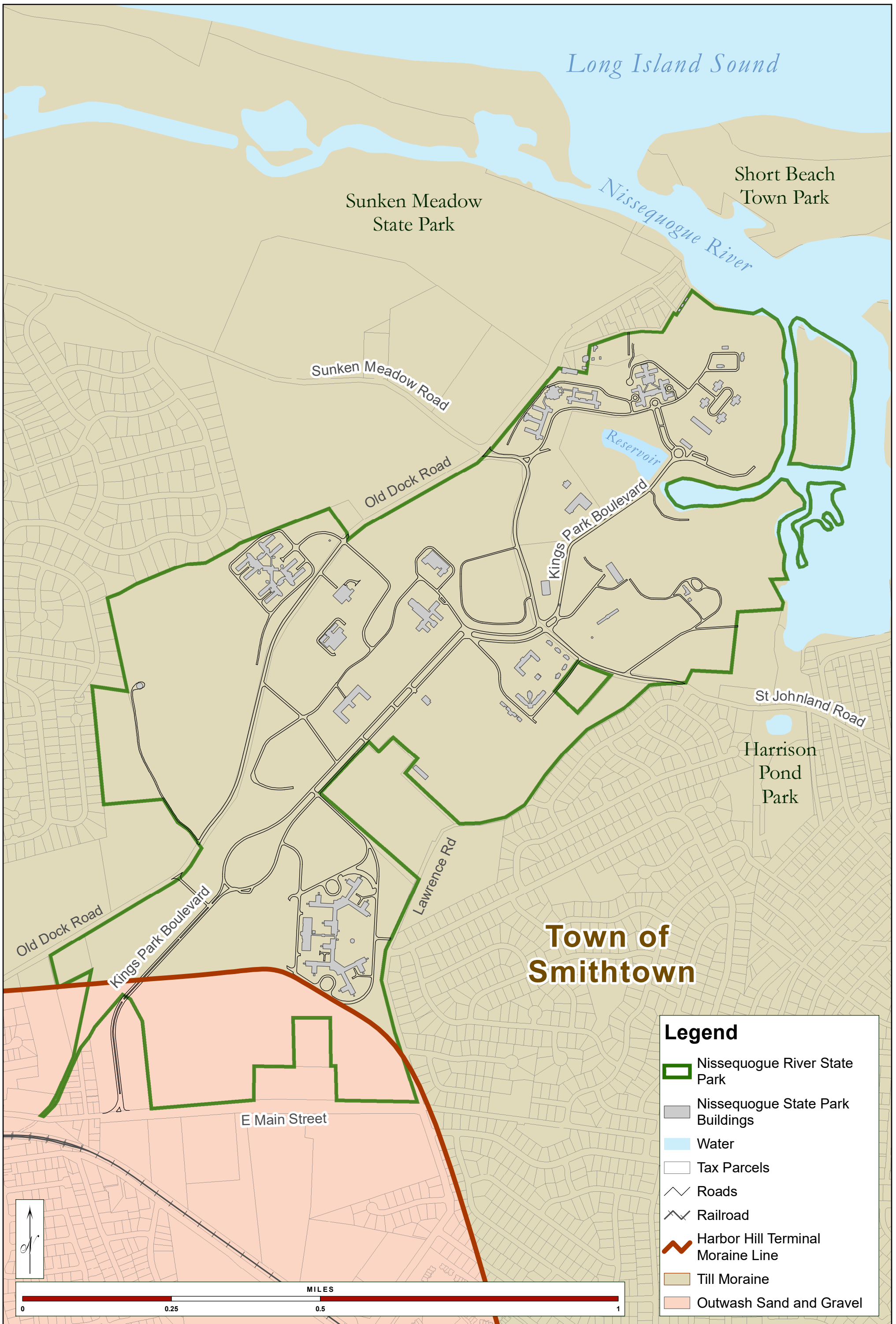


Figure 10 - Surficial Geology

Map produced by NYS OPRHP GIS Bureau, September 09, 2021

Legend

Hydrologic Soil Group A – High Infiltration

- CpA,C,E - Carver and Plymouth Sands
- PmC3 - Plymouth Loamy Coarse Sand
- RdA,B,C - Riverhead Sandy Loam
- RhB - Riverhead and Haven Soils, Graded

Hydrologic Soil Group B – Moderate Infiltration

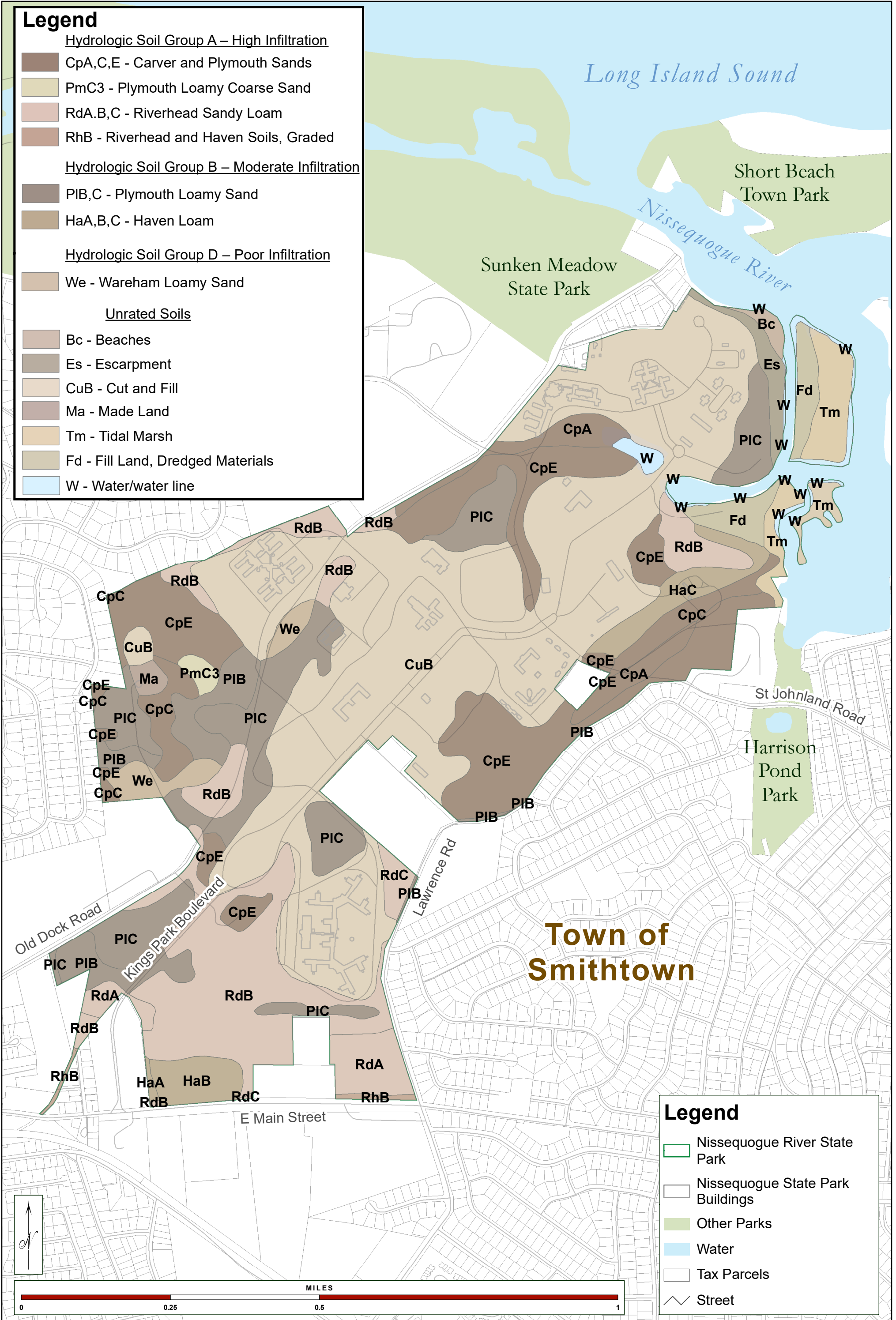
- PIB,C - Plymouth Loamy Sand
- HaA,B,C - Haven Loam

Hydrologic Soil Group D – Poor Infiltration

- We - Wareham Loamy Sand

Unrated Soils

- Bc - Beaches
- Es - Escarpment
- CuB - Cut and Fill
- Ma - Made Land
- Tm - Tidal Marsh
- Fd - Fill Land, Dredged Materials
- W - Water/water line



Legend

- Nissequogue River State Park
- Nissequogue State Park Buildings
- Other Parks
- Water
- Tax Parcels
- Street

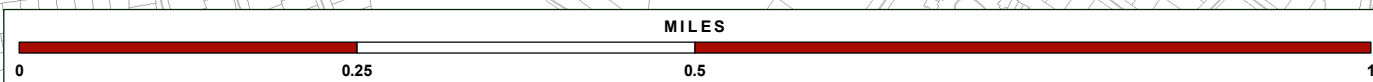


Figure 11 - Soils

Map produced by NYS OPRHP GIS Bureau, September 09, 2021.



Figure 12 - Water Resources

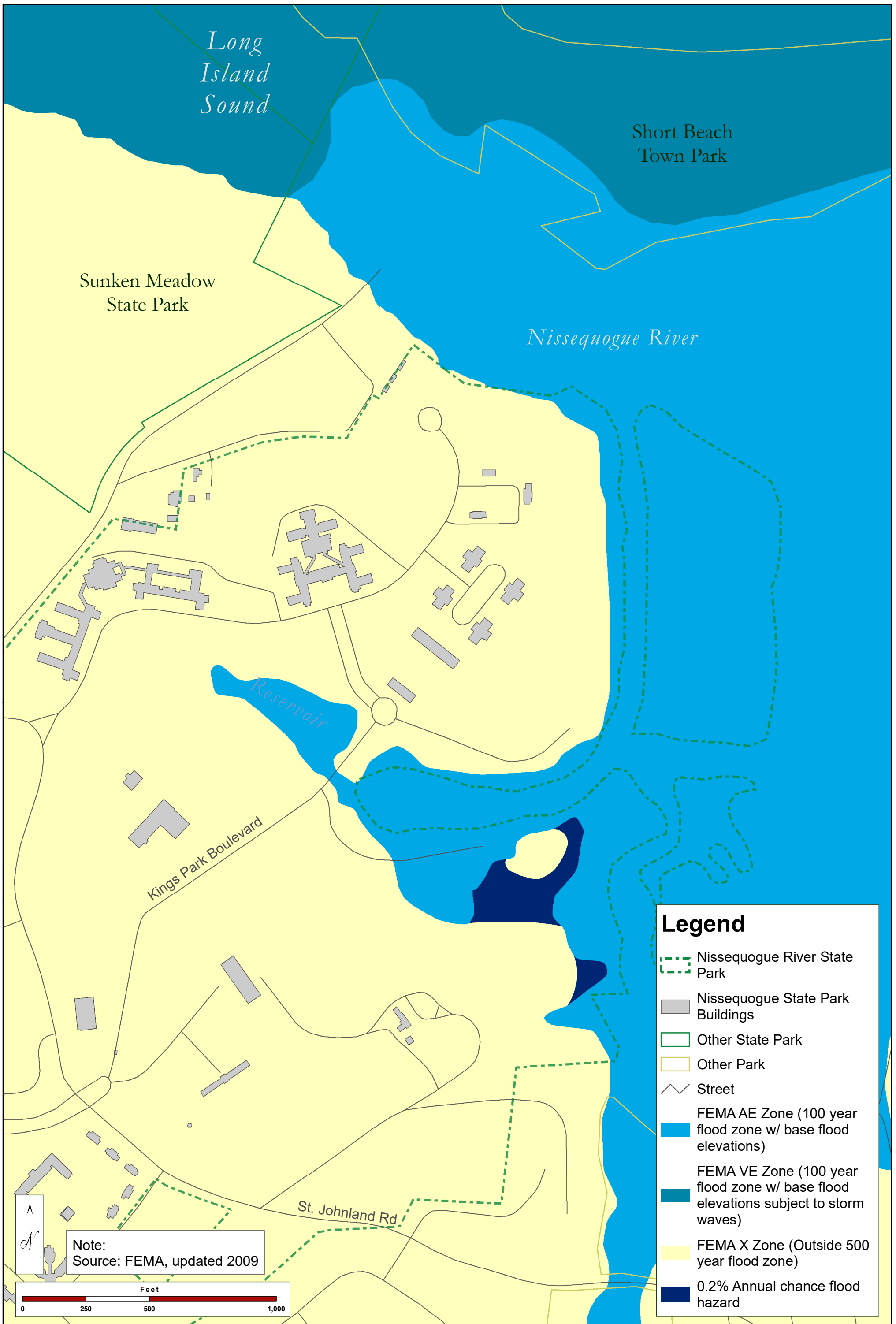


Figure 13 - FEMA Flood Zones



LEGEND

FOREST HABITATS

- Mesophytic Forest
- Successional Mesophytic Forest
- Degraded Area
- Successional Old Field

COASTAL HABITATS

- Freshwater Pond
- Littoral Zone
- Coastal Shoals, Bar and Mudflats
- Intertidal Marsh
- High Salt Marsh

OTHER

- Dredge Soil
- Ashfield
- Open Areas

Figure 14 - Ecological Communities



Legend

- Nissequogue River State Park
- Nissequogue State Park Buildings
- Other Parks
- Low Salt Marsh
- Water
- Tax Parcels
- Street

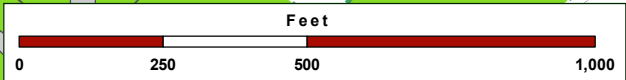


Figure 15 - Significant Ecological Community

Map produced by NYS OPRHP GIS Bureau, September 09, 2021

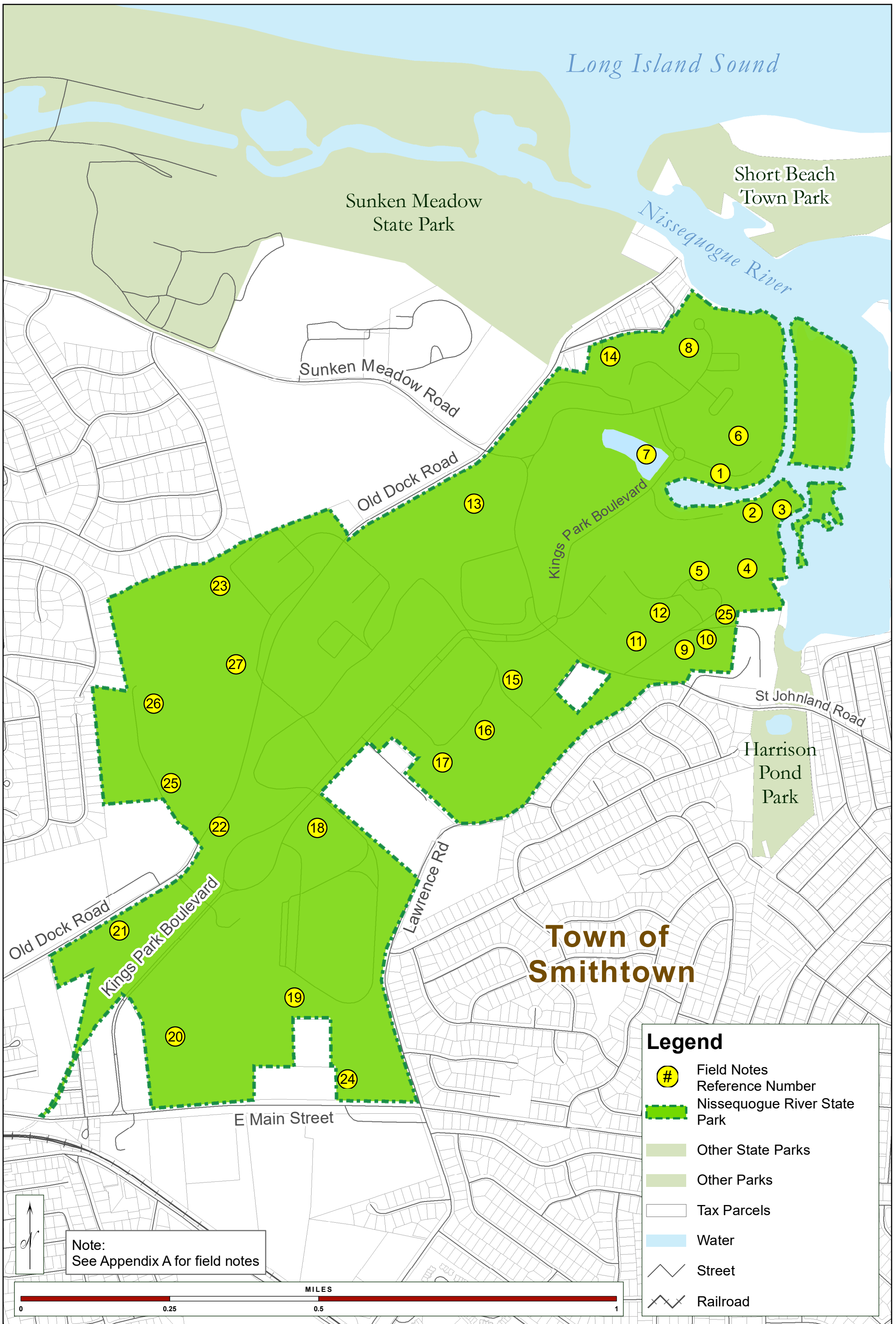


Figure 16 - Ecological Communities Field Notes

Map produced by NYS OPRHP GIS Bureau, September 09, 2021.



LEGEND

- Open Areas
- Woodland
- Former Hospital Building
- Modern Structures
- Water
- Roads

<ul style="list-style-type: none"> 1 OMH JURISDICTION* 3 ADMINISTRATIVE BUILDING 5 OLD LAUNDRY BUILDING 7 MEDICAL AND SURGICAL BUILDING 15 INPATIENT WARD 19 STAFF HOUSING 21 POWER PLANT 22 INPATIENT WARD 29 POWER PLANT 37 STAFF HOUSING 39 INPATIENT WARD 41 GROUP 4 INPATIENT WARD 42 GROUP 4 INPATIENT WARD 	<ul style="list-style-type: none"> 43 GROUP 4 INPATIENT WARD 45 WATER TOWER 53 SEWAGE PUMP HOUSE 62 GARAGE 65 GREENHOUSE 67 SUPERINTENDENT'S HOUSE 68 CARPORT 74 CHIEF ENGINEER'S HOUSE 75 GARAGE FOR BUILDING 74 76 GARAGE FOR BUILDING 74 83 FIREHOUSE 84 WATER WELLS (5) 90 MACY HOME 	<ul style="list-style-type: none"> 91 MACY HOME GARAGE 93 GERIATRIC INFIRMARY 94 NEW LAUNDRY BUILDING 95 STAFF DOCTOR'S COTTAGE #1 96 STAFF DOCTOR'S COTTAGE #2 97 STAFF DOCTOR'S COTTAGE #3 98 STAFF DOCTOR'S COTTAGE #4 99 STAFF DOCTOR'S COTTAGE #5 100 KINGS PARK FIRE DISTRICT 101 KINGS PARK FIRE DISTRICT 125 ADMINISTRATION BUILDING 126 STAFF HOUSING B 127 STAFF HOUSING C 	<ul style="list-style-type: none"> 128 STAFF HOUSING D 129 STAFF HOUSING E 130 STAFF COTTAGE F 132 STAFF COTTAGE H 136 MEDICAL, DIAGNOSTIC BUILDING, AND SURGICAL BUILDING 137 GROUP 3 KITCHEN 138 INPATIENT WARD 139 GROUP 3 KITCHEN AND DINING ROOM 140 CRISIS RESIDENCE 144 HOME T STAFF RESIDENCE 151 OMH JURISDICTION* 152 OMH JURISDICTION*
--	---	---	---

*OMH = NYS OFFICE OF MENTAL HEALTH

Figure 17 - Existing Structures

LEGEND

- 1960s
- 1970s
- 1980s
- 1990s-00s
- 2000-2022
- Existing Buildings

SOURCES: NYS OPRHP, NYS DOT, NYS ITS, Suffolk County GIS, Town of Smithtown, Cashin Associates, P.C., Building Conservation Associates, Inc.



Figure 18 - Buildings Demolished after KPPC's Peak Population (C. 1960) Nissequogue River State Park Master Plan