



West River Shoreline Trail

LANDSCAPE MANAGEMENT PLAN

Grand Island, NY

Public Information Meeting

6:00 pm, Tuesday | July 20th, 2021



**Parks, Recreation
and Historic Preservation**

Purpose of the Meeting

- To share with the public the landscape management plan and sustainable strategies for the West River Shoreline Trail
- To outline the project's philosophy, goals and objectives of the new greenspace



Meeting Agenda

- 1. Introductions**
- 2. Ongoing Projects & Maintenance Operations**
- 3. Philosophy**
- 4. Landscape Management Plan Recommendations**
- 5. Other Initiatives**
- 6. Questions and Comments**



Ongoing Projects and Maintenance Operations

- 1) Parks has over \$200k invested in new equipment
- 2) Site clean-up: unpermitted structure, stair and tree removals
- 3) Drain inlet repairs



Ongoing Projects and Maintenance Operations

3) Parks FORCES Pilot Project: Shoreline Invasive Species Removal and Extensive Invasive Species Inventory Report



Project Philosophy

- Rich and varied landscapes bring people joy. They represent the web of life, in a balanced ecosystem of soil, plants, water, air and light. With this in mind, landscapes cannot be seen solely as an object to be manipulated into static artificiality.
- Our goal is to enhance the ecology and landscape quality of the Trail and Shoreline and create a natural and interesting landscape while preserving scenic viewsheds.



Project Philosophy

- This philosophy and goal motivate us to create a transition in select areas from mowed lawn to managed grassland.
- **20% will be managed as high-mow which is periodically mowed to 5"-8" when growth reaches 24" max. height and 80% will be managed as mowed lawn/low-mow is mowed more frequently to 3", when growth reaches 6" max. height.**



Project Philosophy

- **Trees are fundamental to park landscapes because they add visual interest and dimension. They are an indispensable kingpin in landscape ecology while inspiring a sense of awe, and physical comfort.**
- **Canopy species will have a significant presence in some areas of the trail and set an example for the future**
- **Flowering native trees are planned along the fringes of existing shrub and tree masses.**



Project Philosophy









- Trail signs, portable toilets, trash and dog waste receptacles are installed and maintained by Parks at overlooks, parking areas, trail termini, and certain road and trail intersections.



Overall Amenities Map



LEGEND:

-  WEST RIVER SHORELINE TRAIL
-  EXISTING MULTI-USE TRAIL
-  NEW YORK STATE PARK
-  EXISTING OVERLOOK LOCATION
-  EXISTING PADDLE CRAFT LAUNCH
-  DUCK BLIND LOCATION
-  PORTABLE TOILET LOCATION
-  SEASONAL RESTROOM

Landscape Management Plan



**Parks, Recreation
and Historic Preservation**

West River Parkway: Landscape Management Plan

Key Recommendations



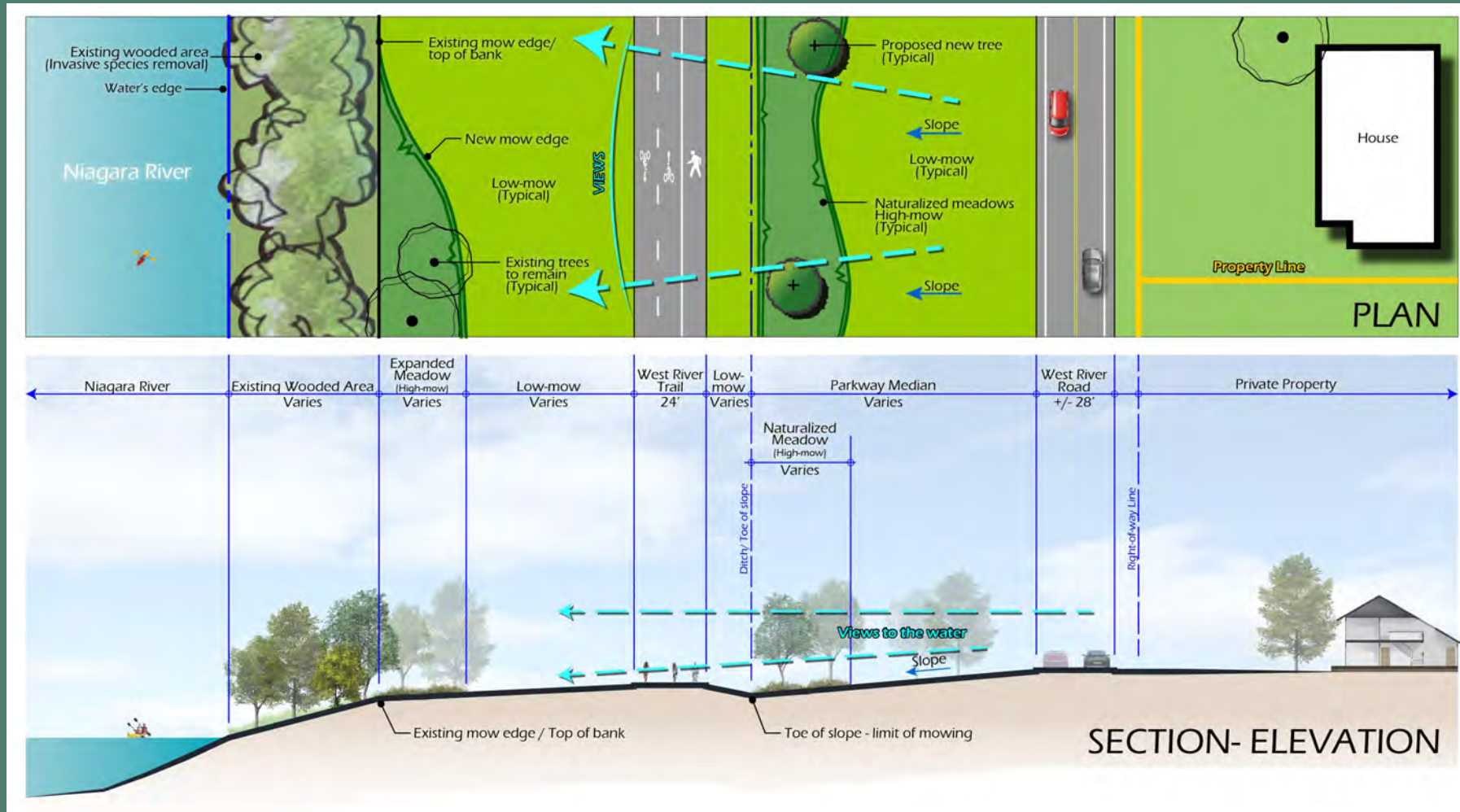
- 1) Be sensitive to viewsheds towards the water
- 2) Allow regeneration of native vegetation along the shoreline and integrate invasive species management within the existing wooded areas
- 3) Enhance gateway connections into the Trail
- 4) Create high-mow areas around existing tree groupings to simplify mowing and to avoid mower damage to trees

Key Recommendations

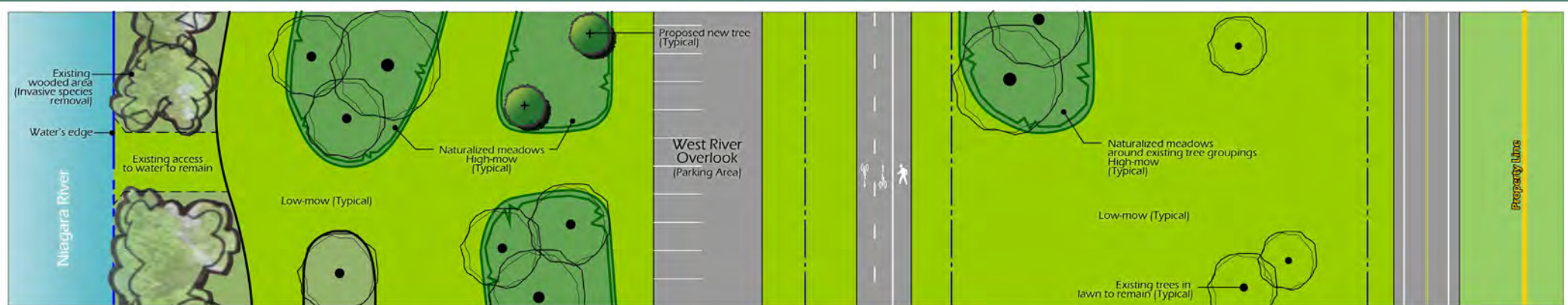


- 5) Provide a defined undulating/contoured mow edge that enhances the natural landscape
- 6) Where appropriate, provide mowed paths through hi mow areas
- 7) Preserve and maintain existing ditches and drainage features
- 8) Provide (4) locations for portable toilets (two year-round & 2 seasonal) and additional site furnishing

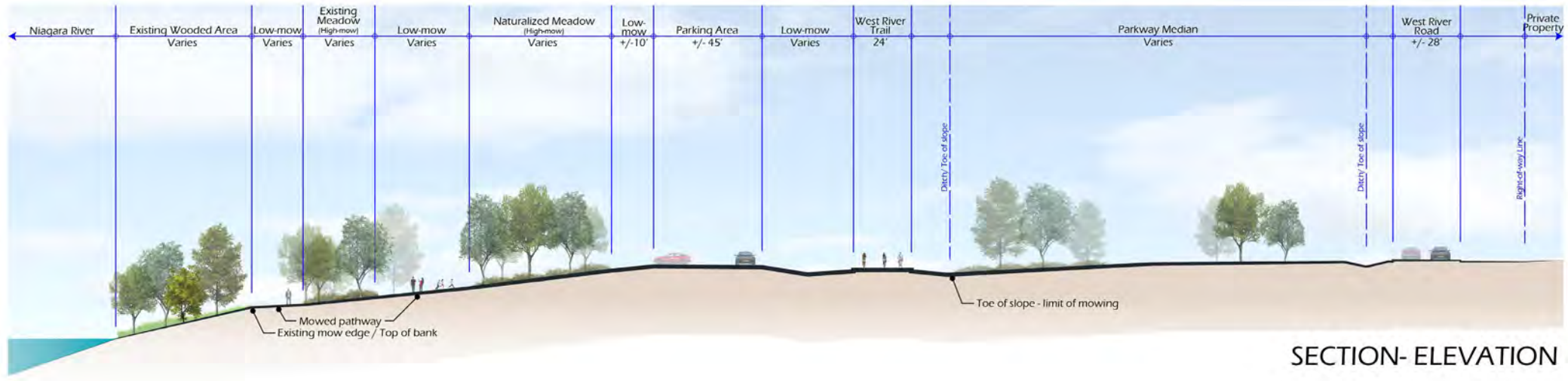
Typical Plans & Section-Elevations



Typical Plans & Section-Elevations



PLAN



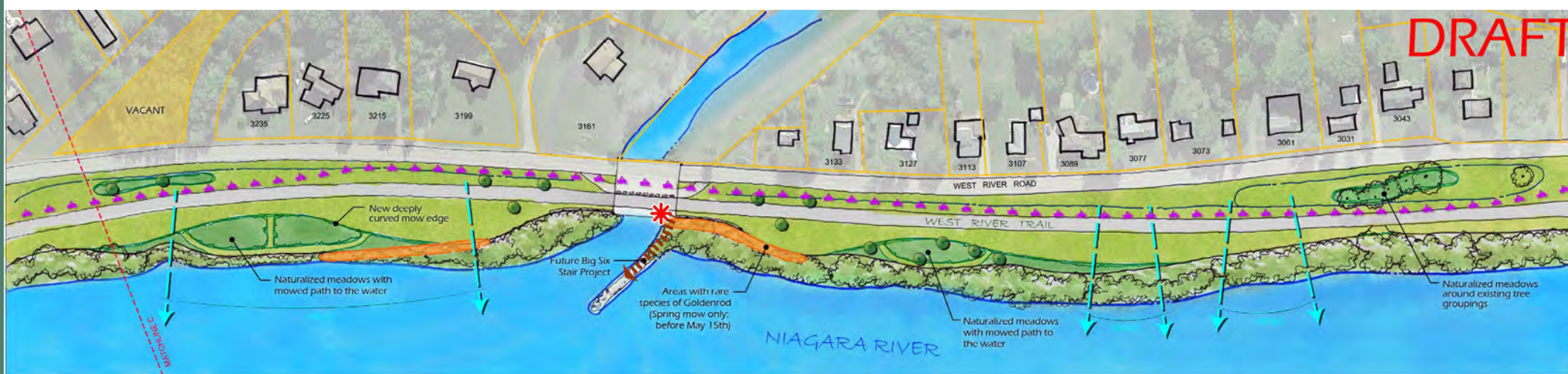
SECTION- ELEVATION



Key Plan & Legend



- Existing Tree
- Existing Wooded Area (Invasive species removal)
- Existing Ditch
- Water's edge
- Maintained viewsheds
- Snowmobile Trail
- Proposed Tree
- Low-mow (4"-6" high max)
- High-mow (18"-24" high max)
- Enhanced Gateway
- Portable Toilets
- Potential Site Furnishing



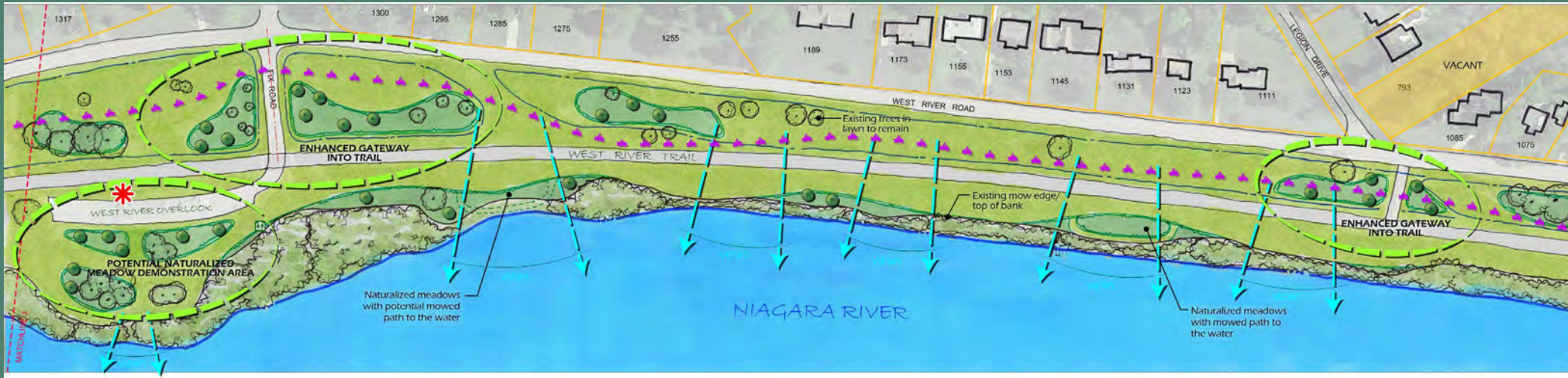
**Parks, Recreation
and Historic Preservation**

West River Parkway: Landscape Management Plan

Key Plan & Legend



- Existing Tree
- Existing Wooded Area (Invasive species removal)
- Existing Ditch
- Water's edge
- Maintained viewsheds
- Snowmobile Trail
- Proposed Tree
- Low-mow (4"-6" high max)
- High-mow (18"-24" high max)
- Enhanced Gateway
- Portable Toilets
- Potential Site Furnishing



Parks, Recreation and Historic Preservation

West River Parkway: Landscape Management Plan

Original Renderings

Before

After



**Parks, Recreation
and Historic Preservation**

West River Parkway: Landscape Management Plan

Original Renderings



**Parks, Recreation
and Historic Preservation**

West River Parkway: Landscape Management Plan

NYS Parks Mission Statement



The mission of the Office of Parks, Recreation and Historic Preservation is to provide safe and enjoyable recreational and interpretive opportunities for all New York State residents and visitors and to be responsible stewards of our valuable natural, historic and cultural resources.




**Parks, Recreation
and Historic Preservation**

West River Parkway: Landscape Management Plan

Reduced Mowing: A new NYS Parks Standard Operating Procedure

- NY State Parks has developed a Reduced Mowing Standard Operating Procedure
- Required for all State Parks to document, address, and sustain the reduction of mowing

 NEW YORK STATE OF OPPORTUNITY	Parks, Recreation and Historic Preservation	Section: Operations Standard Operating Procedure Title: Reduced Mowing
--	--	--

Summary
This document addresses the reduction of mowing and lawn maintenance in OPRHP facilities. Reduced mowing results in a variety of operational and ecological benefits. All facilities are required to maintain an approvable plan that documents, addresses, and sustains the reduction of mowing at the facility.

Standard Operating Procedure

- Facility Managers shall identify locations where mowing frequency can be partially or completely reduced. Considerations for choosing locations include but are not limited to: public use, safety and operational concerns, invasive species, and ecologically sensitive areas.
- These locations and the new frequency of mowing or other management practices shall be documented in a reduced mowing approvable plan.
 - The plan shall be developed in consultation with appropriate staff, including the Regional Biologist, Stewardship Specialist, Landscape Architect, or equivalent.
 - The plan shall include a map outlining the areas that will be incorporated into the reduced mowing program.
 - The plan shall outline a method to track acres reduced per year compared to past lawn maintenance and calculate cost savings.
- The plan must be signed by the Facility Manager and approved by the Regional Director or their designee.
- Appropriate maintenance and operations staff shall have access to the mowing schedule and shall be oriented by the Facility Manager or their qualified designee on how to implement the mowing plan.

Background
Mowing of lawns is a common practice to provide accessible areas for patrons to recreate and to cultivate park-like aesthetics. However, mowing often occurs in areas that are infrequently utilized by visitors, resulting in avoidable labor and equipment costs. By decreasing the frequency of mowing from once a week to once a month, once a year, or less, a reduced mowing program provides substantial benefits with respect to operations, sustainability, and the conservation and interpretation of the natural environment. Some areas can be managed as a natural meadow and others may be allowed to return to a shrubland or forest.

Example
In the Saratoga-Capital Region, stewardship staff coordinated with park and operations staff to implement a reduced mowing program in 2008, managing instead for natural meadow habitat. By changing mowing schedules at selected sites from once a week to once a year or less, as of 2020 the program has resulted in:

- approximately 3,000 acres of less mowing each year

High Mow vs Low Mow: The Benefits of Reduced Mowing

Reduced Mowing:

- 1) Saves energy and reduces CO₂ emissions by not using mowers and equipment
- 2) Decreases shoreline erosion and increases the stabilization
- 3) Reduces pollution and stormwater runoff from entering our streams and lakes
- 4) Increases recreational opportunities for wildlife viewing
- 5) Increases habitat for pollinators, birds, and other wildlife
- 6) Encourages the growth and diversity of native plants



Gorgeview Photos- Aerial

Before



After



**Parks, Recreation
and Historic Preservation**

West River Parkway: Landscape Management Plan

Gorgeview Photos- Street Level



**Parks, Recreation
and Historic Preservation**

West River Parkway: Landscape Management Plan

Shoreline Invasives Species Removal

- **Past program needed a major overhaul**
- **This is not allowed anywhere else in the State**
- **Restoration is equally as important as removal**
- **Parks is actively looking at different options for a revised program**
- **It didn't develop overnight and it won't be resolved overnight; it will require a long term commitment**



Plant Palette



Acer x freemanii 'Jeffersred'
Autumn Blaze Maple



Acer rubrum 'October Glory'
October Glory Red Maple



Amelanchier x grandiflora
'Autumn Brilliance'
Autumn Brilliance Serviceberry



Celtis occidentalis
Hackberry



Cercis canadensis
Eastern Redbud



Crataegus crusgalli inermis
Thornless Cockspur Hawthorn



Gleditsia triacanthos inermis
'Skyline'
Skyline Honeylocust



Liriodendron tulipifera
Tuliptree



Malus 'Prairiefire'
Prairiefire Crabapple



Malus 'Profusion'
Profusion Crabapple



Malus x 'Robinson'
Robinson Crabapple



Platanus x acerifolia
'Bloodgood'
London Planetree



Prunus sargentii
Sargent Cherry



Prunus serotina
Black Cherry



Quercus palustris
Pin Oak



Quercus rubra
Red Oak



Tilia americana
American Basswood



Ulmus americana 'Princeton'
Princeton Elm



Ulmus x 'Accolade'
Accolade Elm



Ulmus x 'Triumph'
Triumph Elm

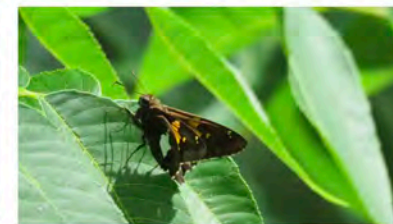
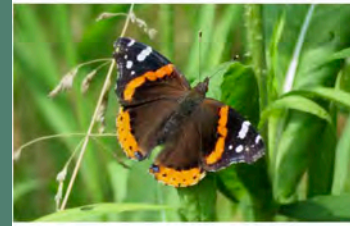
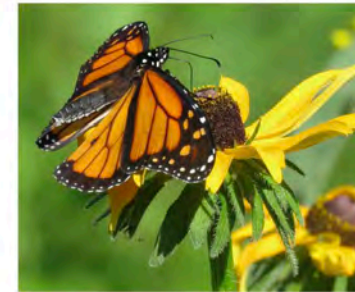
Other Initiatives



PCA- Pollinator Conservation Area



Ohio Street 2020



PCA- Pollinator Conservation Area



Ohio St. First Year Establishment



12-01-2018



07-01-2019



08-01-2019



08-23-2019



ABOVE: West River Parkway January 2021

BELOW: West River Parkway July 2021



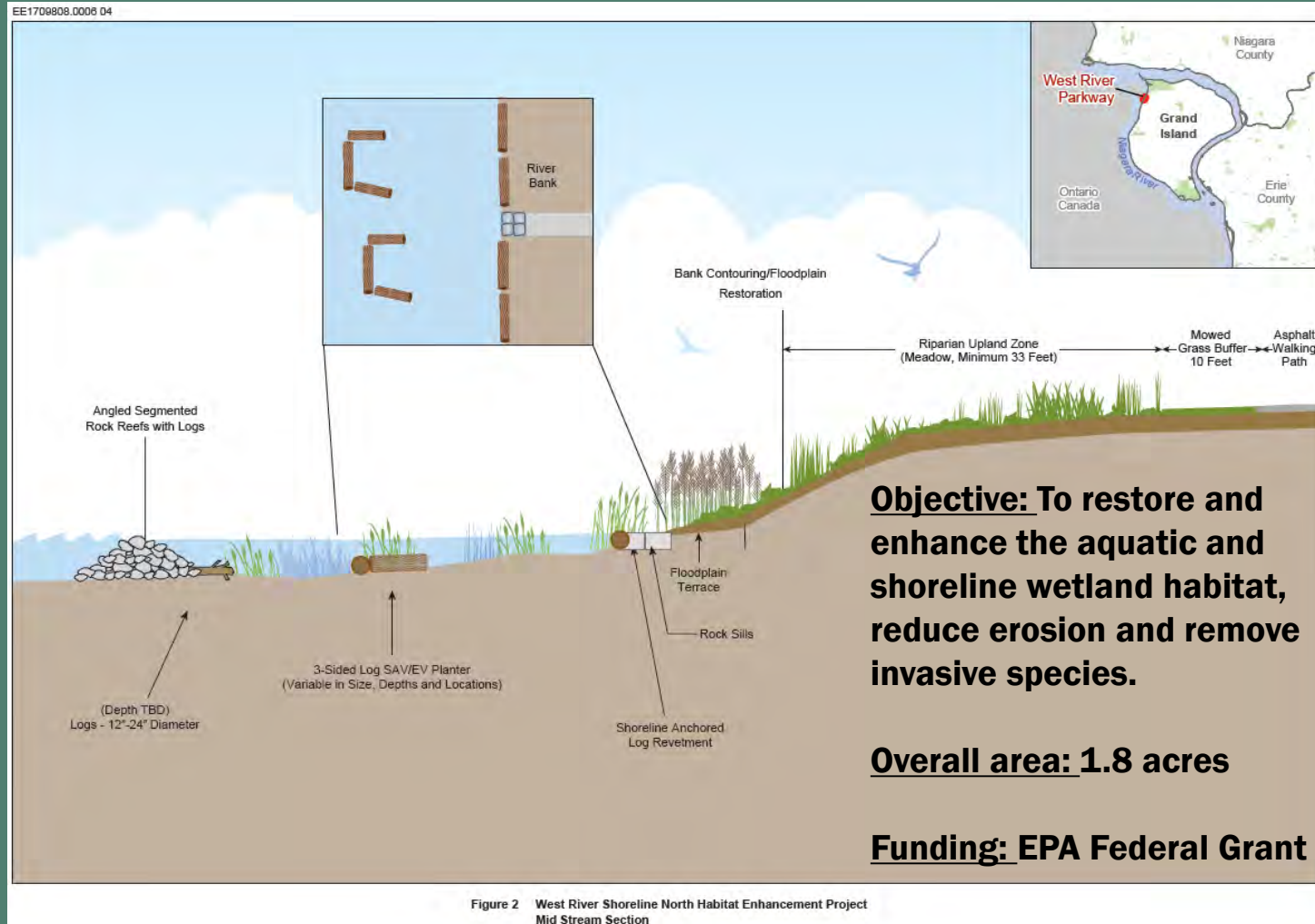
Big Six Marina Phase 2 Improvements



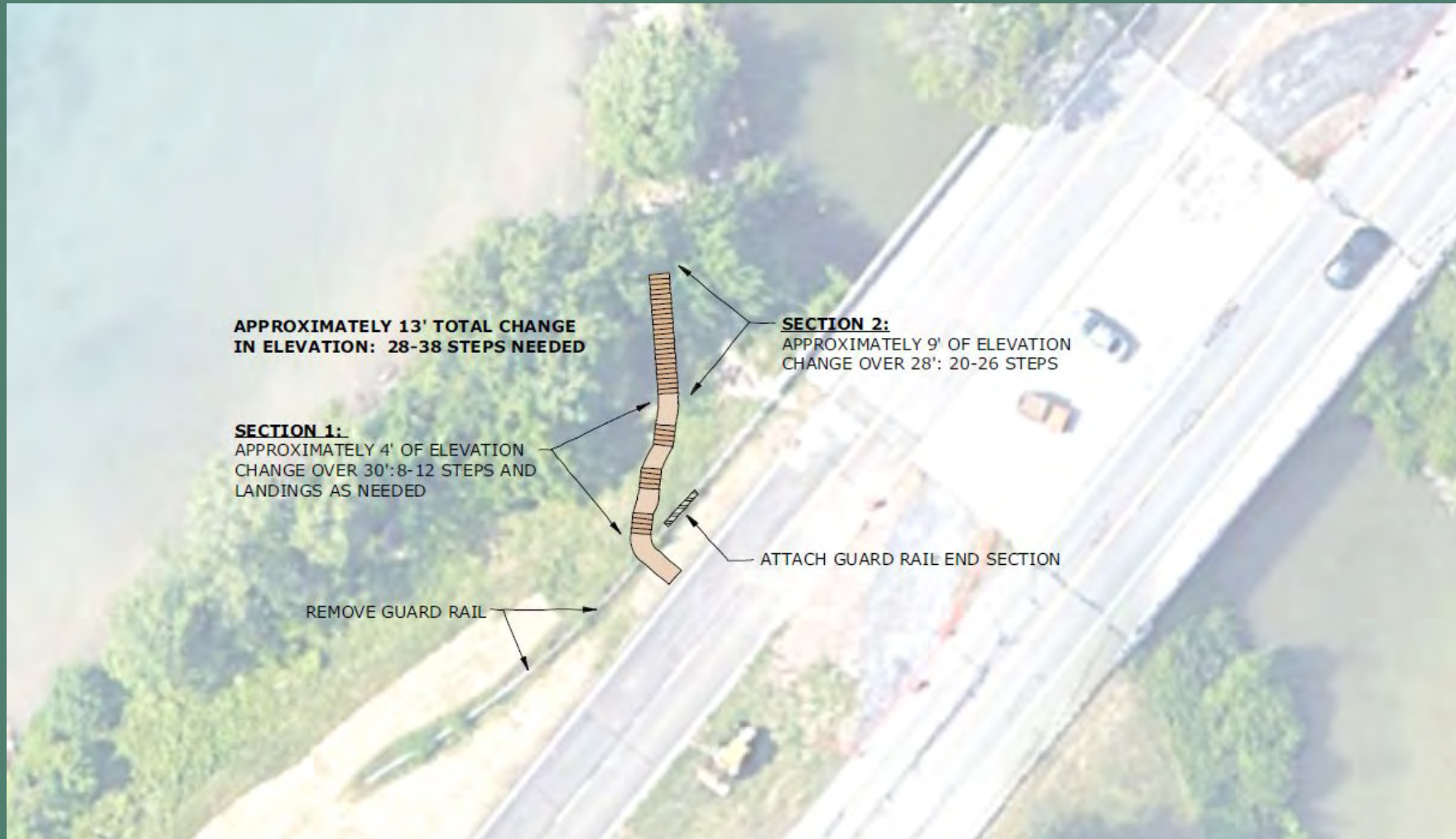
**Parks, Recreation
and Historic Preservation**

West River Parkway: Landscape Management Plan

West River Shoreline Habitat Enhancement



Big Six Steps



**Fill out form or send any additional
questions or comments to:**

Angela.berti@parks.ny.gov



Meeting Etiquette

- 1. Speak slowly and clearly and state your name and address**
- 2. Be respectful to others and refrain from disruptions during the meeting**
- 3. Please be patient- everyone will get a chance to speak.**
- 4. Please be brief, keeping comments to two minutes or less**
- 5. Keep comments constructive.**
- 6. Avoid verbal response about the discussion (i.e., booing or applauding).**
- 7. Please silence all cellular phones or other noise making devices.**





Questions and Comments



**Parks, Recreation
and Historic Preservation**