

Bowman Lake State Park

745 Bliven Sherman Road, Oxford, NY 13830

- Legend**
- Basketball Court
 - Bathhouse
 - Boat Dock
 - Boat Launch (Cartop)
 - Campsites
 - Concession Stand
 - Contact Station
 - Disc Golf
 - Dumpster/Recycling
 - First Aid
 - Handicap Accessible
 - Maintenance Area
 - Nature Center
 - Parking Area
 - Park Office
 - Picnic Area
 - Picnic Pavilion
 - Playground
 - Public Restroom
 - Swimming
 - Telephone
 - Trailer Dumping Station
 - Trailhead
 - Volleyball Court
 - Roads
 - Trail color varies
 - Unmarked Trail
 - Unpaved Road
 - Streams
 - Bowman Lake State Park
 - DEC Land
 - Wetlands

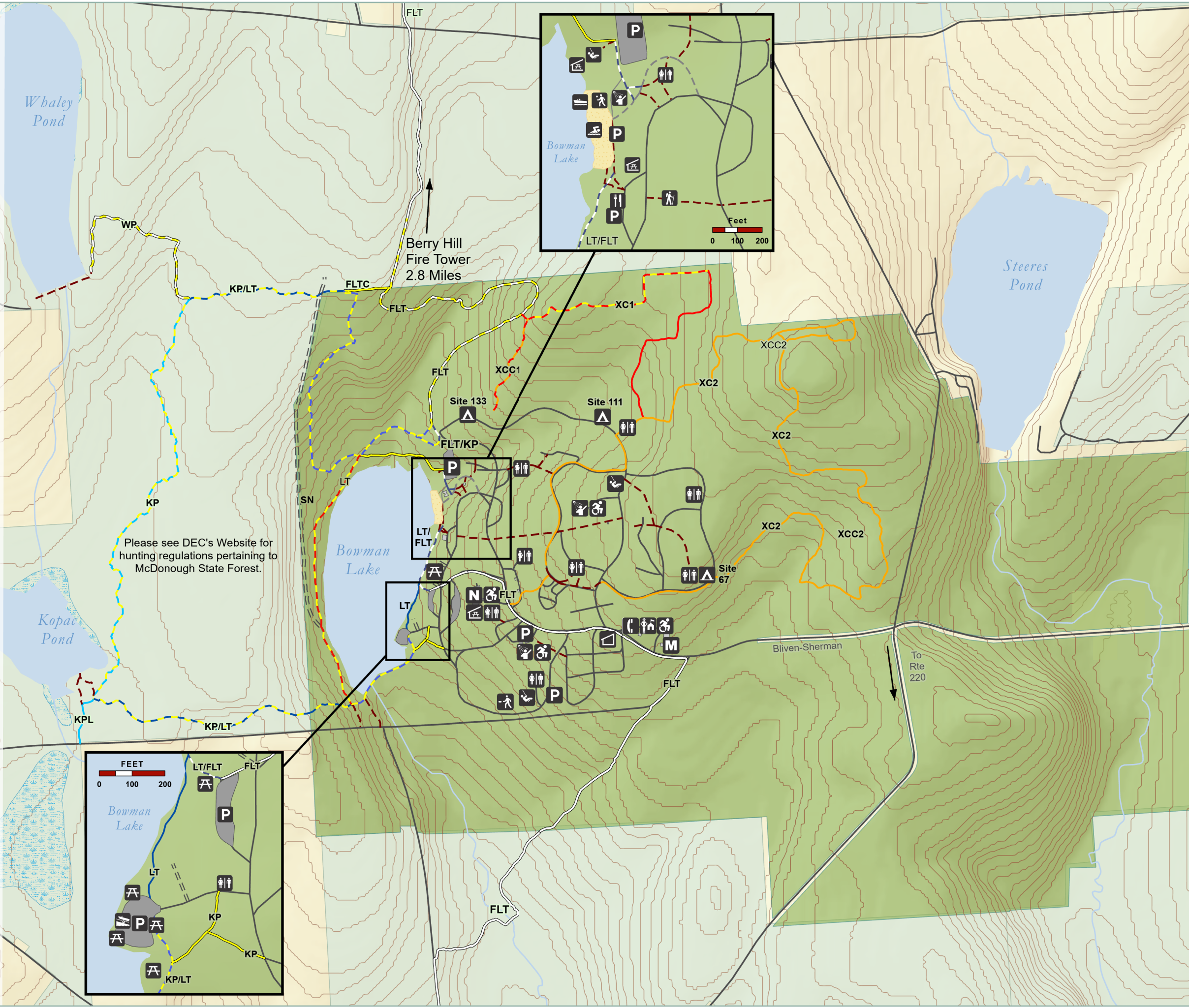
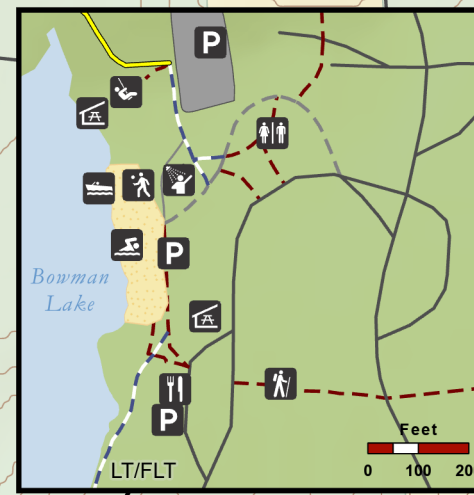
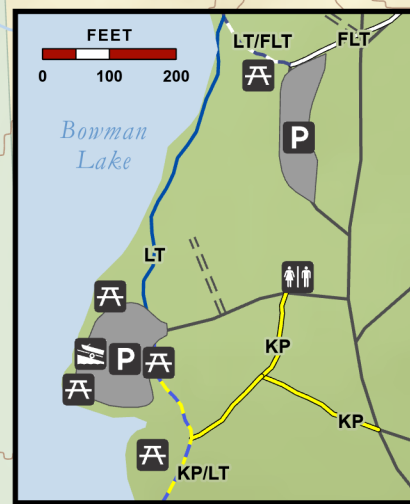
ID	Trail Name	Blaze	Mileage
FLTC	Finger Lakes Trail Connector	Yellow	0.08
FLT	Finger Lakes Trail	White	3.3
KPL	Kopac Pond Loop	Lt Blue	0.9
KP	Kopac	Yellow	3.59
LT	Lake Trail	Red/Yellow/Blue	0.4
SN	Snowmobile Trail	---	0.65
WP	Whaley's Pond	Yellow/White	0.4
XC1	XC Trail 1	Red	1.13
XC2	XC Trail 2	Orange	2.48



Please be considerate of other park users.
Please report any accident or incident immediately to park police.
All boundaries and trails are shown as approximate.
Be aware of changing trail conditions.

Park Office: (607) 334-2718
Central Regional Office: (315) 492-1756
State Park Police: (315) 462-6422
In Case of Emergency: **911**

Map produced by NYSOPRHP GIS Bureau, April 10, 2024.



Please see DEC's Website for hunting regulations pertaining to McDonough State Forest.

Bliven-Sherman
To Rte 220

