

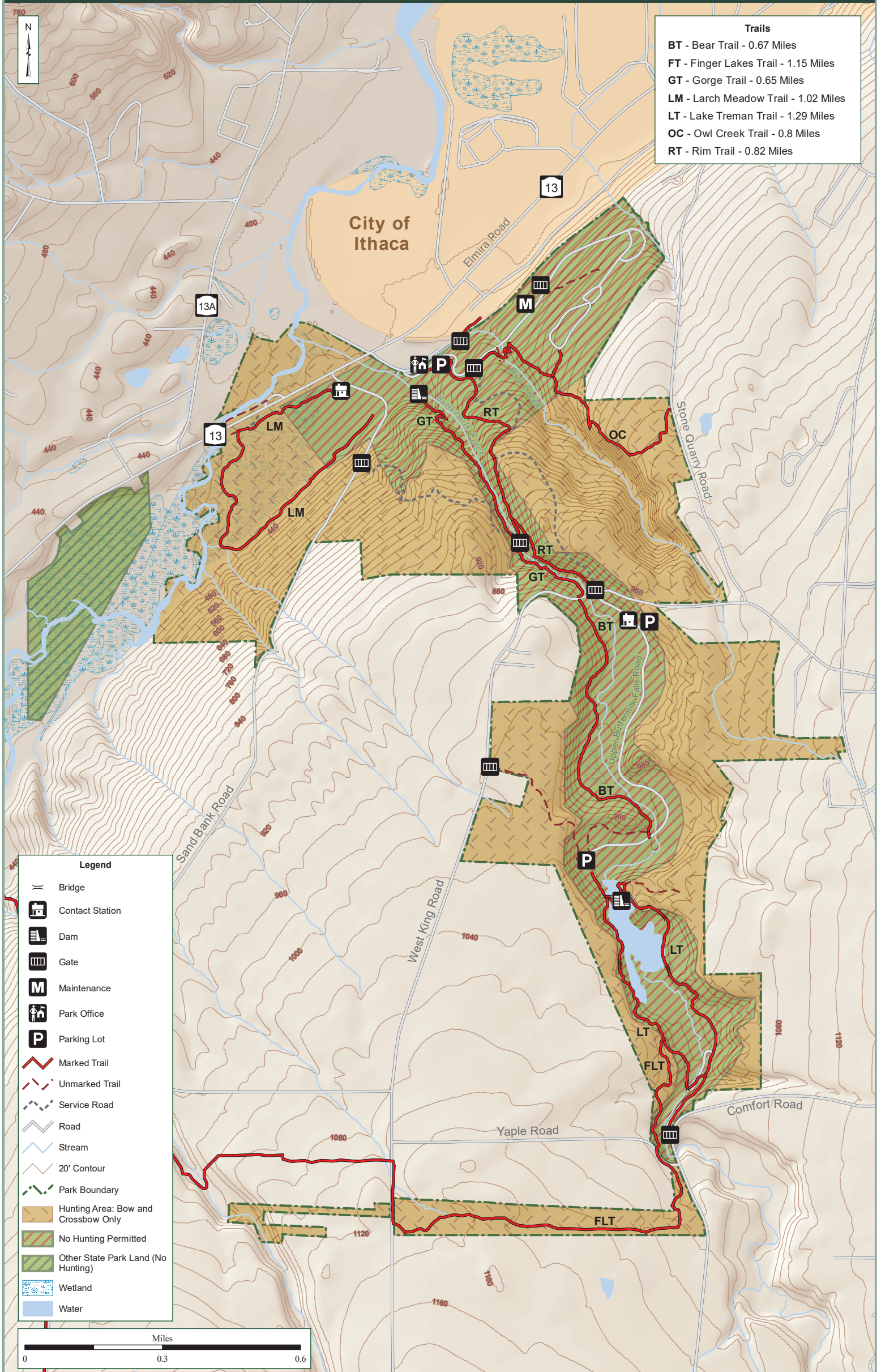
Buttermilk Fall State Park Hunting Area

Park Office: (607) 273-5761
 Regional Office: (607) 387-7041
 State Park Police: (315) 492-6422
 In Case of Emergency: 911



Parks, Recreation
and Historic
Preservation

Map produced by NYSOPRHP GIS Bureau, September 15, 2020.



Trails	
BT	- Bear Trail - 0.67 Miles
FT	- Finger Lakes Trail - 1.15 Miles
GT	- Gorge Trail - 0.65 Miles
LM	- Larch Meadow Trail - 1.02 Miles
LT	- Lake Treman Trail - 1.29 Miles
OC	- Owl Creek Trail - 0.8 Miles
RT	- Rim Trail - 0.82 Miles

Legend	
	Bridge
	Contact Station
	Dam
	Gate
	Maintenance
	Park Office
	Parking Lot
	Marked Trail
	Unmarked Trail
	Service Road
	Road
	Stream
	20' Contour
	Park Boundary
	Hunting Area: Bow and Crossbow Only
	No Hunting Permitted
	Other State Park Land (No Hunting)
	Wetland
	Water

