

Harriet Hollister Spencer State Park

6775 Canadice Hill Road
Springwater, NY 14560

Park Office: (585) 335-8111
Regional Office: (607) 387-7041
Park Police: (800) 255-3577
In Case of Emergency: 911



New York State
Parks, Recreation and
Historic Preservation

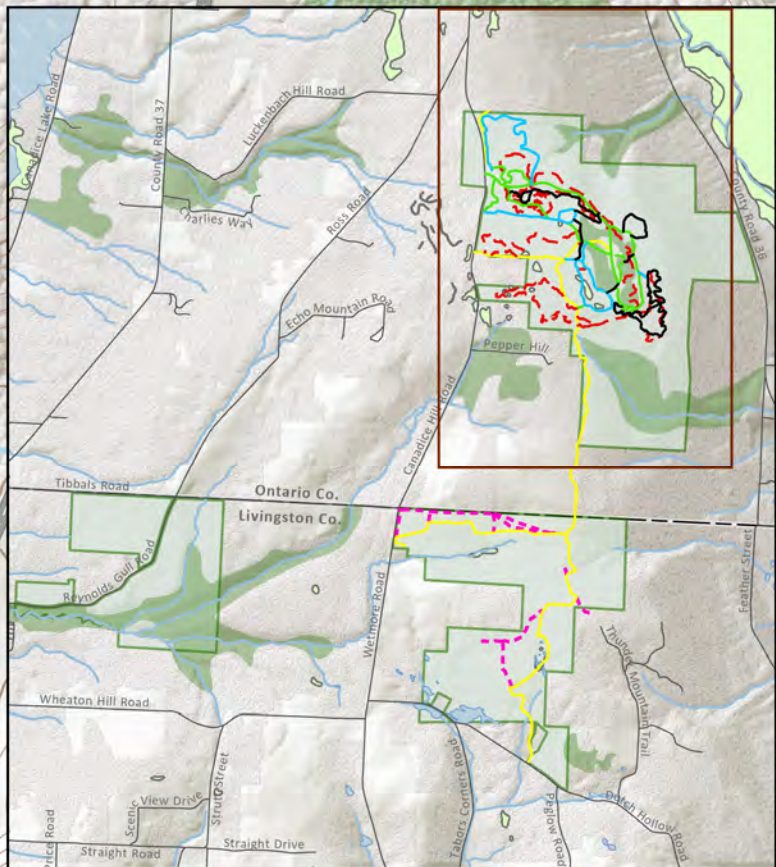
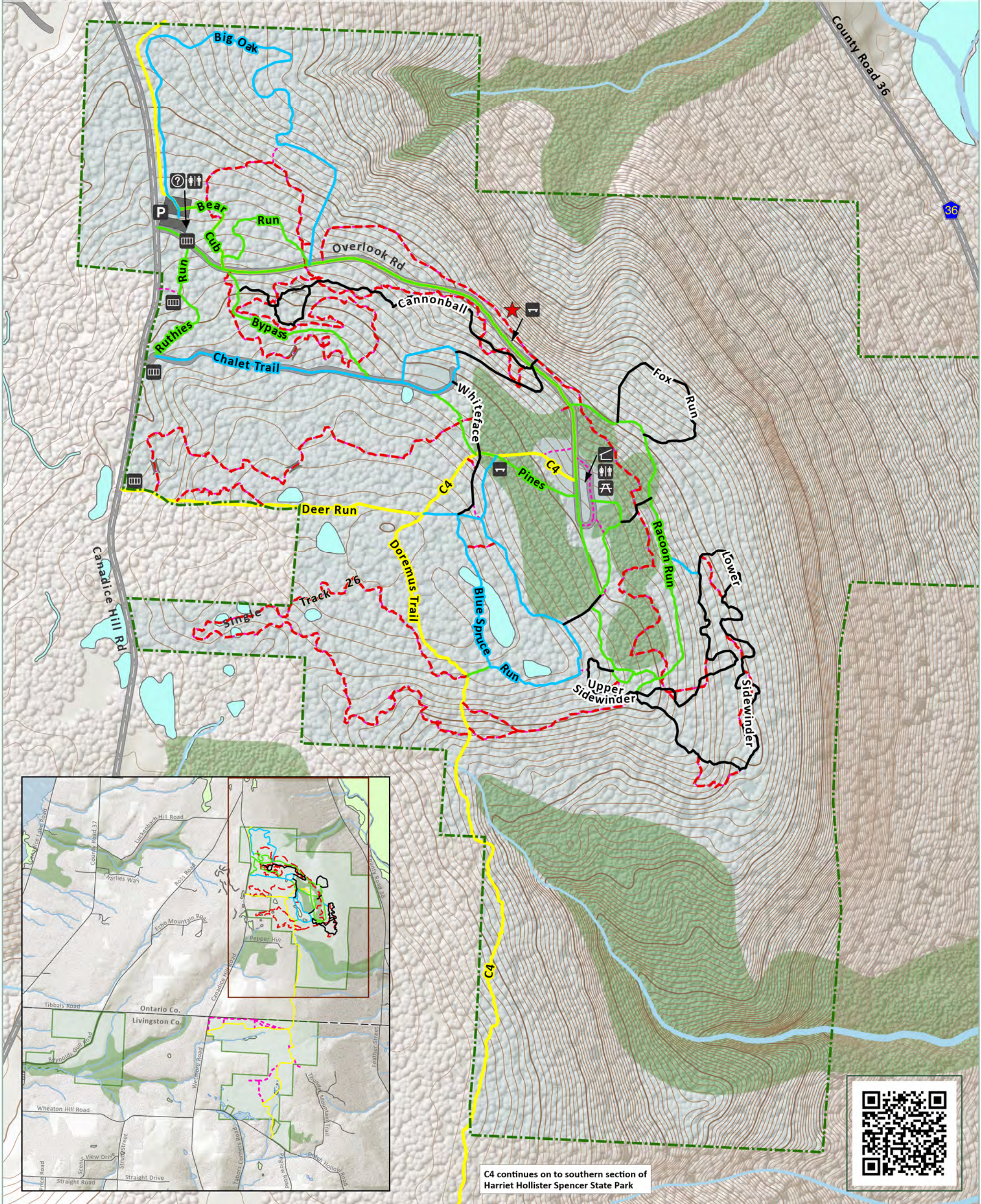
- | | | | | | |
|--|--------------|--|-------------------|--|--------------------------------------|
| | Bench | | Public Restroom | | Harriet Hollister Spencer State Park |
| | Bridge | | Scenic View | | Snowshoe Trail |
| | Gate | | Shelter | | Unmarked Trails |
| | Information | | Snowmobile Trails | | Roads |
| | Parking Area | | | | |
| | Picnic Site | | | | |

- Ski Trail Rating**
- Easy
 - Moderate
 - Difficult

Please be considerate of other park users.
Please report any accident or incident
immediately to park police.
All boundaries and trails are shown as approximate.
Be aware of changing trail conditions.



Map produced by NYSOPRHP GIS Bureau, July 11, 2023.



C4 continues on to southern section of
Harriet Hollister Spencer State Park