

See Sheet 3 ↑

See Sheet 1 ↓

BLACK DIAMOND TRAIL ON EXISTING ASPHALT TRAIL IN CASS PARK BETWEEN STATE STREET BRIDGE AND PROPOSED TRAILHEAD IN CASS PARK.

TRAIL ON WEST SIDE OF FLOOD CONTROL CHANNEL FROM CECIL A. MALONE TRAIL BRIDGE TO EXISTING TRAIL AT STATE STREET BRIDGE.

TRAIL BRIDGE (300 LF +/-) ACROSS FLOOD CONTROL CHANNEL AT CECIL A. MALONE DRIVE.

TRAIL BRIDGE (120 OR 200 LF DEPENDING ON PROXIMITY TO RAILROAD BRIDGE) WITH NEW ABUTMENTS BEHIND EXISTING RETAINING WALLS.

FISH LADDER INTERPRETIVE SITE.

TRAIL ON ABANDONED RAIL CORRIDOR ALONG EAST EDGE OF NORFOLK SOUTHERN RAILROAD.

TRAIL BRIDGE OVER CAYUGA INLET. 120 LF.

TRAIL ON RAILROAD GRADE.

TRAIL IN MEADOW BETWEEN BUTTERMILK CREEK BRIDGE AND RAILROAD GRADE.

TRAIL BRIDGE OVER BUTTERMILK CREEK.

TRAIL ALONG SHOULDER OF ROUTE 13.

EMERGENCY ACCESS AT NYSDEC FISHING ACCESS SITE.

INTERPRETIVE SITE - COREOGONEL AND MANMADE WETLAND.

TRAIL PASSES UNDER ROUTE 13 BRIDGE ON NORTH SIDE OF THE CAYUGA INLET TO NYSDEC FISHING ACCESS PARKING AREA.

LINKAGE TO PROPOSED CAYUGA WATERFRONT TRAIL AND INLET ISLAND PROMENADE.

LINKAGE TO CECIL A. MALONE BIKEWAY AND CITY CENTER.

TRAIL ON EAST EDGE OF FLOOD CONTROL CHANNEL BETWEEN FISH LADDER AND CECIL A. MALONE DRIVE.

TRAILHEAD FOR NATURAL AREA BY CITY OF ITHACA.

Southwest Natural Area (City of Ithaca).

POSSIBLE ALTERNATE TRAIL ROUTE (3000 LF) FOLLOWS SOUTH OF INLET AND EAST OF FLOOD LEVEL.

OLD RAILROAD GRADE.

GATEWAY BRIDGE OVER NY ROUTE 13 TO BE CONSTRUCTED BY CITY OF ITHACA. CITY TO CONSTRUCT SPUR TRAIL FROM BLACK DIAMOND TRAIL TO GATEWAY BRIDGE ON OLD RAILROAD GRADE.

LINKAGE TO SOUTH HILL RECREATION WAY VIA OLD RAILROAD GRADE.

SPUR TRAIL CROSSES BUTTERMILK CREEK ON EXISTING BRIDGE AND CROSSES ENTRY ROAD THROUGH EXISTING CURBED MEDIAN ISLAND.

TRAIL HEAD AT SAND BANK ROAD PARKING LOT. KIOSK WITH PARK AND TRAIL INFORMATION. SEE ENLARGEMENT.

BUTTERMILK FALLS TRAIL SPUR (2900 LF +/-) TRAIL ON LARCHMEADOW TRAIL TO FALLS SWIMMING AREA.

BLACK DIAMOND TRAIL
MASTER PLAN
FIGURE MP-2
2007

Buttermilk Falls State Park to Allan H. Treman State Marina Park

- Legend**
- Black Diamond Trail Alignment
 - Black Diamond Trail Spurs
 - Finger Lakes Trail
 - Bridge/Creek Crossing
 - Road Crossing
 - Black Diamond Trail Stations
 - Trailheads
 - Emergency Access
 - Kiosk
 - Interpretive Site
 - Seating Area
 - Areas of Enlargement
 - Buildings (1992)
 - Municipal Boundaries
 - Rail Road
 - NYS Parks Lands
 - Property to be Acquired
 - Other Public Lands
 - Forested Areas
 - Taxparcels

References:
Tompkins County GIS Program
Digital Planimetric Series
2006 Tax Parcels

NYS Office of Parks, Recreation, & Historic Preservation
Finger Lakes Region
Trumansburg, N.Y. 14886

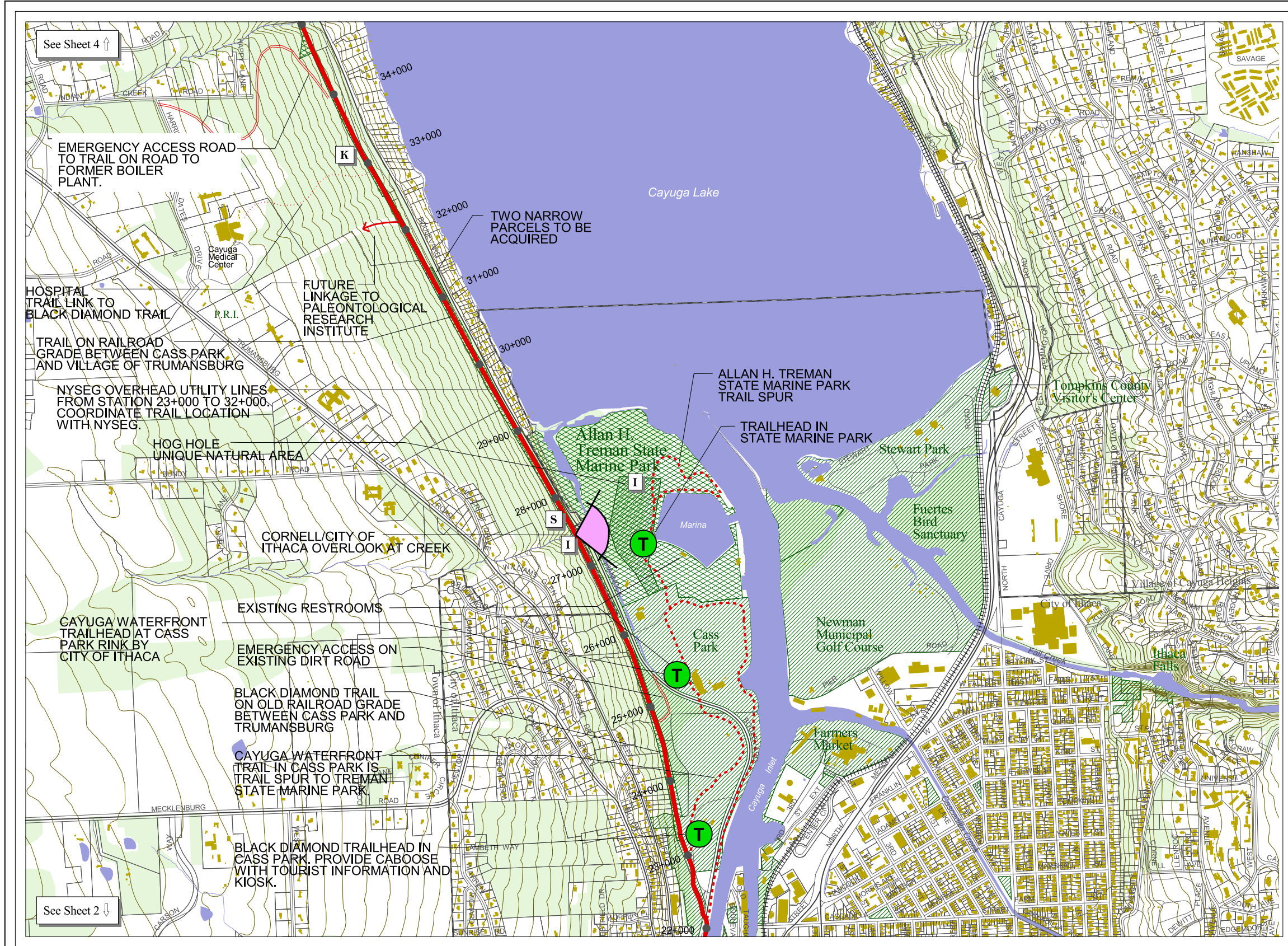
Consultants
Larsen Engineers
Northeast Greenways
Greg Potter

North arrow pointing up.

New York State Plane
Central Projection
1983 North American Datum

1:6500

Scale bar: 0, 300, 600 Feet
0, 60, 120 Meters



See Sheet 4 ↑

EMERGENCY ACCESS ROAD TO TRAIL ON ROAD TO FORMER BOILER PLANT.

TWO NARROW PARCELS TO BE ACQUIRED

HOSPITAL TRAIL LINK TO BLACK DIAMOND TRAIL

FUTURE LINKAGE TO PALEONTOLOGICAL RESEARCH INSTITUTE

TRAIL ON RAILROAD GRADE BETWEEN CASS PARK AND VILLAGE OF TRUMANSBURG

NYSEG OVERHEAD UTILITY LINES FROM STATION 23+000 TO 32+000. COORDINATE TRAIL LOCATION WITH NYSEG.

HOG HOLE UNIQUE NATURAL AREA

CORNELL/CITY OF ITHACA OVERLOOK AT CREEK

CAYUGA WATERFRONT TRAILHEAD AT CASS PARK RINK BY CITY OF ITHACA

EXISTING RESTROOMS

EMERGENCY ACCESS ON EXISTING DIRT ROAD

BLACK DIAMOND TRAIL ON OLD RAILROAD GRADE BETWEEN CASS PARK AND TRUMANSBURG

CAYUGA WATERFRONT TRAIL IN CASS PARK IS TRAIL SPUR TO TREMAN STATE MARINE PARK

BLACK DIAMOND TRAILHEAD IN CASS PARK. PROVIDE CABOOSE WITH TOURIST INFORMATION AND KIOSK.

See Sheet 2 ↓



MASTER PLAN

FIGURE MP-3
2007

Allan H. Treman State Marina Park to Taughannock Falls State Park

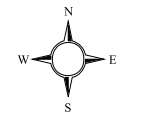
Legend

- Black Diamond Trail Alignment
- Black Diamond Trail Spurs
- Finger Lakes Trail
- Bridge/Creek Crossing
- Road Crossing
- Black Diamond Trail Stations
- Trailheads
- Emergency Access
- Kiosk
- Interpretive Site
- Seating Area
- Areas of Enlargement
- Buildings (1992)
- Municipal Boundaries
- Rail Road
- NYS Parks Lands
- Property to be Acquired
- Other Public Lands
- Forested Areas
- Taxparcels

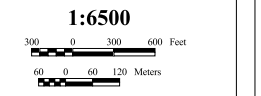
References:
Tompkins County GIS Program
Digital Planimetric Series
2006 Tax Parcels

NYS Office of Parks,
Recreation, & Historic Preservation
Finger Lakes Region
Trumansburg, N.Y. 14886

Consultants
Larsen Engineers
Northeast Greenways
Greg Potter



New York State Plane
Central Projection
1983 North American Datum



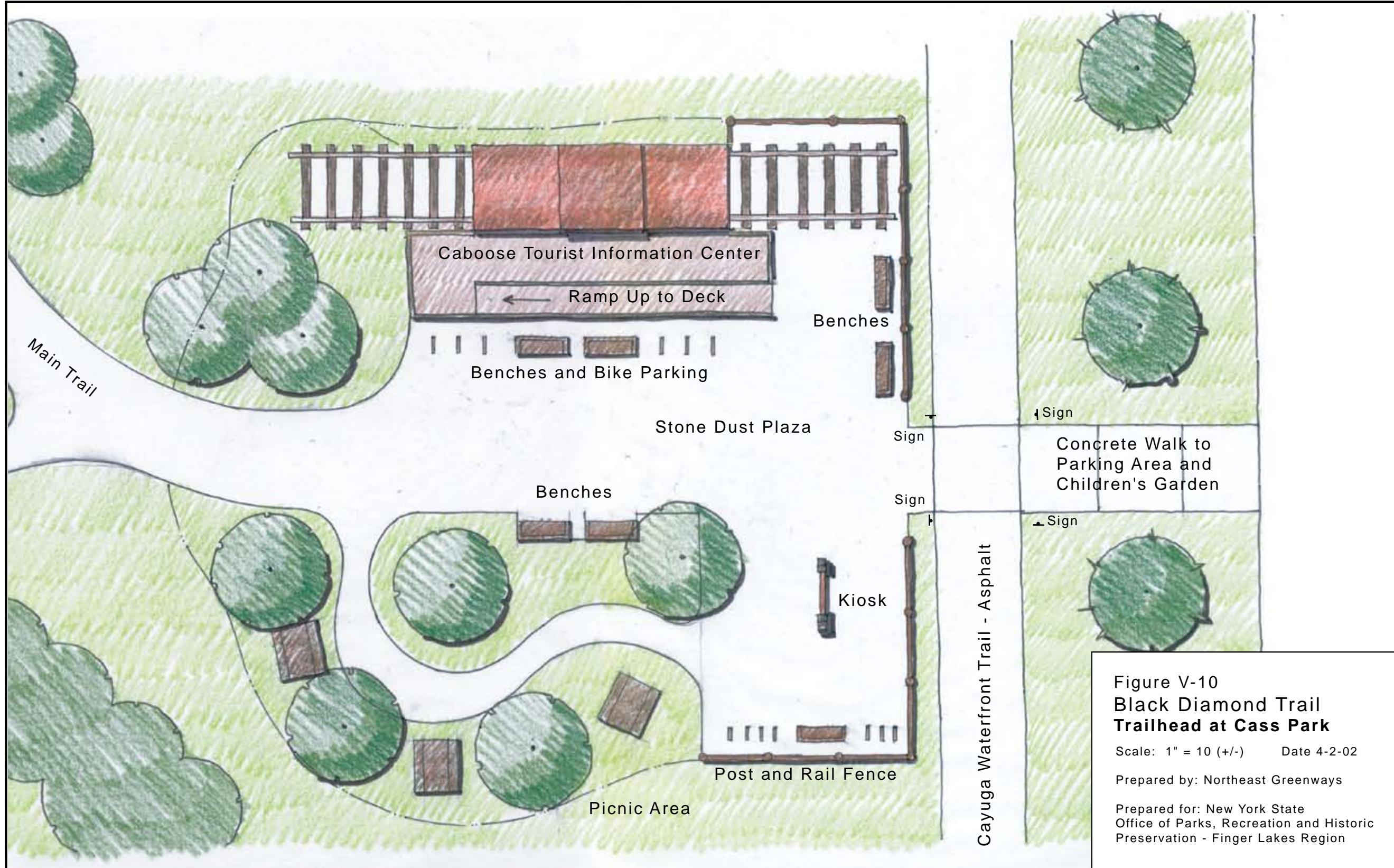


Figure V-10
Black Diamond Trail
Trailhead at Cass Park
 Scale: 1" = 10' (+/-) Date 4-2-02
 Prepared by: Northeast Greenways
 Prepared for: New York State
 Office of Parks, Recreation and Historic
 Preservation - Finger Lakes Region

THIS PAGE INTENTIONALLY LEFT BLANK