

Raingardens installed as part of Stormwater Management System.

Dickinson Hill Fire Tower Rehabilitated.

Nature Center
•Environmental Education
•Amphitheater
•Trail Head

Shaver Pond Nature Center to be renovated for other park uses.

New Pavilion at Deerfield

New Park Office and Camper Registration

RECREATION FACILITY and PROGRAMS

Picnic Groves
The north area will be dismantled and allowed to revert to natural community. The south area will be rehabilitated and a new playground will be added.

Picnic Pavilions/Tents
All large canopy tents will be replaced with permanent pavilions, a new pavilion will be installed at Deerfield.

Court and Field Games
A new full basketball court will be installed at Rabbit Run and Deerfield. A Bocce court will be installed at Deerfield.

Hunting and Fishing
Hunting and Fishing will continue to be allowed at the park under the existing regulations.

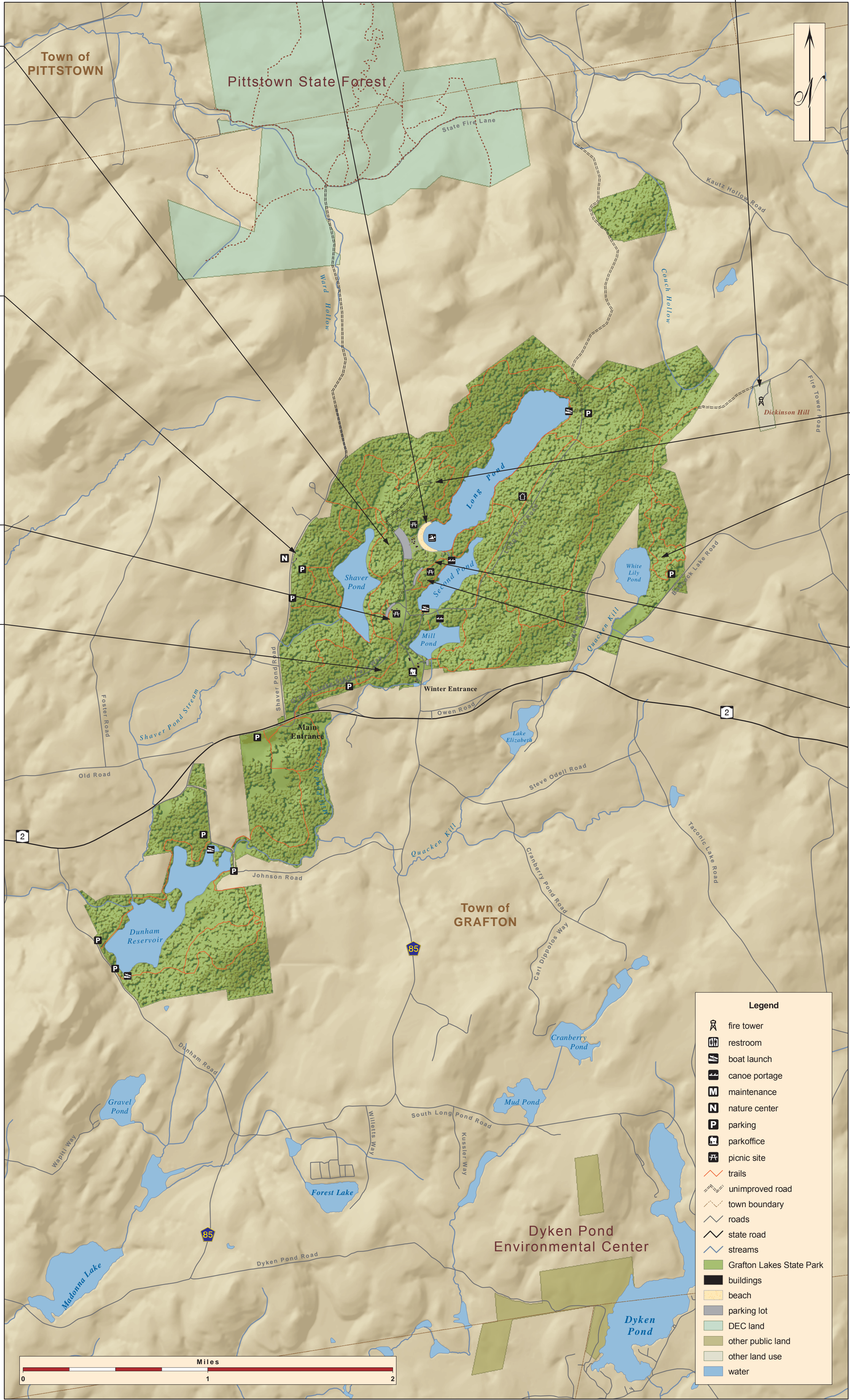
CULTURAL and SCENIC RESOURCE PROTECTION

Cemeteries
The park will proceed with the recommendations made by the State Historic Preservation Office.

Dickinson Hill Fire Tower
The tower will continue to be restored and, when completed, will be open for public access.

Views
A comprehensive scenic resource management plan will be developed for the fire tower, lake shorelines and hilltop views.

The park, the region and the agency will maintain a policy of commenting on and protecting the park from development outside the park which may negatively impact the scenic resources.



New Camping Area with new playground

New Cabins

South Picnic Area to be rehabilitated and new playground added.

Full Basketball court at Rabbit Run.

NATURAL RESOURCE PROTECTION

Park Preservation Area
A Park Preservation Area (PPA) will be created for the parkland south of NYS Route 2.

Bird Conservation Area
A Bird Conservation Area will be created including the entire park.

Lake Water Quality
A systematic regular monitoring program of water quality and nutrient loading in all the park's lakes will be developed and implemented.

Stormwater Runoff
Beach Area. The existing trench drain system will be rehabilitated and upgraded to drain into a new system of raingardens.

Invasive Species Management
An ISPZ will be created for the entire park. The Park's lakes will be included in the Invasive Species Prevention Zone (ISPZ). Power washing stations will be installed at the control point and the Long Pond boat launch. Invasive species disposal bins will be installed at all boat launches.

Rare, Threatened and Endangered Species
Guidelines will be established based on NHP reports and DEC recommendations.

Reduced Mowing
The existing reduced mowing protocol at the park will be continued. Other lawn areas will be added to the program as appropriate.



Master Plan

Grafton Lakes State Park

Map Produced by NYS OPRHP GIS Unit, January 5, 2012.

