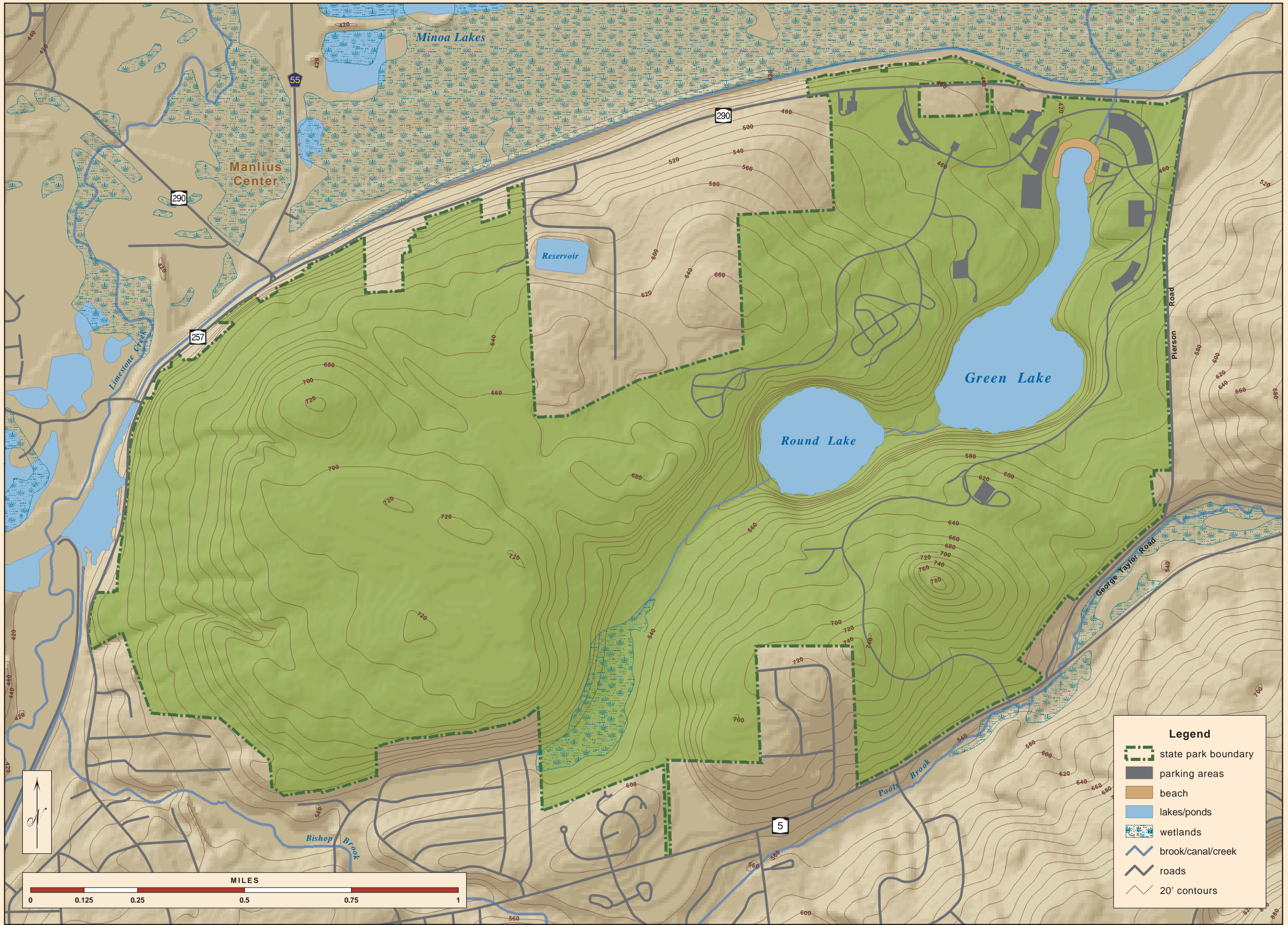


Vicinity Green Lakes State Park

Map produced by NYSOPRHP-GIS Unit, July 29, 2010.





Master Plan

Figure 2

Boundary and Topography

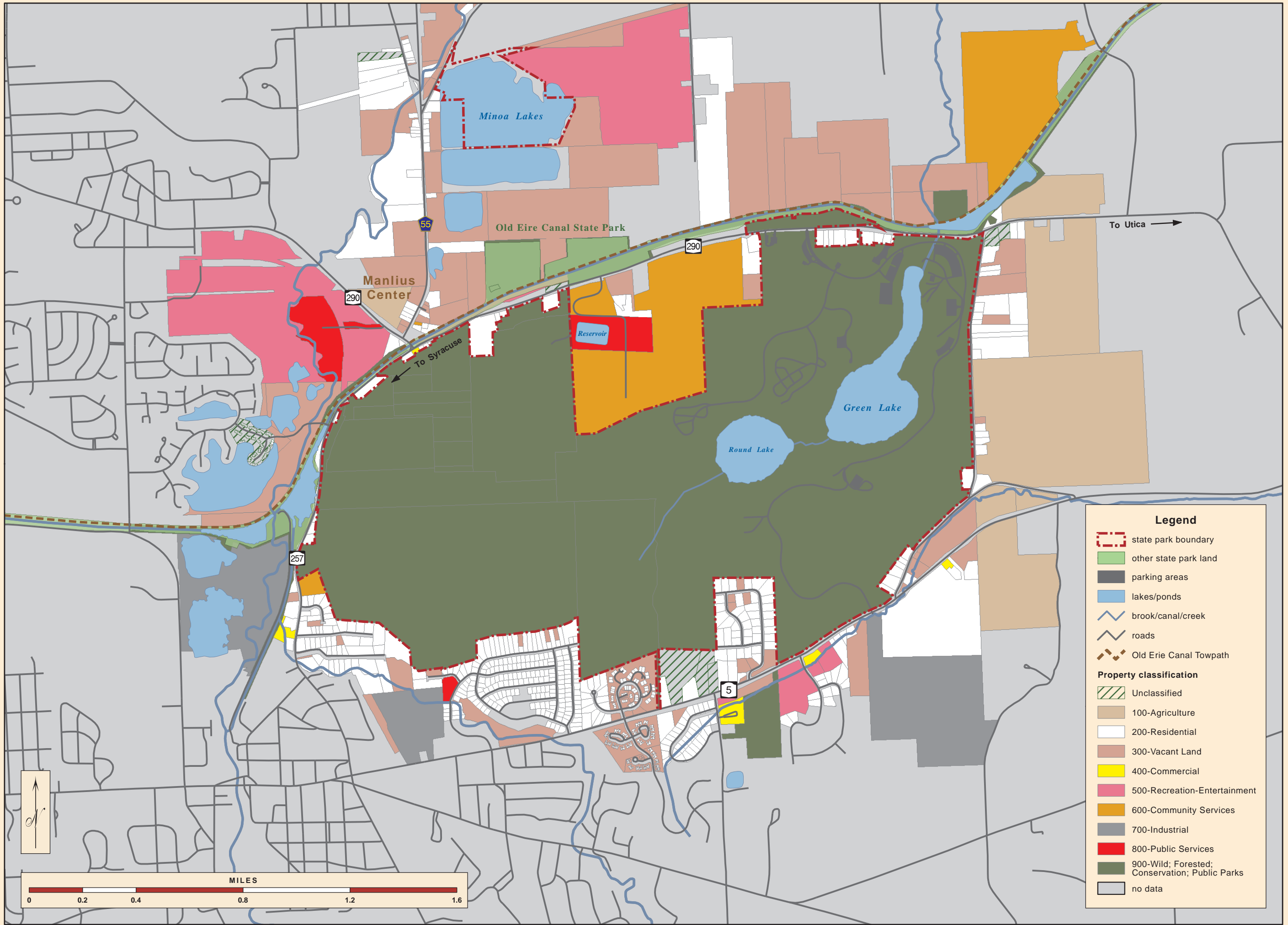
Green Lakes State Park

Map produced by NYSOPRHP-GIS Unit, July 30, 2010.



Legend

- state park boundary
- parking areas
- beach
- lakes/ponds
- wetlands
- brook/canal/creek
- roads
- 20' contours



Adjacent Land Use Green Lakes State Park

Map produced by NYSOPRHP-GIS Unit, July 29, 2010.

Legend

- state park boundary
- other state park land
- parking areas
- lakes/ponds
- brook/canal/creek
- roads
- Old Erie Canal Towpath

Property classification

- Unclassified
- 100-Agriculture
- 200-Residential
- 300-Vacant Land
- 400-Commercial
- 500-Recreation-Entertainment
- 600-Community Services
- 700-Industrial
- 800-Public Services
- 900-Wild; Forested; Conservation; Public Parks
- no data

