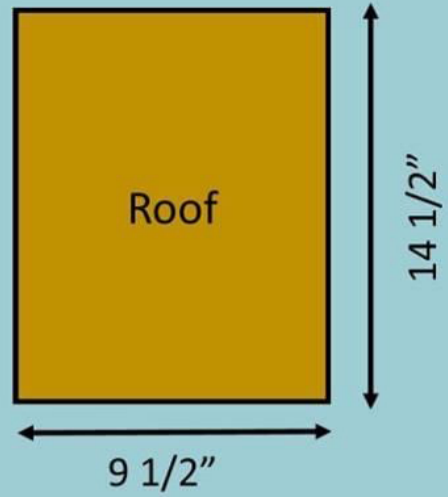


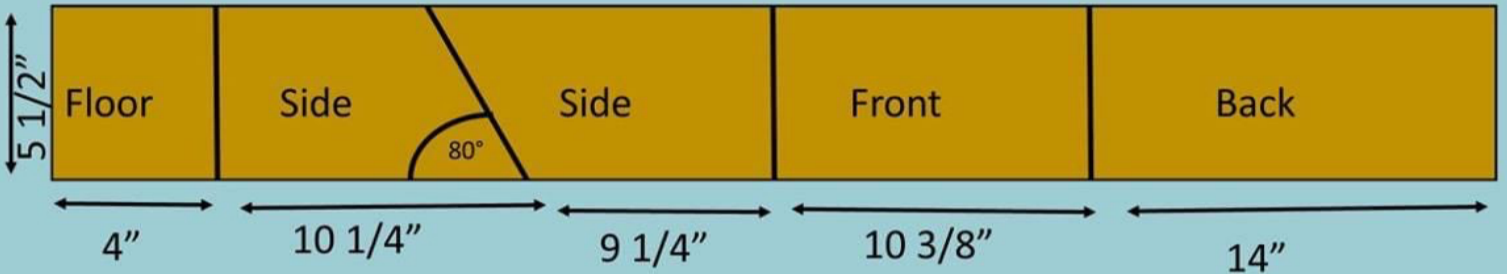
How to Build Bluebird Nest Box

What You need

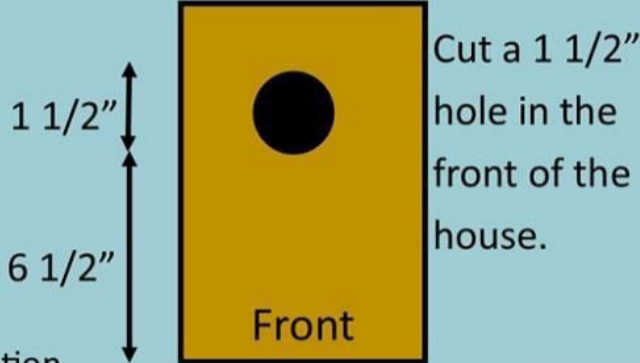
- 1—6"x1" x 4' Long Board
- 1— 9/12" x 14" board - 1 inch thick
- Saw
- Hammer/drill/screwdriver
- About- 20 1 3/4" screws or nails
- 2—1 3/4" screws for the roof



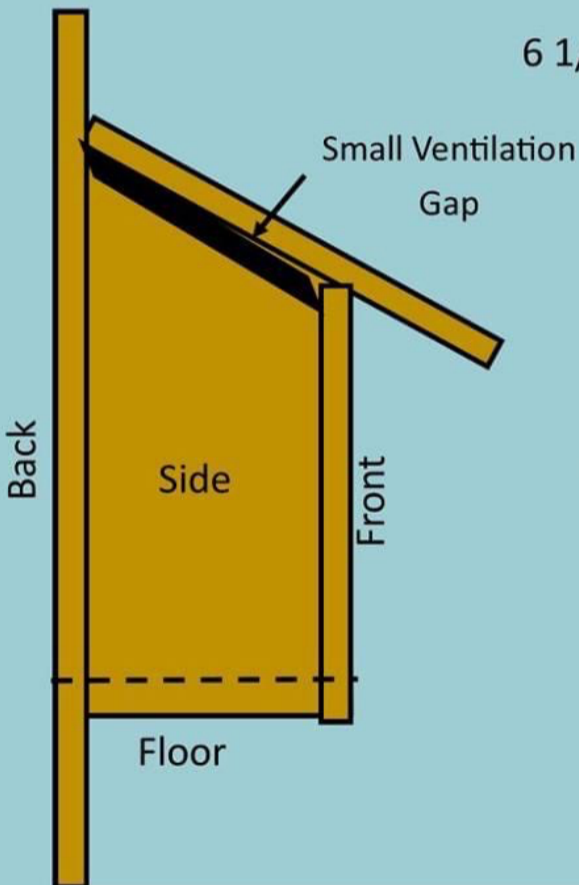
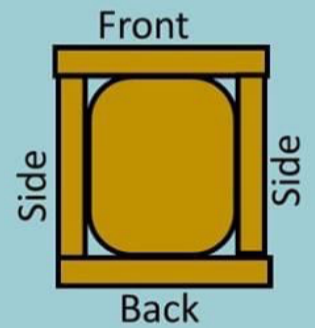
4'



Cut corners off of floor for drainage



Cut a 1 1/2" hole in the front of the house.



- There should be a small gap between the sides and the roof— this is okay! It allows for ventilation.
- Assemble your box using nails for the sides, front back and floor. Use two screws to secure the top. This will allow you to open the top of the box and clean it out.

- The base of the box should be about 4 to 5 feet above the ground. Attach it securely to a post or fence using screws on the top and bottom of the back
- Bluebirds prefer large open areas like lawns or fields.
- Place boxes at least 100 feet away from thick brush or wooded areas.
- To try and eliminate competition between Bluebirds and Tree Swallows, place two boxes about 5 feet away from each other.