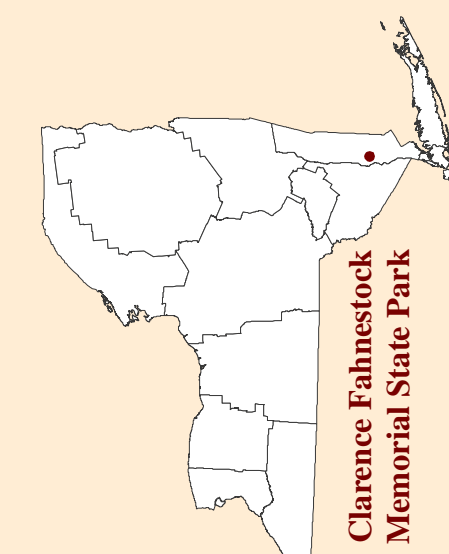




Trails Plan Clarence Fahnestock Memorial State Park

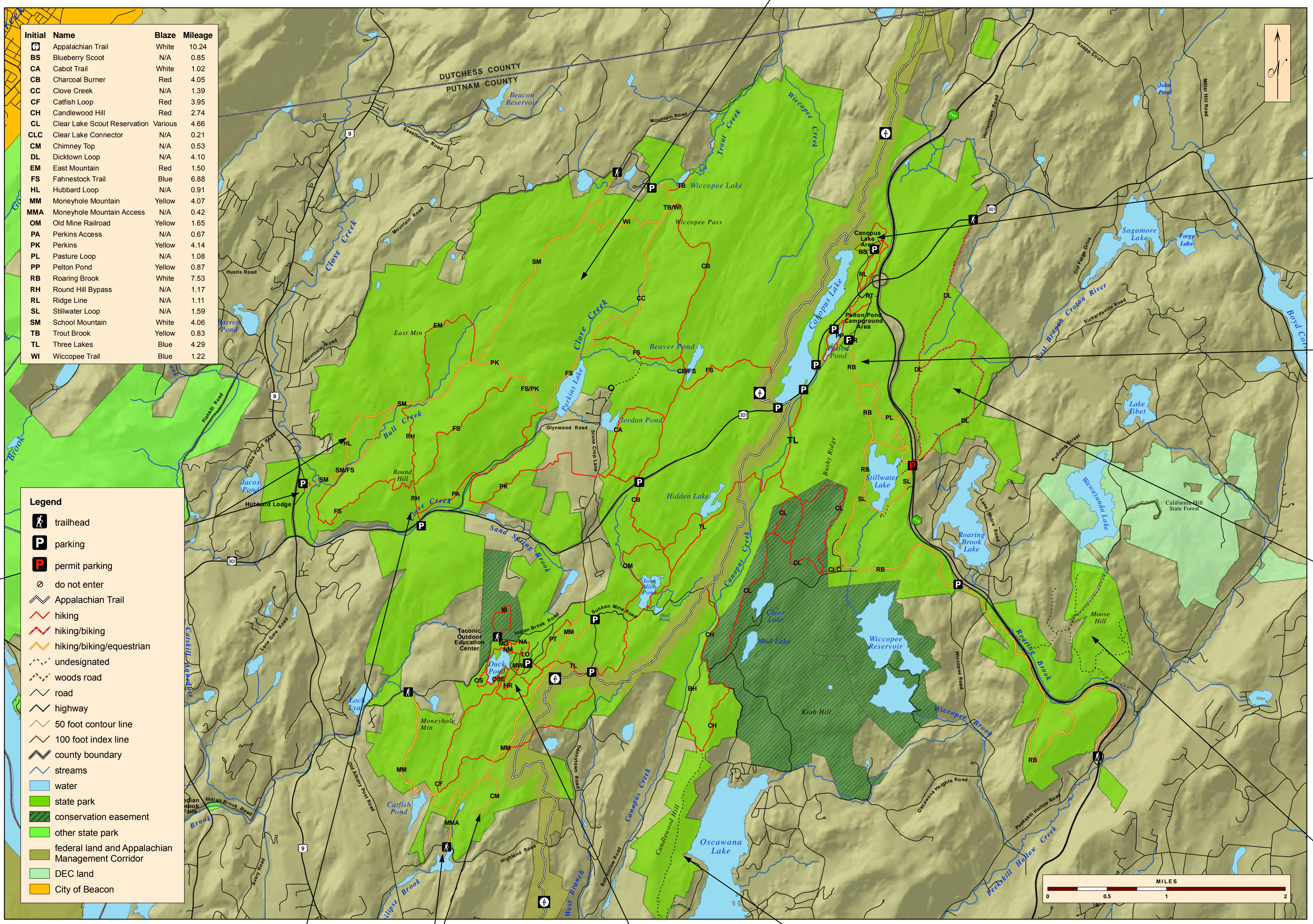
Map produced by NYSOPRHP-GIS Unit, November 24, 2010.



- General**
- Maintain the trail system for designated uses including hiking, biking, horseback riding, cross country skiing and snowshoeing.
 - Improve the trail system through upgrades to unsustainable sections of trail and closure of some undesignated trails.
 - Improve trail signage including trailhead and trail intersection signage.
 - Allow hiking and snowshoeing on all existing, newly developed and newly designated trails.
 - Enhance equestrian and mountain biking opportunities.
 - Designate certain trails and a seasonal road for ungroomed cross country skiing.
 - Enhance trailhead parking facilities in a number of locations.
 - Increase interpretation of natural, cultural and historical resources along trails and through other media.
 - Continue and expand coordination with volunteer groups for the development and maintenance of the trail system.
 - Develop a long-term maintenance and monitoring plan, including a Summit Stewardship Program/Volunteer Ambassador Program, to ensure continued sustainability of the trail system.
 - Maintain and enhance connections to external trail systems and surrounding communities.

- Hubbard Lodge vicinity**
- Develop a new formal parking area at Hubbard Lodge including space for horse trailers.
 - Develop a multi-use trail to the northeast of Hubbard Lodge off School Mountain Trail.

- Highlands Trail**
- Routing for the Highlands Trail will be further reviewed and assessed.



- Clove Creek Area**
- Designate additional multi-use trails to provide increased opportunities for hikers, bikers and equestrians.

- Canopus Lake Day Use Area and Pelton Pond Campground Area**
- Designate some of the currently winter use only trails for summer use (hiking only and multi-use trails).
 - Construct a bridge over Route 301 near beach/campground entrances.
 - Install signage on connector trails from campground road to Pelton Pond.

- Fahnestock Winter Park**
- Increase the groomed cross country ski trail system with an additional loop around Stillwater Lake.
 - Maintain existing marked snowshoe trail system.

- Dicktown Road Area**
- Develop a hiking/biking loop trail east of the Taconic State Parkway.

- Roaring Brook Area**
- Conduct future assessments for designation/development of multi-use (hiking/biking/equestrian) trails.
 - Coordinate with DEC for parking access through the California Hill State Forest.

- Round Hill vicinity**
- Designate/Develop a hiking only trail from the parking area on Route 301 north to School Mountain Trail.
 - Designate a hiking only trail along Clove Creek from the parking area on Route 301 to connect into the Perkins Trail.

- Catfish Pond Area**
- Designate two multi-use trails to the east of the area.

- Taconic Outdoor Education Center**
- Enhance visitor safety and trail experience through installation of trail signage and closure of two trails.

- Candlewood Hill Area**
- Conduct future assessments for designation/development of hiking only trails.