

General

- Maintain the trail system for designated uses including hiking, biking, horseback riding, snowshoeing, cross-country skiing and snowmobiling.
- Improve trail signage including trailhead and trail intersection signage throughout the park to enhance the visitor experience and increase patron safety.
- Improve the trail system through upgrades or reroutes for unsustainable sections of trail.
- Enhance interpretation of natural, cultural and historical resources along trails.
- Continue and expand coordination with volunteer groups for the development and maintenance of the trail system.
- Maintain and enhance connections to external trail systems and communities.

Winter Trail Use

- Install signage for winter use of trails to improve visitor circulation and trail etiquette (i.e. snowshoes required for winter hiking, cross-country skiers to the right and snowshoers to the left).
- New nature center (see master plan) will act as a warming hut for winter uses.
- Mill Pond parking lot will be designated for non-motorized uses only.

Shaver Pond

- Upgrade trail to meet federal accessibility guidelines as is feasible in conjunction with trail connection to future nature center (see master plan).
- Construct a viewing platform at the base of the Granville Hicks Trail for scenic vista and protection of shoreline resources.
- Install educational signage regarding invasive species including for proper disposal of horse droppings.

Scout Trail

- Reroute eroded section of trail.

Red Eft Trail

- Reroute western section of trail to connect into extension of Perkins Trail.

Perkins Trail

- Extend trail to Route 2 crossing.

Route 2 crossing

- Install trail crossing markings and signage to improve connections between north and south trail systems.

Fruit Loop Trail

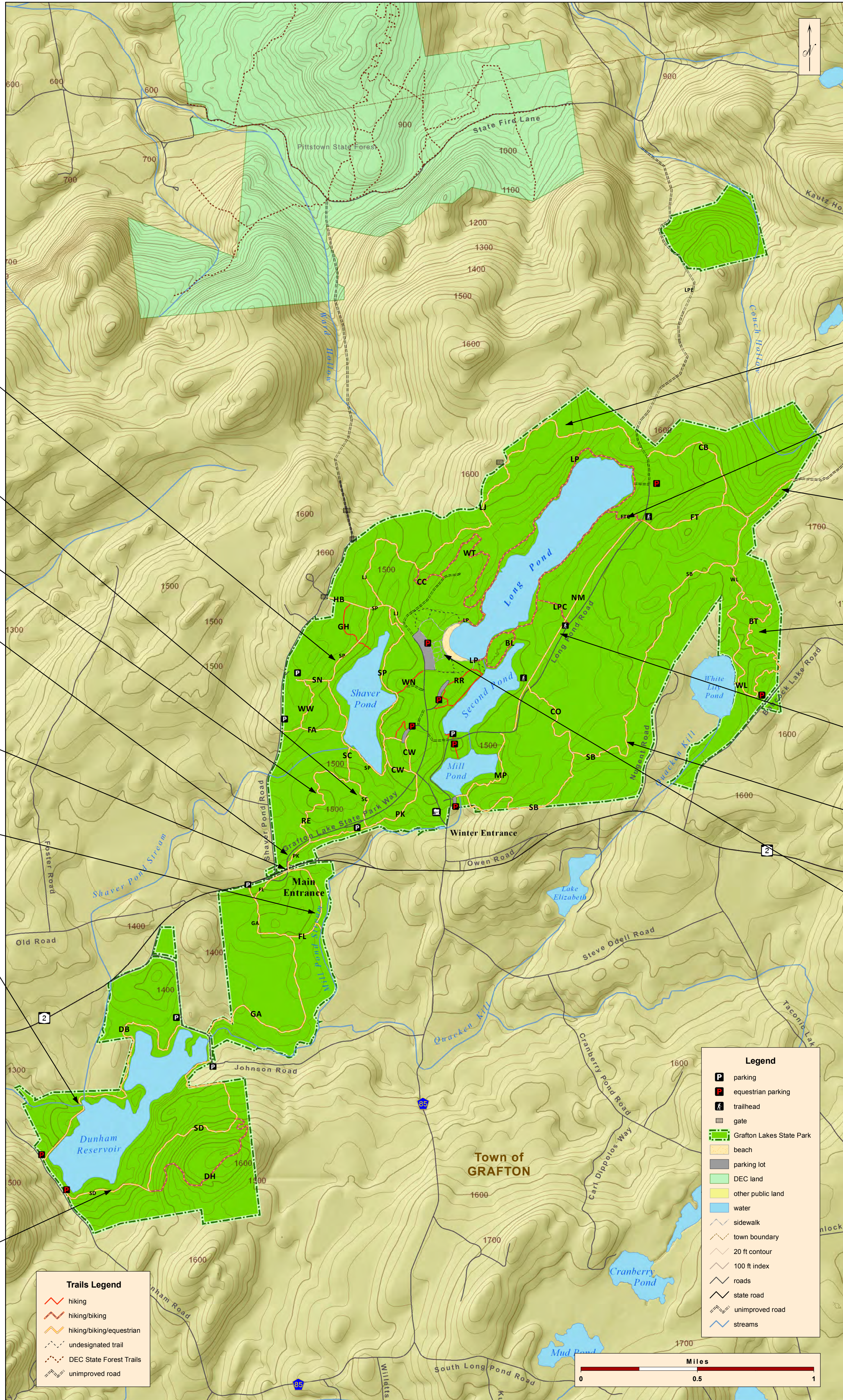
- Construct trail to create loop with Garter's Trail. Provide connection across Route 2 to Perkins Trail and spur trail to Trail Riders' parcel.

Double Bit Path

- Conduct feasibility study for reservoir outlet trail crossing.

South Dunham Trail

- Remove snowmobile use from trail.
- Reroute southern section of trail to connect into parking lot at southern end of reservoir.
- Construct Dunham Hill trail to provide access to more park resources.



Little Johnny's Trail

- Construct bridge or boardwalk at stream/wetland crossing.

Fire Tower Connector Trail

- Reroute trail with more sustainable alignment.
- Install directional signage for Fire Tower when opened.

Fire Tower Trail

- Request town abandonment of Fire Tower Road within the park.
- Install a fence and gate at the park boundary.
- Work with town to address major drainage issues near park boundary.

White Lily Pond Area

- Develop White Lily Trail for all designated trail uses.
- Develop Beechnut Trail for non-motorized designated trail uses.
- Expand parking area for trailer parking in conjunction with development of cabins (see master plan).
- Research feasibility and appropriate location for development of a bird viewing platform or boardwalk adjacent to pond.

NIMO Trail

- Extend the snowmobile trail along power line from NIMO Trail to existing park office/shop. Move S99 off of Long Pond Road.
- Improve treadway through fill and culvert installation to accommodate all designated uses including snowmobiling. Move C9 off of Long Pond Road.

Spruce Bog Trail

- Further assess trail alignment for eastern section of reroute.

Day-Use Area

- Develop three loop trails to accommodate high use of area and enhance use for families with children and for persons with varying abilities.
- Improve directional and trailhead signage in area to better promote use of the trail system.

Trails Legend

- hiking
- hiking/biking
- hiking/biking/equestrian
- undesignated trail
- DEC State Forest Trails
- unimproved road

Legend

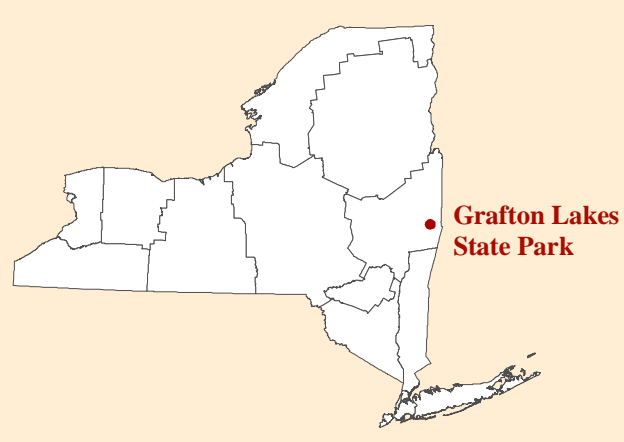
- parking
- equestrian parking
- trailhead
- gate
- Grafton Lakes State Park
- beach
- parking lot
- DEC land
- other public land
- water
- sidewalk
- town boundary
- 20 ft contour
- 100 ft index
- roads
- state road
- unimproved road
- streams

Equestrians

- Install signage stating no equestrian trailer parking at beach parking lot during summer season.
- Install hitching posts at various locations throughout the park to accommodate equestrian users.
- Develop trailer parking at the South Dunham trailhead along Dunham Road and at White Lily Pond in conjunction with trail development.
- Relocate spur trail to Trail Riders' parcel out of wetland area.

Water Trail

- Enhance signage and maps to promote use of the water trail consisting of Long, Second and Mill Ponds.
- Install boat washing stations and educational information regarding aquatic invasive species.



Trails Plan

Grafton Lakes State Park

Map Produced by NYSOPRHP GIS Unit, December 20, 2011

