

Niagara Gorge Corridor

*Robert Moses Parkway Removal
Main Street to Findlay Drive
Niagara Falls, NY*

Design Report/

Environmental Assessment

Appendix B - Alternatives/Concepts Considered and Rejected

- B.1 Initial Retained Alternatives (Taken from
Final Scoping Report - May 2013)**
- B.2 Concepts Considered (Presented at
February 2015 Public Meeting)**

PIN 5761.90

July 2016

In cooperation with:

**New York State Department of Transportation
New York Power Authority
USA Niagara Development Corporation
The City of Niagara Falls, NY**



Appendix B - Alternatives Considered and Rejected

B.1 - Initial Retained Alternatives (taken from Final Scoping Report - May 2013)

Alternative 3 - Partial Re-Use of the Robert Moses Parkway

Alternative 4 - Meandering Partial Park Road

Alternative 6 - Removal of the Parkway

B.2 - Concepts Considered (Presented at February 2015 Public Meeting)

Concept A - No Park Road with stop sign on Findlay Drive at Whirlpool Street

Concept B - Park Road between Main Street and Walnut Avenue with stop sign on Whirlpool Street at Findlay Drive

Concept C - Park Road between Main Street and Cedar Avenue with stop sign on Findlay Drive at Whirlpool Street

B.1 - Initial Retained Alternatives (taken from Final Scoping Report - May 2013)

Alternative 3 - Partial Re-Use of the Robert Moses Parkway

Alternative 4 - Meandering Partial Park Road

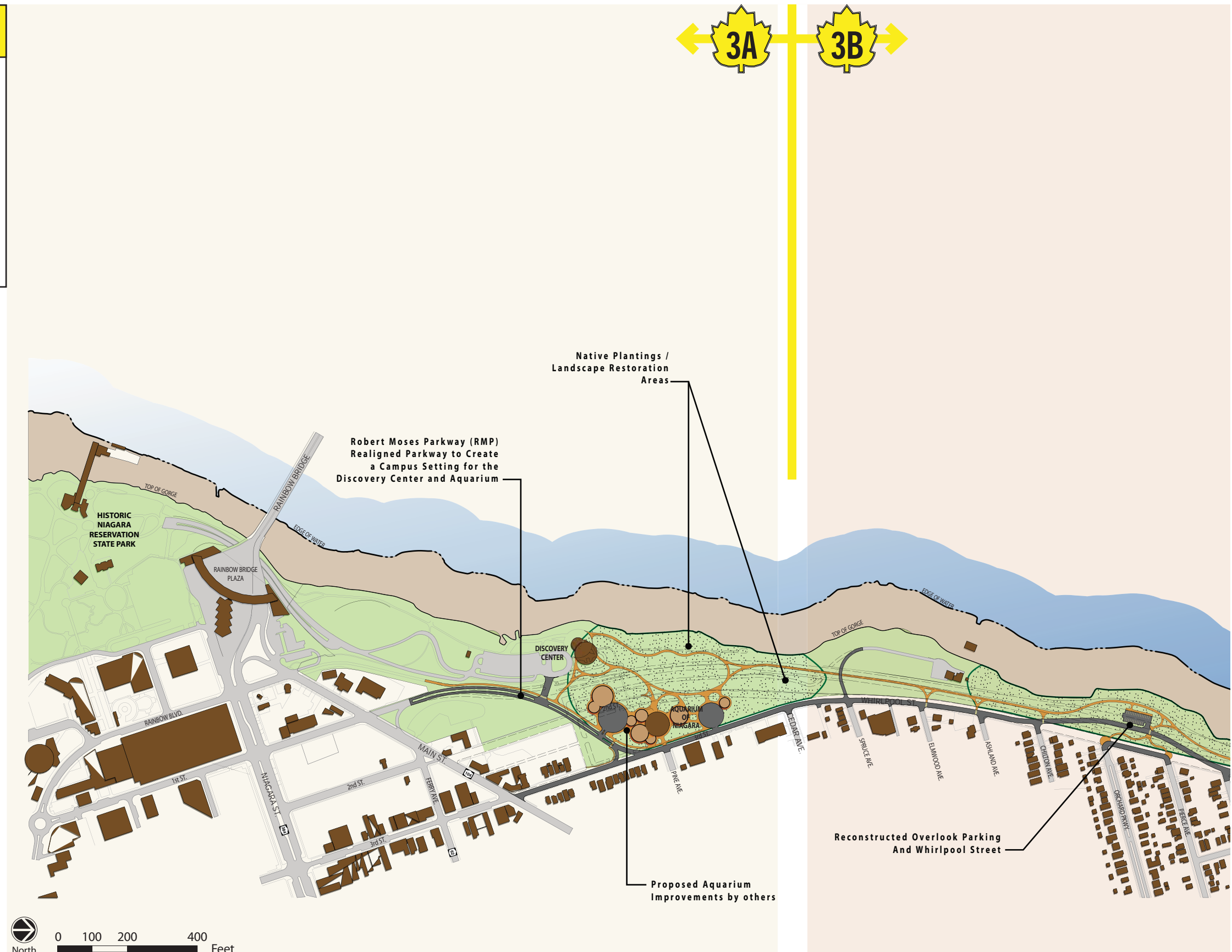
Alternative 6 - Removal of the Parkway

3A MAIN ST. TO CEDAR AVE.

- Remove the roadway segment between the Discovery Center and the Aquarium and replace it with an "S" curve to Third Street at Pine Avenue.
- Remove the pedestrian overpass between Aquarium and Discovery Center; connect the facilities with a landscape of broad walks and native plants; accent with interpretive features.
- Design the multimodal trail to service both facilities.

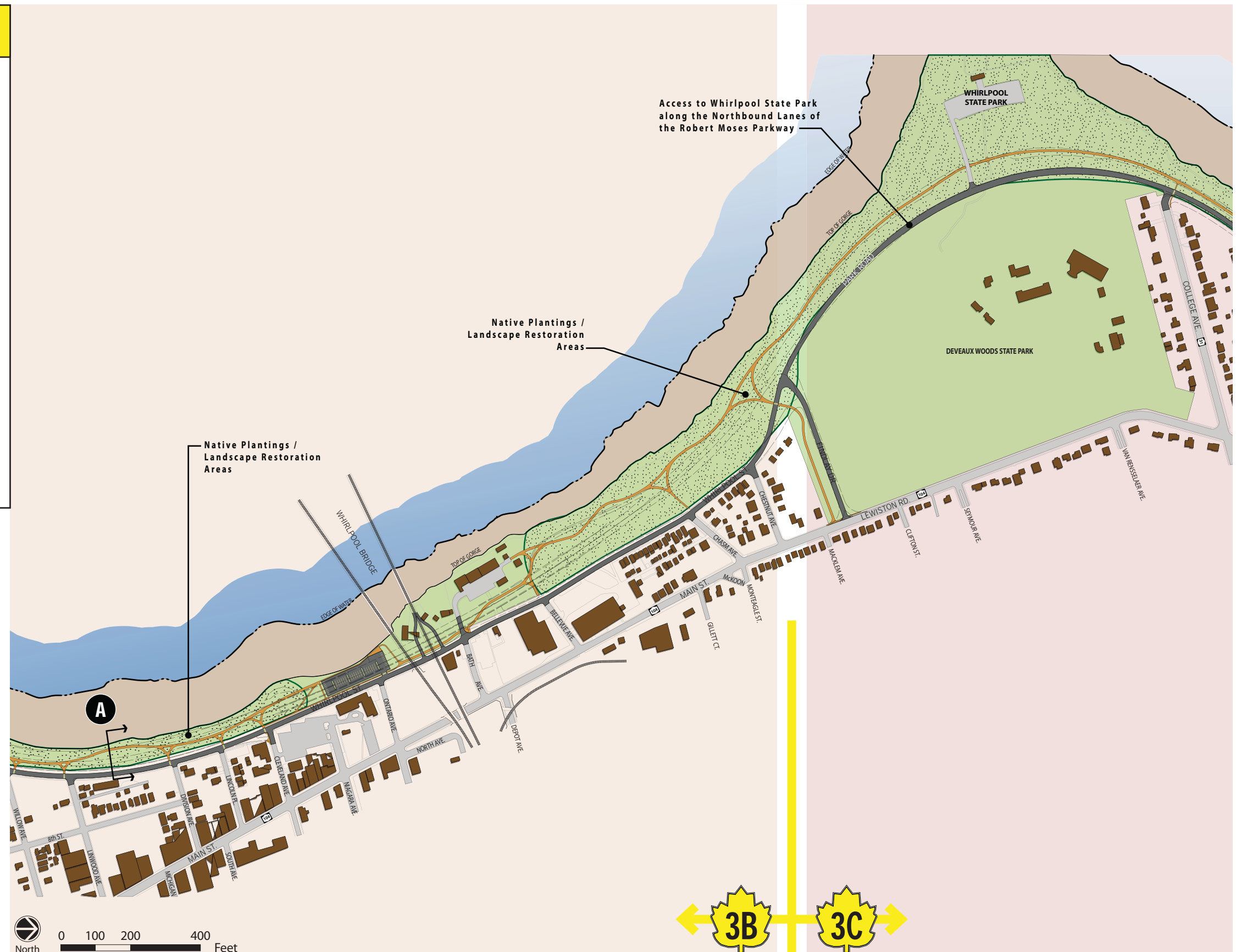
LEGEND

- Proposed Pavement
- Proposed Multi-Use Trail
- Existing Pavement
- Pavement to be Removed
- Greenspace / Park Land
- Lower Gorge Area
- Native Plantings / Landscape Restoration Areas
- Section Location



3B CEDAR AVE. TO FINDLAY DR.

- Redesign Whirlpool Street from Cedar Avenue to Findlay Drive. Curve Whirlpool Street to the lower level (where the 2-way RMP is now) and bring the road into the Orchard Parkway Overlook.
- Loop Orchard Parkway with Pierce Avenue; connect the neighborhood to the Overlook and multimodal trail with pedestrian crossings.
- Connect city sidewalks to the multimodal trail with numerous safe pedestrian and bicycle crossings.
- Remove the Whirlpool Bridge Overpass.
- Provide gorge trail and overlook parking near Whirlpool Bridge.
- Expand native meadow and shrub plantings in mowed lawn areas.
- Design a new entry feature to the gorge area parks at Findlay Drive.



LEGEND

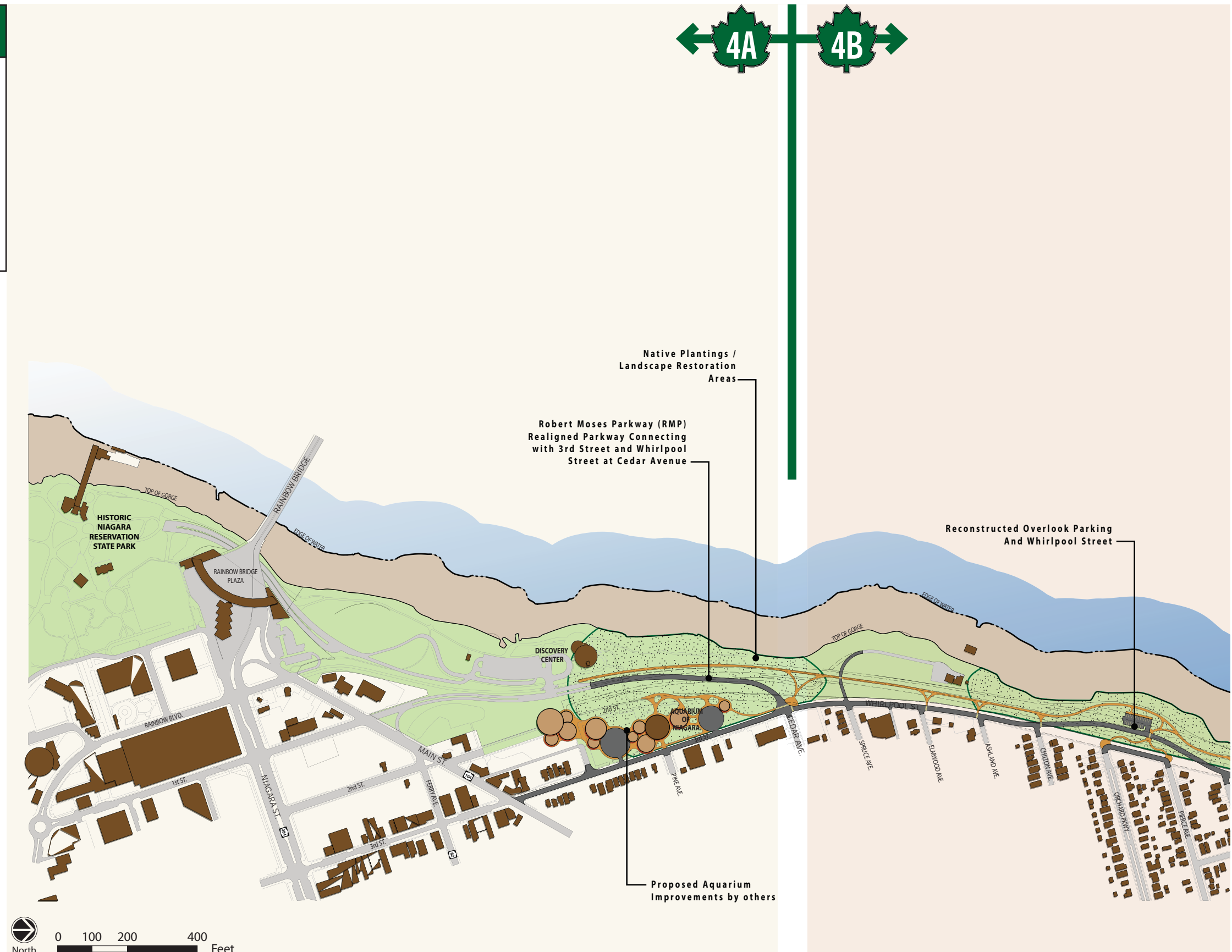
- Proposed Pavement
- Proposed Multi-Use Trail
- Existing Pavement
- Pavement to be Removed
- Greenspace / Park Land
- Lower Gorge Area
- Native Plantings / Landscape Restoration Areas
- Section Location

4A MAIN ST. TO CEDAR AVE.

- Curve the segment of the 2-way park roadway between the Discovery Center and the Aquarium; connect to Third Street at Cedar Avenue.
- Design an entry feature to Niagara Falls State Park at Whirlpool and Cedar Avenue
- Retain the pedestrian overpass between the Aquarium and the Discovery Center.

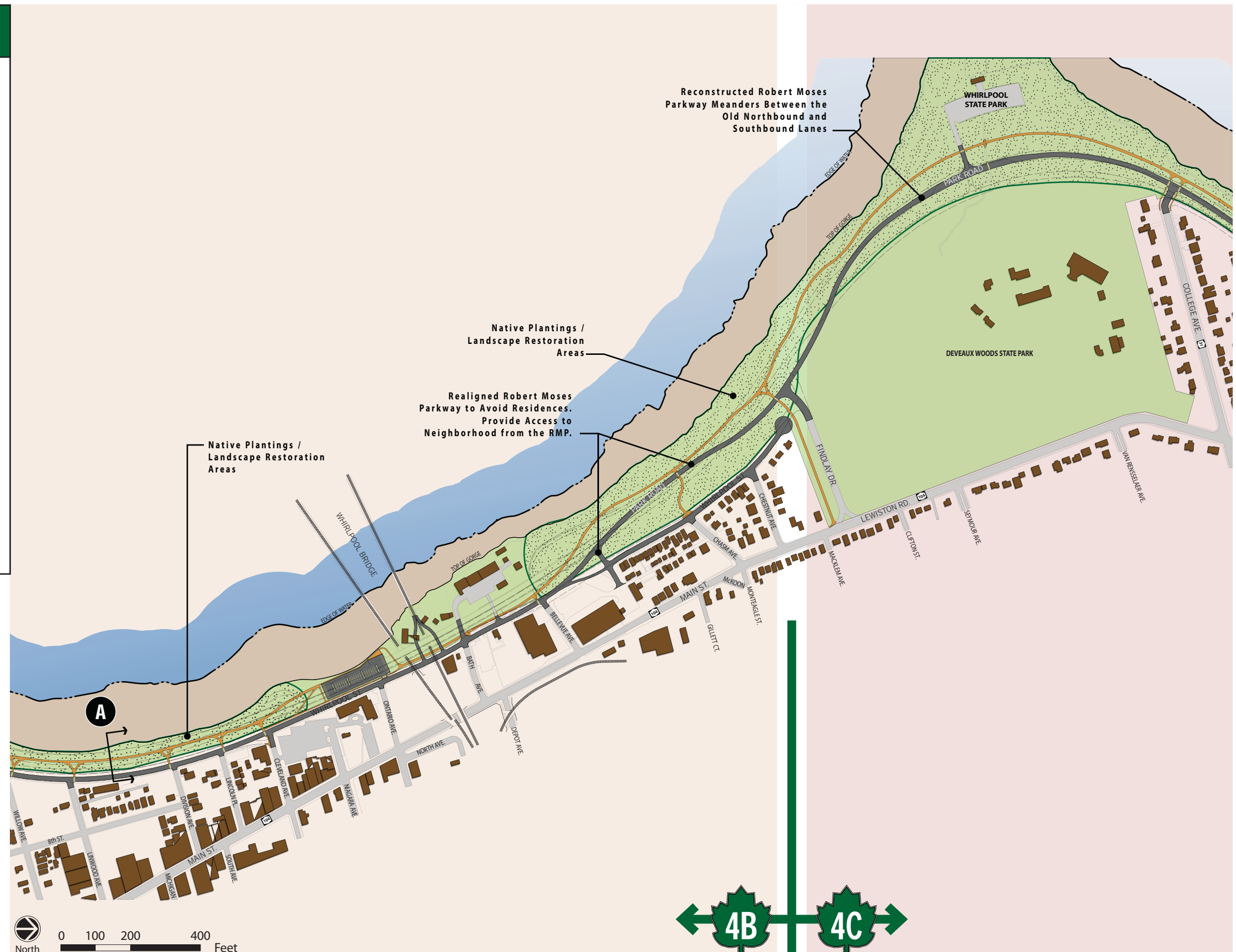
LEGEND

- Proposed Pavement
- Proposed Multi-Use Trail
- Existing Pavement
- Pavement to be Removed
- Greenspace / Park Land
- Lower Gorge Area
- Native Plantings / Landscape Restoration Areas
- Section Location



4B CEDAR AVE. TO FINDLAY DR.

- Redesign Whirlpool Street from Cedar Avenue to Findlay Drive. Curve Whirlpool Street to the lower level (where the 2-way RMP is now) and bring the road into the Orchard Parkway Overlook.
- Loop Orchard Parkway with Pierce Avenue; connect the neighborhood to the Overlook and multimodal trail with pedestrian crossings.
- Expand native meadow and shrub plantings in mowed lawn areas.
- Remove the Whirlpool Bridge Overpass. Provide overlook parking area near the Whirlpool Bridge.
- At the Whirlpool Bridge, by-pass the Bellevue neighborhood by sliding Whirlpool Street over to the existing 2-way park road. Cul de sac Old Whirlpool at Findlay Drive.
- Design a new multimodal trail with numerous safe pedestrian and bicycle crossings to city neighborhoods.
- Design an entry feature to gorge area parks at Findlay Drive; continue the 2-way park road on existing pavement.



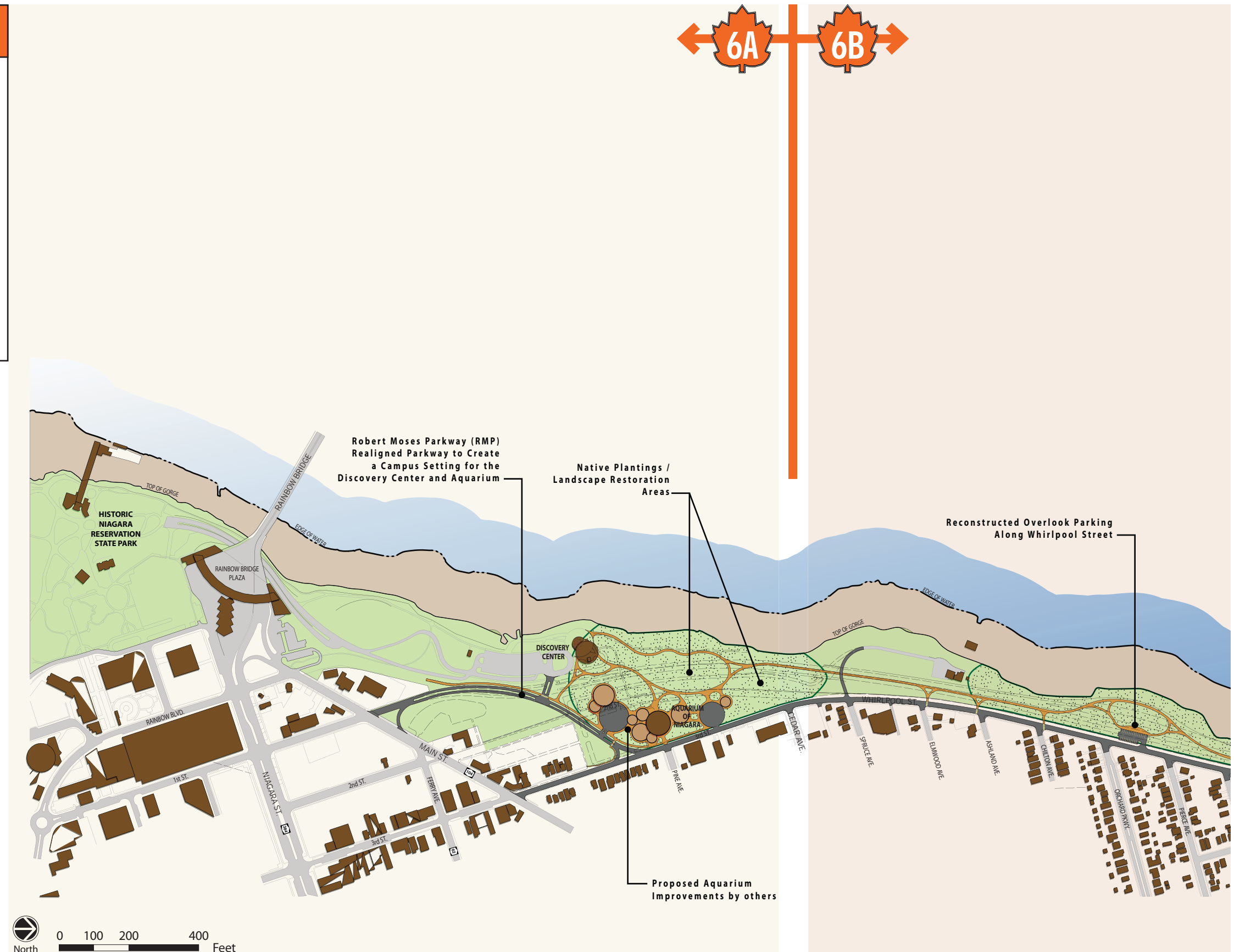
LEGEND

- Proposed Pavement
- Proposed Multi-Use Trail
- Existing Pavement
- Pavement to be Removed
- Greenspace / Park Land
- Lower Gorge Area
- Native Plantings / Landscape Restoration Areas
- Section Location

6A

MAIN ST. TO CEDAR AVE.

- Remove the roadway segment between the Discovery Center and the Aquarium and replace it with an "S" curve to Third Street at Pine Avenue.
- Restore former roadways with new soil and native plantings.
- Remove the pedestrian overpass between Aquarium and Discovery Center. Connect the facilities with a landscape of broad walks and native plants; accent with interpretive features
- Reconfigure pedestrian and bicycle traffic routes through the area.

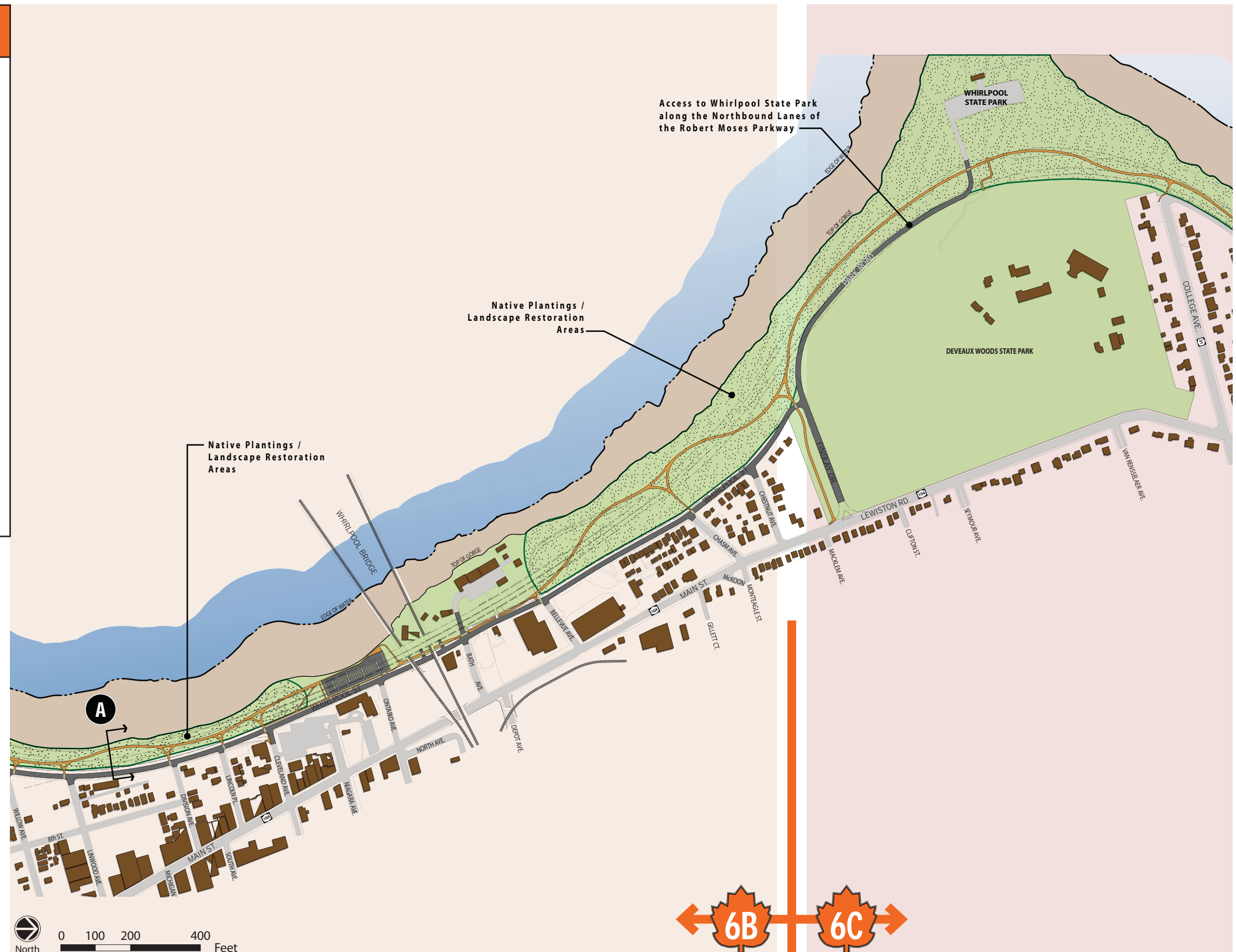


LEGEND

- Proposed Pavement
- Proposed Multi-Use Trail
- Existing Pavement
- Pavement to be Removed
- Greenspace / Park Land
- Lower Gorge Area
- Native Plantings / Landscape Restoration Areas
- Ⓐ Section Location

6B CEDAR AVE. TO FINDLAY DR.

- Remove all of RMP between Cedar Avenue and Findlay Drive. Redesign Whirlpool Street from Cedar Avenue to Findlay Drive to have one lane in each direction, wide tree lawns, and sidewalks.
- Relocate the Orchard Parkway Overlook closer to Whirlpool Street which reclaims parkland for restoration and provides a more pedestrian/bicycle friendly environment.
- At Findlay drive, shift all traffic to Main Street. Design a new entrance feature to the gorge area parks.
- Design a new multimodal trail with numerous safe pedestrian and bicycle crossings to neighborhood sidewalks.
- Remove the Whirlpool Bridge overpass and expand the gorge rim woodland landscape.
- Provide a gorge trailhead and overlook parking area near the Whirlpool Bridge.
- Continue Whirlpool Street to Findlay Drive.



LEGEND

- Proposed Pavement
- Proposed Multi-Use Trail
- Existing Pavement
- Pavement to be Removed
- Greenspace / Park Land
- Lower Gorge Area
- Native Plantings / Landscape Restoration Areas
- Section Location

B.2 - Concepts Considered (Presented at February 2015 Public Meeting)

Concept A - No Park Road with stop sign on Findlay Drive at Whirlpool Street

Concept B - Park Road between Main Street and Walnut Avenue with stop sign on Whirlpool Street at Findlay Drive

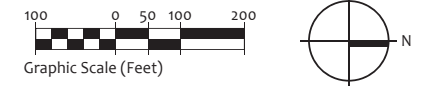
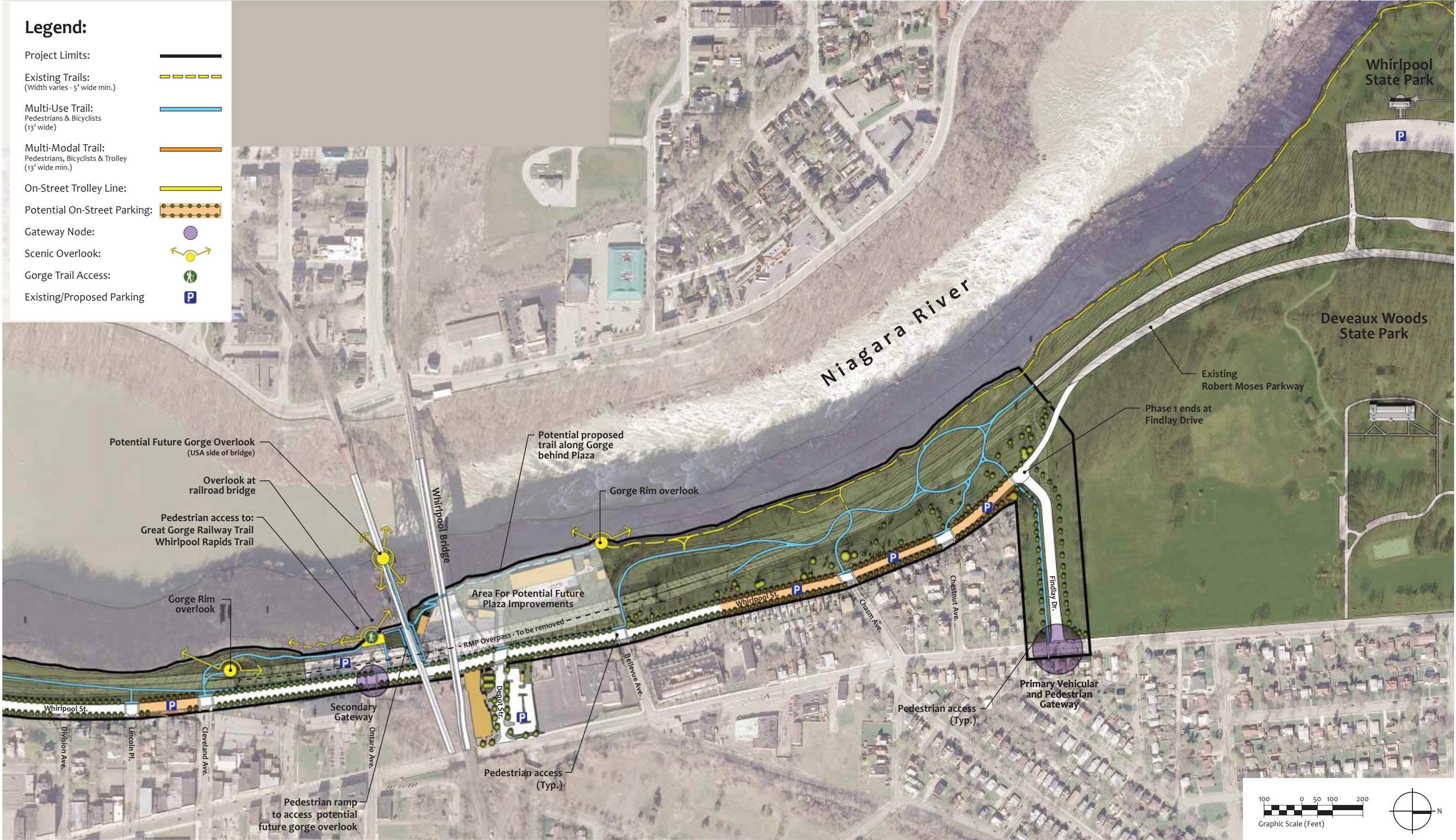
Concept C- Park Road between Main Street and Cedar Avenue with stop sign on Findlay Drive at Whirlpool Street

CONCEPT A



CONCEPT A (continued)

- Legend:**
- Project Limits:
 - Existing Trails: (Width varies - 5' wide min.)
 - Multi-Use Trail: Pedestrians & Bicyclists (13' wide)
 - Multi-Modal Trail: Pedestrians, Bicyclists & Trolley (13' wide min.)
 - On-Street Trolley Line:
 - Potential On-Street Parking:
 - Gateway Node:
 - Scenic Overlook:
 - Gorge Trail Access:
 - Existing/Proposed Parking:



CONCEPT B



Legend:

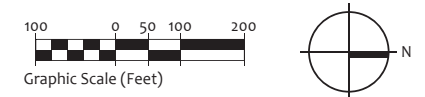
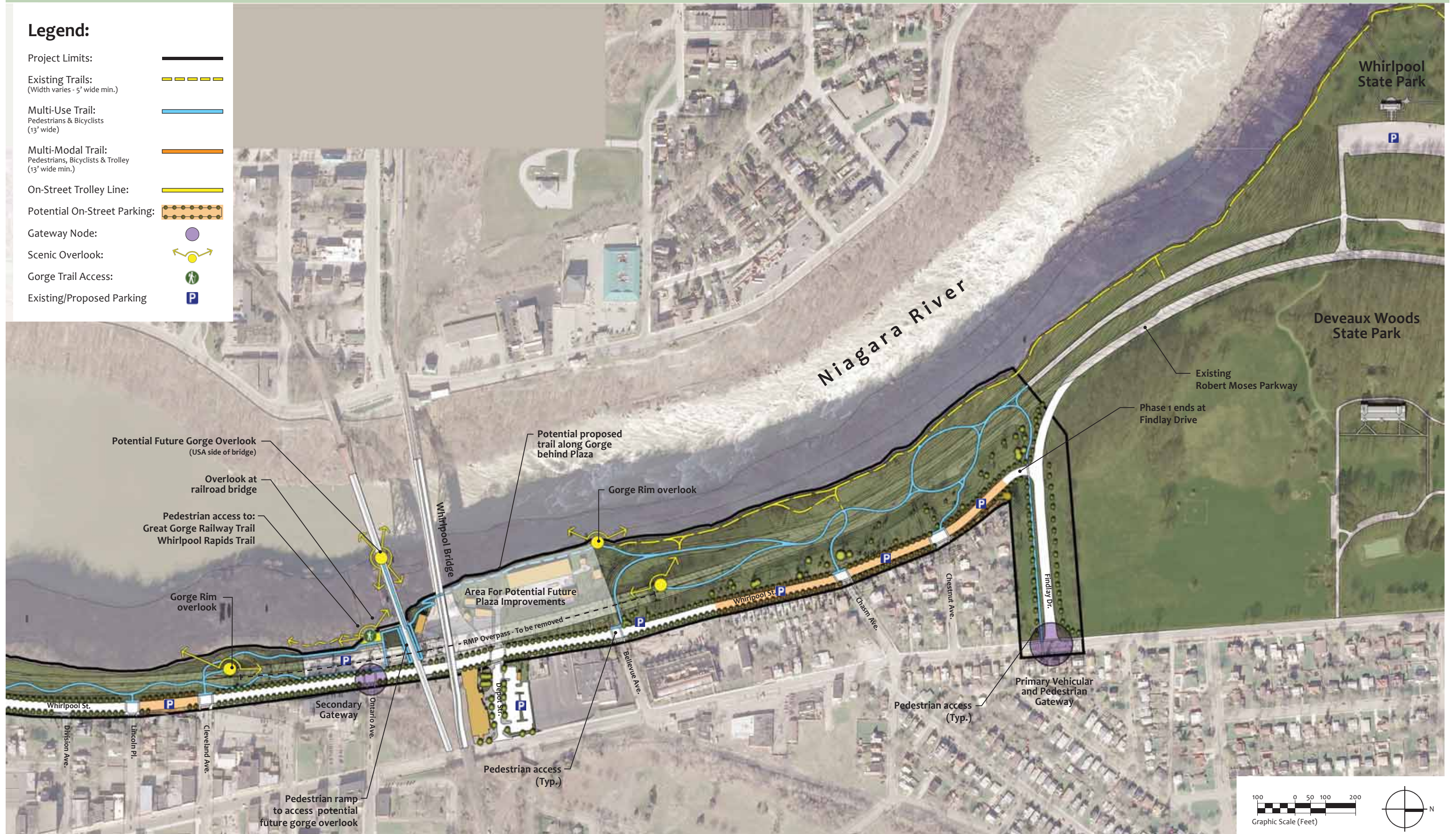
- Project Limits:
- Existing Trails: (Width varies - 5' wide min.)
- Multi-Use Trail: Pedestrians & Bicyclists (13' wide)
- Multi-Modal Trail: Pedestrians, Bicyclists & Trolley (13' wide min.)
- On-Street Trolley Line:
- Potential On-Street Parking:
- Gateway Node:
- Scenic Overlook:
- Gorge Trail Access:
- Existing/Proposed Parking:



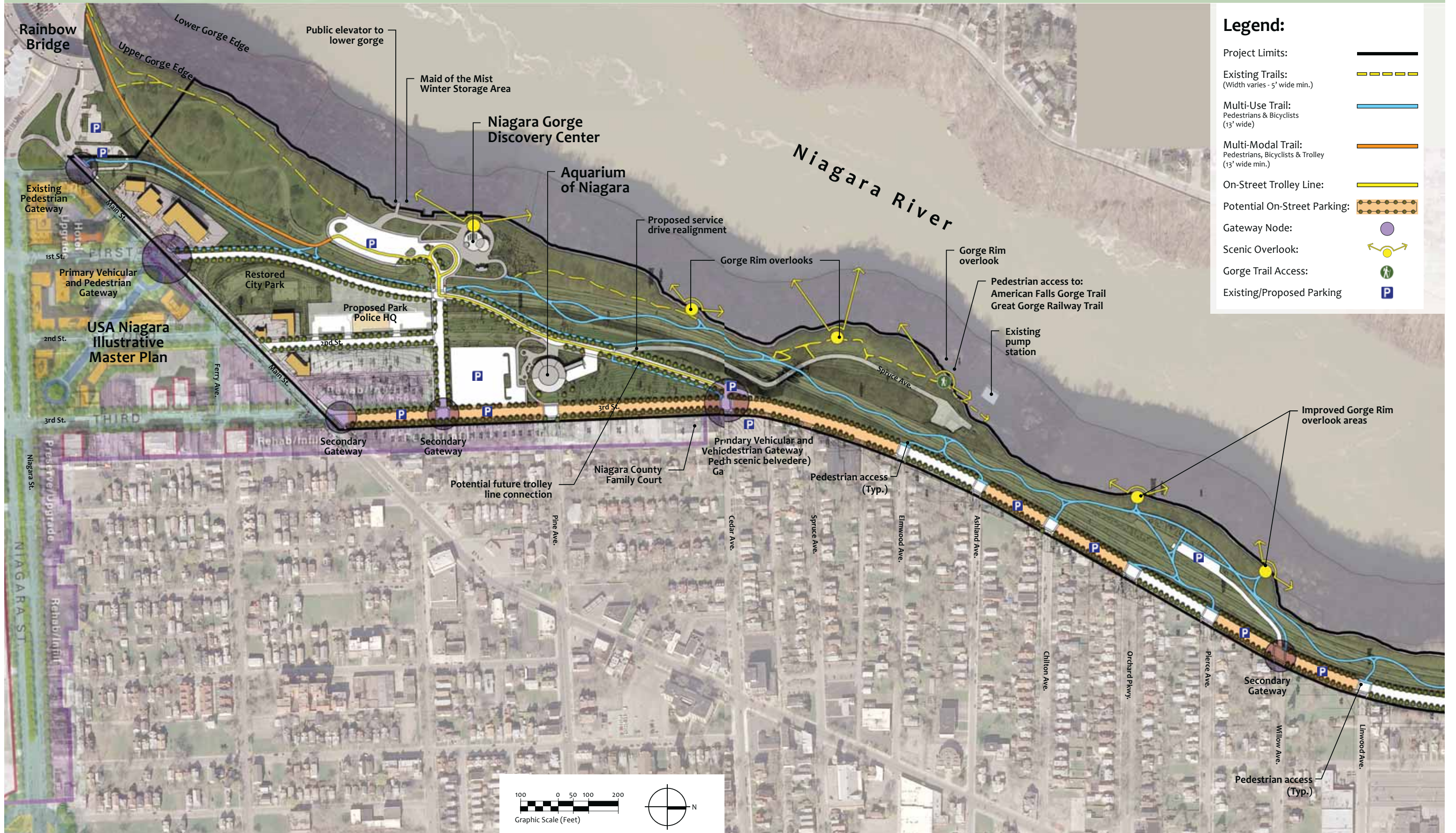
CONCEPT B (continued)

Legend:

- Project Limits:
- Existing Trails: (Width varies - 5' wide min.)
- Multi-Use Trail: Pedestrians & Bicyclists (13' wide)
- Multi-Modal Trail: Pedestrians, Bicyclists & Trolley (13' wide min.)
- On-Street Trolley Line:
- Potential On-Street Parking:
- Gateway Node:
- Scenic Overlook:
- Gorge Trail Access:
- Existing/Proposed Parking:



CONCEPT C



CONCEPT C (continued)

Legend:

- Project Limits:
- Existing Trails: (Width varies - 5' wide min.)
- Multi-Use Trail: Pedestrians & Bicyclists (13' wide)
- Multi-Modal Trail: Pedestrians, Bicyclists & Trolley (13' wide min.)
- On-Street Trolley Line:
- Potential On-Street Parking:
- Gateway Node:
- Scenic Overlook:
- Gorge Trail Access:
- Existing/Proposed Parking:

