

Philipse Manor Hall

State Historic Site

Our Whole History



**Parks, Recreation
and Historic Preservation**

Reimagining Philipse Manor Hall State Historic Site

Daniel Mackay, Deputy Commissioner, Division for Historic Preservation



**Parks, Recreation
and Historic Preservation**

Reimagining Philipse Manor Hall SHS

Part 1: Project Inspiration & Progress

Part 2: Community Input

Part 3: Follow-up and Next Steps



Philipse Manor Hall State Historic Site
29 Warburton Ave, Yonkers, NY



**Parks, Recreation
and Historic Preservation**

What is the *whole* history of Philipse Manor?

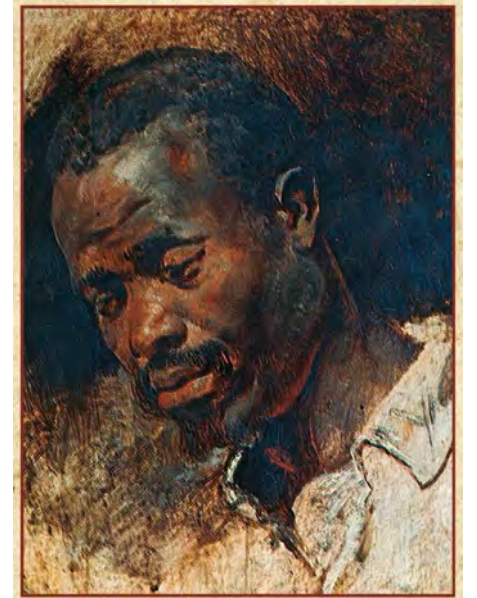
It's an inclusive story about the different groups of people associated with this site over time.



Native Americans



The Philipse Family &
other European Settlers



People of African
Descent

Our Whole History: Reimagining Philipse Manor Hall SHS



Buildings & Landscape:

Parks has begun work to address long identified building and site needs to provide ADA accessibility, improved programming areas, event needs such as catering, and address deferred maintenance projects. Parks has developed preliminary architectural designs based on these long-established needs. Drawings and plans are in progress and will be finalized with public input from these meetings.

New Exhibits:

Parks is in the preliminary concept phase of adapting *Our Whole History* to the story of Philipse Manor Hall. Content will be developed and refined over the next 9 months.

New Programming:

Parks has developed a preliminary list of programming ideas for the 2022-2023 season to launch the site in its new role. We welcome more ideas for creative and interesting content related to the site's varied history and desired role in the community.



SARATOGA
ASSOCIATES

Landscape Architects, Architects,
Engineers, and Planners, P.C.

amaze DESIGN

The reimagined Philipse Manor Hall SHS will offer:

Expanded Interpretation & Engagement

- Our Whole History Narrative
- New Exhibits & Tours
- New Programming and Events

Facility Improvements

- An elevator & four gender neutral restrooms
- Interior and exterior architectural restoration projects
- New electrical, information technology, security & fire detection systems
- Improved landscaping, lighting, parking and walkways
- New seating areas, plantings & shade trees
- Caretakers Cottage (Site Office) improvements including ADA access to first floor and a warming kitchen for site events



Major Reinvestment



**Parks, Recreation
and Historic Preservation**

Reimagining Philipse Manor Hall State Historic Site

Landscape Improvements

Garrett Jobson, RLA, Hudson Valley Capital District Manager

SARATOGA
ASSOCIATES

Landscape Architects, Architects,
Engineers, and Planners, P.C.



**Parks, Recreation
and Historic Preservation**

Philipse Manor Hall State Historic Site

An Evolving
Landscape

1800s



1850s



1868



1880s



1894



1899



1900



1934



1930s



1939



1952



NEW YORK
STATE OF
OPPORTUNITY.

**Parks, Recreation
and Historic Preservation**

Philipse Manor Hall State Historic Site

Existing Conditions



1. Warburton Ave View



2. Dock Street View



3. Side & Rear View



4. Existing Parking Lot

Philipse Manor Hall SHS Landscape Enhancements

- New widened entry from Warburton Ave.
- Walkway around Civil War monument & cannons with interpretive signs
- Spanish American War cannon moved off-site
- Restored fencing around site
- Improved pedestrian paths
- New plantings and shade trees
- New seating areas
- Event lawns
- Site Lightings
- Exterior lighting of Manor Hall
- Re-using bluestone walkways
- Improved drainage
- Visually screened maintenance area
- Improved parking area with bike rack



SARATOGA
ASSOCIATES

Reimagining Philipse Manor Hall State Historic Site

Building Improvements

Patrick Kozakiewicz, RA LEED AP, Senior Architect Hudson Valley Capital District

SARATOGA
ASSOCIATES

Landscape Architects, Architects,
Engineers, and Planners, P.C.



**Parks, Recreation
and Historic Preservation**

Philipse Manor Hall SHS Building Improvements

- Ensure the building is usable for **all** New Yorkers; in compliance with the American Disabilities Act.
- Repair and perform necessary maintenance that has been deferred. Restoration projects including architectural woodwork, masonry repointing, painting and cornice restoration.



SARATOGA
ASSOCIATES

Landscape Architects, Architects,
Engineers, and Planners, P.C.



WEST ELEVATION
PHILIPSE MANOR HALL SHS



SARATOGA ASSOCIATES

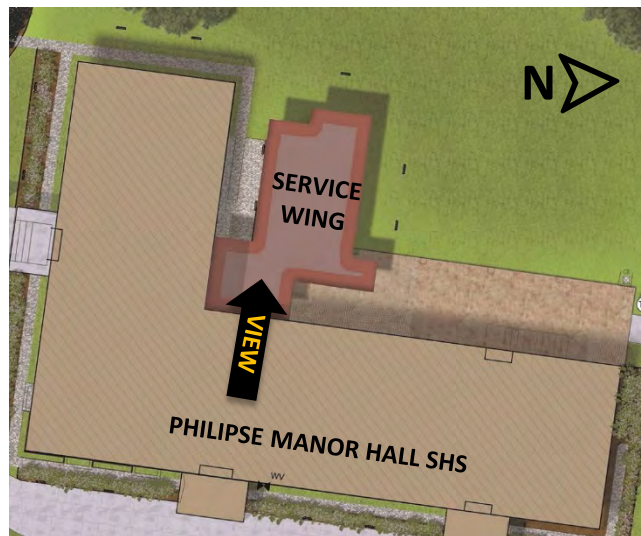
Landscape Architects, Architects,
Engineers, and Planners, P.C.



WEST ELEVATION
PHILIPSE MANOR HALL SHS



**Parks, Recreation
and Historic Preservation**



SARATOGA ASSOCIATES

Landscape Architects, Architects,
Engineers, and Planners, P.C.



SERVICE WING SECOND FLOOR INTERIOR. (LOOKING WEST)
PHILIPSE MANOR HALL SHS

(North) 2 Gender Neutral Restroom & Elevator

(South) GLASS CURTAIN WALL –
HIGHLIGHTS THE HISTORIC MASONRY OF PMH

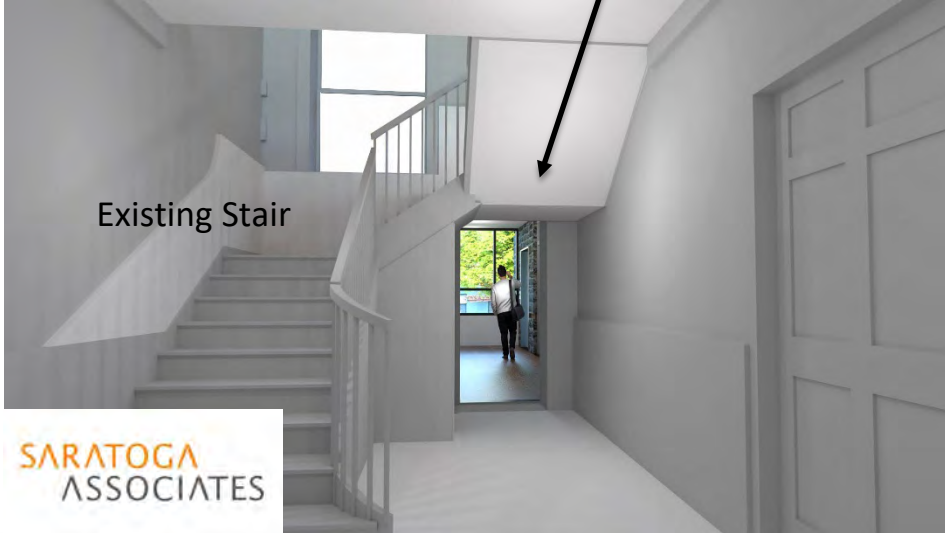


NEW YORK
STATE OF
OPPORTUNITY.

Parks, Recreation
and Historic Preservation



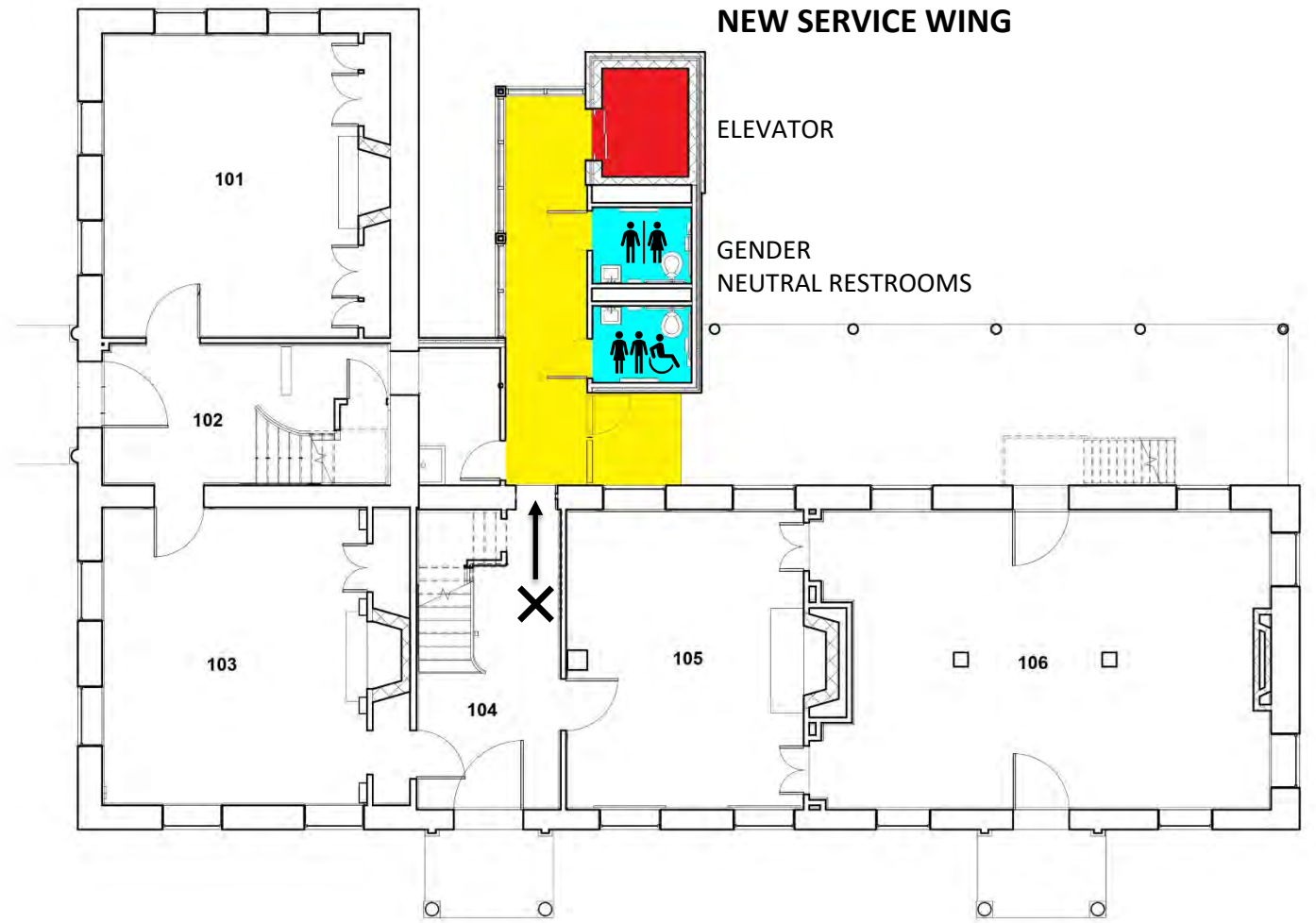
Existing door to wing



Existing Stair

SARATOGA
ASSOCIATES

✕ Passage to new
Service Wing



First Floor Plan



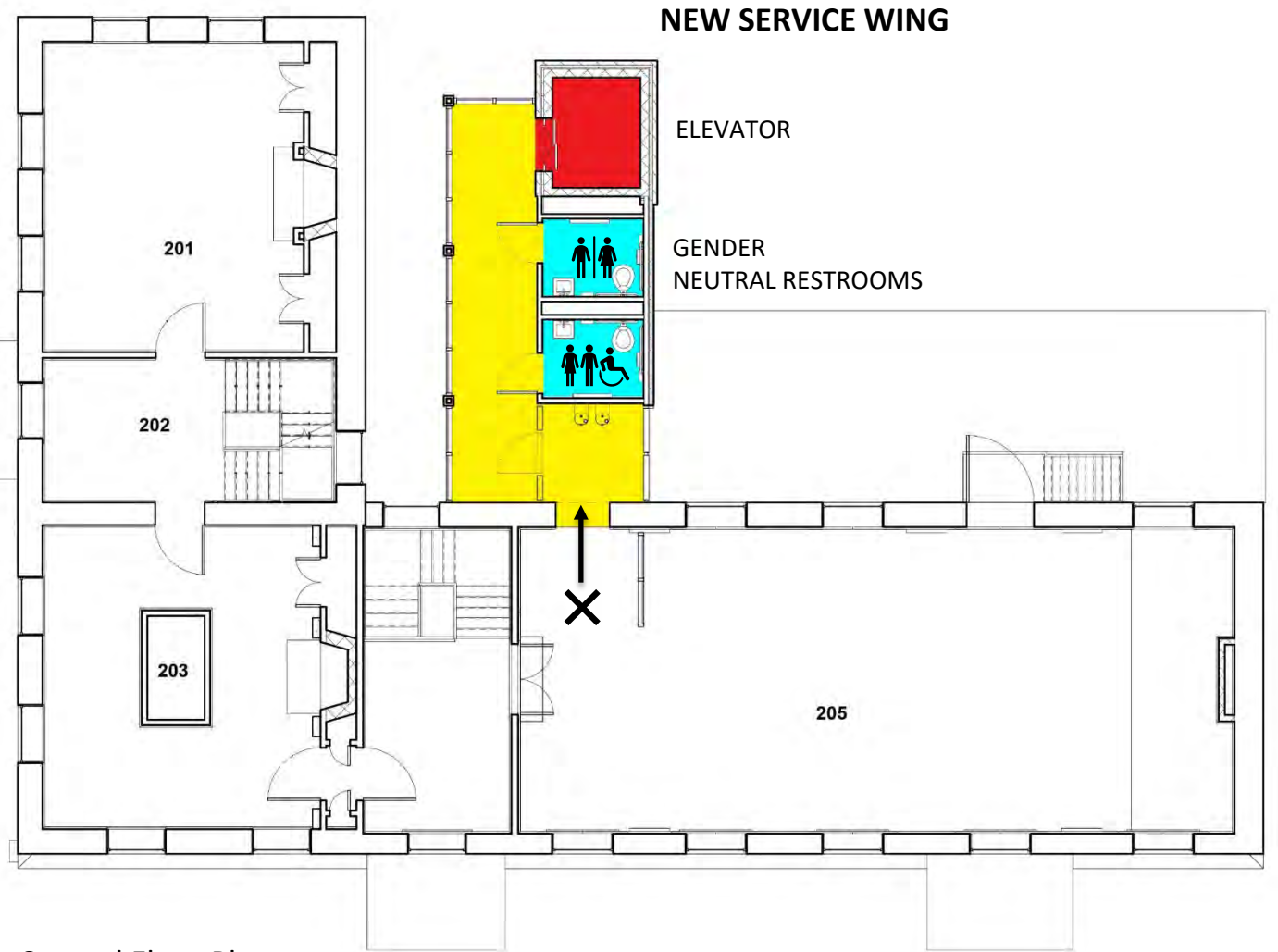
Existing Window
Non-historic Sash (1950s)

✗ Passage to new
Service Wing



SARATOGA
ASSOCIATES

Second Floor Plan

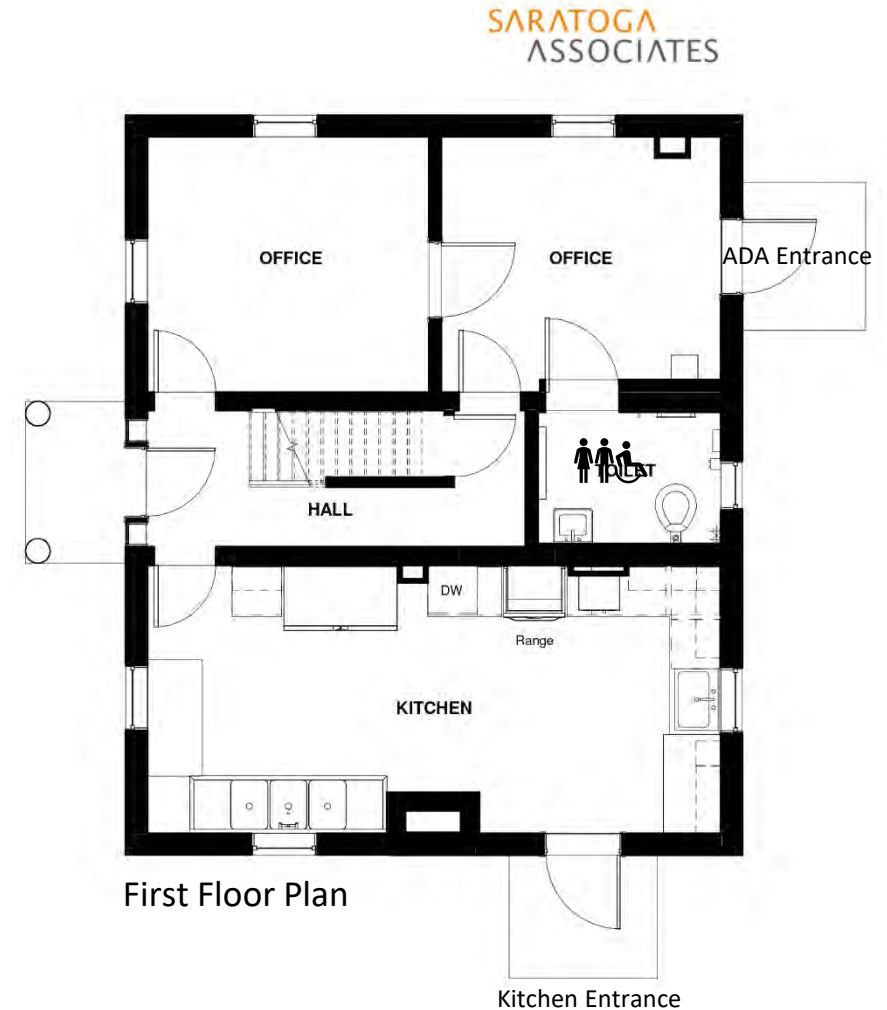


Cottage/Park Office Building Improvements

- Ensure access to Park Office for **all** New Yorkers; in compliance with the American with Disabilities Act.
- Provide site amenities including a new warming kitchen for site events.
- Electrical, information technology, security, fire and phone system upgrades.



Cottage /Park Office



Reimagining Philipse Manor Hall State Historic Site

New Exhibits & Proposed Programming

Kjirsten Gustavson, Interpretative Program Coordinator

Lavada Nahon, Interpreter of African American History

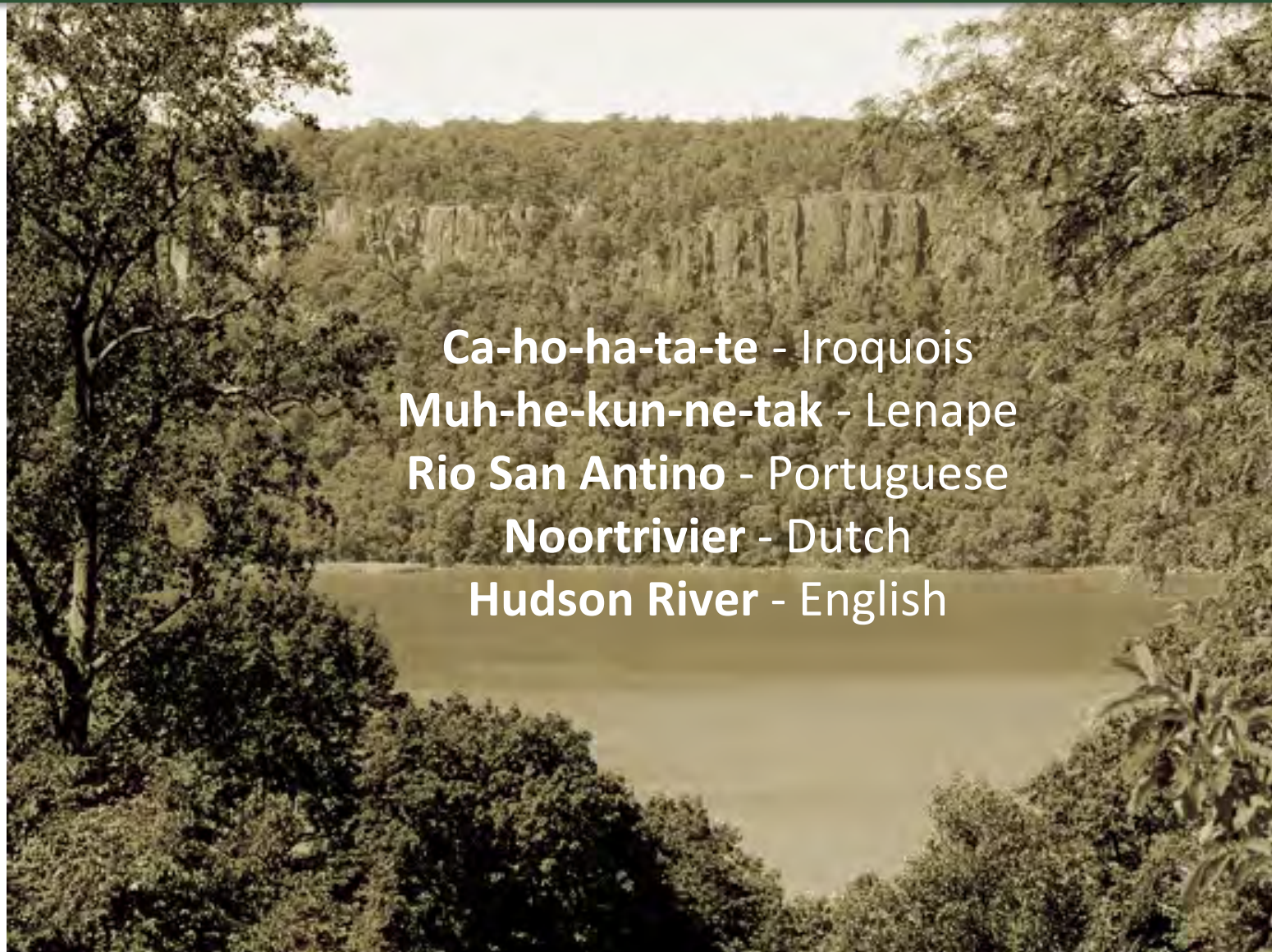
amaze DESIGN



**Parks, Recreation
and Historic Preservation**

Innovative Exhibits

Tell an inclusive story of this site—one that gives equal weight to different cultural groups that lived and worked here, including Native Americans, European settlers, Africans and people of African descent.



Ca-ho-ha-ta-te - Iroquois
Muh-he-kun-ne-tak - Lenape
Rio San Antino - Portuguese
Noortrivier - Dutch
Hudson River - English



**Parks, Recreation
and Historic Preservation**

Innovative Exhibits

Adopt a place-based approach that begins with the Native population and extends outward to encompass Manor holdings, the Hudson Valley, New Netherland, New York, and the worldwide locations.



1. Tickets & Gift Shop

2. Proposed Exhibits

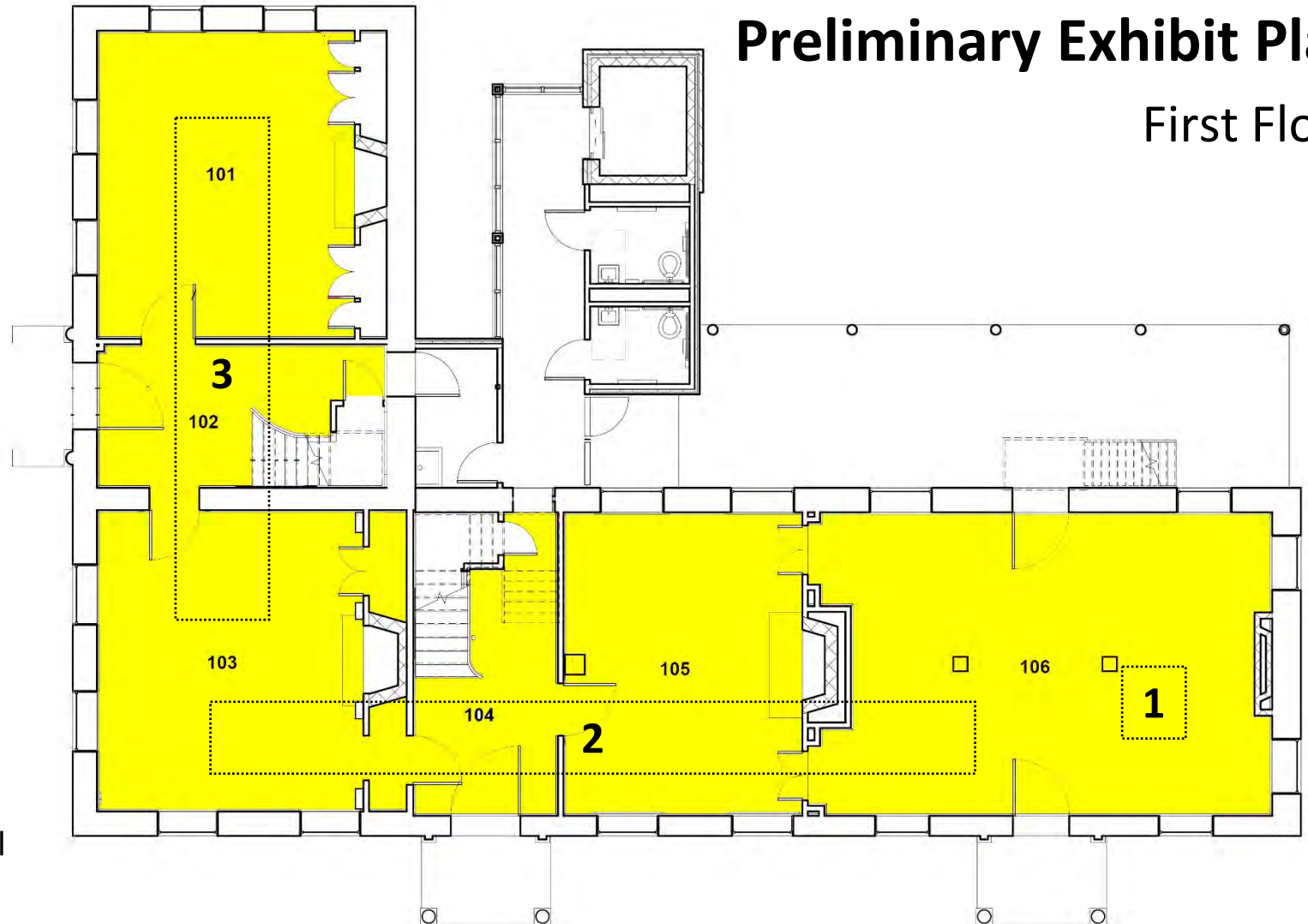
- The Populated Wilderness - Cultural Introduction
- Native American Presence
- Arrival of the Dutch and other Europeans, and Enslaved Africans
- The Building of New Netherland - Global Trade Network, Power & Wealth and Expansion (The Philipse family, enslaved people, tenant farmers, and Native Americans)

3. Proposed Exhibits

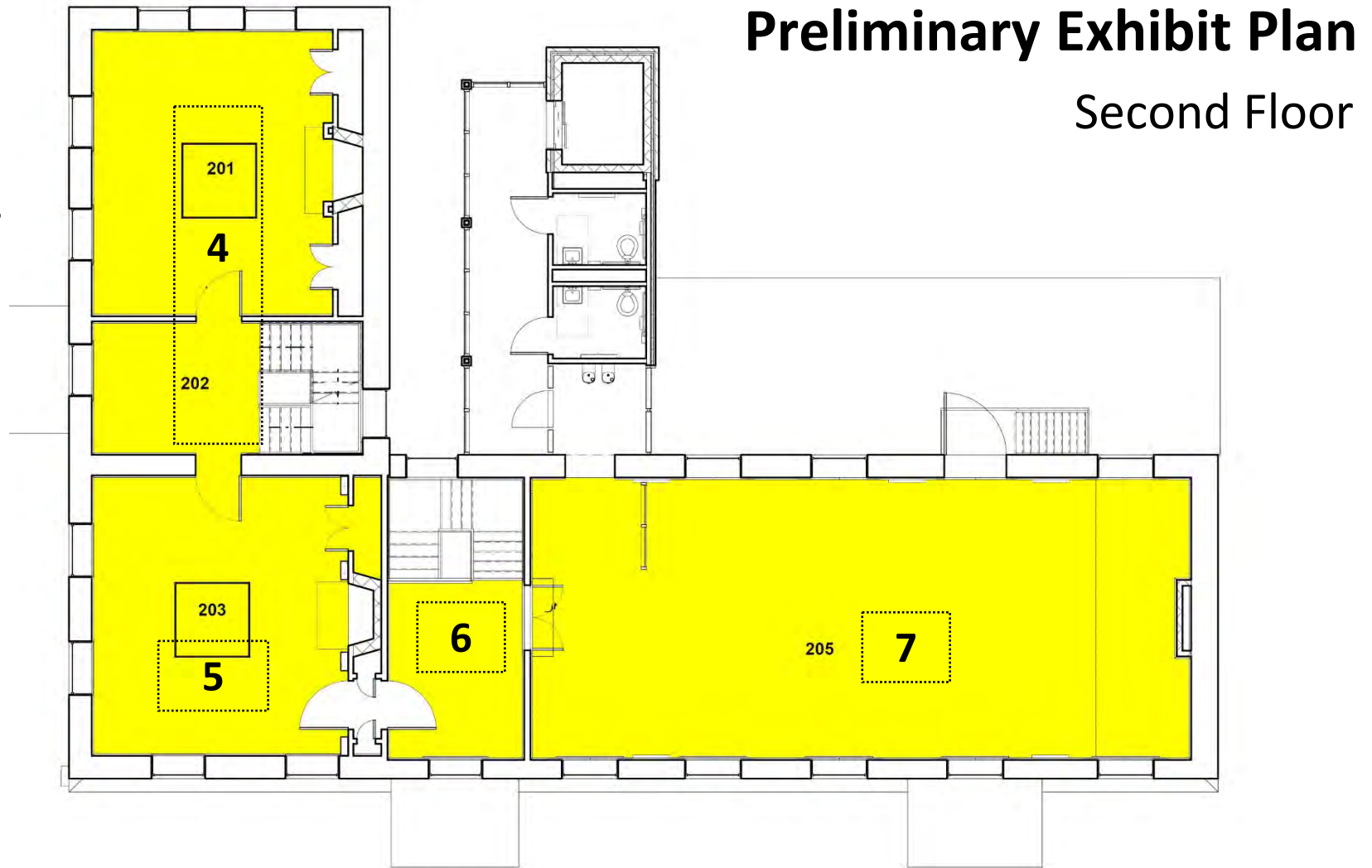
- Slave Society in New York and Beyond
- Philipse Family and International Trading
- Revolutionary War & becoming a state
- Free Settlements and the Changing Cultural Fabric of Yonkers & the Region

Preliminary Exhibit Plan

First Floor



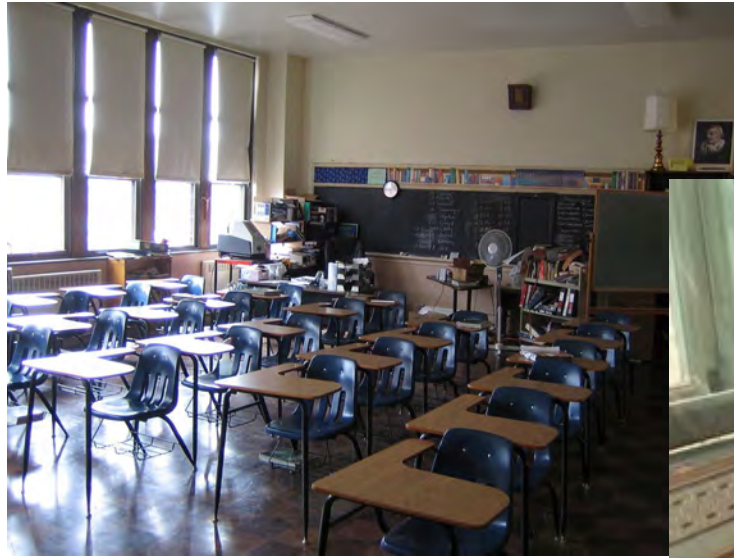
- 4. The Manor Hall as Civic Space & the First Restoration Period**
- 5. Special Exhibit - In the Dig: The Importance of Archaeology**
- 6. Special Exhibit Space**
- 7. Special Exhibit Space & Community Gallery**



Educational Resource

Continue to be a valuable educational resource for students by offering school programs and teacher resources.

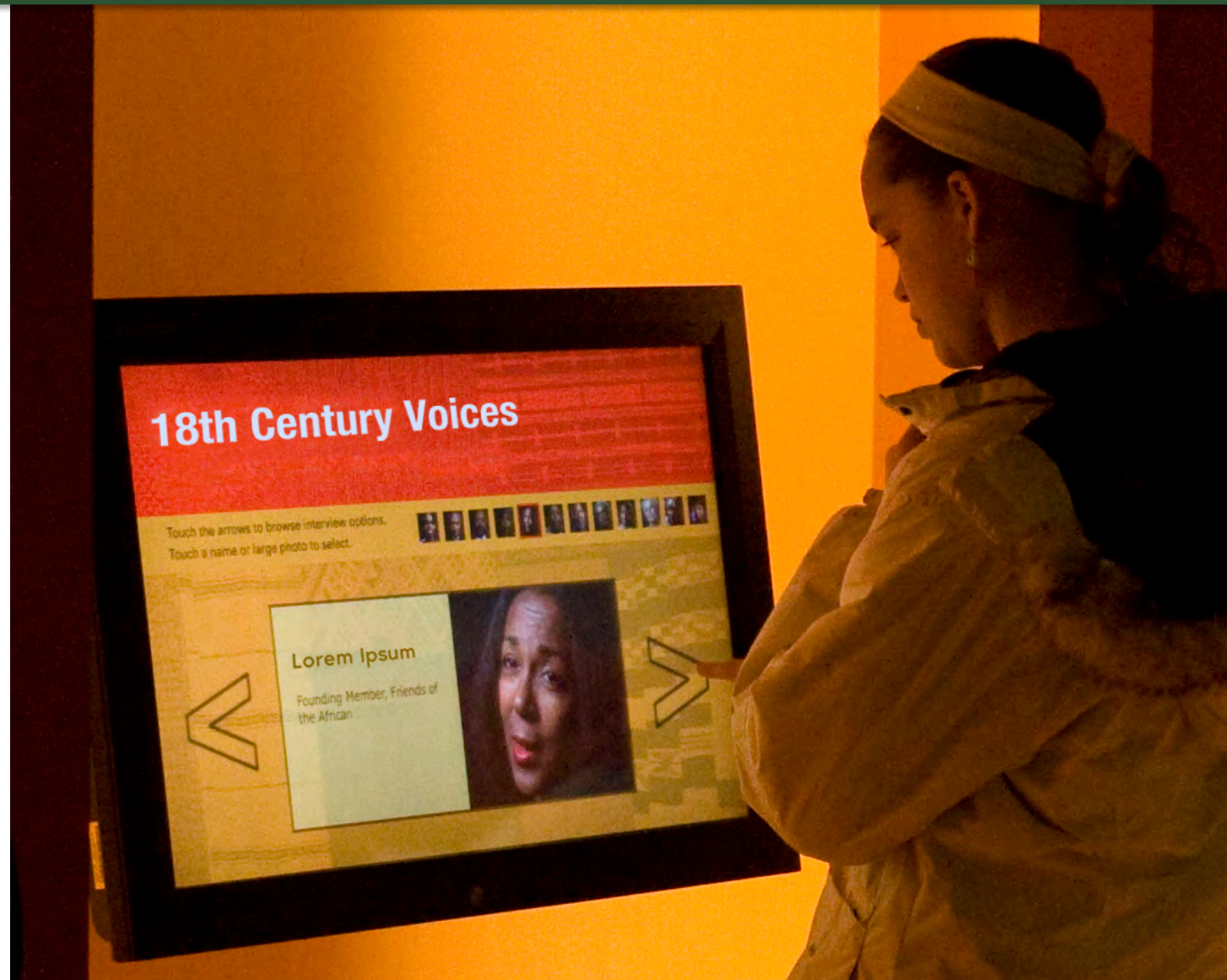
Ensure exhibit and program content is accessible and aligned with New York state curriculum standards.



Educational Resource

Create an online “virtual wing” which shares the latest, multicultural scholarship relating to PMH history.

Provide detailed educational materials (lesson plans, videos, activities) and links to partner organizations.



Engaging Programs

Provide a changing roster of workshops, discussions, performances & seasonal events.

Diversify offerings to attract a wider audience.

Give voice to different cultural perspectives.



Proposed Programs

Empower all New Yorkers to embrace their history, culture, and identity.

Instill a sense of pride in New York history and the contributions of its diverse inhabitants.

Homes of the Enslaved:
Pre-contact cultures of the Trans-Atlantic & India Ocean slave trade

How We Are Seen:
A dialogue about cultural portrayals in children's books

Helping History:
A training program for museum volunteers and others

Rhythms of the Life:
The drum in Native, African, & European cultures

Relearning History:
Native voices & current scholarship

What Did They Do?:
A program for children about three cultures during the colonial period

Storyteller's Circle:
Stories and folk tales from the cultures of colonial New York

The Tenants:
The Manor farmers & their role in global trade

African American Revolutionaries:
Soldiers and spies during the American Revolution

A Community Resource

Gothic Chamber

A flexible community meeting and gathering space

A special exhibits/community gallery



Opening Exhibit:

“Saved Places”
Photographs of
historic sites saved
through historic
preservation.



**Parks, Recreation
and Historic Preservation**

A Community Resource

Enhanced greenspace for community use, historic and public programming.



Reimagining Philipse Manor Hall State Historic Site

Next Steps

Linda Cooper, AICP, Taconic Regional Director



**Parks, Recreation
and Historic Preservation**

Project Schedule

- Building closed after May 8, 2021
- Grounds will be closed when construction begins late summer
- Site reopens summer 2022



Regulatory Review

- State Environmental Quality Review Act (SEQR) Review – *In Process*
- State Historic Preservation Office (SHPO) 14.09 Review – *In Process*
- SHPO – Archeological Testing and Review – *In Process*
- New York State Building Permit – Applied for after Construction Drawings are complete

Stay in Touch

If you have additional questions or feedback, please contact Daniel McEneny at daniel.mceneny@parks.ny.gov

If you would like to sign up for news alerts about the project, please [subscribe here](#) (*link provided in chat box*)

Please visit the Philipse Manor Hall page on the NYS Parks website for the latest project updates: <https://parks.ny.gov/historic-sites/philipsemanorhall/details.aspx>



Q&A

Please enter your questions into the Q&A box



**Parks, Recreation
and Historic Preservation**