

**Appendix III/IV.N**  
**Emergency Service Providers Correspondence**

**Letters Sent**  
(2021)

## 2021 RECIPIENTS

### **POLICE SERVICES**

Beacon Police Department  
Sands Frost, Chief of Police

Dutchess County Sheriff  
Sheldon H. Anderson, Sheriff

Fishkill Police Department  
Keith Dworkin, Chief of Police

NYS Parks Police  
David Szekeres, Lieutenant

NYS Police  
Major Kathryn M. Rohde, Troop K Commander

Putnam County Sheriff  
Robert L. Langley, Jr., Sheriff

Village of Cold Spring Police Department  
Larry Burke, Chief of Police

### **FIRE SERVICES**

Beacon Fire Department  
Gary Van Voorhis, Fire Chief

Cold Spring Fire Company No. 1  
Thomas Merrigan, Chief

Dutchess Junction Fire Department  
Harry Coris, Commissioner

Garrison Fire Department  
Jim Ericksen, Chief

Philipstown Fire Department (North Highlands Fire Department Engine Co. 1)  
Pat Scherer, Chief

Rombout Fire District  
John Lucariello, Chief

## **EMS PROVIDERS**

Beacon Volunteer Ambulance Corps  
Nicholas Scarchilli, Chief of Operations

Dutchess County Department of Emergency Response  
Dana Smith, Commissioner

Mobile Life Support Services  
Steven Longo, Manager

Philipstown Volunteer Ambulance Corps  
Chris Tobin, Chief

Putnam County Bureau of Emergency Services  
Robert Lipton, Commissioner

## **OTHER**

Hudson Highlands State Park Preserve  
Evan Thompson, Park Manager



**AKRF, Inc.**  
**Environmental, Planning, and Engineering Consultants**  
34 South Broadway  
Suite 300  
White Plains, NY 10601  
tel: 914 949-7336  
fax: 914 949-7559  
[www.akrf.com](http://www.akrf.com)

September 1, 2021

[RECIPIENT]

Re: Hudson Highlands Fjord Trail Emergency Services Information Request

Dear [Recipient]:

AKRF has been retained by The Town of Philipstown in conjunction with the New York State Office of Parks, Recreation and Historic Preservation (OPRHP) and Scenic Hudson to assess the impacts of the proposed Hudson Highlands Fjord Trail (Proposed Project/Trail/Linear Park) under the State Environmental Quality Review Act (SEQRA). The Proposed Project involves development of an approximately 14.5-mile long non-motorized shared-use Linear Park between the Village of Cold Spring (Putnam County, New York) and the City of Beacon (Dutchess County, New York) and partially running within or adjacent to the Hudson Highlands State Park Preserve (Park Preserve). Please refer to the attached graphic depicting a preliminary alignment for the Trail. The Proposed Project may also include improvements along NY State Route 9D, if necessary, to effectuate the Trail. Part of the Proposed Project will include the design and development of the Shoreline Trail, which will run between Dockside Park and Breakneck Ridge on the western (Hudson River) side of the Metro-North Railroad line.

AKRF, Inc. is currently preparing two reviews of the Proposed Project: a generic review of the impacts resulting from the development and operation of the entire Hudson Highlands Fjord Trail (i.e., the Study Area); and, a specific analysis of the impacts anticipated from the development and operation of the Shoreline Trail. To accurately reflect the impact of the Proposed Trail on emergency services providers, we respectfully request the following information from you or your department.

**EXISTING CONDITIONS INFORMATION:**

If available, please provide both *individual* location information and *total* numbers for the length of the study area.

1. Location, equipment and staffing at each of the stations (and sub-stations), which serve the Proposed Project Study Area. Please be as specific as possible.
2. From which of the above referenced stations do you dispatch personnel to distinct locations as presented on the map below. Please be as specific as possible. For example, “for emergency services calls to Segment 1.1 - Cold Spring Station to little Stony Point, we would dispatch personnel from XXXX station/substation.”
3. Please describe mutual aid agreements with adjacent municipalities, if any.
4. Please provide current response time to the Proposed Trail segments presented in the attached map. Please include responses to both individual locations and the total number of responses.

**PROJECTED/PROPOSED CONDITIONS INFORMATION:**

AKRF's conservative analysis assumes implementation of the Proposed Hudson Highlands Fjord Trail would increase visitation to the Study Area. When evaluating impact to your department due to the Proposed Trail, please do not include service to the existing hiking trails. Please only evaluate the impact as a result of the Proposed Project, using existing demand as a guide

1. Please estimate the anticipated change in personnel and equipment resulting from implementation of **just the Proposed Project**, to service the overall Trail and the Proposed Shoreline Trail specifically.
2. Please confirm there would be no anticipated change in response time to the proposed overall Trail and proposed Shoreline Trail specifically. If you anticipate a change in response time due to Project implementation, please estimate the change.
3. Please describe other potential/estimated impacts of **just the Proposed Project** on your department's services. Please consider only demand generated by the Proposed Project and not demand generated by the existing area trails.
4. Please describe anticipated changes to your department, independent of this Project, such as new equipment, increase/decrease in personnel or budget, or any other factors that may affect the future capacity to respond to emergencies.

We thank you in advance for your assistance. Your responses can be mailed or faxed to my attention, by 9/15/21 to the address and number above, or e-mailed to me at [jmencher@akrf.com](mailto:jmencher@akrf.com).

Sincerely,

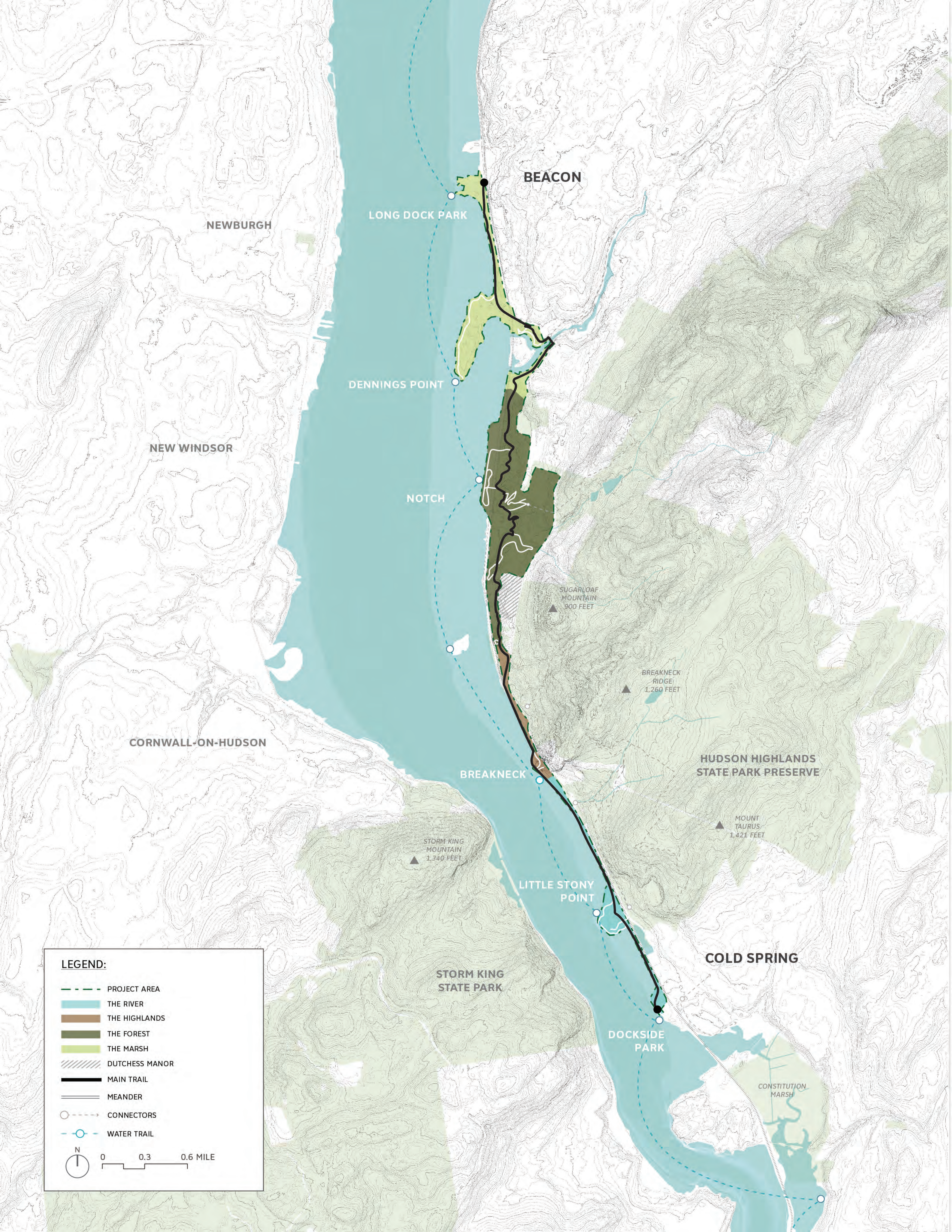


Jason S. Mencher, AKRF, Inc.,  
Planner

Attachment: Preliminary Draft Master Plan Trail Alignment

cc: Chris Robbins, AKRF, Inc. – Project Manager  
Nancy Stoner, OPRHP – Lead Agency





BEACON

NEWBURGH

LONG DOCK PARK

DENNINGS POINT

NEW WINDSOR

NOTCH

SUGARLOAF MOUNTAIN  
900 FEET

BREAKNECK RIDGE  
1,260 FEET

CORNWALL-ON-HUDSON

BREAKNECK

HUDSON HIGHLANDS STATE PARK PRESERVE

MOUNT TAURUS  
1,421 FEET

STORM KING MOUNTAIN  
1,340 FEET

LITTLE STONY POINT

COLD SPRING

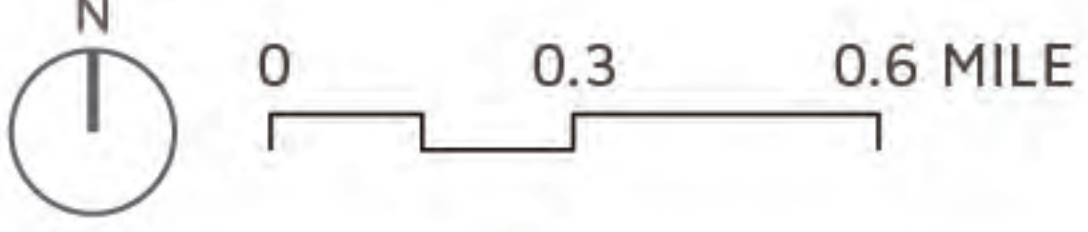
STORM KING STATE PARK

DOCKSIDE PARK

CONSTITUTION MARSH

**LEGEND:**

- PROJECT AREA
- THE RIVER
- THE HIGHLANDS
- THE FOREST
- THE MARSH
- DIAGONAL LINES DUTCHESS MANOR
- THICK BLACK LINE MAIN TRAIL
- THIN BLACK LINE MEANDER
- DASHED LINE WITH CIRCLES CONNECTORS
- DASHED BLUE LINE WITH CIRCLES WATER TRAIL





## **Responses Received**





# Beacon Volunteer Ambulance Corps, Inc.

P.O. Box 54, Beacon, New York 12508

PHONE: 845-831-4540

FAX: 845-831-0191

October 1

AKRF, Inc.  
34 South Broadway  
Suite 3i  
White Plains, NY 10611

To whom it may concern:

The Beacon Volunteer Ambulance Corps Inc is located in the City of Beacon at 1 Arquilla Drive Beacon, NY 12508. We own three Basic Life Support Ambulances, 1 Emergency Service Basic Life Support i Emergency Response Vehicle for emergency response to scenes, 1 Utility Terrain Vehicle with trailer for i mountain rescues. We staff one BLS ambulance i 4 hours a day, 7 days a week. Occasionally, we staff our i second ambulance during peak times of Monday through Friday 10am – 6pm.

We are dispatched by the Dutchess County Department of Emergency Response 911 Center and i respond to all calls from our 1 Arquilla Drive location.

We participate in the Dutchess County Mutual Aid agreement, which allows us and mutual aid units to i provide assistance to each other when resources are limited or unavailable for services areas.

We hope these best answers your questions. Feel free to reach out to us if you require any additional information.

Sincerely,

Nicholas Scarchilli, Chief of Operations





## **FIRE DEPARTMENT**

**13 South Avenue  
Beacon, New York 12508  
(845) 392-7408  
Chief Gary Van Voorhis  
gvanvoorhis@beaconny.gov**

Jason Mencher  
AKRF  
Environmental  
34 South Broadway  
Suite 300  
White Plains, NY

[www.akrf.com](http://www.akrf.com)

Attached is the answer to your questions.

Thank you,

A handwritten signature in blue ink that reads "Gary Van Voorhis".

Chief Gary van Voorhis





AKRF, Inc.  
 Environmental, Planning, and Engineering Consultants  
 34 South Broadway  
 Suite 300  
 White Plains, NY 10601  
 tel: 914 949-7336  
 fax: 914 949-7559  
 www.akrf.com

September 1, 2021

Gary Van Voorhis, Fire Chief  
 13 South Avenue,  
 Beacon, NY 12508

Re: Hudson Highlands Fjord Trail Emergency Services Information Request

Dear Chief Van Voorhis:

AKRF has been retained by The Town of Philipstown in conjunction with the New York State Office of Parks, Recreation and Historic Preservation (OPRHP) and Scenic Hudson to assess the impacts of the proposed Hudson Highlands Fjord Trail (Proposed Project/Trail/Linear Park) under the State Environmental Quality Review Act (SEQRA). The Proposed Project involves development of an approximately 14.5-mile long non-motorized shared-use Linear Park between the Village of Cold Spring (Putnam County, New York) and the City of Beacon (Dutchess County, New York) and partially running within or adjacent to the Hudson Highlands State Park Preserve (Park Preserve). Please refer to the attached graphic depicting a preliminary alignment for the Trail. The Proposed Project may also include improvements along NY State Route 9D, if necessary, to effectuate the Trail. Part of the Proposed Project will include the design and development of the Shoreline Trail, which will run between Dockside Park and Breakneck Ridge on the western (Hudson River) side of the Metro-North Railroad line.

AKRF, Inc. is currently preparing two reviews of the Proposed Project: a generic review of the impacts resulting from the development and operation of the entire Hudson Highlands Fjord Trail (i.e., the Study Area); and, a specific analysis of the impacts anticipated from the development and operation of the Shoreline Trail. To accurately reflect the impact of the Proposed Trail on emergency services providers, we respectfully request the following information from you or your department.

**EXISTING CONDITIONS INFORMATION:**

If available, please provide both *individual* location information and *total* numbers for the length of the study area.

1. Location, equipment and staffing at each of the stations (and sub-stations), which serve the Proposed Project Study Area. Please be as specific as possible. 13 SOUTH AVE. ENGINE AND LADDER TRUCKS
2. From which of the above referenced stations do you dispatch personnel to distinct locations as presented on the map below. Please be as specific as possible. For example, "for emergency services calls to Segment 1.1 - Cold Spring Station to little Stony Point, we would dispatch personnel from XXXX station/substation." BEACON ONLY RESPONDS TO BEACON ADDRESSES. UNLESS REQUESTED BY OTHERS.
3. Please describe mutual aid agreements with adjacent municipalities, if any. ATTACHED



- 4. Please provide current response time to the Proposed Trail segments presented in the attached map. Please include responses to both individual locations and the total number of responses.

UNDER 4 MINUTES RESPONSE

**PROJECTED/PROPOSED CONDITIONS INFORMATION:**

AKRF’s conservative analysis assumes implementation of the Proposed Hudson Highlands Fjord Trail would increase visitation to the Study Area. When evaluating impact to your department due to the Proposed Trail, please do not include service to the existing hiking trails. Please only evaluate the impact as a result of the Proposed Project, using existing demand as a guide

- 1. Please estimate the anticipated change in personnel and equipment resulting from implementation of **just the Proposed Project**, to service the overall Trail and the Proposed Shoreline Trail specifically.
- 2. Please confirm there would be no anticipated change in response time to the proposed overall Trail and proposed Shoreline Trail specifically. If you anticipate a change in response time due to Project implementation, please estimate the change. *NO CHANGE*
- 3. Please describe other potential/estimated impacts of **just the Proposed Project** on your department’s services. Please consider only demand generated by the Proposed Project and not demand generated by the existing area trails. *MORE REQUESTS EMS INCIDENTS*
- 4. Please describe anticipated changes to your department, independent of this Project, such as new equipment, increase/decrease in personnel or budget, or any other factors that may affect the future capacity to respond to emergencies. *COULD USE AN ATV FOR FIRE SERVICES*

We thank you in advance for your assistance. Your responses can be mailed or faxed to my attention, by 9/15/21 to the address and number above, or e-mailed to me at [jmencher@akrf.com](mailto:jmencher@akrf.com).

Sincerely,

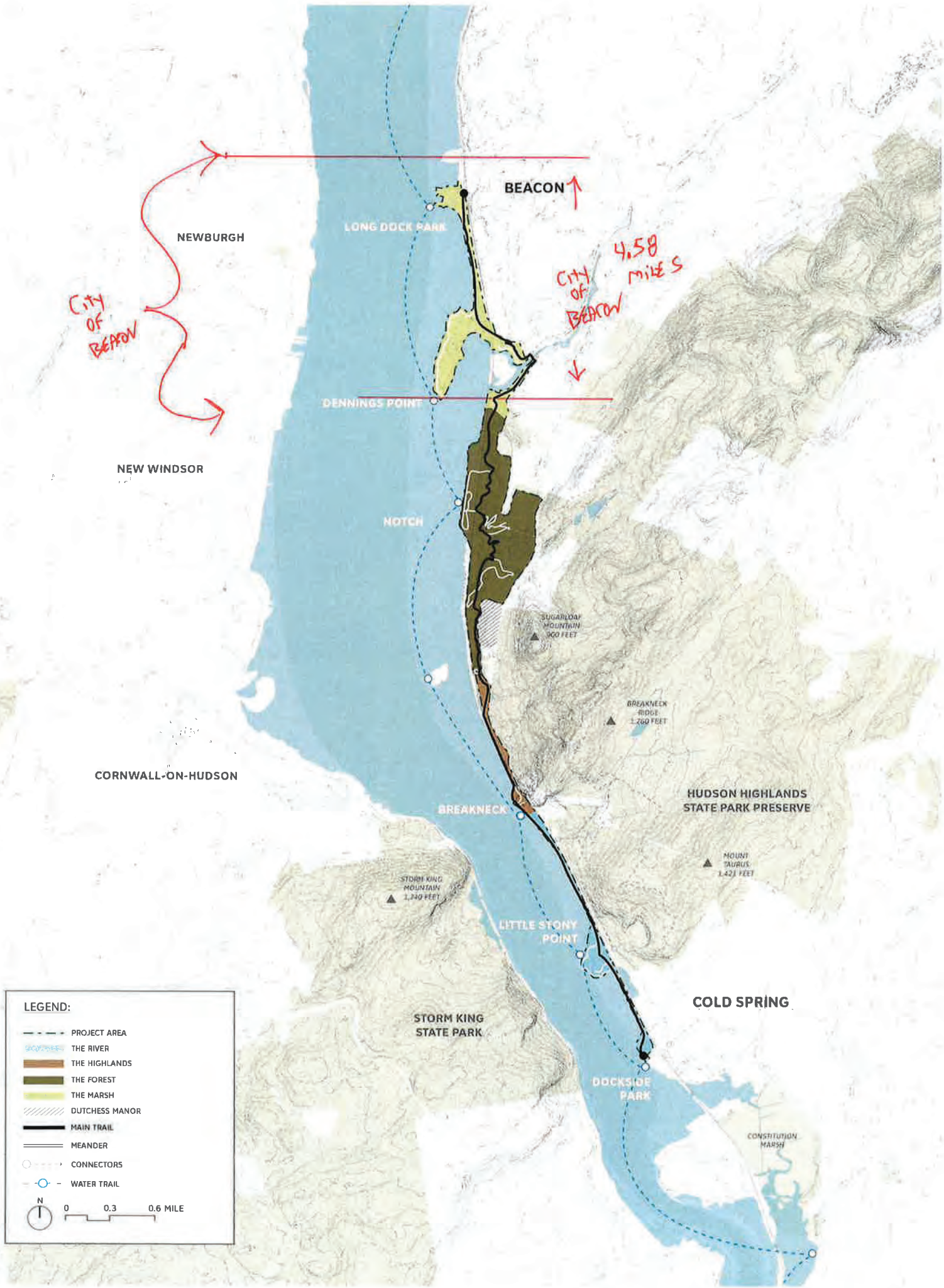


Jason S. Mencher, AKRF, Inc.,  
Planner

Attachment: Preliminary Draft Master Plan Trail Alignment

cc: Chris Robbins, AKRF, Inc. – Project Manager  
Nancy Stoner, OPRHP – Lead Agency



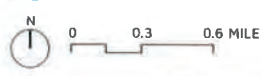


City of BEAROV

4.58 miles  
City of BEAROV

**LEGEND:**

- PROJECT AREA
- THE RIVER
- THE HIGHLANDS
- THE FOREST
- THE MARSH
- DUTCHESS MANOR
- MAIN TRAIL
- MEANDER
- CONNECTORS
- WATER TRAIL





Trail Owner:  
City of Beacon, NYS, Scenic Hudson  
Total Trail Length:  
4.58 Miles

# Beacon Riverfront Trail Map

<http://www.cityofbeacon.org/Government/parksrecreation.htm>





THE DUTCHESS COUNTY OFFICE OF EMERGENCY RESPONSE  
FIRE ~ RESCUE ~ EMS  
MUTUAL AID PLAN FOR THE COUNTY OF DUTCHESS  
RECOMMENDED FOR ADOPTION BY:  
DUTCHESS COUNTY FIRE AND SAFETY ADVISORY BOARD



ORIGINAL DATED JANUARY 15, 1955

Revised: August 15, 1977

Revised: January 16, 1984

Revised: January 22, 1990

Revised: January 2004

Revised: April 2010

Submitted By Dutchess County Emergency Response Coordinator John Murphy

Date: \_\_\_\_\_

Adopted by Dutchess County Legislature

Date: \_\_\_\_\_

Resolution no. \_\_\_\_\_ Dutchess County Mutual Aid Plan

The \_\_\_\_\_ committee offers the following resolution and move for its adoption as the Dutchess County Mutual Aid Plan. A copy of the resolution is attached to and included in this document.

Approved by Dutchess County Executive -- William R. Steinhaus

Date: \_\_\_\_\_

Submitted to the New York State Fire Mobilization Plan by the New York State Office of Fire Prevention and Control

Date: \_\_\_\_\_

SUBMITTED TO THE

New York State Department of Health Bureau of Emergency Medical Services

Filing Date \_\_\_\_\_

SUBMITTED TO THE

Hudson Valley Regional Emergency Medical Services Council

Filing Date \_\_\_\_\_



**TABLE OF CONTENTS**

<b>TITLE</b>	<b>SECTION</b>
<b>MUTUAL AID PLAN OUTLINE DIAGRAM</b>	1
<b>PURPOSE</b>	2
<b>DEFINITION OF FIRE DEPARTMENTS, FIRE DISTRICTS, AND EMS AGENCIES</b>	3
<b>EXTENT AND LIMIT OF PARTICIPATION WITH OTHER COUNTIES</b>	4
<b>AUTHORIZATION</b>	5
<b>ADMINISTRATION</b>	6
<b>OBJECTIVE</b>	7
<b>STANDARDIZATION OF EMERGENCY SERVICES</b>	8
<b>AMENDMENTS</b>	9
<b>ANNUAL REVIEW</b>	10
<b>ENTERING AND PARTICIPATING IN THE PLAN</b>	11
<b>REQUESTS FOR MUTUAL AID</b>	12
<b>LIABILITY RESPONSIBILITY AND REIMBURSEMENT</b>	13
<b>INCIDENT COMMAND AND MANAGEMENT</b>	14
<b>PARTICIPATING AGENCY COMPLIANCE</b>	15
<b>MUTUAL AID REVIEW BOARD</b>	16
<b>PARTICIPATING AGENCY WITHDRAWAL FROM PLAN</b>	17
<b>LINE OF AUTHORITY</b>	18
<b>BATTALION &amp; DEPUTY COORDINATORS</b>	19
<b>STATUS OF PARTICIPATING AGENCIES</b>	20
<b>MULTIPLE CASUALTY INCIDENT (MCI)</b>	21
<b>INVENTORY OF PARTICIPATING AGENCIES</b>	22
<b>COORDINATION WITH OTHER SERVICES FOR EMERGENCY RELATED EVENTS</b>	23
<b>TRAINING</b> - Fire ~ Rescue - EMS	24
<b>CRITICAL INCIDENT STRESS TEAM (CIRT)</b>	25
<b>DUTCHESS COUNTY FIRE POLICE RESPONSE TEAM</b>	26
<b>COMPLIANCE WITH THE DUTCHESS COUNTY RADIO PLAN</b>	27
<b>DUTCHESS COUNTY EMERGENCY RESPONSE COMMUNICATIONS POLICY</b>	28

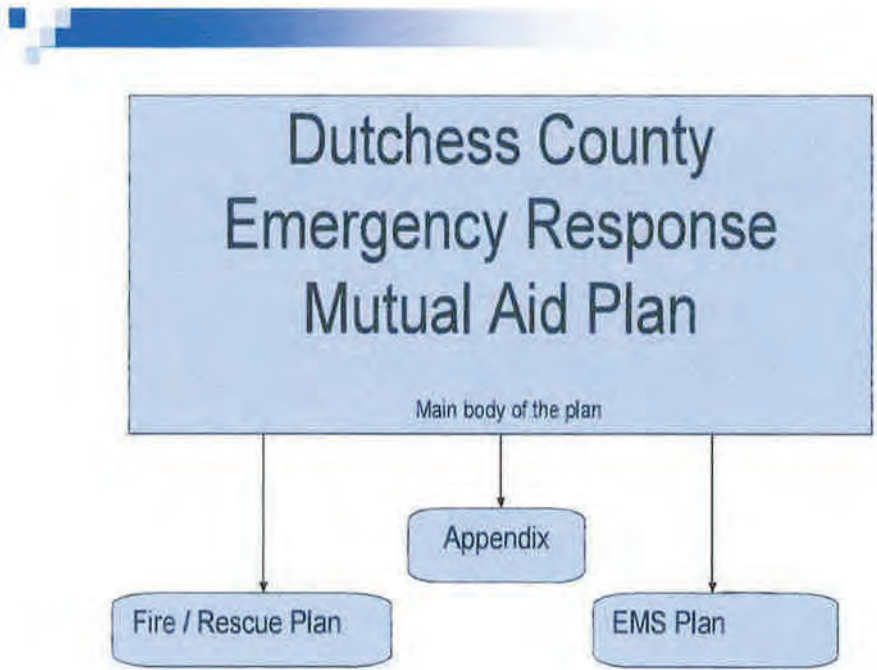
**Appendix**

<b>Title</b>	<b>Section</b>
<b>Department of Emergency Response Organization Chart</b>	<b>A - 1</b>
<b>Participating agencies</b>	<b>A - 2</b>
<b>Communications Center and Radio Plan</b>	<b>A - 3</b>
<b>Multiple Casualty Incident Plan</b>	<b>A - 4</b>
<b>Resolution document for participating agencies</b>	<b>A - 5</b>
<b>Dutchess County Charter</b>	<b>A - 6</b>
<b>Dutchess County Code For Civil Defense/Emergency Management</b>	<b>A - 7</b>
<b>Mutual Aid Plan Revision Committee</b>	<b>A - 8</b>
<b>Dutchess County Arson Control Program</b>	<b>A - 9</b>
<b>References</b>	<b>A - 10</b>



**1. MUTUAL AID PLAN OUTLINE**

**DUTCHESS COUNTY  
EMERGENCY RESPONSE  
FIRE ~ RESCUE ~ EMS  
MUTUAL AID PLAN COMPONENT OUTLINE**





## **2. PURPOSE**

The purpose of this plan is to provide assistance and protection for all Dutchess County communities in the case of fire or other emergency.

Local mutual aid plans operating exclusive of the Dutchess County Mutual Aid Plan other than those required by New York State Law, are not permitted

## **3. DEFINITION OF FIRE DEPARTMENTS, FIRE DISTRICTS, EMS AGENCIES**

For the purpose of definition - the term participating agencies shall be used throughout this document.

The terminology Participating Agencies as used in this plan shall include all ambulance and rescue squads, fire police, and other units of fire companies and fire departments, whether incorporated or not, and shall mean and include any firefighting unit as may be defined or described in section 209 of the NYS General Municipal Law.

New York State and Federal Agencies may participate in the plan as federal and state laws allow

## **4. EXTENT AND LIMIT OF PARTICIPATION WITH OTHER THE COUNTIES**

There is no formal agreement with the surrounding Counties of Dutchess. Local reciprocal assistance is in accordance with section 209 of the NYS General Municipal law. All requests for assistance will be routed through the Dutchess County 9-1-1 Communications Center.

Extent and limit of participation with adjacent counties mutual aid is provided and received from adjacent counties through their respective county fire control centers under the direction of their County Fire Coordinators or legally appointed Deputies. All requests for assistance shall be routed through the Dutchess County 9-1-1 Communications Center.

## **5. AUTHORIZATION**

A. Mutual aid plans are authorized under the laws of the State of New York. All present and future participating agencies in Dutchess County organized pursuant to law may elect to participate in this plan.

B. Participating Agencies with the possibility for the need for mutual aid assistance in the time of fire or other emergency where the services of equipment and/or personnel would be required, the cities, villages, districts, fire companies, and fire departments have pledged their equipment and personnel agree, and recognize their contractual obligation to comply with this plan.

## **6. ADMINISTRATION**

The administration of the Dutchess County Mutual Aid Plan shall be the duty of the Dutchess County Emergency Response Coordinator or his designee.

## **7. OBJECTIVE**

Definition of mutual aid is the organized, supervised, coordinated, cooperative, reciprocal assistance in which personnel, equipment, and physical facilities of all participating agencies regardless of type or size, are utilized for fire or other emergency throughout the County of Dutchess and adjacent areas where reciprocal agreements exist.



## **8. STANDARIZATION OF EMERGENCY SERVICES**

When coordinating and implementing a multi-jurisdictional, multi-dimensional plan such as this, there are standard assumptions made such as:

- Each geographic area, (City, Town, Village, District, etc.), shall have sufficient emergency service assets to respond to routine calls.
- Each agency should use a similar formula to assess their needs; the following information should be considered: population, call volume and type, geography, traffic, hazards, and weather.

The Dutchess County Department of Emergency Response is continually working toward a standardized emergency service asset allocation provided by each authority having jurisdiction. This standard approach will allow all agencies regardless of type, commercial, municipal, or volunteer, to provide day-to-day emergency service to its coverage areas and mutual aid coverage to its neighbors.

## **9. AMENDMENTS**

Amendments to this plan may be made yearly and will follow this procedure:

1. The amendment is to be prepared by the Emergency Response Coordinator and members of his staff,
2. The amendment is then presented to the Dutchess County Fire and Safety Advisory Board for review and comment,
3. The amendment is then presented by the Emergency Response Coordinator to the following agencies or committees:
  - a. The corresponding governing bodies for the participating agencies,
  - b. Any appropriate New York State and Federal agencies,
  - c. New York State Office of Fire Prevention and Control,
4. Forwarded to Dutchess County Attorney and Executive's Offices for review,
5. Approved by resolution from the participating agency's governing board,
6. Adopted by Dutchess County Legislature,
7. Approved by Dutchess County Executive,
8. Admitted into the NYS Fire Mobilization and Mutual Aid Plan of the State of New York Office of Fire Prevention and Control,
9. Submitted to the Hudson Valley Regional Emergency Medical Services Council, and
10. Submitted to the NYS Department of Health's Bureau of Emergency Medical Services.

## **10. ANNUAL REVIEW**

A. Each year this plan shall be reviewed by the Emergency Response Coordinator and the Dutchess County Fire and Safety Advisory Board. Any additions, deletions and or corrections can be made by following the above approval process for the articles affected.

B. The mutual aid plan is to be reviewed for updates in its entire form on a five year cycle.

## **11. ENTERING AND PARTICIPATING IN THE PLAN**

A. There shall also be filed with the Emergency Response Coordinator a copy of a resolution adopted by the governing body of each participating agency (city, village or by the Board of Fire Commissioners or other governing boards having jurisdiction over the Fire Department). The resolution shall indicate if any restrictions exist against "outside service" by the participating agency within the meaning of section 209 of the NYS General Municipal Law. This would also affect the power of such agency to participate in the plan and the governing board recognizes and accept their financial responsibility pursuant to section 209 subdivisions 2,3 and 4 of the NYS General Municipal Law.



- B. Any participating agency may restrict participation in the plan if a participating agency is restricted by section 209 of NYS General Municipal Law from providing mutual aid. The governing body shall adopt a resolution that outlines the restrictions in detail. A copy of the resolution shall be provided to the to the Emergency Response Coordinator.
- C. Extent and Limit of Participation with neighboring State's, Counties, or local governments  
At present there is no formal agreement with this County and Emergency Services from the neighboring States of Connecticut or Massachusetts. Local reciprocal assistance, if any, must be arranged between the local agencies / municipalities. A copy of such agreements must be filed with the Dutchess County Emergency Response Coordinator. All requests for assistance are to be routed through the Dutchess County 9-1-1 Communications Center
- D It is understood that some departments within Dutchess County operate certain functions of fire department operations exclusive of the Dutchess County Department of Emergency Response. Examples are, but not limited to: radio systems and dispatching, fire investigation, hazardous materials response, and training. It is not the intent of this document to replace systems that are in place and serve these departments well. However, if the fire departments operating the above described functions find the need to operate within the parameters of this plan then those departments are required to conform to the rules, regulations, and procedures established by the Dutchess County Mutual Aid Plan.

## 12. REQUESTS FOR MUTUAL AID

- A. Each participating agency may request assistance from another agency pursuant to the provisions of this plan. Requests are to be routed through the Dutchess County 9-1-1 Communications Center.
- B. The request by the incident commander in charge of any fire or other emergency.
- C. The pre-defined response to any building, area, and or district by planned first alarm assignment, greater alarm assignment, or preplanned replacement of apparatus.
- D. A request by the Dutchess County 9-1-1 Communications Center (Emergency Response Coordinator or his designee) to respond to or stand by for any situation that results in a shortage of apparatus and/or equipment in a geographical area

Note: the 9-1-1 Communications Center (Emergency Response Coordinator or his designee) will generally not dispatch mutual aid without first contacting an authorized representative (IC) of the host department.

## 13. LIABILITY RESPONSIBILITY AND REIMBURSEMENT

### Insurance

It shall be the responsibility of any participating agency responding outside of their primary response area to maintain appropriate insurance coverage as required by law. Each agency should insure their personnel and vehicle(s) regardless of their location, or location of the call.

### Hold Harmless

New York State General Municipal Law 209 entitled Outside Service by local fire departments, companies, ambulance districts, airport crash-fire-rescue units, states the following :

- A. Members of participating agencies have the same immunities and privileges on a mutual aid call that they have on a call within their own jurisdiction.
- B. Participating agencies are liable for the negligence of their personnel on a mutual aid call.
- C. Participating agencies may make a claim to the agency that requested the call for assistance “for any loss or damage to, or expense incurred in the operation of fire apparatus or other equipment answering a call for assistance and the cost of any materials used in connection with such call, shall be a charge against and paid by the agency..... which issued the call for assistance”.



## **14. INCIDENT COMMAND AND MANAGEMENT OF INCIDENTS**

The Dutchess County Emergency Response staff will operate via the recognized incident command system. Use of the Incident Command System is required to ensure the safety and welfare of all personnel involved and promotes control of potentially dangerous operations.

## **15. PARTICIPATING AGENCY COMPLIANCE**

Each participating agency shall make every effort to respond to any call for assistance from another participating agency pursuant to the provisions of this plan. There shall be a hearing with the Dutchess County Emergency Response Coordinator in the event a participating agency refuses to respond to a call for assistance. The governing board of and the Chief of the participating agency that failed to respond to the call will receive a notice from the Dutchess County Department of Emergency Response stating the time and date of the hearing before the Emergency Response Coordinator. The notice will be sent certified mail, return receipt requested. When possible, the governing board and the Chief will be given a minimum of ten (10) business days advance notice of the hearing date and time. Representatives of the participating agency and other interested parties will have the opportunity to advise the Emergency Response Coordinator of their position. The Emergency Response Coordinator shall render a decision in writing within a reasonable period of time after the hearing. The governing board of the participating agency shall have the right to appeal the Emergency Response Coordinator's decision to the Mutual Aid Plan Review Board within ten (10) business days of receipt of the Coordinator's decision.

The Emergency Response Coordinator has the discretion to temporarily suspend a participating agency from the Mutual Aid Plan pending a hearing.

## **16. MUTUAL AID PLAN REVIEW BOARD**

A. The Dutchess County Mutual Aid Review Board shall consist of seven (7) members. Two members shall be from the Dutchess County Fire and Safety Advisory Board, with one acting as Chairman of the Review Board, two from the Dutchess County EMS Council, and two from the Association of Fire Districts, and one from the Dutchess County Chief's Council. Each member shall be appointed by their respective organizations for a term of one year. Appointments shall be made in December for the following year with each term limited to January 1 through December 31. The names of the review board members shall be provided to the Dutchess County Emergency Response Coordinator in January of each year or as often as necessary or required.

## **17. PARTICIPATING AGENCY WITHDRAWAL FROM THE PLAN**

A. Any participating agency may elect to withdraw from this plan by adopting a resolution to such effect. Such withdrawal shall become effective 45 calendar days after the filing of such notice with the Dutchess County Emergency Response Coordinator. The Emergency Response Coordinator shall notify the Dutchess County Fire and Safety Advisory Board, the Dutchess County Executive, and all participating agencies of the agency withdrawal from this plan.

B. Such withdrawal from this plan will result in the suspension of mutual aid. Such withdrawal shall remain in effect until reinstated by resolution as defined by section 209 of the NYS General Municipal Law.

## **18. LINE OF AUTHORITY**

The Emergency Response Coordinator shall have a list of those persons who can act in his stead on file with the Department of Emergency Response administrative office in the event he is unable to fulfill his responsibilities that are outlined in this plan due to absence or illness.



## **19. FIRE-RESCUE BATTALION COORDINATORS, EMS COORDINATORS, AND DEPUTY COORDINATORS**

Battalion Coordinators, Deputy Coordinators and Deputy EMS Coordinators are directly responsible to the Dutchess County Emergency Response Coordinator. Additional details of the areas of responsibility, and chain of command are determined by the County Emergency Response Coordinator and are found in the appendix section organization chart of this document.

- Battalion Coordinator
- Deputy Coordinator – Haz Mat
- Deputy Coordinator - EMS
- Deputy Coordinator - FID
- Deputy Coordinator - Training

## **20. STATUS OF PARTICIPATING AGENCIES**

A. Maintenance of individuality. Each agency in this plan shall retain its internal command and individuality.

B. Authority of requesting Incident Commander

1. A requesting Incident Commander is one who requests mutual aid for his/her agency in accordance with this plan.
2. The chain of command at a fire or other emergency remains with the agency requesting mutual aid.

C. If any state or federal institution, private fire brigade, or ambulance service requires aid for fire or other emergency, the fire department in whose jurisdiction the institution or agency lies shall be notified through the Dutchess County 9-1-1 Communications Center. The local fire department will respond with at least one piece of equipment so to be officially on the scene. Any and all mutual aid will be the responsibility of the local Fire Department. Incident Command of the incident will lie with the local fire department's officer or individual in charge who in turn will coordinate with the personnel from the institution or agency.

D. Federal agencies are allowed, under federal regulations to have reciprocal agreements with other participating agencies. Mutual aid assistance losses or damages are recoverable under the Federal Fire Prevention and Control Act of 1974. (15USC2210)

## **21. MULTIPLE CASUALTY INCIDENT (MCI)**

Refer to the Dutchess County Department of Emergency Response Multiple Casualty Incident guideline. This attachment provides details of the responsibility of the incident commander declaring an MCI. In addition, it details the actions taken and resources available through the Dutchess County Department of Emergency Response

## **22. INVENTORY OF PARTICIPATING AGENCIES**

Inventory records of apparatus and equipment for all participating agencies shall be located at the Dutchess County 911 Communications Center and a copy provided to the Battalion Coordinators.

## **23. COORDINATION WITH OTHER SERVICES FOR EMERGENCY RELATED EVENTS**

Inter-service coordination other services: the Dutchess County Emergency Response Coordinator shall develop and establish agreements, formal or informal, with the appropriate emergency, public service organizations, and private industry where necessary. Information including emergency and business contact numbers, equipment inventories, personnel listings, and other pertinent information shall be maintained at the Dutchess County 9-1-1 Communications Center. Normal procedure is to handle requests for these services through the Dutchess County 9-1-1 Communications Center.



## **24. TRAINING DIVISION**

### **A. Fire – Rescue**

The courses of the New York State Field Training Program and the State Graduate Fire Training Program are adopted as standard throughout the County of Dutchess. The Emergency Response Coordinator or his designee (Deputy Coordinator – Training Division) shall:

1. Select locations and dates for courses based on demands and requests of participating agencies
2. Supervise instruction by the County Fire Instructors
3. Solicit and determine needs for existing or new courses and schedule them accordingly
4. Interface with the New York State Office of Fire Prevention and Control
5. Maintain open communications regarding issues and concerns on a timely basis with all related agencies.

### **B. EMS**

The Department of Emergency Response is not a sponsoring agency for Certified EMS Education programs for the New York State Department of Health Bureau of Emergency Medical Services( NYSDOHBEMS). The EMS Division of the Dutchess County Department of Emergency Response shall:

1. Coordinate Certification programs with sponsoring agencies
2. Provide mandatory training programs as directed by NYSDOHBEMS.
3. Solicit and determine needs for existing or new programs and schedule them accordingly
4. Interface with the NYSDOHBEMS

## **25. CRITICAL INCIDENT RESPONSE TEAM (CIRT)**

A. The Dutchess County Critical Incident Response Team is designed for emergency responders who have taken part or worked in a critical incident. This service is not meant for the general public or as a replacement for professional counseling. The Critical Incident Response Team is comprised of specially trained firefighters, EMT's, paramedics, law enforcement officers, dispatchers and mental hygiene professionals.

B. The Dutchess County Emergency Response Coordinator shall appoint a director to oversee the operations of the team.

## **26. DUTCHESS COUNTY FIRE POLICE RESPONSE TEAM**

The County's Fire Police Response Team consists of volunteer Fire Police officers who are trained to assist local participating agencies. The Fire Police Response Team may be called upon to respond and assist at natural or man-made disasters. The team is lead by a Team Leader, and two Assistant Team Leaders.

The Team can only be activated upon approval of the Dutchess County Emergency Response Coordinator or his designee.

## **27. COMPLIANCE WITH THE DUTCHESS COUNTY RADIO PLAN**

A. All participating agencies must be compliant at all times with the Dutchess County Radio Plan (Appendix A-3).

B. All participating agencies will be subject to reviews to determine their compliance status. Reviewed will be performed by the Dutchess County Department of Emergency Response Coordinator or his designee.

C. Failure to comply with the Dutchess County Radio Plan Standards and Operational Guidelines, will result in temporary removal from participation and will be subject to a review and a hearing with the Dutchess County Emergency Response Coordinator.



**28 . DUTCHESS COUNTY DEPARTMENT OF EMERGENCY RESPONSE ADMINISTRATIVE COMMUNICATION POLICY**

The Dutchess County Department of Emergency Response method of communication for non emergency correspondence is via electronic mail (email). All participating agencies are required to provide an email address(s) for the purpose of distributing non emergency correspondence.



# Cold Spring Fire Company No.1

154 Main Street  
Cold Spring, NY 10516  
[www.coldspringfd.org](http://www.coldspringfd.org)

## EMERGENCIES

911

Dispatch

845-225-4860

All other

845-265-9241

Fax

845-265-1093

September 25, 2021

Jason Mencher  
AKRF, Inc.  
34 South Broadway  
Suite 300  
White Plains, NY 10601

Re: Requested Information for Hudson Highland Fjord Trail

Dear Mencher,

In response to your correspondence I have provided information below as per the above stated project request.

The Cold Spring Fire Company is located at 154 Main St, Cold Spring, NY and is a 100% Volunteer Fire Company with approximately 30 Active Firefighters.

We have a response time of approximately 10 minutes to the proposed project.

The Cold Spring Fire Company apparatus consist of the following:

- 1 Rescue/Engine with 2500 gal of water
- 1 Engine with 1000 gal. of water
- 1 Brush Truck with 200 gal. of water
- 1 UTV
- 1 Fire Boat (docked at Cold Spring Boat Club)

This project could potentially have a huge impact on the area with vehicle traffic and more pedestrian foot traffic that could increase the probability of emergency



situations. Also, with access points to the river along there is a chance of increased river response calls. With a shortage of volunteers for emergency services it would be a strain on the volunteers to add more potential calls. Not only would the volunteers feel the impact but the local residents who depend on us to protect them would be deprived of our services.

The following are questions are concerns for emergency responders.

1. Is there any designated area for emergency vehicles to park in the event of an emergency response to the area? Route 9D is a heavily traveled road at high speeds which causes a safety concern of emergency responders.
2. Who will the Knox Box keys at access points be keyed too?
3. Will there be any added NYS Park employees added to the area to handle emergency responses?

Please feel free to contact me with any further questions @ [coldspringfdchief@gmail.com](mailto:coldspringfdchief@gmail.com) or 845-219-4091.

Respectfully  
Tom Merrigan  
Chief  
Cold Spring Fire Co.



# Dutchess Junction Fire District

75 Slocum Road  
Beacon, NY 12508

## COMMISSIONERS

Fred Finck, Chairman

Harry Coris

Mike Anzovino

Jan Morrel

Michael Bazzo

November 11, 2021

AKRF Inc.

34 South Broadway, Suite 300

White Plains, NY 10601

Dear Mr. Mencher:

The Dutchess Junction Fire District is a small, all volunteer fire company that provides fire and rescue services in Dutchess Junction, from the border of the city of Beacon (Dutchess County) to the Breakneck tunnel in Cold Spring (Putnam County). Our district operates on an annual budget of \$102,000, and the majority of our calls involve automobile accidents, EMS assistance, hiking rescue, and brush fires. We estimate that our services will encompass approximately 3 miles of the proposed Hudson Highlands Fjord Trail, including the Route 9D corridor which is the state highway used to access the trail.

In anticipation of the increased traffic and the number of visitors and hikers, we request a mini attack vehicle to supplement our existing 1987 utility pick up truck in order to provide fire and rescue services to the HHFT as well as the Visitor Center and HHFT offices. This vehicle would provide 250 to 300 gallons of water, as well as adequate space for brush fire fighting equipment and tools. Also, this vehicle would provide space for rescue equipment such as a stretcher to transport injured people.

A mini attack vehicle would be more beneficial to service the HHFT than a small all terrain vehicle, as an ATV would need a trailer and vehicle to tow it to locations on the trail. There is very limited access for an ATV on the eastern slopes of Route 9D in our district.

Thank you for your consideration of this request. Please contact me if you have any questions or need any additional information.

Sincerely,

Harry Coris

Commissioner and Volunteer Firefighter  
Dutchess Junction Fire District and Company



## Jason Mencher

---

**From:** Thompson, Evan (PARKS) <Evan.Thompson@parks.ny.gov>  
**Sent:** Saturday, November 13, 2021 10:43 AM  
**To:** Jason Mencher  
**Subject:** RE: HHFT - Information Regarding Parks Staffing

Hi Jason,

See below for the answers to your questions. Let me know if you need any further information.

Thanks, Evan

---

**From:** Jason Mencher <jmencher@akrf.com>  
**Sent:** Thursday, November 11, 2021 12:39 PM  
**To:** Thompson, Evan (PARKS) <Evan.Thompson@parks.ny.gov>  
**Cc:** crobbins@akrf.com  
**Subject:** HHFT - Information Regarding Parks Staffing

*ATTENTION: This email came from an external source. Do not open attachments or click on links from unknown senders or unexpected emails.*

Hi Evan,

My name is Jason Mencher, and I am a colleague of Chris Robbins (cc here). I am working with Chris on the DEIS for the Hudson Highlands Fjord Trail.

Per the scope of the DEIS, we need information regarding Parks' staffing and resources (in the context of analyzing emergency services), and Chris suggested I reach out to you. I've listed some questions below, and any answers you provide will help with our drafting of the DEIS. These questions are in the context of the resources used in HHSP, and your ability to direct those resources, as needed, to areas outside of HHSP, including to the proposed Fjord Trail.

- What public services does Parks perform outside of emergency services support? We perform trail stewarding on the weekends and staff the park office, and maintenance during the week. Included in maintenance is: trail clearing and blazing, building and structure upkeep, tree cutting, landscaping, garbage pickup and cleaning, and stocking of map boxes throughout the park. Staff also assists with operations at Fahnestock State Park. We do more than support emergency services. Normally, we receive the first call regarding rescues of all kinds and act as triage to determine whether we can handle it ourselves or need support from local emergency services. We are first responders.
- What is the number of Parks staff in HHSP? Regionally? Currently there are four full time employees in the park and 4 part time who work one or two days on the weekend. In the summer season from Memorial Day to Labor Day, there are about 8 full time employees, including 2 unpaid SCA interns. I'm not sure what you mean by regionally. There is a regional management structure but they are typically not on the ground in the park. We occasionally rely on the regional maintenance crew to deal with maintenance issues beyond our scope. Park Police is involved with us in rescue operations. Fahnestock staff also occasionally helps out with large projects.
- What equipment does Parks have in HHSP related to emergency response? We have two pick up trucks, a John Deere Gator, a wheeled stretcher, a first aid bag, and various small equipment like backpacks, headlamps and whistles.
- What other public services does Parks provide? Pretty much all the duties listed above can be called public services. Can you be more specific?



- What is Parks' responsibility in responding to emergencies in HHSP? Outside of HHSP? Along the Fjord Trail? As described above, park staff are first responders in Hudson Highlands, Fahnestock and Wonder Lake State Parks. It has yet to be determined, to my knowledge, what role we will have in Fjord Trail rescues. My understanding is that the Fjord Trail will have their own staff to handle emergencies but we would certainly be available to support if needed.
- Is there a specific geographic area (beyond HHSP) within which Parks responds to emergencies? Fahnestock and Wonder Lake.
- How is Parks made aware of an emergency within HHSP? Outside of HHSP? The procedure is the same in all 3 parks though it varies by incident. Normally a call is made by the injured or lost hiker, either directly to Park Police or to 911 who then relay the message to the police who then call the park manager. If the park manager is unavailable, there is a chain of command that is followed until someone is found. Unfortunately, calls to 911 are not always routed correctly and the wrong people are called or there are delays in reaching the right people. The park is in 3 counties, numerous townships and cities, and occasionally 911 calls are routed across the river to Orange County. Sometimes we find out about calls when we see emergency service vehicles drive past the park office with sirens on. A further complication has been the merger of Park Police with State Police. Often, 911 calls are routed to State Police dispatch who have no knowledge of the park or its employees. They typically call the Park Police officer on duty, who then call us, but there is not always someone on duty. The system overall does not work well and needs to be overhauled.
- Does Parks coordinate with any other emergency services providers, either formally or informally (e.g., NYS Park Police, nearby police/fire/ems departments)? Over the years, we have developed relationships with local emergency service providers by being on calls with them. We know each other's cell phone numbers and are able to communicate when there is a need. There is no formal structure although we have had occasional meetings with various groups. Park staff generally handles lost hiker calls without assistance from anyone but Park Police. The only exception would be in a man hunt situation where we have no precise information as to the missing person's whereabouts. Since park staff has an intimate knowledge of the trails, our role in the case of injured hikers is to locate the victim, provide the best access route for medical services to reach them, and provide manpower and our wheeled stretcher to bring the person off the mountain. If parks staff and the fire department are unable to complete the rescue due to challenging terrain, the next step would be to call the Orange County ropes team who are trained in high angle rescues. In the case of severe or life threatening injury, the final option is to call for a helicopter which normally comes from State Police, NYPD, or West Point, depending on who is available to respond. We also coordinate with DEC in the case of wildland fires.

Please feel free to provide any additional information, beyond answers to these questions, that you believe might help inform our analysis.

If you have any questions, or wish to discuss, please feel free to reach out to me or Chris.

Jason



Jason Mencher, J.D., M.S.  
Planner

---

P: 914.922.2353 | M: 631.805.4294 | [jmencher@akrf.com](mailto:jmencher@akrf.com) | [www.akrf.com](http://www.akrf.com)  
34 South Broadway, Suite 300, White Plains, NY 10601

*This e-mail and any attached file is intended only for the person or entity to which it is addressed and may contain information that is privileged, confidential or otherwise protected from disclosure. Dissemination, distribution or copying of this e-mail or the information herein by anyone other than the intended recipient, or an employee or agent responsible for delivering the message to the intended recipient, is prohibited. AKRF will not be responsible for the misuse, reuse, or modification of the transmitted information.*



## Jason Mencher

---

**From:** Steven Longo <SLongo@mobilelife.com>  
**Sent:** Wednesday, September 8, 2021 10:50 AM  
**To:** Jason Mencher  
**Subject:** Hudson Highland Fjord Trail

Jason ,

I am in receipt of your letter regarding the project . We are the advanced Life Support (Paramedic) provided for the Beacon District which means in a medical emergency that the Dutchess County 911 center deems to need a Paramedic we would be dispatched to back up Beacon Ambulance . Most of those responses would come out of our Fishkill station with the secondary station being Newburgh.

Your project should not effect our response times at all to the Beacon District , We normally do not cover the Cold Spring area unless no one is available and then that response would come out of our Cortland station and again I don't believe there would be any delay .

Sincerely,

Steven Longo  
Communications Center Manager  
Event Standby Coordinator  
Mobile Life Support Services Inc.





## Parks, Recreation and Historic Preservation

**KATHY HOCHUL**  
Governor

**ERIK KULLESEID**  
Commissioner



**MICHAEL PAVELOCK**  
Acting Director of Law Enforcement

November 2, 2021

AKRF Inc.  
Environmental, Planning and Engineering Consultants  
34 South Broadway  
Suite 300  
White Plains, NY 10601

Dear Mr. Mencher:

Please be advised this request for information is based solely on my interpretation of the impacts placed on the New York State Park Police only and not any of the other Law Enforcement/Emergency service agencies that provide services to the area in question.

To facilitate this request I will answer your questions in the following format:

### **EXISTING CONDITIONS INFORMATION:**

1. Location, equipment and staffing at each of the stations (and sub-stations), which serve the Proposed Project Study Area. Please be as specific as possible.

*Answer: The NYS Park Police Officers that primarily cover that area turn out of the South Zone Station located in Franklin Delano Roosevelt (FDR) State Park which is in Yorktown NY. This does not mean this area is these Officers' sole responsibility. The Officers that turn out of FDR State Park have numerous areas of responsibility with the Hudson Highlands being one of them. If no officers from FDR are available, Park Police Officers may respond from as far as Lake Taghkanic State Park located in Columbia County which is well over an hour away.*

2. From which of the above referenced stations do you dispatch personnel to distinct locations as presented on the map below. Please be as specific as possible. For example, "for emergency services calls to Segment 1.1 - Cold Spring Station to little Stony Point, we would dispatch personnel from



XXXX station/substation.”

*Answer: The South Zone Station located in Franklin Delano Roosevelt (FDR) State Park (Yorktown – Westchester County) would be the primary station.*

*The North Zone Station located in Lake Taghkanic State Park (Columbia County) would be the secondary station.*

3. Please describe mutual aid agreements with adjacent municipalities, if any.

*Answer: To my knowledge there are no mutual aid agreements with adjacent municipalities.*

4. Please provide current response time to the Proposed Trail segments presented in the attached map.

Please include responses to both individual locations and the total number of responses.

*Answer: The current response time from FDR State Park (South Zone Station) to the proposed area in a normal patrol mode would be 35 minutes (approx.). In an emergency, response the time from FDR State Park to the area in question would be 25 minutes (approx.). If an Officer was responding from Lake Taghkanic State Park the response time would be 90 -120 minutes (approx.).*

#### **PROJECTED/PROPOSED CONDITIONS INFORMATION:**

1. Please estimate the anticipated change in personnel and equipment resulting from implementation of

**just the Proposed Project**, to service the overall Trail and the Proposed Shoreline Trail specifically.

*Answer: With the increase in visitation, I can only assume there will be an increase in the number of calls for service. With this increase, the impact on our personnel and equipment will be adversely affected by physical wear-and-tear.*

2. Please confirm there would be no anticipated change in response time to the proposed overall Trail and proposed Shoreline Trail specifically. If you anticipate a change in response time due to Project implementation, please estimate the change.

*Answer: At this time, I will assume there will be no change in response time to the proposed project area.*

3. Please describe other potential/estimated impacts of **just the Proposed Project** on your department's services. Please consider only demand generated by the Proposed Project and not demand generated by the existing area trails.

*Answer: From May 1<sup>st</sup>, 2021, to November 1<sup>st</sup>, 2021, the New York State Park Police Responded to over 140 calls for service in the Hudson Highlands area with these calls*



*primarily being handled by a single Officer. The calls range in severity from minor parking calls to severe injury and/or extreme response. With the increased visitation to the area the Hudson Highlands Fjord Trail will bring, the limited Park Police Personnel would be additionally taxed by responding to the eventual increase in the calls for service. With this increase, the ability for the Park Police to cover the rest of our area effectively would be decreased.*

4. Please describe anticipated changes to your department, independent of this Project, such as new equipment, increase/decrease in personnel or budget, or any other factors that may affect the future capacity to respond to emergencies.

*Answer: As with any addition of property, land or areas of interest, there will be an increase in the number of visitors to that area. The need for additional emergency response equipment to effectively patrol and respond to emergencies would be greatly apparent. The future need for a water access point and or UTV access would be advantageous.*

If I can be of any further service, please do not hesitate to ask.

Respectfully,

Lieutenant David Szekeres



## Jason Mencher

---

**From:** Greg Wunner <gwunner@philipstown.com>  
**Sent:** Wednesday, September 1, 2021 3:01 PM  
**To:** Jason Mencher; John VanTassel  
**Subject:** Re: Hudson Highlands Fjord Trail Emergency Services Information Request

**Follow Up Flag:** Follow up  
**Flag Status:** Flagged

Good afternoon Jason. I believe this request will be better responded to by the Cold Spring Fire Chief. I believe this portion of Town is served by them

Chief - Tom Merrigan 845-219-4091 I have also included the Town Deputy Supervisor, who is a member of the adjoining North Highlands Fire Dept.

[coldspringfd@gmail.com](mailto:coldspringfd@gmail.com)

On 9/1/2021 12:09 PM, Jason Mencher wrote:

Hello Mr. Wunner,

Please see the annexed correspondence.

Thank you for your attention to this matter, I appreciate it.

Best,

Jason



**Jason Mencher, J.D., M.S.**  
Planner

---

P: 914.922.2353 | M: 631.805.4294 | [jmencher@akrf.com](mailto:jmencher@akrf.com) | [www.akrf.com](http://www.akrf.com)  
34 South Broadway, Suite 300, White Plains, NY 10601

*This e-mail and any attached file is intended only for the person or entity to which it is addressed and may contain information that is privileged, confidential or otherwise protected from disclosure. Dissemination, distribution or copying of this e-mail or the information herein by anyone other than the intended recipient, or employee or agent responsible for delivering the message to the intended recipient, is prohibited. AKRF will not be responsible for the misuse, reuse, or modification of the transmitted information.*





ROBERT L. LANGLEY, JR.  
SHERIFF

PUTNAM COUNTY  
OFFICE OF THE SHERIFF  
AND  
CORRECTIONAL FACILITY  
THREE COUNTY CENTER  
CARMEL, NEW YORK 10512  
845-225-4300



KEVIN M. CHEVERKO  
UNDERSHERIFF

September 15, 2021

Jason Mencher, AKRF, Inc  
Environmental, Planning, and Engineering Consultants  
34 South Broadway, Suite 300  
White Plains, NY 10601

Re: Emergency Services, Fjord Trail

Dear Jason,

I have reviewed your letter dated September 1, 2021 for Emergency Services Information Request.

Existing Conditions Information:

1. Location, equipment and staffing at each of the stations (and sub-stations), which serve the Proposed Project Study Area. Please be as specific as possible. – **The Putnam County Sheriff's Office Main Office is located at 3 County Center Carmel, New York. We have an operational sub-station in the Village of Nelsonville where members of the Sheriff's Office start and end their shift from. We provide a 24/7/365 public safety service to our community. The substation houses a Zodiac boat and a UTV which can be utilized for off road search and rescue operations. We have approximately 35 uniformed patrol members, five of which are assigned to the Nelsonville sub-station.**
2. From which of the above referenced stations do you dispatch personnel to distinct locations as presented on the map below. Please be as specific as possible. For example, "for emergency services calls to segment 1.1 – Cold Spring Station to little Stoney Point, we would dispatch personnel from XXXX station/substation." – **For calls from Dockside Park to Breakneck we would dispatch patrols assigned to the Town of Philipstown. Patrols are mobile throughout the community and do not remain at either station house. Should additional personnel be needed we would either pull from the east side of the county or call in additional members for this purpose.**

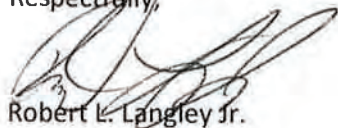


3. Please describe mutual aid agreements with adjacent municipalities, if any. – **Not applicable.**
4. Please provide current response time to the Proposed Trail Segments presented in the attached map. – **The longest response time would be approximately 25 minutes should the patrol be coming from our headquarters in Carmel. Patrols in the Town could be there between 4 to 15 minutes depending upon their location in the Town of Philipstown at the time of call. Given the location of the Fjord Trail you would have at least one patrol and up to three patrols. A response of three patrols would include the Village of Cold Spring Police Department.**

Projected/Proposed Conditions Information:

1. Please estimate the anticipated change in personnel and equipment resulting from implementation of just the Proposed Project, to service the overall Trail and Proposed Shoreline Trail specifically. - **At this time, I do not anticipate any change. Should you require a dedicated patrol for the trail a dedicated member known as a Special Patrol Office could be contracted by the New York State Department of Parks for this purpose for \$35,000.00 annually plus administrative fees, uniforms and other equipment that needs to be provided.**
2. Please confirm there would be no anticipated change in response time to the proposed overall Trail and proposed Shoreline Trail specifically. If you anticipate a change in response time due to Project implementation, please estimate the change. – **No change is anticipated at this time.**
3. Please describe other potential/estimated impacts of just the Proposed Project on your department's services. Please consider only demand generated by Proposed Project and not demand generated by the existing area trails. – **It is anticipated that calls for medical assistance will increase in that are due to the volume of people that will be drawn to the Shoreline Trail specifically. Additionally, it would be anticipated that water rescue calls will increase based upon the image showing the Shoreline Trail in the water. Given the fact that the County Lawmakers have Defunded the Sheriff's Office, resulting in the elimination of the Hudson River Patrol an increased response time for such could now be 30 minutes as opposed to our previous 5-minute response from the marina.**
4. Please describe anticipated changes to your department, independent of this Project, such as new equipment, increase/decrease in personnel or budget, or any other factors that may affect the future capacity to respond to emergencies. – **I am anticipating additional defunding in the 2022 Budget Process which will have an impact on our ability to properly serve our community and provide adequate services to the county. This could have a direct impact on the safety to those who would otherwise enjoy the proposed Fjord Trail and all it has to offer not only to our residents, but those who come to visit the Hudson Highlands.**

Respectfully,



Robert L. Langley Jr.  
Sheriff



## Jason Mencher

---

**From:** lucariello <romboutfd@optonline.net>  
**Sent:** Saturday, September 11, 2021 2:41 PM  
**To:** Jason Mencher  
**Subject:** Hudson Highlands Trail

Greetings Mr.Mencher,

In reference to your letter dated September 1, 2021, The location stated in your letter is not covered by the Rombout Fire District. There are multiple Fire Districts that cover the area in question. Although parts of the area on the map are located in the Town of Fishkill, Dutchess Junction Fire District , City of Beacon Fire Department are responsible for the coverage in the area north of the Putnam County line, to Long Dock Park.

If I can be any further assistance, please feel free to contact me. Thank you

John Lucariello  
Chief  
Rombout Fire Department  
845-629-3369



**Letters Sent**  
(2024)

## 2024 RECIPIENTS

### **POLICE SERVICES**

Beacon Police Department  
Sands Frost, Chief of Police

Dutchess County Sheriff  
Kirk Imperati, Sheriff

Fishkill Police Department  
Keith Dworkin, Chief of Police

NYS Parks Police  
David Szekeres, Lieutenant

NYS Police  
Major Kathryn M. Rohde, Troop K Commander

Putnam County Sheriff  
Kevin J. McConville, Sheriff

Village of Cold Spring Police Department  
Larry Burke, Chief of Police

### **FIRE SERVICES**

Beacon Fire Department  
Tom Lucchesi, Fire Chief

Cold Spring Fire Company No. 1  
Jeffrey Phillips, Chief

Dutchess Junction Fire Department  
Harry Coris, Commissioner

Fishkill Fire Department  
Brandon Knapp, Chief

Philipstown Fire Department (North Highlands Fire Department Engine Co. 1)  
Greg Wunner, Chief



## **EMS PROVIDERS**

Beacon Volunteer Ambulance Corps  
Nicholas Scarchilli, Chief of Operations

Dutchess County Department of Emergency Response  
Dana Smith, Commissioner

Mobile Life Support Services  
Steven Longo, Manager

Philipstown Volunteer Ambulance Corps  
Chris Tobin, Chief

Putnam County Bureau of Emergency Services  
Robert Lipton, Commissioner

## **OTHER**

Hudson Highlands State Park Preserve  
Evan Thompson, Park Manager



**AKRF, Inc.**  
**Environmental, Planning, and Engineering Consultants**  
34 South Broadway  
Suite 300  
White Plains, NY 10601  
tel: 914 949-7336  
fax: 914 949-7559  
[www.akrf.com](http://www.akrf.com)

January 2, 2024

[RECIPIENT]

Re: Proposed Hudson Highlands Fjord Trail—Emergency Services Information Request

Dear Recipient:

AKRF is working in conjunction with the New York State Office of Parks, Recreation and Historic Preservation (OPRHP) and Hudson Highlands Fjord Trail, Inc. (a subsidiary of Scenic Hudson, Inc.) to assess the potential impacts of the proposed Hudson Highlands Fjord Trail (“Proposed Trail”) under the State Environmental Quality Review Act (SEQRA).

The Proposed Trail involves development of an approximately 7.5-mile long non-motorized shared-use trail (with an additional approximately 6.5 miles of trail meanders) between the Village of Cold Spring (Putnam County) and the City of Beacon (Dutchess County) and partially running within or adjacent to the Hudson Highlands State Park Preserve. Please refer to the attached graphic depicting, generally, the anticipated path of the Proposed Trail.

In September 2021, AKRF sent a letter to your organization requesting feedback regarding the potential for impacts from the Proposed Trail on the services your organization provides. As we continue our environmental review under SEQRA, we are sending this letter to seek any updates, or additional information, you might wish to provide. We respectfully request any updated information related to your existing operations (e.g., stations/sub-stations, staffing numbers, or dispatch considerations/current response times along the Proposed Trail corridor) and any concerns or comments related to potential impacts of the Proposed Trail (e.g., access, response times, staffing, equipment, etc.).

Thank you in advance for your assistance. Your response can be mailed to my attention at the address above, or e-mailed to me at [jmencher@akrf.com](mailto:jmencher@akrf.com). If you have any questions as you prepare your response, please feel free to contact me at that email address or at (914) 922-2353. If you could provide your response by January 31, 2024, that would be greatly appreciated.

Sincerely,

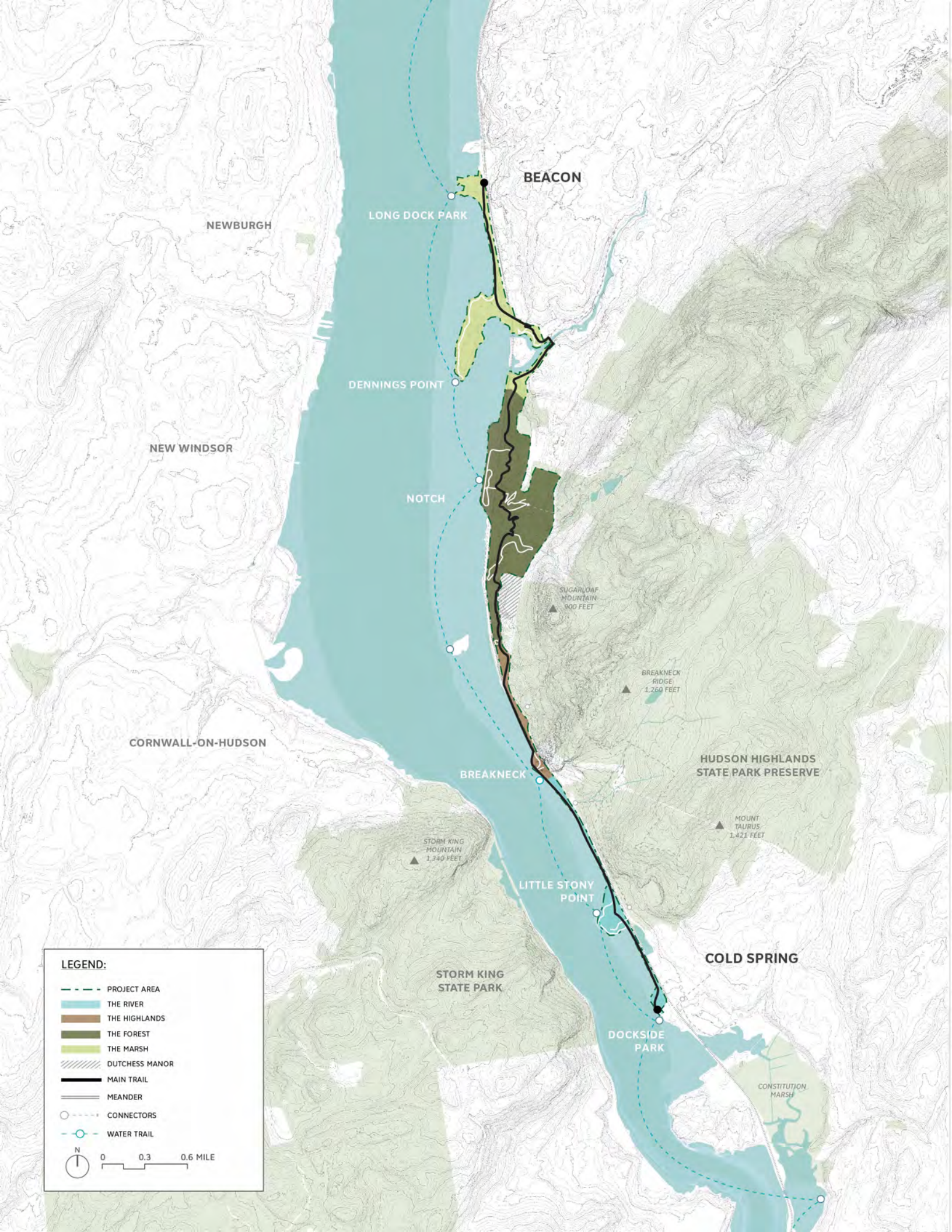
A handwritten signature in black ink that reads "Jason Mencher". The signature is written in a cursive, flowing style.

Jason S. Mencher, AKRF, Inc.,  
Senior Planner



Attachment: Preliminary Trail Alignment

cc: Nancy Stoner, OPRHP  
Amy Kacala, HHFT, Inc.  
Steven Gates, AKRF, Inc.



BEACON

NEWBURGH

LONG DOCK PARK

DENNING'S POINT

NEW WINDSOR

NOTCH

SUGARLOAF MOUNTAIN  
900 FEET

BREAKNECK RIDGE  
1,260 FEET

CORNWALL-ON-HUDSON

BREAKNECK

HUDSON HIGHLANDS STATE PARK PRESERVE

MOUNT TAURUS  
1,421 FEET

STORM KING MOUNTAIN  
1,340 FEET

LITTLE STONY POINT

STORM KING STATE PARK

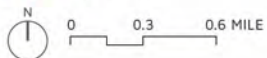
COLD SPRING

DOCKSIDE PARK

CONSTITUTION MARSH

**LEGEND:**

- PROJECT AREA
- THE RIVER
- THE HIGHLANDS
- THE FOREST
- THE MARSH
- DUTCHESS MANOR
- MAIN TRAIL
- MEANDER
- CONNECTORS
- WATER TRAIL





**Responses Received**  
(2024)

**From:** [Thomas Lucchesi](#)  
**To:** [Jason Mencher](#)  
**Subject:** RE: Hudson Highlands Fjord Trail - Request for Emergency Services Information  
**Date:** Thursday, January 4, 2024 2:57:27 PM  
**Attachments:** [image002.png](#)

---

You don't often get email from [tlucchesi@beaconny.gov](mailto:tlucchesi@beaconny.gov). [Learn why this is important](#)

Jason,

Thank you for the follow up correspondence.

The City of Beacon Fire Department is currently totally renovating the firehouse located at 13 South Avenue and, as of today, the anticipated date for substantial completion to reoccupy the building is the end of October 2024. Upon completion of the new firehouse the career staff will be located within two thousand feet of the Fjord trail at Long Dock Park. The City of Beacon Fire Department has at least four career firefighters on duty at all times which allows the Fire Department to immediately respond to calls for service.

I do feel that there will be an increased response time to a majority of the trail due to limited access. The City of Beacon Fire Department does not have an all-terrain vehicle to access portions of the trail that are not near a roadway. It would be fair to anticipate that the proposed Fjord trail would likely result in an increase for calls for service for the Fire Department during high use times. If equipped with a proper response vehicle and through mutual aid agreements, the Beacon Fire Department could service the entire portion of the Fjord trail.

I look forward to discussing this matter further with you.

**Thomas Lucchesi**

Fire Chief

City of Beacon Fire Department

Office (845)831-1334

Cell (845)857-3225

---

**From:** Jason Mencher <[jmencher@akrf.com](mailto:jmencher@akrf.com)>  
**Sent:** Thursday, January 4, 2024 12:02 PM  
**To:** Thomas Lucchesi <[tlucchesi@beaconny.gov](mailto:tlucchesi@beaconny.gov)>  
**Subject:** RE: Hudson Highlands Fjord Trail - Request for Emergency Services Information

Good Morning Chief,

I've attached to this email the response we received from Chief VanVoorhis back on 9/17/21. I hope this helps. Please let me know if you have any other questions.

Thank you,

Jason

**Jason Mencher, MUP, JD**

Planner

P: 914.922.2353 | M: 631.805.4294 | [jmencher@akrf.com](mailto:jmencher@akrf.com) | [www.akrf.com](http://www.akrf.com)  
34 South Broadway, Suite 300, White Plains, NY 10601

---

**From:** Thomas Lucchesi <[tlucchesi@beaconny.gov](mailto:tlucchesi@beaconny.gov)>



**Sent:** Wednesday, January 3, 2024 7:14 PM

**To:** Jason Mencher <[jmencher@akrf.com](mailto:jmencher@akrf.com)>

**Subject:** Re: Hudson Highlands Fjord Trail - Request for Emergency Services Information

You don't often get email from [tlucchesi@beaconny.gov](mailto:tlucchesi@beaconny.gov). [Learn why this is important](#)

Sir,

Thank you for your correspondence, in April 2023 I became the new Fire Chief for the City of Beacon after Chief VanVoorhis retired. Before I provide any feedback, would you be able to forward any previous correspondence that Chief Van Voorhis may have provided regarding the Fjord Trial?

I look forward to working with you.

**Thomas Lucchesi**

Chief of Department

City of Beacon Fire Department

[tlucchesi@beaconny.gov](mailto:tlucchesi@beaconny.gov)

Office (845)831-1334

Cell (845)857-3225

---

**From:** Jason Mencher <[jmencher@akrf.com](mailto:jmencher@akrf.com)>

**Sent:** Wednesday, January 3, 2024 5:12 PM

**To:** Thomas Lucchesi

**Subject:** Hudson Highlands Fjord Trail - Request for Emergency Services Information

Chief Lucchesi,

Please see the attached correspondence which I have also sent by mail to your office.

Thank you for any information you are able to provide.

Best,

Jason Mencher

**Jason Mencher, MUP, JD**  
Planner

---



---

P: 914.922.2353 | M: 631.805.4294 | [jmencher@akrf.com](mailto:jmencher@akrf.com) | [www.akrf.com](http://www.akrf.com)  
34 South Broadway, Suite 300, White Plains, NY 10601

*This e-mail and any attached file is intended only for the person or entity to which it is addressed and may contain information that is privileged, confidential or otherwise protected from disclosure. Dissemination, distribution or copying of this e-mail or the information herein by anyone other than the intended recipient, or an employee or agent responsible for delivering the message to the intended recipient, is prohibited. AKRF will not be responsible for the misuse, reuse, or modification of the transmitted information.*





CHIEF OF POLICE  
SANDS FROST

CITY OF BEACON  
POLICE DEPARTMENT

1 MUNICIPAL PLAZA, SUITE 3  
BEACON, NY 12508  
(845) 831-4111  
FAX: (845) 838-5092



January 18, 2024

Jason S. Mencher, Senior Planner  
34 South Broadway  
Suite 300  
White Plains, NY 10601  
[imencher@akrf.com](mailto:imencher@akrf.com)

Re: Proposed Hudson Highlands Fjord Trail – Emergency Services Information Request

Dear Jason Mencher,

Thank you for reaching out to our agency in regards the proposed trail. We are a small department with no substations. Our patrol shifts include a patrol sergeant and either two or three police officers on the road (More if there are any events such as parades or festivals that day). All of our patrol vehicles are either AWD or four-wheel drive. We also have one UTV. The UTV is not deployed on a daily basis but is accessible to the shift if needed. We have used it for accessing part of Dennings Point for emergency situations. Beacon Volunteer Ambulance Corps also has a UTV to assist in areas where regular vehicles cannot gain access. As for now, the trail system would not receive regular patrols unless criminal activity started to occur on a regular basis. We have property currently owned by Scenic Hudson and New York State Parks that we are the primary response department for. These areas however have a relatively low call volume as I suspect would be the same for the Hudson Highlands Fjord Trail. People who frequent areas such as yours aren't usually a problem. The quickest way to get a police response is to call us directly at 845-831-4111, as that phone is staffed 24 hours a day, every day of the week. The quickest response for ambulance or fire service is dialing 911. This will also get you police services. Our response time in most parts of the city is under 5 minutes. Obviously call volume can greatly affect that. Some harder to reach locations that require the use of the ATV can add approximately another 15 minutes to that since someone would have to return to the station, switch vehicles (including their equipment), and then respond. As for now, I don't foresee the trail system creating a huge impact on our operations. If you have any questions, my direct line is (845) 838-5055. This is not an emergency number nor is it staffed 24 hours a day.

Sincerely,

Sands E Frost II  
Chief of Police

# Cold Spring Fire Company No.1

154 Main Street  
Cold Spring, NY 10516  
[www.coldspringfireco.org](http://www.coldspringfireco.org)

**EMERGENCIES**  
911

Dispatch  
845-225-4860

All other  
845-265-9241

Fax  
845-265-1093

January 04, 2024

Jason Mencher  
AKRF, Inc.  
34 South Broadway  
Suite 300  
White Plains, NY 10601

Re: Requested Information for Hudson Highlands Fjord Trail

Dear Jason Mencher,

In response to your correspondence I have provided information below as per the above stated project request.

The Cold Spring Fire Company is located at 154 Main St, Cold Spring, NY and is a 100% Volunteer Fire Company with approximately 30 Active Firefighters.

We have a response time of approximately 10 minutes to the proposed project.

The Cold Spring Fire Company apparatus consist of the following:

- 2 Chief/ Command Vehicles
- 1 Rescue/Engine with 2500 gal of water
- 1 Engine with 1000 gal. of water
- 1 Brush Truck with 200 gal. of water
- 1 UTV
- 1 Utility (support vehicle)
- 1 Fire Boat (docked at Cold Spring Boat Club)



The Fjord Trail project could potentially have an enormous impact on the fire protection area with anticipated increased vehicle traffic and pedestrian foot traffic. Which predictably would increase the probability of emergency situations. In addition, with access points to the river along the project there is a significant chance of increased river response calls. With a shortage of volunteers for emergency services it would be a strain on the current volunteers to add more potential calls. Not only would the volunteers feel the impact of the project but the residents who depend on the Cold Spring Fire Company to protect them would be deprived of our vital services.

The following questions are concerns for emergency responders:

1. Is there any designated area for emergency vehicles to park in the event of an emergency response/event to the area? Route 9D is a heavily traveled road at high speeds which causes a safety concern to emergency responders.
2. Who will the Knox Box keys at access points be keyed too?
3. Will there be any added NYS Park employees added to the area to handle emergency responses?
4. Will there be any markings along the trail (such as mile markers)? That way if there is an incident/emergency first responders will know the exact location to expedite care.

Please feel free to contact me with any further questions @  
coldspringfdchief@gmail.com or 845-219-6402.

Respectfully,  
Jeffrey Phillips Jr  
Chief  
Cold Spring Fire Company No.1





**From:** [VILLAGE OF COLD](#)  
**To:** [Jason Mencher](#)  
**Subject:** Voice Mail (1 minute and 36 seconds)  
**Date:** Thursday, January 11, 2024 10:27:20 AM  
**Attachments:** [audio.mp3](#)

---

Good morning, Mr. Mayor. My name is Larry Burke. I'm the commanding officer of the Village of Calls from Police Department. I received a letter based from your, I guess your department about the proposal with the few Orange Trail emergency services information request. Basically we cover the North End. Actually we cover all of Dockside, so I don't know what extra services I'm going to need until until the until we're looking at the trail, how many people are going to be coming in, what the impact of the busy season which is anywhere from April 1st to N30, November 25th, November 30th is when we have the crowds that come in and go hiking and the big fall foliage and stuff like that. So I really can't give you any more information than that on how would impact us. It's never going to pack us with as a bigger amount of people coming up going through the village dockside using the trail. So at this time I really don't, I don't have an any direct information for you on how it would affect our emergency services until it actually probably be up and running and we can see how many people come through. So I just wanted to take this opportunity to give you a call and let you know receive the letter. And I look forward to working with you in the future on trying to alleviate any type of extra services on our end or any impact it's going to have on my department. And actually also the Volunteer Fire Firehouse that's here in Cold Spring. Feel free to contact me 845-265-3407.

You received a voice mail from [VILLAGE OF COLD](#).

**Thank you for using Transcription! If you don't see a transcript above, it's because the audio quality was not clear enough to transcribe.**

[Set Up Voice Mail](#)

**From:** [Greg Wunner](#)  
**To:** [Jason Mencher](#)  
**Subject:** Re: Hudson Highlands Fjord Trail - Request for Emergency Services Information  
**Date:** Thursday, January 4, 2024 10:06:00 AM  
**Attachments:** [image001.png](#)

---

You don't often get email from gwunner@philipstown.com. [Learn why this is important](#)

Good Morning. I believe you are attempting to reach the chief of the North Highlands Fire Department. My title along with Code Enforcement Official is Fire Marshal. I have little to do with day to day operations of the Fire Departments. A quick look at the district map reveals that the majority of the Fjord trail is in the Cold Spring Fire District. You likely should be reaching out to them as well. Through Mutual Aid, other departments would be responding as well. Maybe contact the Putnam County Emergency Service Coordinator as well. All their contacts should be available on their separate websites. Hope this helps. Greg Wunner Philipstown CEO

On 1/3/2024 5:15 PM, Jason Mencher wrote:

Chief Wunner,

Please see the attached correspondence which I have also sent by mail to your office.

Thank you for any information you are able to provide.

Best,

Jason Mencher



**Jason Mencher, MUP, JD**  
Planner

---

P: 914.922.2353 | M: 631.805.4294 | [jmencher@akrf.com](mailto:jmencher@akrf.com) | [www.akrf.com](http://www.akrf.com)  
34 South Broadway, Suite 300, White Plains, NY 10601

This e-mail and any attached file is intended only for the person or entity to which it is addressed and may contain information that is privileged, confidential or otherwise protected from disclosure. Dissemination, distribution or copying of this e-mail or the information herein by anyone other than the intended recipient, or an employee or agent responsible for delivering the message to the intended recipient, is prohibited. AKRF will not be responsible for the misuse, reuse, or modification of the transmitted information.



**From:** [Ralph Falloon](#)  
**To:** [Jason Mencher](#)  
**Cc:** [Robert Lipton](#); [coldspringfdchief@gmail.com](mailto:coldspringfdchief@gmail.com); [nicholas.falcone@philipstownvac.org](mailto:nicholas.falcone@philipstownvac.org)  
**Subject:** Fjord Trail, Putnam Emergency Services  
**Date:** Thursday, January 11, 2024 5:08:44 PM  
**Attachments:** [image001.png](#)

---

You don't often get email from [ralph.falloon@putnamcountyny.gov](mailto:ralph.falloon@putnamcountyny.gov). [Learn why this is important](#)

Jason,

Happy New Year!

My name is J. Ralph Falloon and I am the Deputy Commissioner of the Bureau of Emergency Services for Putnam County. Commissioner Lipton asked me to reach out to you regarding the letter you sent dated January 2. I would like to apologize for the failure to respond to your correspondence in September of 2021. But Bob and I were not in our current positions at that time. Since New York is an AHJ (authority having jurisdiction) state the Putnam County Bureau of Emergency Services has no jurisdictional control of any part of the proposed trail. But what we do offer is full support to the Cold Spring Fire Co. and the Philipstown Ambulance Corp. for training coordination planning and any other resources we can provide. The county also holds the contract to provide ALS (Advanced Life Support) to the area. Our response times from the county responders are generally under 10 minutes. I have personally worked with these agencies regarding the trail and their responses. We will support them to guarantee the access points, the ability to get motorized emergency vehicles (UTV type) the length of the trail and proper GPS trail markings for the 911 dispatch center for pinpoint location to emergencies. I have been involved in meetings that have already identified those points, so I am confident in the partnerships that have already been forged.

We know all the players and are more than happy facilitate and participate in any Emergency Services discussion that you would like to have.

Thank you.

Respectfully,

**J. Ralph Falloon**

Deputy Commissioner

Putnam County Bureau of Emergency Services

112 Old Route 6

Carmel, NY 10512

Office: 845.808.4000 X 41102

Cell: 914.490.2739

[ralph.falloon@putnamcountyny.gov](mailto:ralph.falloon@putnamcountyny.gov)





**From:** [GALLIPANI, NICHOLAS \(TROOPERS\)](#)  
**To:** [Jason Mencher](#); [PIECHOWICZ, KEVIN \(TROOPERS\)](#)  
**Subject:** RE: Hudson Highlands Fjord Trail  
**Date:** Tuesday, January 9, 2024 3:08:17 PM  
**Attachments:** [DOC010824-001.pdf](#)

You don't often get email from nicholas.gallipani@troopers.ny.gov. [Learn why this is important](#)

Good afternoon,

Troop K, Zone 2's closest station is SP Wappinger located at 18 Middlebush Road, Wappinger. If responding from the station, it is approximately 7 miles to Long Dock Park and 14 miles to Dockside Park. We would either be responding from patrol predominately, but also from the station occasionally. Response times would vary depending on the location of our closest patrols. We provide all Police response services.

If you would like any more information, please let us know,  
NSG

---

**From:** Jason Mencher <jmencher@akrf.com>  
**Sent:** Tuesday, January 9, 2024 12:20 PM  
**To:** GALLIPANI, NICHOLAS (TROOPERS) <NICHOLAS.GALLIPANI@troopers.ny.gov>; PIECHOWICZ, KEVIN (TROOPERS) <KEVIN.PIECHOWICZ@troopers.ny.gov>  
**Subject:** RE: Hudson Highlands Fjord Trail

You don't often get email from [jmencher@akrf.com](mailto:jmencher@akrf.com). [Learn why this is important](#)

**ATTENTION:** This email came from an external source. Do not open attachments or click on links from unknown senders or unexpected emails.

Zone Sergeant Gallipani,

Thank you for your email. Hopefully, I can provide you with some more direction (beyond the request in the letter).

The initial question to consider is whether the NYS Police in Zone 2 provide response services to the area of the Trail Corridor (see the map attached to the letter, please) – either presently (lost hikers, injuries, etc.), or in the future if the trail is constructed. If the answer to that initial question is no, then that would be all we need to know for purposes of our inquiry.

If you do provide services to the area, or would do so in the future, then we would be looking for general information along the lines of the following:

- The stations from which you would dispatch officers from
- The time it would take to reach the Trail Corridor
- The types of response services that officers would provide
- Any specific concerns you might have related to the construction/operation of the new recreational resource (the Trail).

It's possible that Troop K does not/would not provide coverage along the Trail. We have sent a similar inquiry to various service providers along the Trail Corridor (local police, fire, EMS), and it is the case that some of them do not and would not respond to incidents along the Trail (because although proximate to the Trail, the respective coverage area does not include the Trail).

I hope this additional detail helps. If you have any further questions, please do not hesitate to contact me.

Thank you for your response to my letter, and for your hard work protecting our area.

Best,

Jason

**Jason Mencher, MUP, JD**

Senior Planner

P: 914.922.2353 | M: 631.805.4294 | [jmencher@akrf.com](mailto:jmencher@akrf.com) | [www.akrf.com](http://www.akrf.com)  
34 South Broadway, Suite 300, White Plains, NY 10601

---

**From:** GALLIPANI, NICHOLAS (TROOPERS) <[NICHOLAS.GALLIPANI@troopers.ny.gov](mailto:NICHOLAS.GALLIPANI@troopers.ny.gov)>

**Sent:** Monday, January 8, 2024 12:11 PM

**To:** PIECHOWICZ, KEVIN (TROOPERS) <[KEVIN.PIECHOWICZ@troopers.ny.gov](mailto:KEVIN.PIECHOWICZ@troopers.ny.gov)>; Jason Mencher <[jmencher@akrf.com](mailto:jmencher@akrf.com)>

**Subject:** Hudson Highlands Fjord Trail

You don't often get email from [nicholas.gallipani@troopers.ny.gov](mailto:nicholas.gallipani@troopers.ny.gov). [Learn why this is important](#)

Mr. Mencher,

My name is Zone Sergeant Gallipani of the New York State Police, located in Wappinger. We received your letter regarding the Hudson Highlands Fjord Trail. Let us know what exactly you need from us and hopefully we can provide you with that information.

Thanks,

**ZONE SERGEANT**

NICHOLAS S. GALLIPANI  
NEW YORK STATE POLICE  
TROOP K - ZONE 2  
845-296-3145 PHONE  
845-677-7300 DISPATCH



---

CONFIDENTIALITY NOTICE: This e-mail, including any attachments, may contain highly sensitive and confidential information. It is intended only for the individual(s) named. If you received this e-mail in error or from someone who was not authorized to send it to you, do not disseminate, copy or otherwise use this e-mail or its attachments. Please notify the sender immediately by reply e-mail and delete the e-mail from your system.

---

CONFIDENTIALITY NOTICE: This e-mail, including any attachments, may contain highly sensitive and confidential information. It is intended only for the individual(s) named. If you received this e-mail in error or from someone who was not authorized to send it to you, do not disseminate, copy or otherwise use this e-mail or its attachments. Please notify the sender immediately by reply e-mail and delete the e-mail from your system.