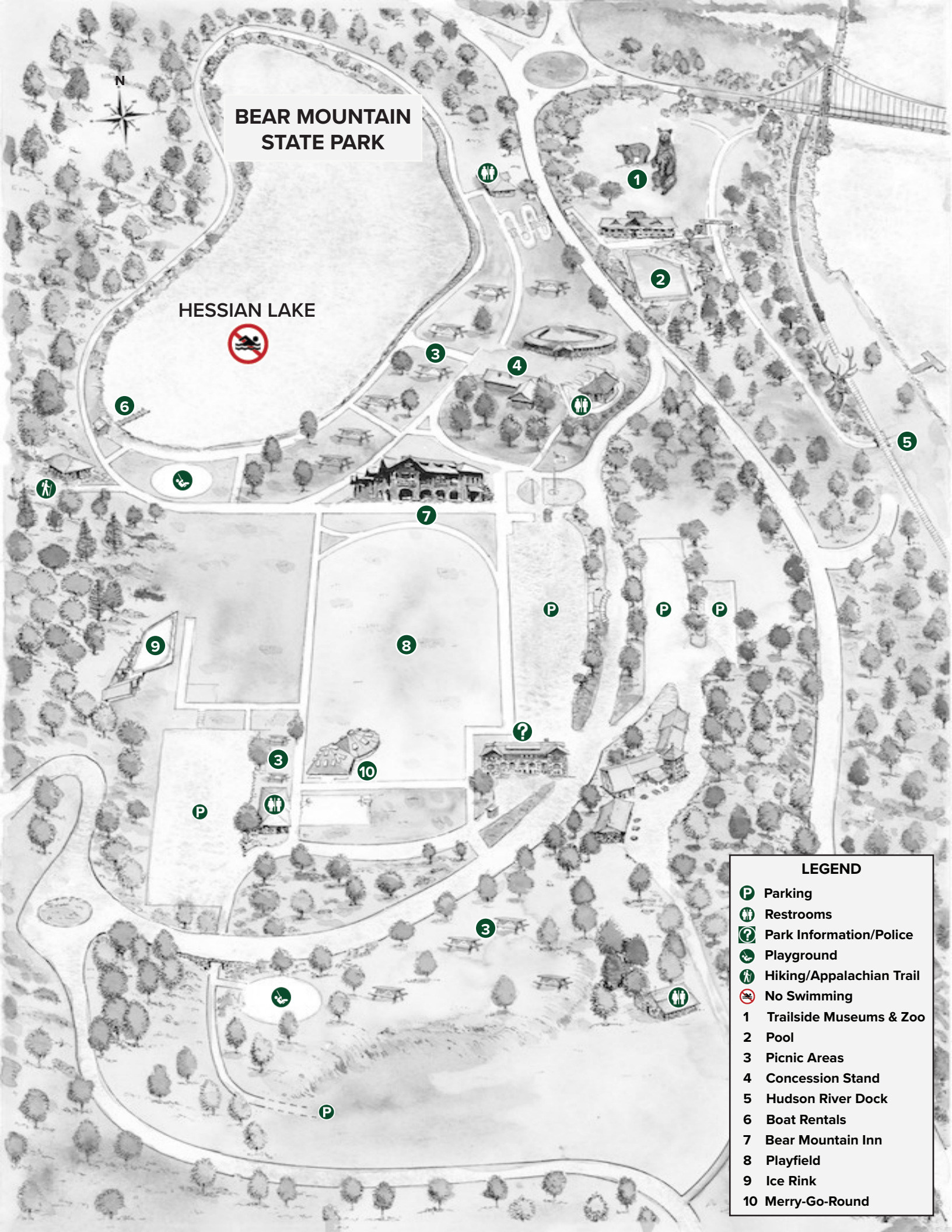


N

BEAR MOUNTAIN STATE PARK

HESSIAN LAKE



LEGEND

- Parking
- Restrooms
- Park Information/Police
- Playground
- Hiking/Appalachian Trail
- No Swimming
- 1 Trailside Museums & Zoo
- 2 Pool
- 3 Picnic Areas
- 4 Concession Stand
- 5 Hudson River Dock
- 6 Boat Rentals
- 7 Bear Mountain Inn
- 8 Playfield
- 9 Ice Rink
- 10 Merry-Go-Round

BEAR MOUNTAIN STATE PARK GENERAL PARK INFORMATION

VEHICLE USE FEE: \$10.00 per car

BUSES: Must have a bus permit prior to arrival. Call (845) 786-2702 ext. 2 or email us at bearmountainsp@parks.ny.gov for the bus permit packet at least (2) weeks in advance.

BUS FEES: \$60.00 - 501(c)(3) Group (copy of IRS 501(c)(3) certification required)
\$100.00 - Non-501(c)(3) Group

POOL HOURS:

Mon. – Fri. 10:00 AM – 5:30 PM

Sat., Sun. & Holidays 11:00 AM – 6:30 PM

Last admission at 5:00 PM and 6:00 PM

POOL ADMISSION FEE:

\$5.00 per person

**** ALL FEES AND TIMES ARE SUBJECT TO CHANGE**

PICNIC PERMITS (for groups not obtaining bus permits):

Groups of 50 or more must obtain a picnic permit prior to arrival. To obtain a permit, submit a letter with the following information:

- Name of Group
- Date, arrival and departure time
- Description
- Number of people
- Preferred location
- Contact Person and Information

TRAILSIDE MUSEUMS AND ZOO:

April 1-Oct 31, 10 AM-4:30 PM

Nov 1-Mar 31, 10 AM-4 PM

Closed Thanksgiving & Christmas Day

Suggested Donation: \$1.00/per person

MERRY GO ROUND:

Labor Day - Last week in June:

Weekends & Holidays

Last Week in June – Labor Day:

Wednesday – Sunday (Closed Mon. & Tues.)

10:00 AM – 5:00 PM

Admission: \$2.00/per ride

MAIL LETTER TO:

Bear Mountain State Park
C/O Permits
3006 Seven Lakes Drive
P.O. Box 427
Bear Mountain, NY 10911

DIRECTIONS TO BEAR MOUNTAIN STATE PARK

- From New York City and Palisades Interstate Parkway (PIP) (North/South)

Take the upper level of the George Washington Bridge and take the very first right onto the Palisades Interstate Parkway (PIP) North. Go approximately 42 miles to Exit 19 (Bear Mountain State Park) and bear right on to Seven Lakes Drive for 3.5 miles to the Bear Mountain Circle. At the circle, take the second right. Follow signs to the parking lots.

- From I-87 East & 287 South (New York Thruway)

Cross the Tappan Zee Bridge. Stay on the New York Thruway to Exit 13N (Palisades Interstate Parkway North). Go approximately 19 miles to Exit 19 (Bear Mountain State Park) and bear right on to Seven Lakes Drive for 3.5 miles to the Bear Mountain Circle. At the circle, take the second right. Follow signs to the parking lots.

- From the North via I-87 South (New York Thruway)

Take I-87 South to Exit 16 (Harriman). At traffic light, turn left onto Route 32. At the third light, turn left onto Route 6 East. Take Route 6 East to the Queensboro Traffic Circle and make the third right onto the Palisades Interstate Parkway (PIP) North. Take Exit 19 (Bear Mountain State Park) and bear right on to Seven Lakes Drive for 3.5 miles to the Bear Mountain Circle. At the circle, take the second right. Follow signs to the parking lots. **In the event that you miss Exit 19, continue on the PIP to the Bear Mountain Bridge Circle. At this circle, make the first right onto 9W south and go to the traffic light. Bear right at the light and go up the hill.

- From the West via Route 17

Take Route 17 East to Exit 130A (Bear Mountain) to Route 6 East/Long Mountain Parkway. Take Route 6 East to the Queensboro Traffic Circle and make the third right onto the Palisades Interstate Parkway North. Take Exit 19 (Bear Mountain State Park) and bear right on to Seven Lakes Drive for 3.5 miles to the Bear Mountain Circle. At the circle, take the second right. Follow signs to the parking lots. **In the event that you miss Exit 19, continue on the PIP to the Bear Mountain Bridge Circle. At this circle, make the first right onto 9W south and go to the traffic light. Bear right at the light and go up the hill.

- From the South via Garden State Parkway

Take the Garden State Parkway North to the last exit (I-87/287, New York Thruway) and take I-87 East/South to Exit 13N (Palisades Interstate Parkway North). Go approximately 19 miles to Exit 19 (Bear Mountain State Park) and bear right on to Seven Lakes Drive for 3.5 miles to the Bear Mountain Circle. At the circle, take the second right. Follow signs to the parking lots.

- From the East via I-84

Take I-84 West to the second exit after the Newburgh-Beacon Bridge (Route 9W South). Take Route 9W South approximately 18 miles to the Bear Mountain Bridge Circle and take the second right to continue on Route 9W South. At the first traffic light, bear right and go up the hill.

- From the North via Route 9W

Take Route 9W South to the Bear Mountain Bridge Circle and take the second right to continue on Route 9W South. At the first traffic light, bear right and go up the hill.