

Oquaga Creek State Park

5995 County Highway 20, Bainbridge, NY 13733

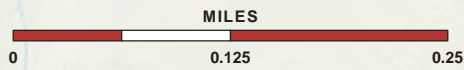
Legend

- | | | | |
|--|---------------------|--|------------------|
| | Bathhouse | | Playground |
| | Beach | | Telephone |
| | Boat Launch | | Volleyball Court |
| | Bridge | | Water Spigot |
| | Campsites | | Roads |
| | Comfort Station | | Access Road |
| | Concession Stand | | Marked Trail |
| | Cottage | | Sidewalk |
| | Disc Golf | | County Boundary |
| | Dumping Station | | 10ft Contours |
| | First Aide | | Stream |
| | Handicap Accessible | | Paved Area |
| | Maintenance Shop | | Building |
| | Nature Trail Sign | | Beach |
| | Park Office | | Disc Golf Course |
| | Parking Area | | State Park Land |
| | Picnic Area | | Water |
| | Picnic Pavilion | | |

Park Trails

Trail Use	Trail ID	Name	Length
	NT	Nature Trail	0.3 miles
	SH	Short Trail	2.0 miles
	ST	Ski Trail	4.6 miles
	TL	Lake Trail	1.2 miles
	UN	Unnamed Trails	2.3 miles

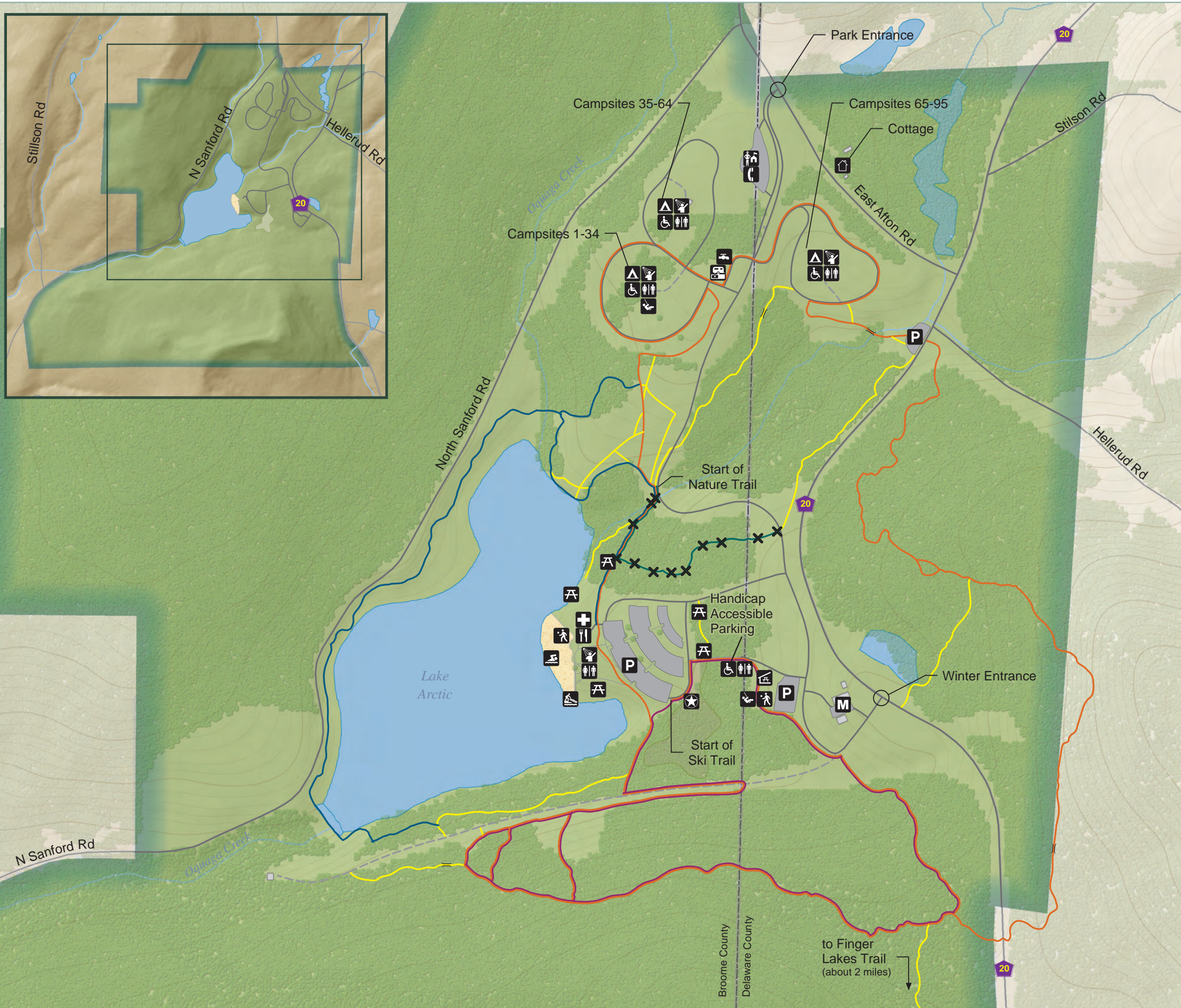
	Hiking		Snowshoeing		Cross Country Skiing
--	--------	--	-------------	--	----------------------



Please be considerate of other park users.
Please report any accident or incident immediately to park police.
All boundaries and trails are shown as approximate.
Be aware of changing trail conditions.

Park Office: (607)467-4160
Central Regional Office: (315)492-1756
State Park Police: (315)482-1071
In Case of Emergency: 1(877)851-6086 or 911

Map produced by NYSOPRHP GIS Bureau, June 11, 2015.



to Finger Lakes Trail
(about 2 miles)