

Southwick Beach State Park

8119 Southwicks Place, Henderson, NY 13650

Park Office: (315) 846-5338
 Regional Office: (315) 482-2593
 Park Police: 1 (877) 851-6086
 In Case of Emergency: 911



Parks, Recreation
and Historic
Preservation

Legend

- | | | | |
|------------------------|-------------------|----------------------------|-------------|
| ADA Accessible Parking | Comfort Station | Playground | OPRHP Land |
| Baseball | Concession Stand | Recycling Center | DEC Land |
| Basketball Court | Contact Station | Reservable Picnic Pavilion | DEC Wetland |
| Bathhouse | Dumping Station | Trailhead | Building |
| Beach | Gate | Viewing Scope | Paved Area |
| Bench | Information Kiosk | 5' Contour | Water |
| Bridge | Maintenance Area | Trail Color Varies | |
| Campground | Parking Area | Sidewalk | |
| Car Top Boat Launch | Picnic Site | Stream | |

Trails

- BB - Big Beach Trail - Orange - 0.7 Miles
- BD - Big Dead Maple Tree Trail - Brown - 0.2 Miles
- YT - Yellow Trail - Yellow - 0.6 Miles

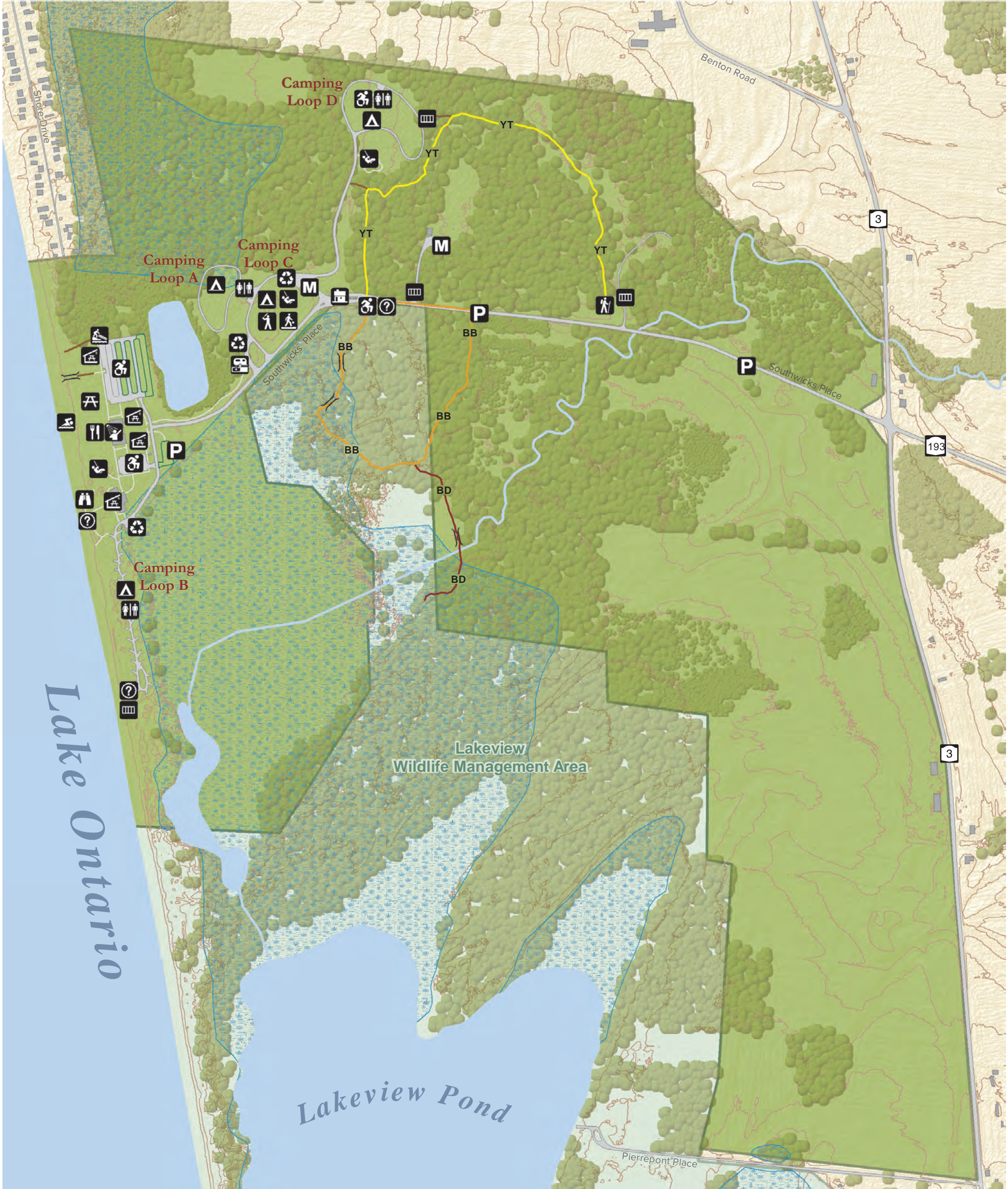
Big Dead Maple Tree Trail
(handicap accessible to bridge)

Big Beech Trail
(handicap accessible, benches available)

**Please be considerate of other park users.
 Please report any accident or incident
 immediately to park police.
 All boundaries and trails are shown as approximate.
 Be aware of changing trail conditions.**



Map produced by NYSOPRHP GIS Bureau, December 13, 2019.



Lake Ontario

Lakeview Pond

Lakeview
Wildlife Management Area