

FHWA NOISE ABATEMENT CRITERIA (NAC)

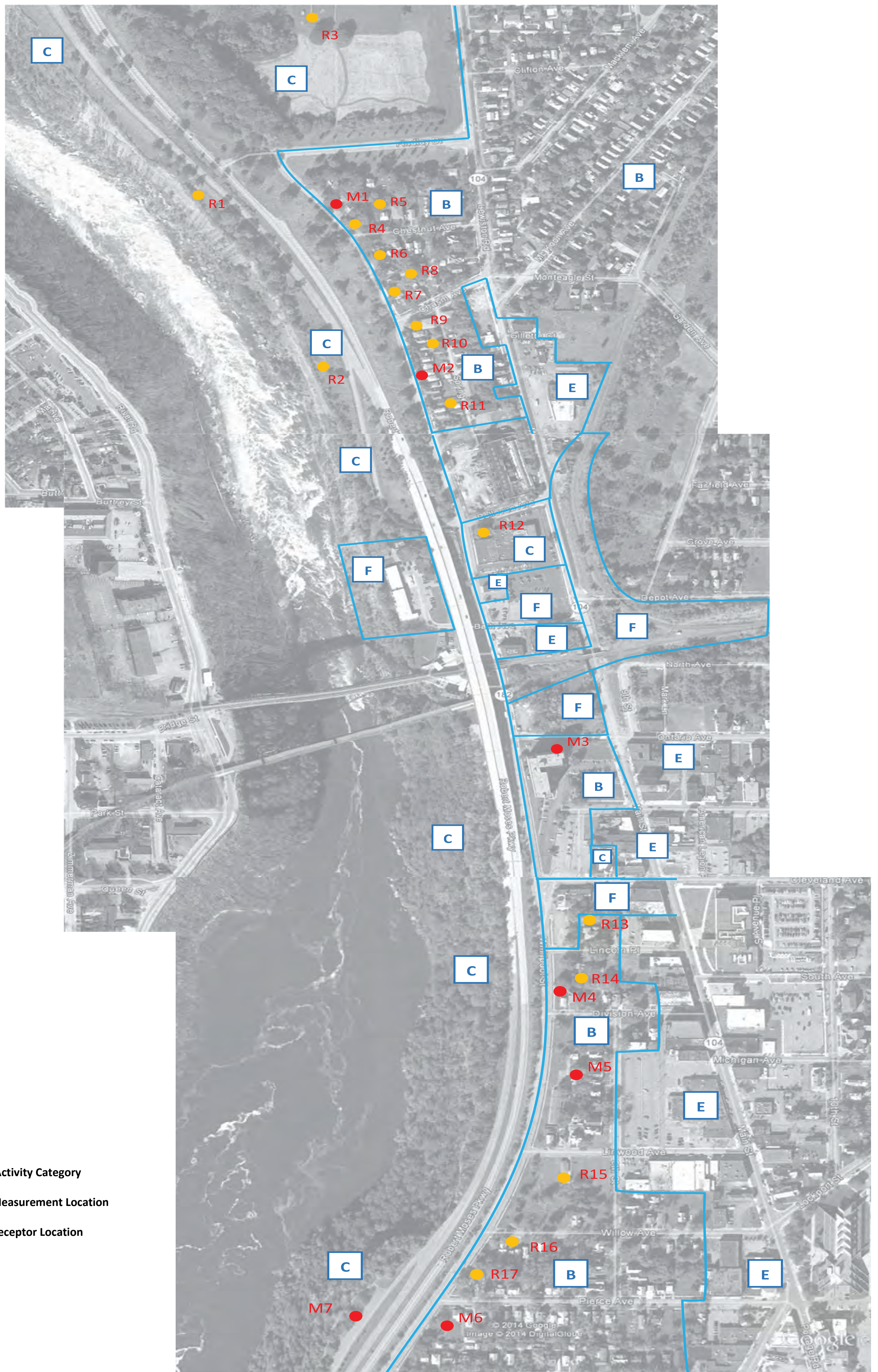
Activity Category	Leq(h)	Description of Activity Category
A	57 (Exterior)	Lands on which serenity and quiet are of extraordinary significance and serve an important public need and where the preservation of those qualities is essential if the area is to continue to serve its intended purpose.
B	67 (Exterior)	Residential.
C	67 (Exterior)	Active sports areas, amphitheaters, auditoriums, campgrounds, cemeteries, day care centers, hospitals, libraries, medical facilities, parks, picnic areas, places of worship, playgrounds, public meeting rooms, public or nonprofit institutional structures, radio studios, recording studios, recreation areas, Section 4(f) sites, schools, television studios, trails, and trail crossings.
D	52 (Interior)	Auditoriums, day care centers, hospitals, libraries, medical facilities, places of worship, public meeting rooms, public or nonprofit institutional structures, radio studios, schools, and television studios.
E	72 (Exterior)	Hotels, motels, offices, restaurants/bars and other developed lands, properties or activities not included in A-D or F.
F	--	Agriculture, airports, bus yards, emergency services, industrial, logging, maintenance facilities, manufacturing, mining, rail yards, retail facilities, ship yards, utilities (water resources, water treatment, electrical), and warehousing.
G	--	Undeveloped lands that are not permitted.

NIAGARA GORGE CORRIDOR

Robert Moses Parkway Removal Project

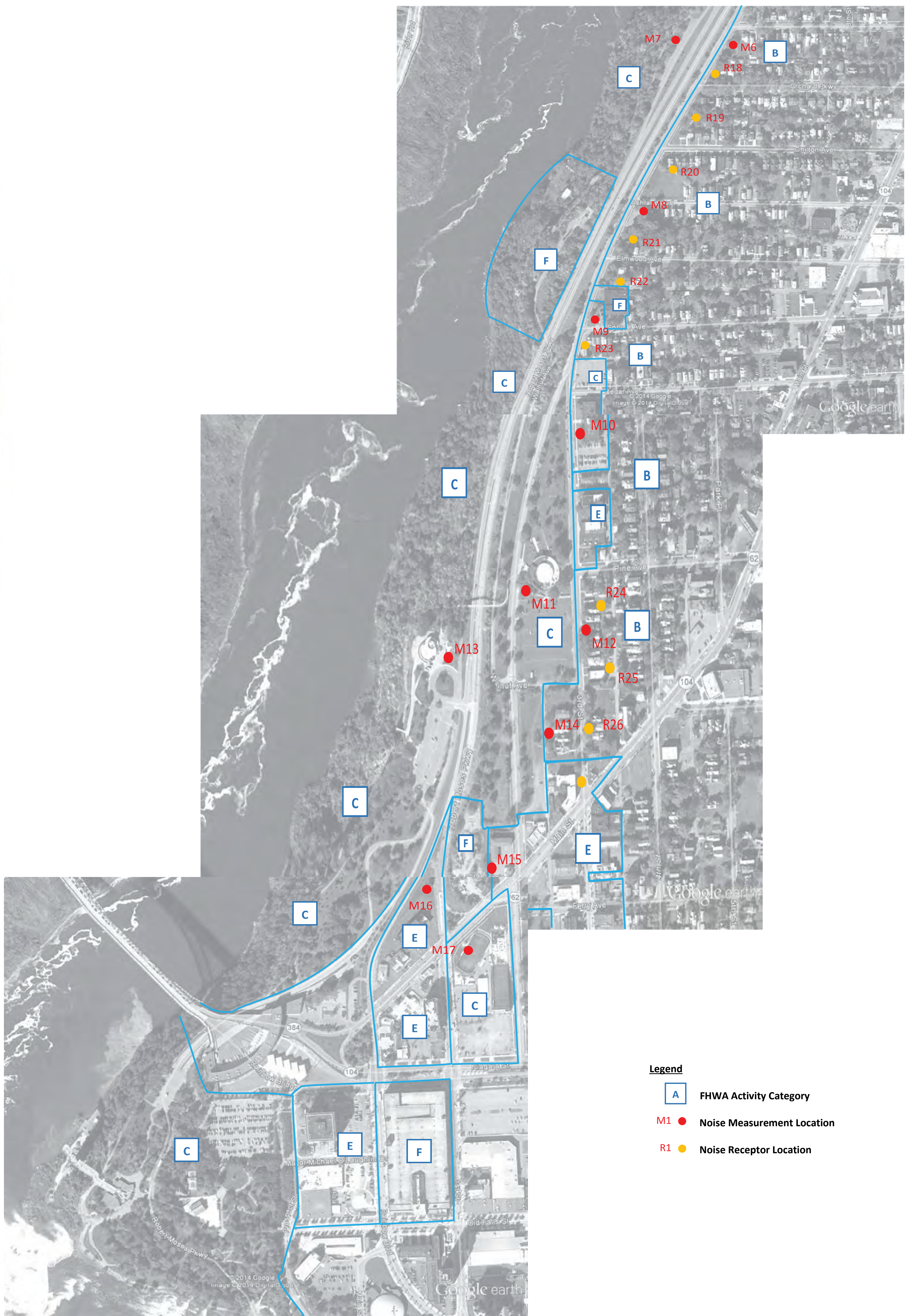
MAIN STREET TO FINDLAY DRIVE

NOISE MEASUREMENTS & RECEPTOR LOCATIONS - NORTH



NIAGARA GORGE CORRIDOR
 Robert Moses Parkway Removal Project
 MAIN STREET TO FINDLAY DRIVE

NOISE MEASUREMENTS & RECEPTOR LOCATIONS - SOUTH



NIAGARA GORGE CORRIDOR
 Robert Moses Parkway Removal Project
 MAIN STREET TO FINDLAY DRIVE

SUMMARY OF EXISTING TRAFFIC NOISE LEVELS (L_{eq})				
Site	Location	FHWA Activity Category /NAC	Equivalent Number of Residential Receptors¹	Existing Noise Levels (dBA)
R1	RMP Trail	C / 67	4	54
R3	DeVeaux Woods Baseball Diamond	C / 67	50	42
M1	2915 Whirlpool St.	B / 67	2	62
R2	RMP Trail	C / 67	4	55
R4	Whirlpool St.	B / 67	2	61
R5	Chestnut Ave.	B / 67	2	50
R6	Whirlpool St.	B / 67	4	64
R7	Whirlpool St.	B / 67	2	63
R8	Chasm Ave. N	B / 67	1	53
R9	Chasm Ave. S	B / 67	4	59
R10	Whirlpool St.	B / 67	6	54
M2	2667 Whirlpool St.	B / 67	3	64
R11	Whirlpool St.	B / 67	6	54
R12	2351 Whirlpool St.	C / 67	2	62
M3	Henry Wrobel Tower	B / 67	250	58
R13	Lincoln Pl. N	B / 67	1	57
R14	Lincoln Pl. S	B / 67	4	56
M4	710 Division St.	B / 67	1	62
M5	1634 Eighth St.	B / 67	4	56
R15	Linwood Ave.	B / 67	4	53
R16	Willow Ave.	B / 67	5	59
R17	Pierce Ave. N	B / 67	1	61
M6	711 Pierce Ave.	B / 67	3	62
R18	Orchard Pkwy. N	B / 67	1	60
M7	RMP Trail Rest Area	C / 67	9	55
R19	Chilton Ave. N	B / 67	3	58
R20	Chilton Ave. S	B / 67	2	55
M8	611 Ashland Dr.	B / 67	4	59
R21	Elmwood Ave. N	B / 67	1	59
R22	Elmwood Ave. S	B / 67	5	56
M9	316 Spruce Ave.	B / 67	1	64
R23	Whirlpool St.	B / 67	1	64
M10	Niagara County Civic Bldg.	C / 67	3	60
M11	Aquarium of Niagara	C / 67	4	53
R24	Third St.	B / 67	3	51
M12	619 Third St.	B / 67	5	61
R25	Third St.	B / 67	6	51
R26	Third St.	B / 67	3	57
M13	Niagara Gorge Discovery Center	C / 67	8	54
M14	568 Third St.	B / 67	3	54
M15	492 Main St. (Rodeway Inn)	E / 72	1	62
M16	472 Main St. (Howard Johnson)	E / 72	3	60
M17	427 Main St. (lacrosse field)	C / 67	13	66

NIAGARA GORGE CORRIDOR
Robert Moses Parkway Removal Project
MAIN STREET TO FINDLAY DRIVE