

Bowman Lake State Park

745 Bliven Sherman Road, Oxford, NY 13830

- Legend**
- Basketball Court
 - Bathhouse
 - Boat Dock
 - Comfort Station
 - Concession Stand
 - Contact Station
 - First Aid
 - Parking Area
 - Picnic Area
 - Playground
 - Swimming
 - Trailhead
 - Volleyball Court
 - Dumpster/Recycling
 - Handicap Accessible
 - Maintenance Area
 - Nature Center
 - Park Office
 - Picnic Pavilion
 - Recycling Center
 - Swimming Area
 - Telephone
 - Trailer Dumping Station
 - Campsite
 - Trail color varies
 - Unmarked Trail
 - Unpaved Road
 - Roads
 - Stream
 - State Park
 - DEC Land

ID	Trail Name	Blaze	Mileage
FLTC	Finger Lakes Trail Connector	Yellow	0.08
FLT	Finger Lakes Trail	White	3.3
KPL	Kopac Pond Loop	Lt Blue	0.9
KP	Kopac	Yellow	3.59
LT	Lake Trail	Red/Yellow/Blue	0.4
SN	Snowmobile Trail	---	0.65
WP	Whaley's Pond	Yellow/White	0.4
XC1	XC Trail 1	Red	1.13
XC2	XC Trail 2	Orange	2.48



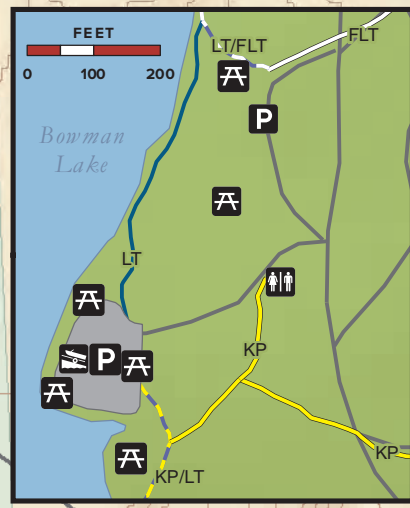
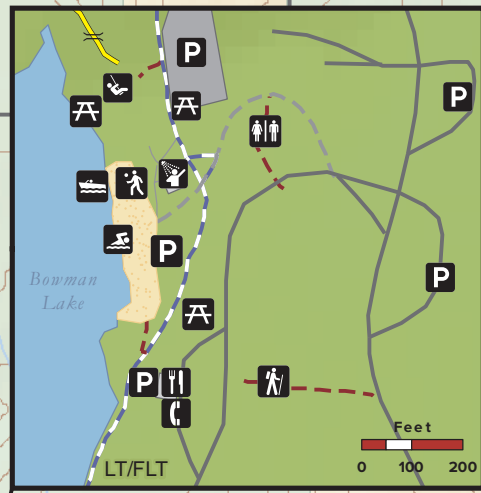
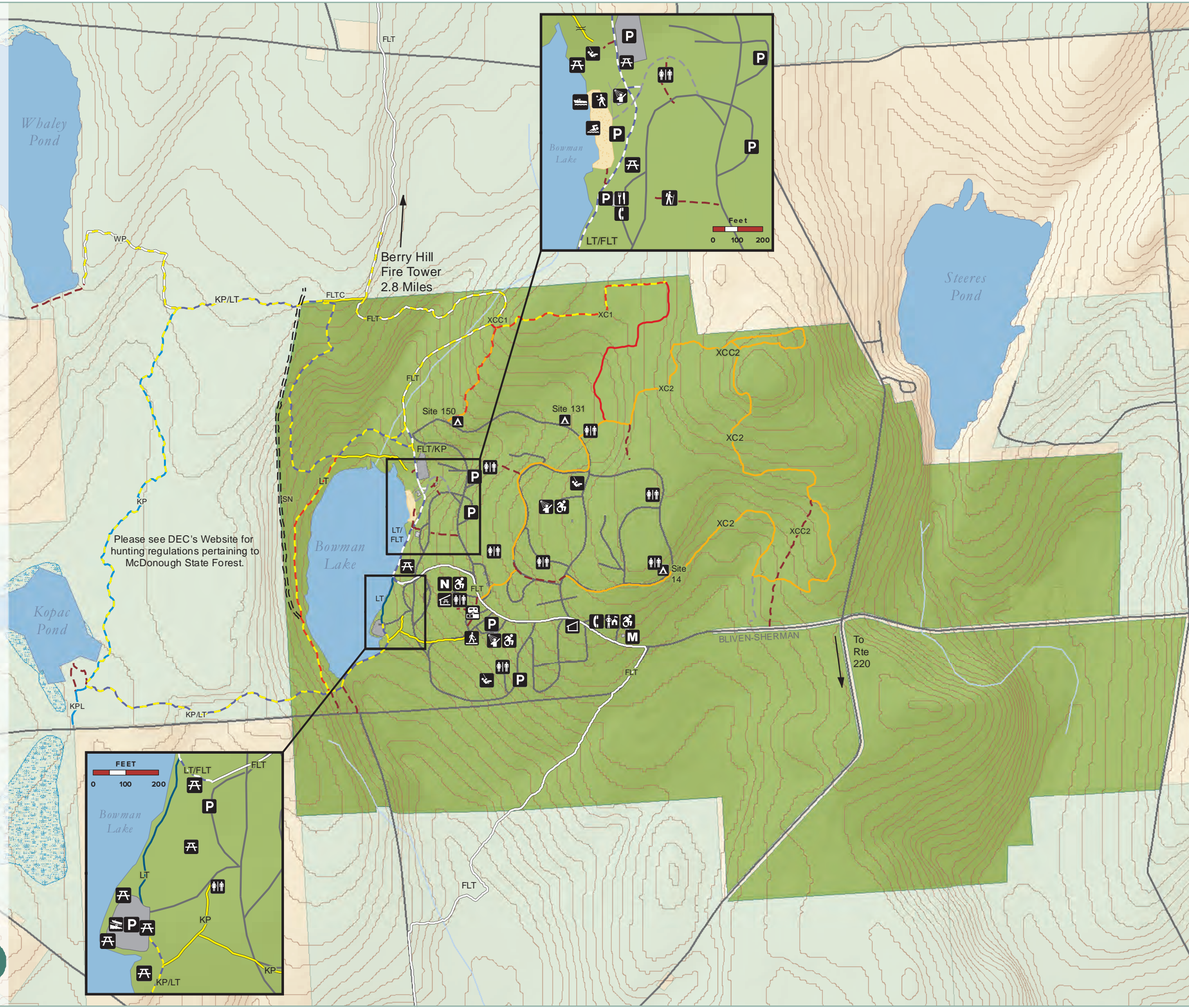
Please be considerate of other park users.
Please report any accident or incident immediately to park police.
All boundaries and trails are shown as approximate.
Be aware of changing trail conditions.

Park Office: (607) 334-2718
Central Regional Office: (315) 492-1756
State Park Police: (315) 462-6422
In Case of Emergency: 911

Map produced by NYSOPRHP GIS Bureau, December 28, 2017.



Parks, Recreation and Historic Preservation



Berry Hill Fire Tower
2.8 Miles

Please see DEC's Website for hunting regulations pertaining to McDonough State Forest.

BLIVEN-SHERMAN
To Rte 220